

December 03, 2025

Tender Period Addendum 07

Town of South Bruce Peninsula – New Town Hall Offices

370 William Street, Wiarton, Ontario, N0H 2T0

Issued To: All Bidders

Re: Architectural and Mechanical Revisions

Part 1 ATTACHMENTS:

1.1 G.M. DIEMERT ARCHITECT INC. DRAWINGS:

- .1 No Drawings are attached.

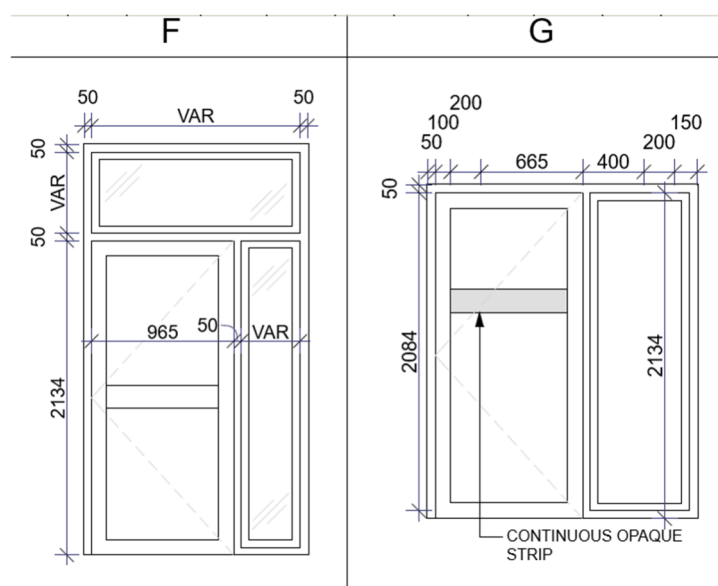
1.2 DEI CONSULTING ENGINEERS INC. MECHANICAL DRAWINGS:

- .1 Electronic Document Identification: PDF file attached "20251203DEI-MECH-TSBP-Add06.pdf", 6-pages LETTER size (8.5" x 11"), for engineer job number 24099, dated "December 3, 2025", titled "Addendum 06", and 1-page ARCH "E" size (121.92 cm x 91.4 cm), issued; "2, ISSUED FOR ADDENDUM 06, 2025.12.03", identified as follows:
 - .1 M102, titled "Schedules (2 of 2)".


Part 2 Summary of Amendments to Bid Documents:

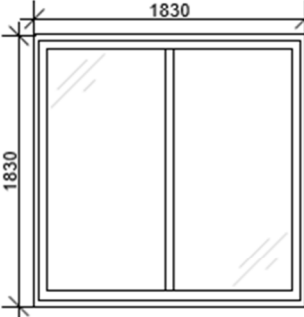
2.1 ARCHITECTURAL DRAWINGS ARE REVISED:



- .1 Door schedules and elevations on Drawings A-110, A-111, A-112, and A-130 are revised as follows:
 - .1 **CLARIFY** interior aluminum door shall have full light glazing as indicated on revised elevations "F" and "G" below. This affects openings 019F, 031, 049, and 050.
 - .2 Doors 200 and 201 on drawing A-130 are **MODIFIED** to have hollow metal frames and leaves as shown below.



DOOR SCHEDULE								
DOOR No.	F.R.R.	FRAME		DOOR			HDWR	COMMENTS
		MAT'L	ELEV.	SIZE	MAT'L	THK		
200	N/A	HM	A	915x1524	HM	44	1	EXTERIOR DOOR
201	N/A	HM	A	915x2032	HM	44	1	EXTERIOR DOOR

DOOR LEGEND	
ELEV.	A
VIEW	

W-04

1830x1830
ALUMINUM WINDOW

ROOF LEGEND	
	ROOF DRAIN
	WALKING PATHS - REFER TO SPECIFICATIONS

2.2 MECHANICAL SPECIFICATIONS AND DRAWINGS ARE REVISED AS NOTED**End of Tender Addendum.**