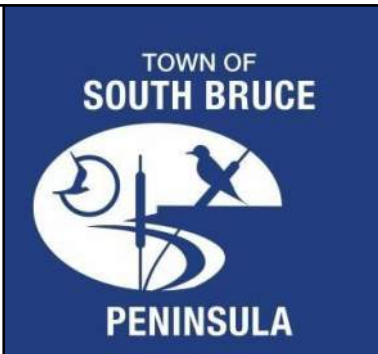
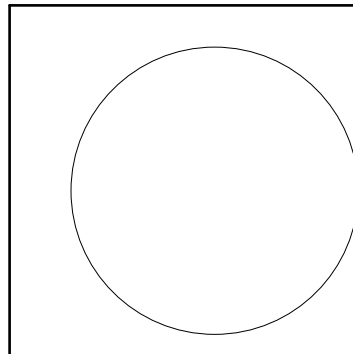


SITE DEMOLITION NOTES	
SD-02-01	EXISTING LOADING AREA WALLS, ROOF AND CONCRETE SLAB TO BE REMOVED COMPLETE.
SD-02-03	EXISTING BOLLARD TO BE REMOVED
SD-02-05	DASHED LINE INDICATES AREA OF EXISTING CONCRETE CURB TO BE REMOVED
SD-31-07	EXISTING VEGETATION TO BE REMOVED.
SD-31-08	AREA OF EXISTING ASPHALT PAVING TO BE REMOVED. CONTRACTOR TO CRUSH AND REUSE AS BASE MATERIAL FOR NEW CONCRETE PAVERS. REFER TO CIVIL.

03	ADD-02	ADDENDUM 02	2025.11.21
02	ADD-01	ADDENDUM 01	2025.11.19
01		ISSUED FOR TENDER	2025.10.28
RevID	Change	Revision	Date

Revision History	
Drawing Name	
<h1 style="text-align: center;">SITE PLAN - DEMOLITION</h1>	
Drawing Number:	Project Number:
A-005	2404
	ORIGINAL DRAWING SIZE: ARCH E (1220 x

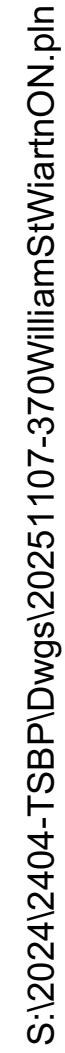


G. M. DIEMERT ARCHITECT INC.
Suite 201
857 Fourth Avenue East
OWEN SOUND, ONTARIO, N4K 2N9,
tel: 519-376-1075

OWNER:
Town of South Bruce Peninsula
315 George Street
Wexford, ON N8T 2T0

PROJECT:
New Townhall Offices

Drawing Number:	Project Number:
A 005	2404



03	ADD-02	ADDENDUM 02	2025.11.21
02	ADD-01	ADDENDUM 01	2025.11.19
01		ISSUED FOR TENDER	2025.10.28
Rev/D	Change	Revision	Date



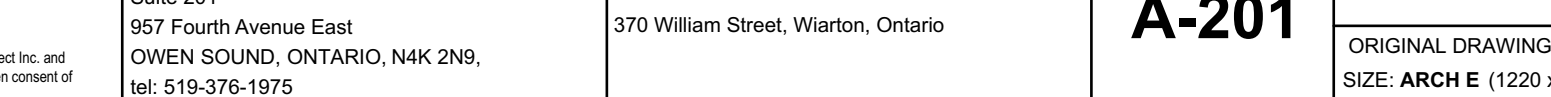
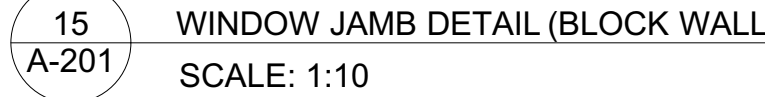
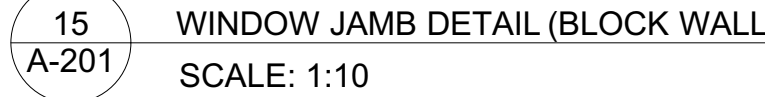
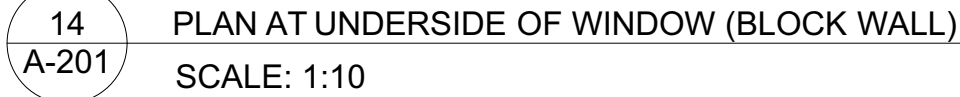
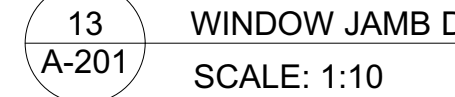
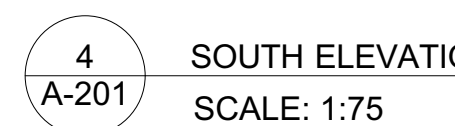
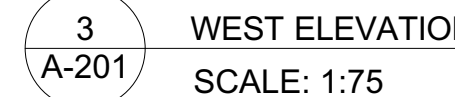
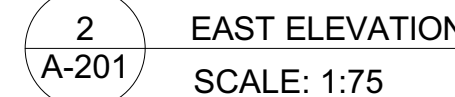
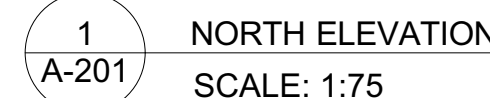
WINDOW LEGEND		DOOR SCHEDULE				
WINDOW TYPE	W-G1	W-G2	W-G3	W-G4	W-G5	
VIEW						
DIMENSIONS	1220x1950	1524x1950	2000x1950	1830x1830	2100x2450	
NOTES	ALUMINUM WINDOW	ALUMINUM WINDOW	ALUMINUM WINDOW	ALUMINUM WINDOW	INTERIOR WINDOW	

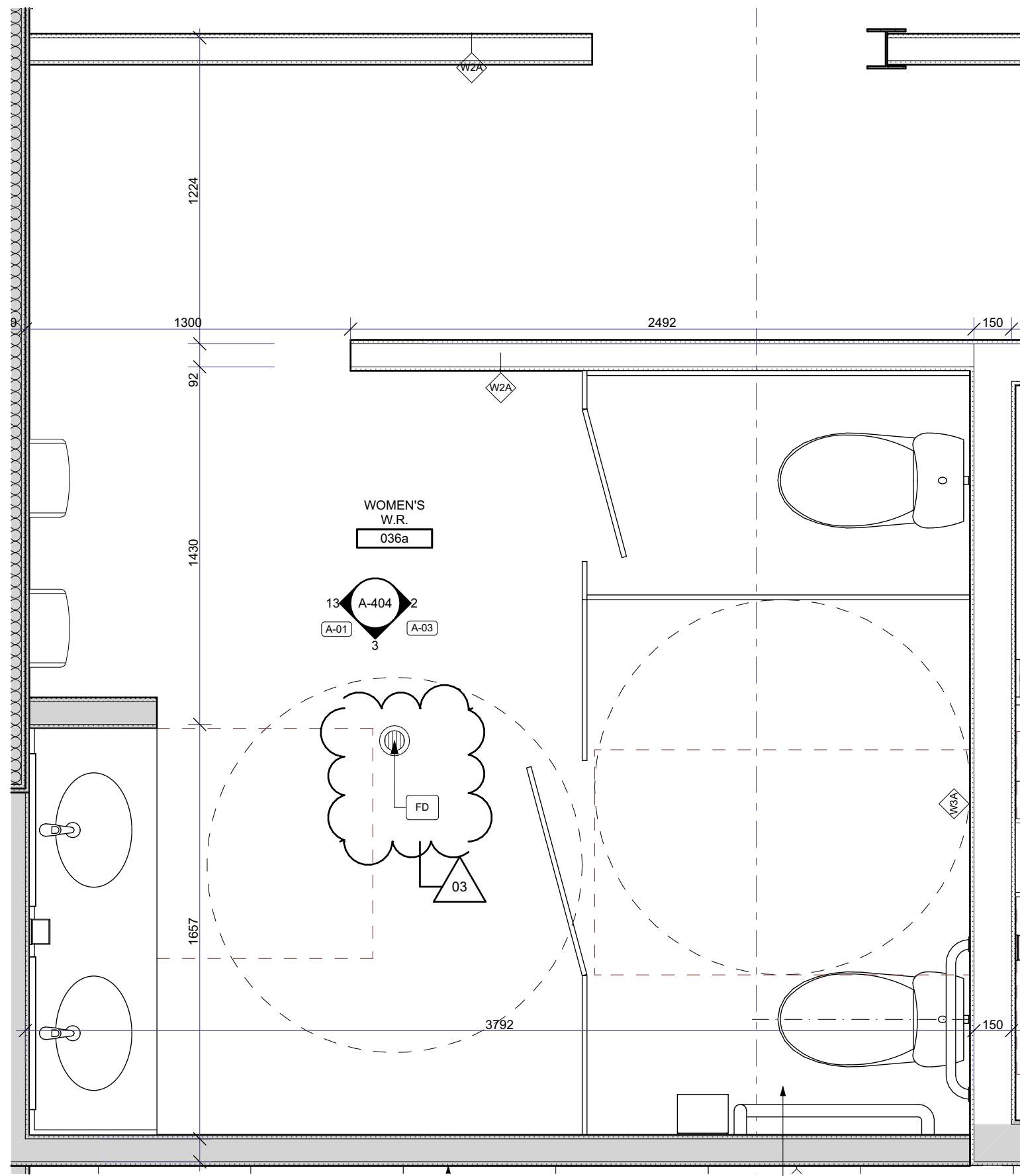
ELEV.	DOOR No.	RM NAME	P.F.R.	FRAME MAT'L	DOOR SCHEDULE				HOW	LABELED TO SAFETY GLASS	COMMENTS	QTY
					SIZE	SW	WT	THK				
A	084	ELECTRICAL ROOM	NM	NM	960x2124	NB	44	1	1		EXTERIOR DOOR	
A	024	CURT	NM	NM	960x2124	SC	WOOD	44	1	1		
A	030	STORAGE / PAINT	NM	NM	960x2124	SC	WOOD	44	1	1		
A	027	STOR	NM	NM	960x2124	SC	WOOD	44	1	1		
A	044	W/4 STORAGE	NM	NM	960x2124	SC	WOOD	44	1	1		PAINT GRADE FINISH
A	045	VALVE	NM	NM	960x2124	SC	WOOD	44	1	1		
A	045	HIGH-DENSITY STOR.	NM	NM	960x2124	SC	WOOD	44	1	1		
A	036	W/6	NM	NM	960x2124	NB	44	1	1	1		
A	026	RESTRIE	NM	NM	960x2124	SC	WOOD	44	1	1		
A	030	STORAGE	NM	NM	970x2124	SC	WOOD	44	1	1		
A	031	STAP	NM	ALUM	510x2032	GLASS	44	1	1	1		EXTERIOR DOOR
A	031	STAP	NM	NM	960x2124	SC	WOOD	44	1	1		
A	034	CURT ROOM	NM	NM	960x2124	SC	WOOD	44	1	1		PAINT GRADE FINISH
A	032	HYDROELEC	44	NM	960x2124	NB	44	1	1	1		
A	038	ELECTRICAL 11 ROOM	NM	NM	960x2124	SC	WOOD	44	1	1		
A	017	STORAGE	NM	NM	960x2124	SC	WOOD	44	1	1		
A	047	RESTRIE	NM	NM	970x2124	SC	WOOD	44	1	1		
A	048	STAR	44	NM	510x2124	NB	44	1	1	1		

[illegible]

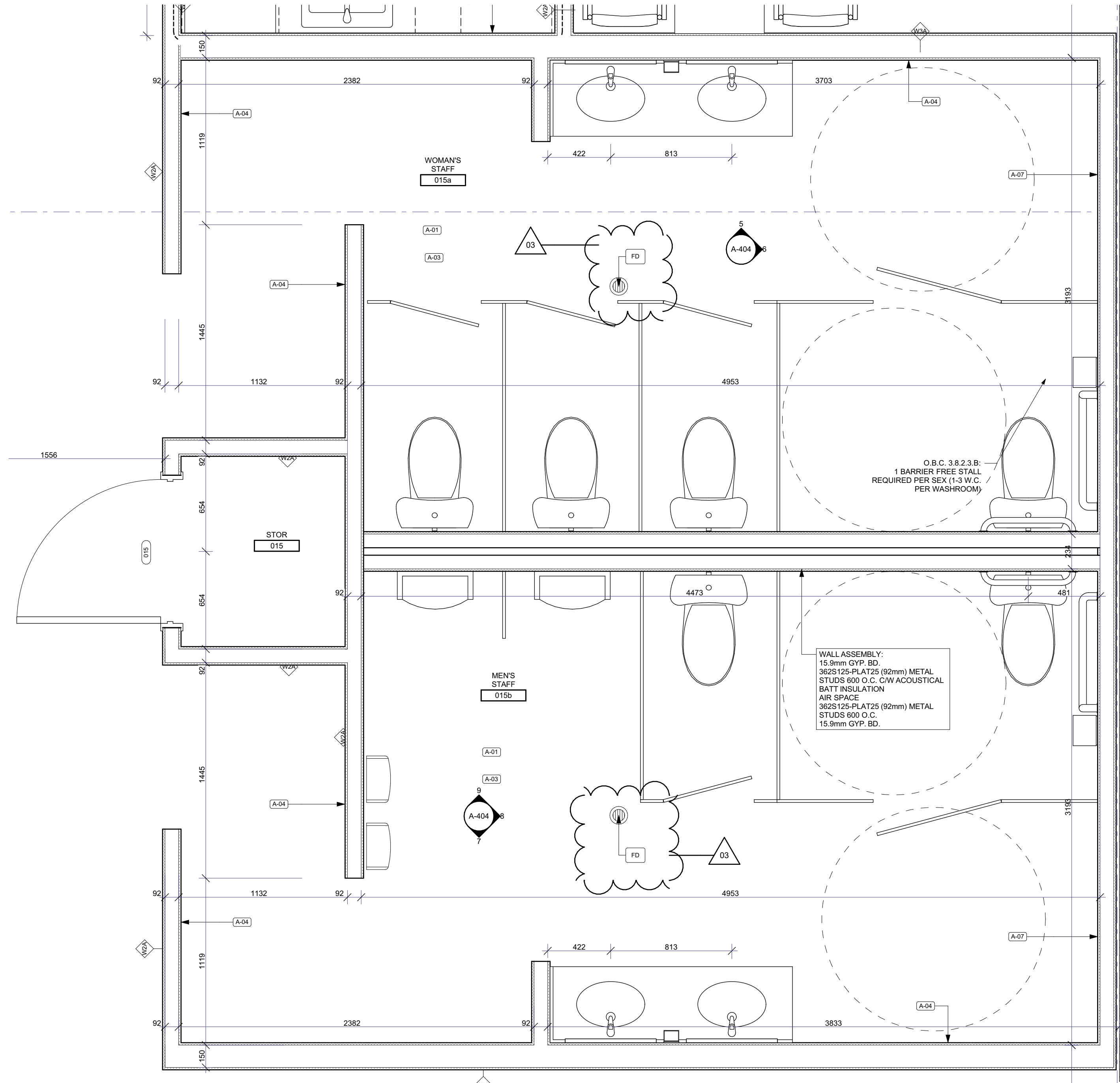
																																																																																																																																																																																																																																																																																																																																																																																																																																																																																																																																																																																																																																																																																																																																																																																																																																																																																																																																																																																																																																																																																																																																																																																																																																																																																																																																																																																																																																																																																																</
--	--	--	--	--	--	--	--	--	--	--	--	--	--	--	--	--	--	--	--	--	--	--	--	--	--	--	--	--	--	--	--	--	--	--	--	--	--	--	--	--	--	--	--	--	--	--	--	--	--	--	--	--	--	--	--	--	--	--	--	--	--	--	--	--	--	--	--	--	--	--	--	--	--	--	--	--	--	--	--	--	--	--	--	--	--	--	--	--	--	--	--	--	--	--	--	--	--	--	--	--	--	--	--	--	--	--	--	--	--	--	--	--	--	--	--	--	--	--	--	--	--	--	--	--	--	--	--	--	--	--	--	--	--	--	--	--	--	--	--	--	--	--	--	--	--	--	--	--	--	--	--	--	--	--	--	--	--	--	--	--	--	--	--	--	--	--	--	--	--	--	--	--	--	--	--	--	--	--	--	--	--	--	--	--	--	--	--	--	--	--	--	--	--	--	--	--	--	--	--	--	--	--	--	--	--	--	--	--	--	--	--	--	--	--	--	--	--	--	--	--	--	--	--	--	--	--	--	--	--	--	--	--	--	--	--	--	--	--	--	--	--	--	--	--	--	--	--	--	--	--	--	--	--	--	--	--	--	--	--	--	--	--	--	--	--	--	--	--	--	--	--	--	--	--	--	--	--	--	--	--	--	--	--	--	--	--	--	--	--	--	--	--	--	--	--	--	--	--	--	--	--	--	--	--	--	--	--	--	--	--	--	--	--	--	--	--	--	--	--	--	--	--	--	--	--	--	--	--	--	--	--	--	--	--	--	--	--	--	--	--	--	--	--	--	--	--	--	--	--	--	--	--	--	--	--	--	--	--	--	--	--	--	--	--	--	--	--	--	--	--	--	--	--	--	--	--	--	--	--	--	--	--	--	--	--	--	--	--	--	--	--	--	--	--	--	--	--	--	--	--	--	--	--	--	--	--	--	--	--	--	--	--	--	--	--	--	--	--	--	--	--	--	--	--	--	--	--	--	--	--	--	--	--	--	--	--	--	--	--	--	--	--	--	--	--	--	--	--	--	--	--	--	--	--	--	--	--	--	--	--	--	--	--	--	--	--	--	--	--	--	--	--	--	--	--	--	--	--	--	--	--	--	--	--	--	--	--	--	--	--	--	--	--	--	--	--	--	--	--	--	--	--	--	--	--	--	--	--	--	--	--	--	--	--	--	--	--	--	--	--	--	--	--	--	--	--	--	--	--	--	--	--	--	--	--	--	--	--	--	--	--	--	--	--	--	--	--	--	--	--	--	--	--	--	--	--	--	--	--	--	--	--	--	--	--	--	--	--	--	--	--	--	--	--	--	--	--	--	--	--	--	--	--	--	--	--	--	--	--	--	--	--	--	--	--	--	--	--	--	--	--	--	--	--	--	--	--	--	--	--	--	--	--	--	--	--	--	--	--	--	--	--	--	--	--	--	--	--	--	--	--	--	--	--	--	--	--	--	--	--	--	--	--	--	--	--	--	--	--	--	--	--	--	--	--	--	--	--	--	--	--	--	--	--	--	--	--	--	--	--	--	--	--	--	--	--	--	--	--	--	--	--	--	--	--	--	--	--	--	--	--	--	--	--	--	--	--	--	--	--	--	--	--	--	--	--	--	--	--	--	--	--	--	--	--	--	--	--	--	--	--	--	--	--	--	--	--	--	--	--	--	--	--	--	--	--	--	--	--	--	--	--	--	--	--	--	--	--	--	--	--	--	--	--	--	--	--	--	--	--	--	--	--	--	--	--	--	--	--	--	--	--	--	--	--	--	--	--	--	--	--	--	--	--	--	--	--	--	--	--	--	--	--	--	--	--	--	--	--	--	--	--	--	--	--	--	--	--	--	--	--	--	--	--	--	--	--	--	--	--	--	--	--	--	--	--	--	--	--	--	--	--	--	--	--	--	--	--	--	--	--	--	--	--	--	--	--	--	--	--	--	--	--	--	--	--	--	--	--	--	--	--	--	--	--	--	--	--	--	--	--	--	--	--	--	--	--	--	--	--	--	--	--	--	--	--	--	--	--	--	--	--	--	--	--	--	--	--	--	--	--	--	--	--	--	--	--	--	--	--	--	--	--	--	--	--	--	--	--	--	--	--	--	--	--	--	--	--	--	--	--	--	--	--	--	--	--	--	--	--	--	--	--	--	--	--	--	--	--	--	--	--	--	--	--	--	--	--	--	--	--	--	--	--	--	--	--	--	--	--	--	--	--	--	--	--	--	--	--	--	--	--	--	--	--	--	--	--	--	--	--	--	--	--	--	--	--	--	--	--	--	--	--	--	--	--	--	--	--	--	--	--	--	--	--	--	--	--	--	--	--	--	--	--	--	--	--	--	--	--	--	--	--	--	--	--	--	--	--	--	--	--	--	--	--	--	--	--	--	--	--	--	--	--	--	--	--	--	--	--	--	--	--	--	--	--	--	--	--	--	--	--	--	--	--	--	--	--	--	--	--	--	--	--	--	--	--	--	--	--	--	--	--	--	--	--	--	--	--	--	--	--	--	--	--	--	--	--	--	--	--	--	--	--	--	--	--	--	--	--	--	--	--	--	--	--	--	--	--	--	--	--	--	--	--	--	--	--	--	--	--	--	--	--	--	--	--	--	--	--	--	--	--	--	--	--	--	--	--	--	--	--	--	--	--	--	--	--	--	--	--	--	--	--	--	--	--	--	--	--	--	--	--	--	--	--	--	--	--	--	--	--	--	--	--	--	--	--	--	--	--	--	--	--	--	--	--	--	--	--	--	--	--	--	--	--	--	--	--	--	--	--	--	--	--	--	--	--	--	--	--	--	--	--	--	--	--	--	--	--	--	--	--	--	--	--	--	--	--	--	--	--	--	--	--	--	--	--	--	--	--	--	--	--	--	--	--	--	--	--	--	--	--	--	--	--	--	--	--	--	--	--	--	--	--	--	--	--	--	--	--	--	--	--	--	--	--	--	--	--	--	--	--	--	--	--	--	--	--	--	--	--	--	--	--	--	--	--	--	--	--	--	--	--	--	--	--	--	--	--	--	--	--	--	--	--	--	--	--	--	--	--	--	--	--	--	--	--	--	--	--	--	--	--	--	--	--	--	--	--	--	--	--	--	--	--	--	--	--	--	--	--	--	--	--	--	--	--	--	--	--	--	--	--	--	--	--	--	--	--	--	--	--	--	--	--	--	--	--	--	--	--	--	--	--	--	--	--	--	--	--	--	--	--	--	--	--	--	--	--	--	--	--	--	--	--	--	--	--	--	--	--	--	--	--	--	--	--	--	----

[illegible]

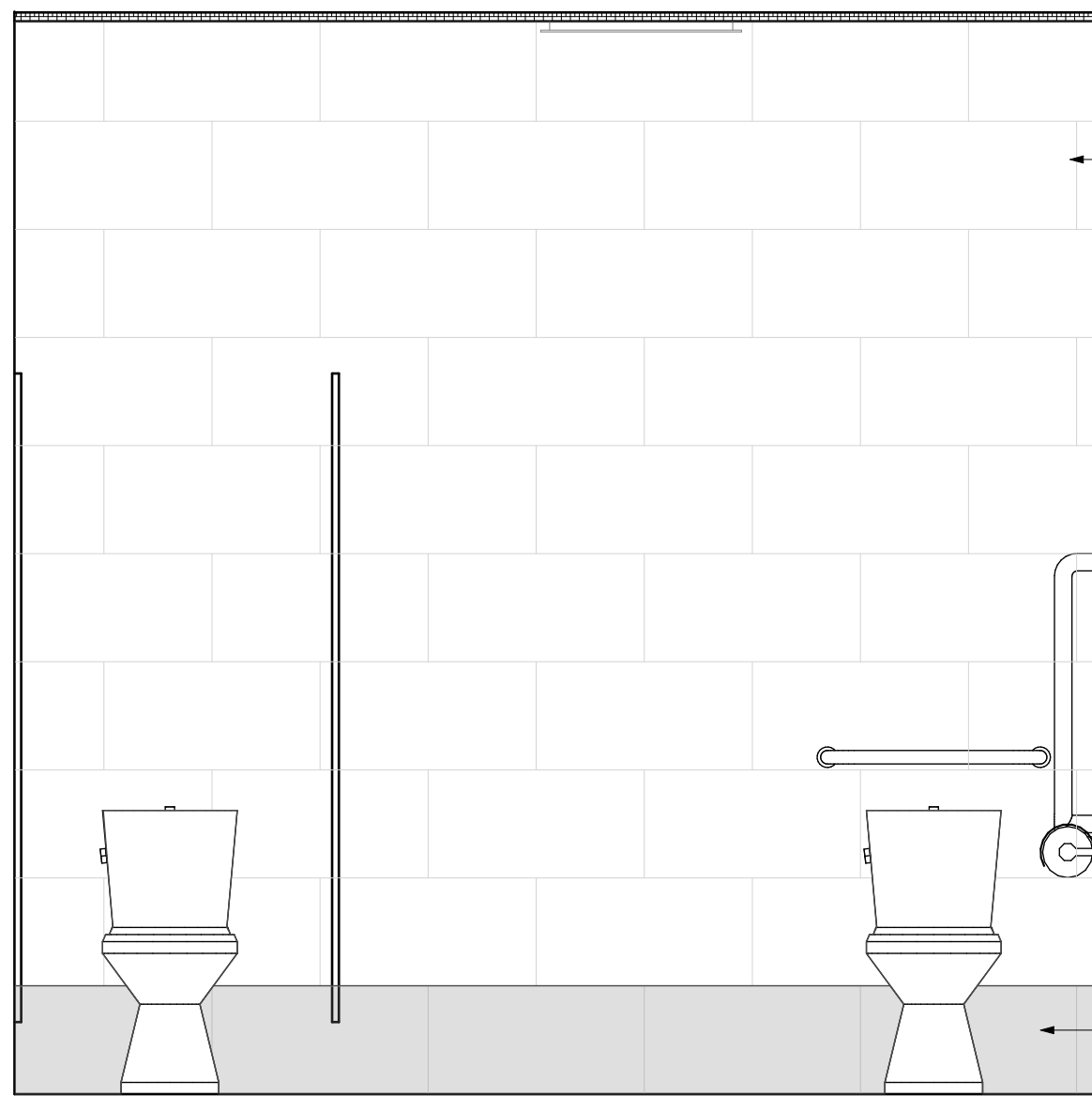




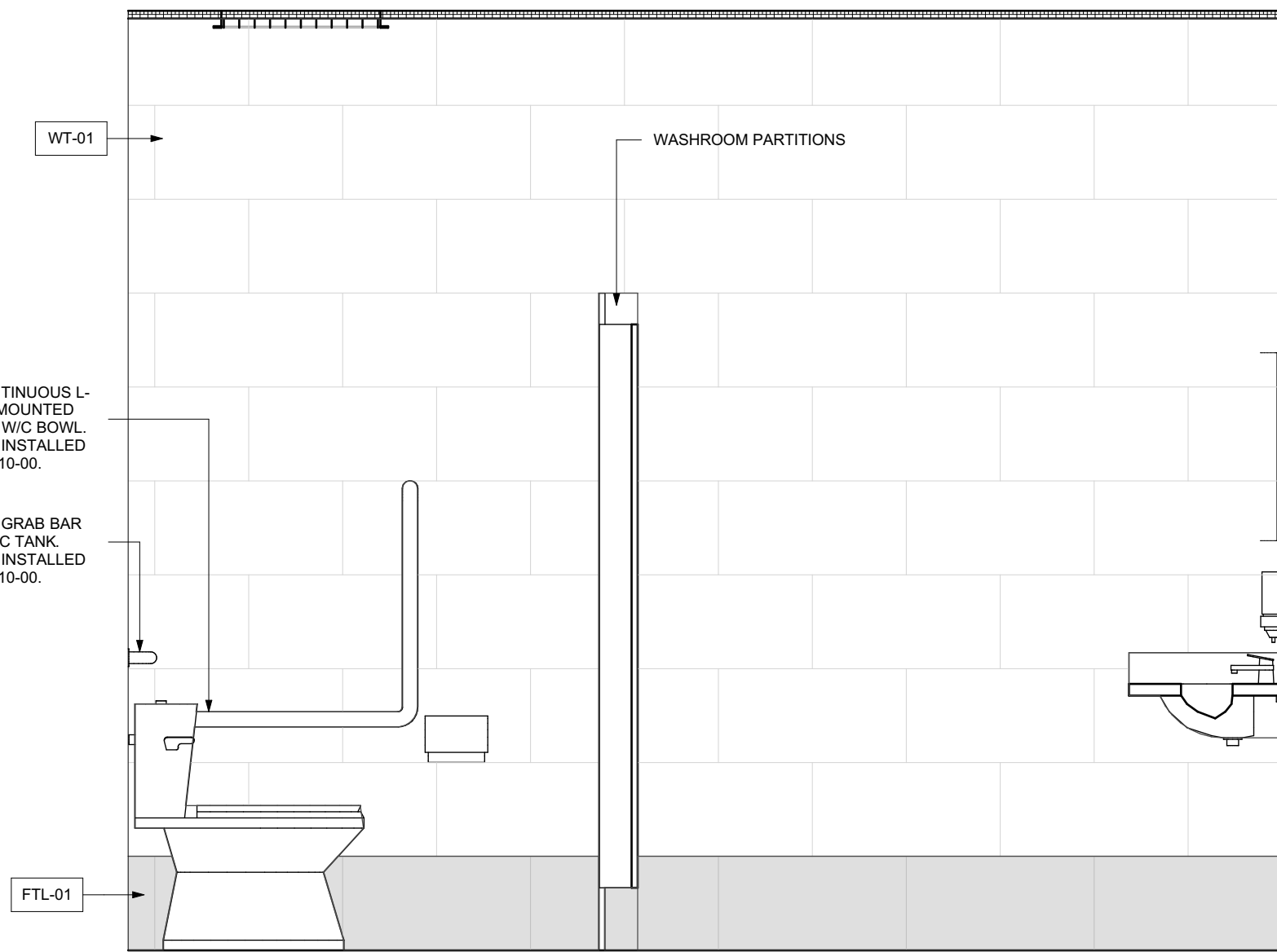
1
A-404
ENLARGED PLAN - PUBLIC WASHROOMS
SCALE: 1:20



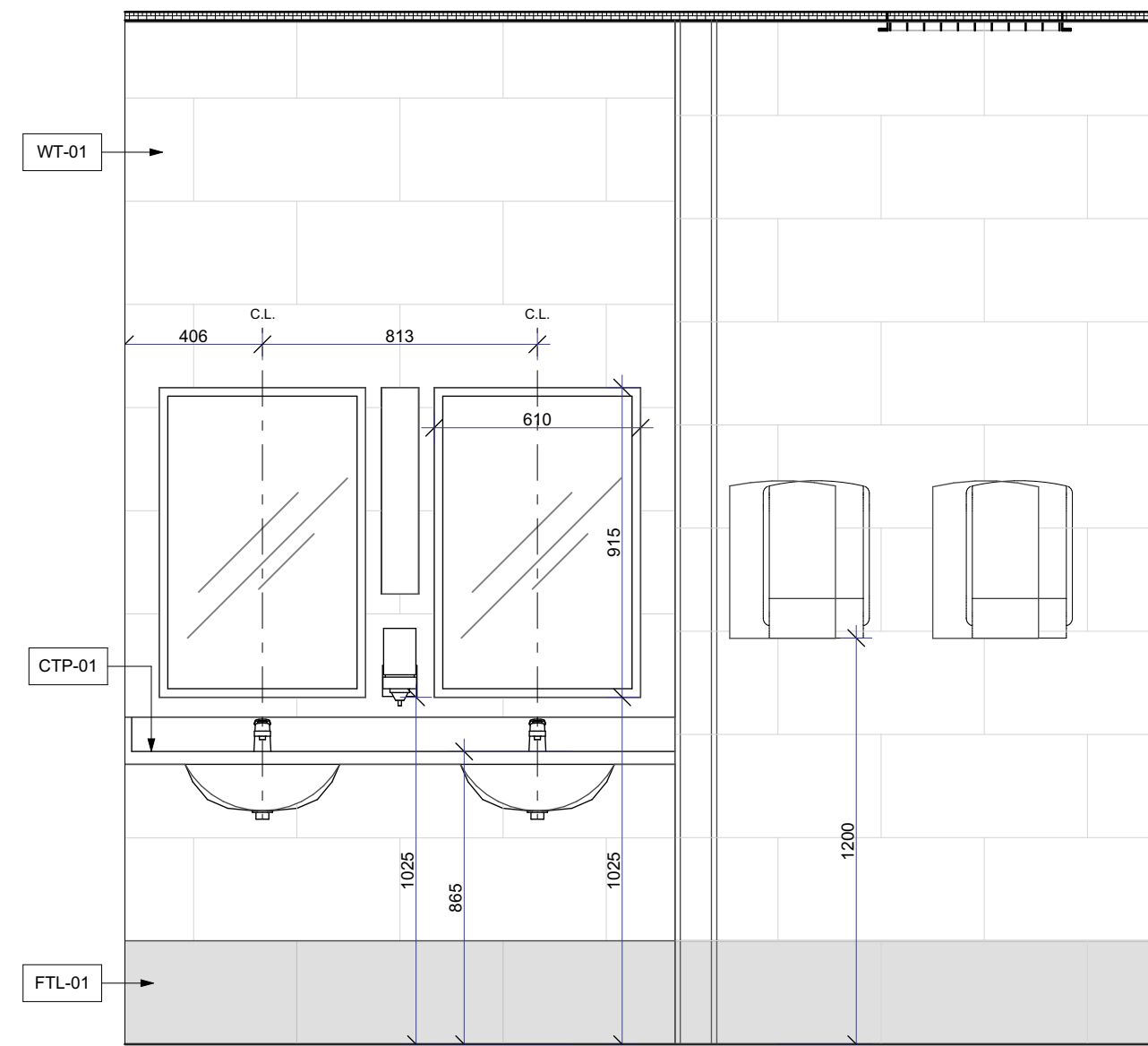
4
A-404
ENLARGED PLAN - STAFF WASHROOMS
SCALE: 1:20



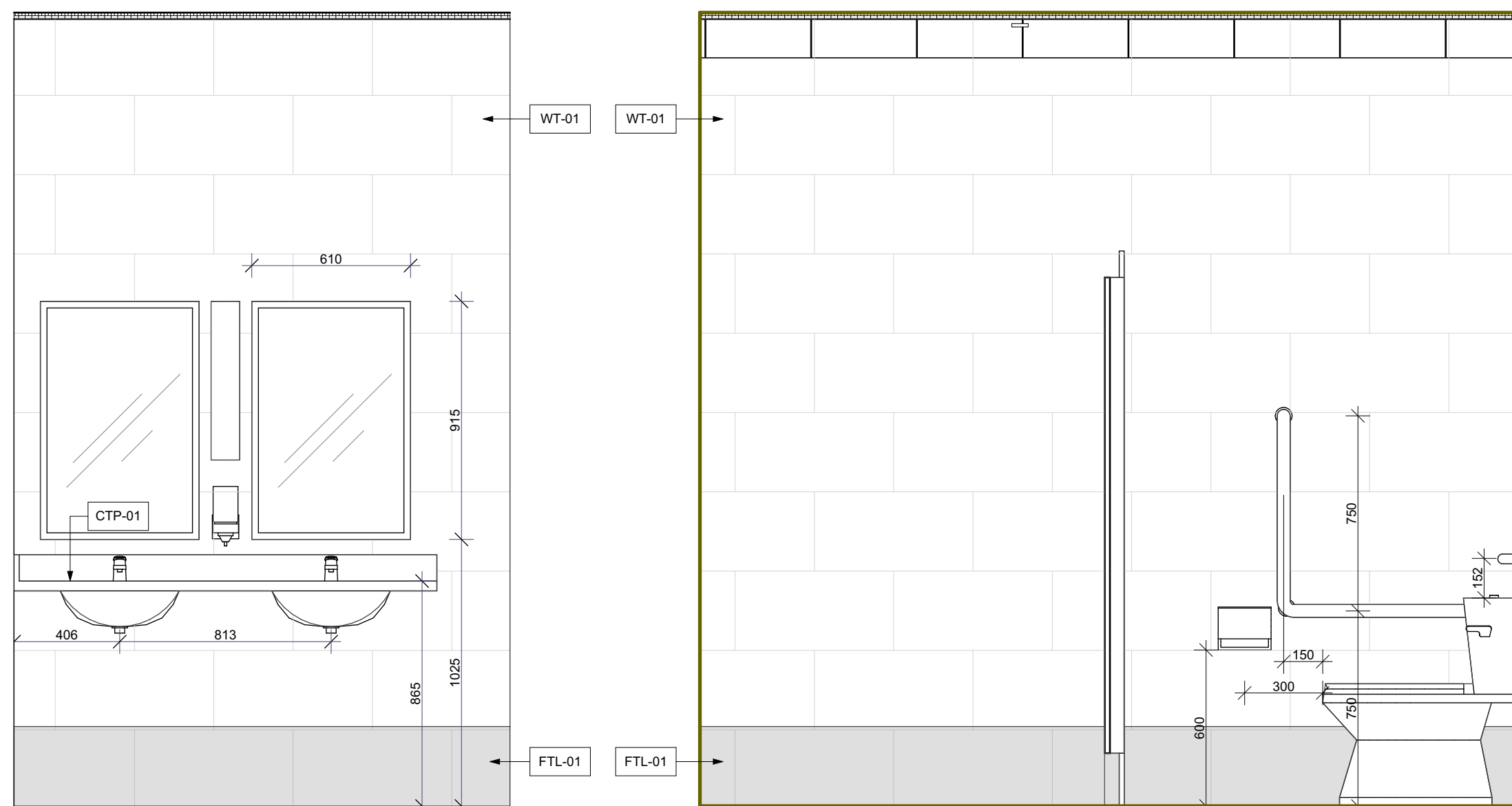
2
A-404
WOMEN'S W.R. ELEVATION A
SCALE: 1:20



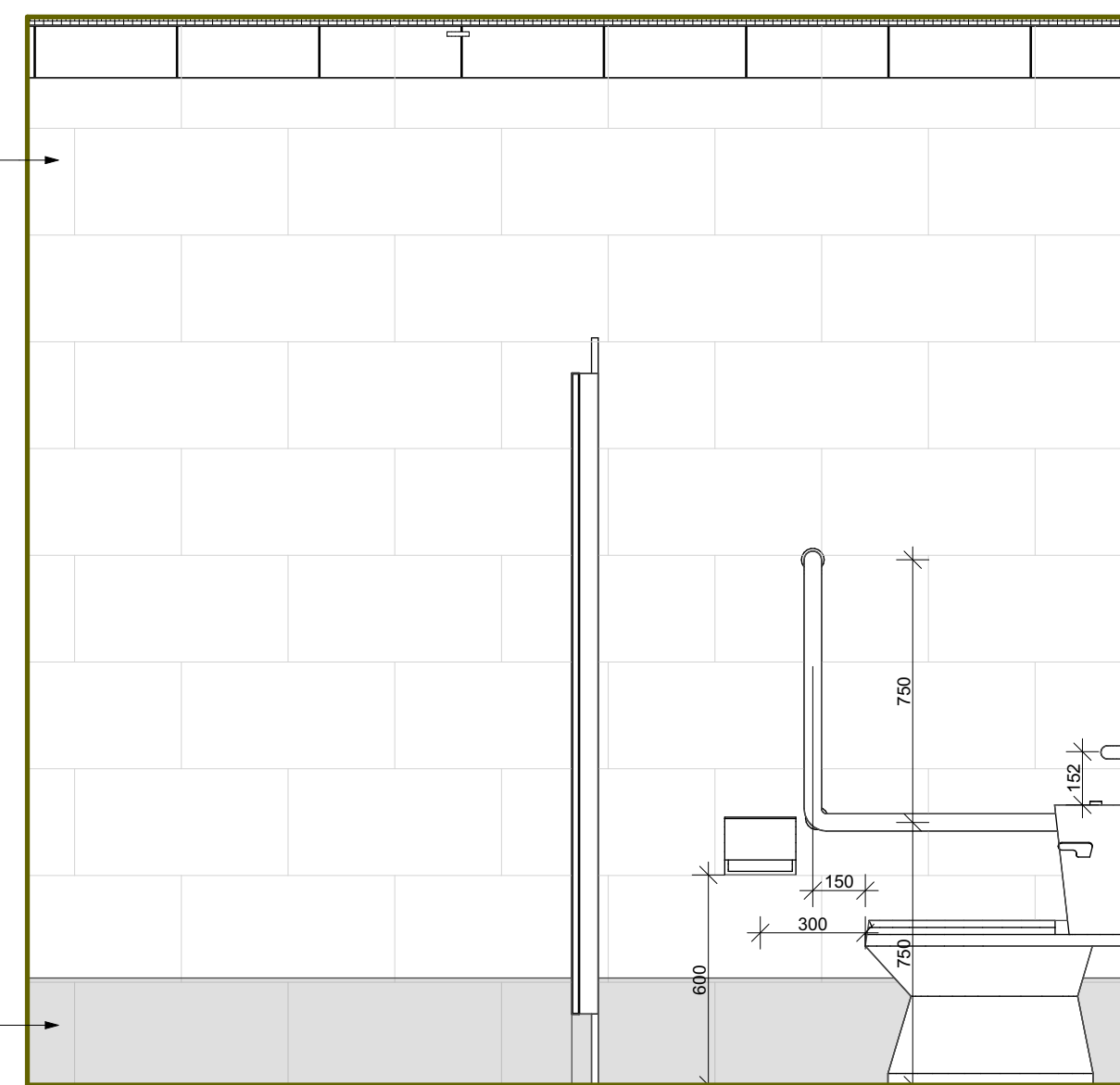
3
A-404
WOMEN'S W.R. ELEVATION B
SCALE: 1:20



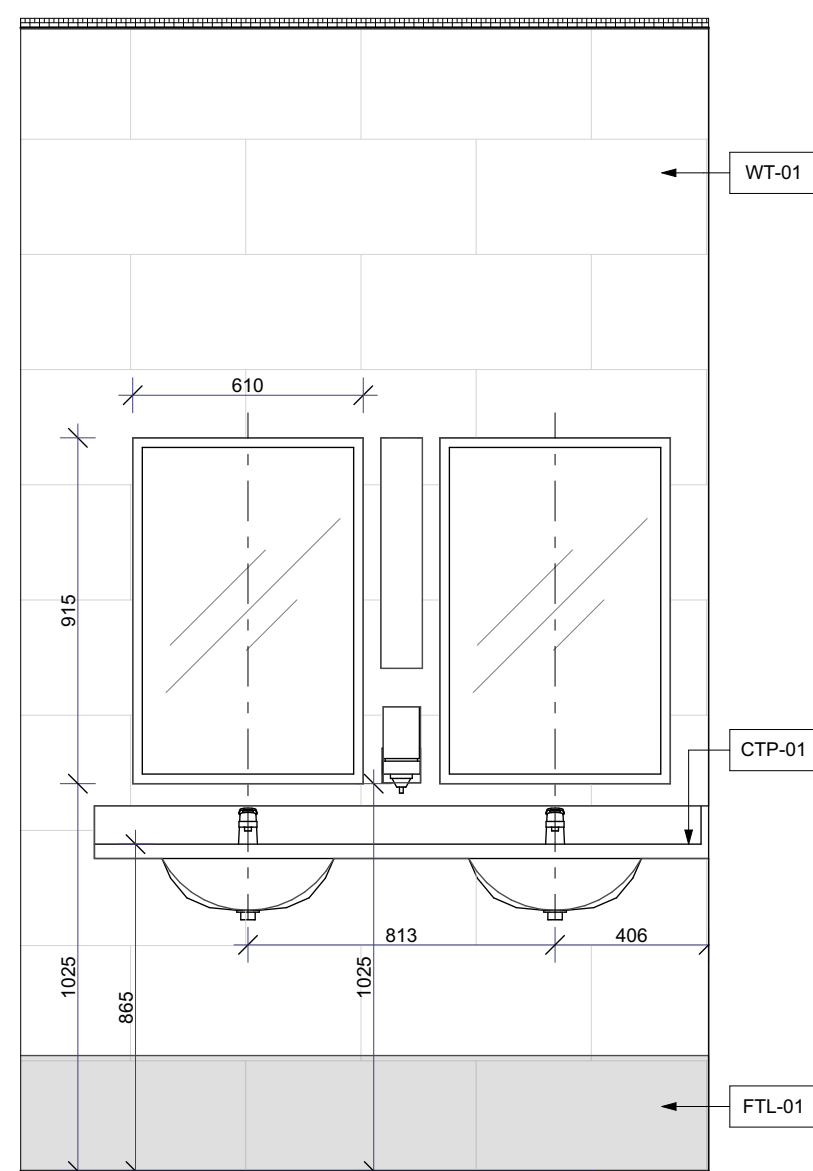
13
A-404
WOMEN'S W.R. ELEVATION C
SCALE: 1:20



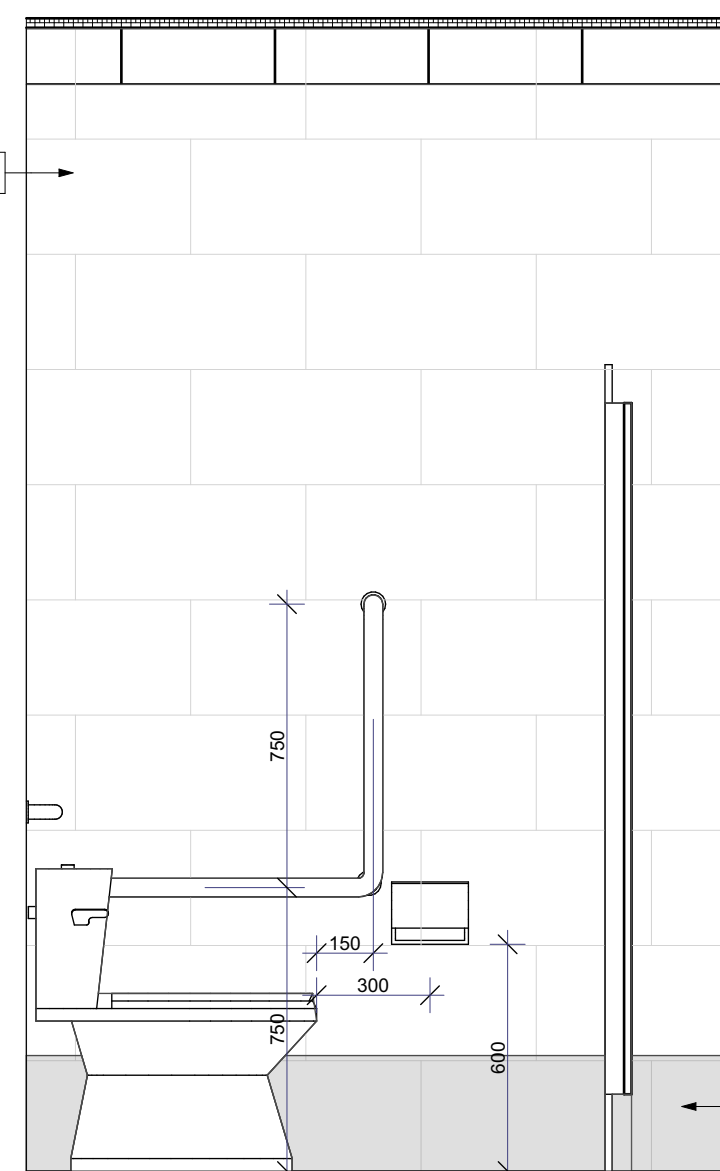
5
A-404
WOMEN'S STAFF W.R. ELEVATION A
SCALE: 1:20



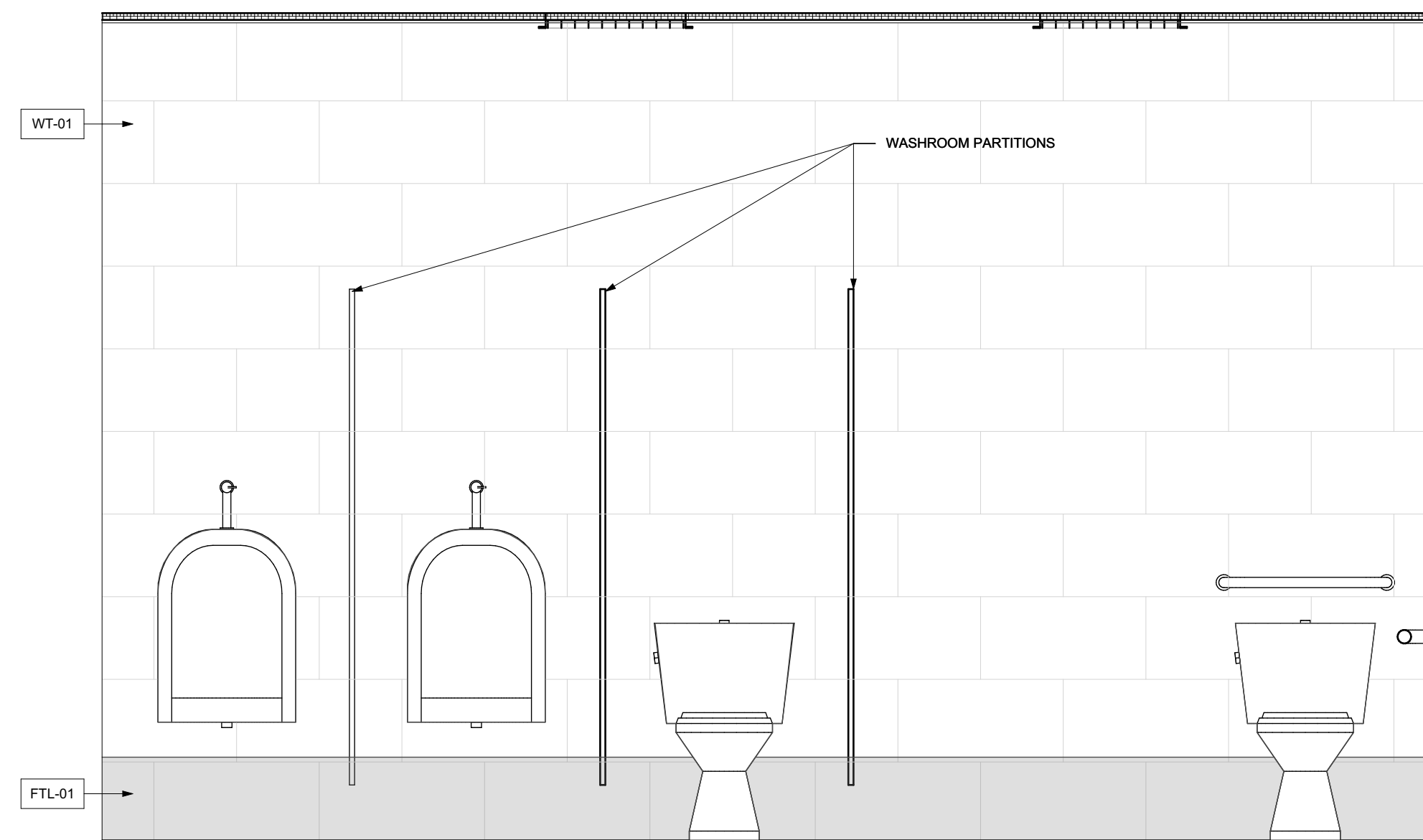
6
A-404
WOMEN'S STAFF W.R. ELEVATION B
SCALE: 1:20



7
A-404
MEN'S STAFF W.R. ELEVATION A
SCALE: 1:20



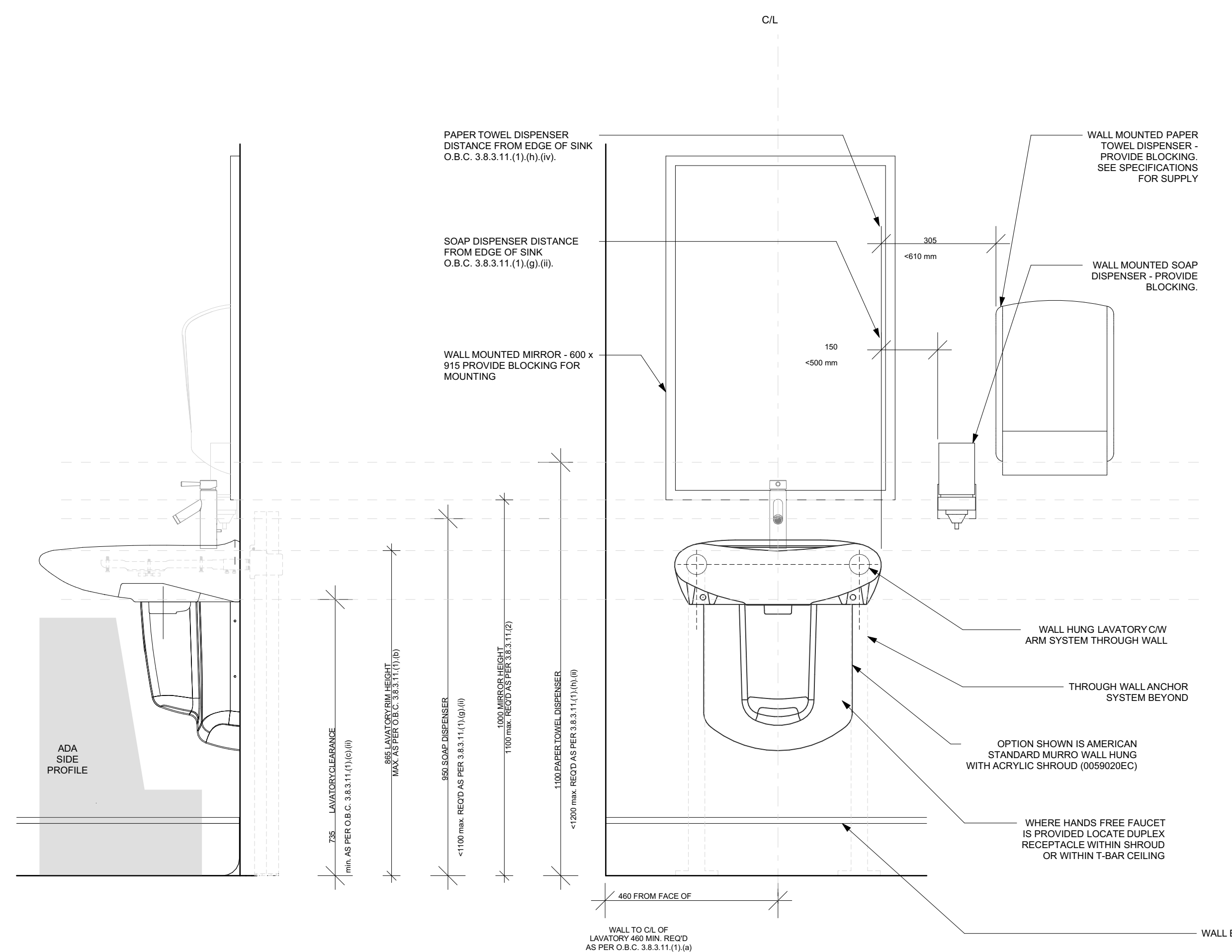
8
A-404
MEN'S STAFF W.R. ELEVATION B
SCALE: 1:20



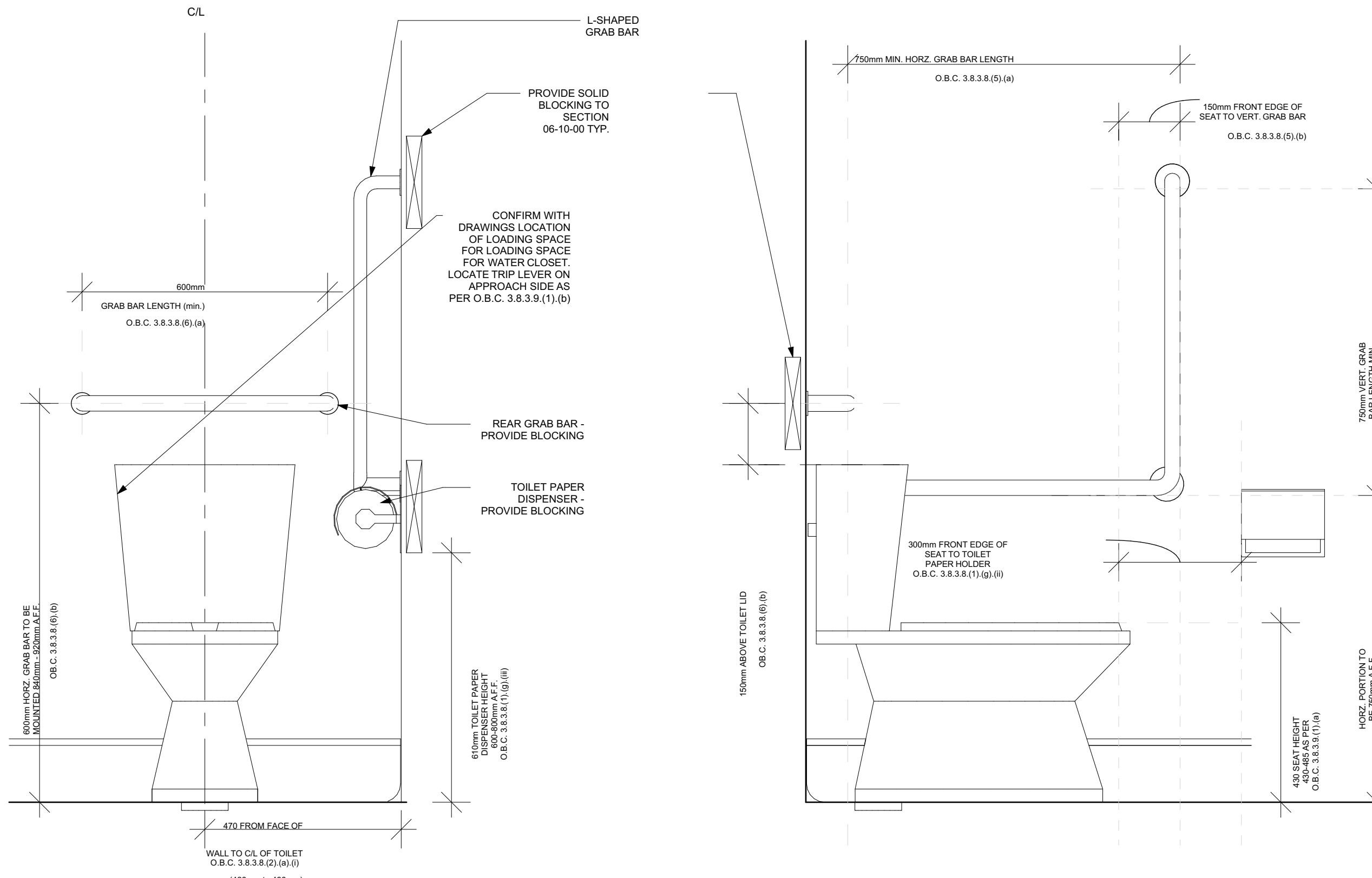
9
A-404
MEN'S STAFF W.R. ELEVATION C
SCALE: 1:20

DOOR FLOOR FINISH	DOOR FLOOR FINISH	DOOR FLOOR FINISH	DOOR FLOOR FINISH
01 Colour Code: FTL-01 02 Colour Code: FTL-02 03 Colour Code: FTL-03 04 Colour Code: FTL-04 05 Colour Code: FTL-05 06 Colour Code: FTL-06 07 Colour Code: FTL-07 08 Colour Code: FTL-08 09 Colour Code: FTL-09 10 Colour Code: FTL-10 11 Colour Code: FTL-11 12 Colour Code: FTL-12 13 Colour Code: FTL-13 14 Colour Code: FTL-14 15 Colour Code: FTL-15 16 Colour Code: FTL-16 17 Colour Code: FTL-17 18 Colour Code: FTL-18 19 Colour Code: FTL-19 20 Colour Code: FTL-20 21 Colour Code: FTL-21 22 Colour Code: FTL-22 23 Colour Code: FTL-23 24 Colour Code: FTL-24 25 Colour Code: FTL-25 26 Colour Code: FTL-26 27 Colour Code: FTL-27 28 Colour Code: FTL-28 29 Colour Code: FTL-29 30 Colour Code: FTL-30 31 Colour Code: FTL-31 32 Colour Code: FTL-32 33 Colour Code: FTL-33 34 Colour Code: FTL-34 35 Colour Code: FTL-35 36 Colour Code: FTL-36 37 Colour Code: FTL-37 38 Colour Code: FTL-38 39 Colour Code: FTL-39 40 Colour Code: FTL-40 41 Colour Code: FTL-41 42 Colour Code: FTL-42 43 Colour Code: FTL-43 44 Colour Code: FTL-44 45 Colour Code: FTL-45 46 Colour Code: FTL-46 47 Colour Code: FTL-47 48 Colour Code: FTL-48 49 Colour Code: FTL-49 50 Colour Code: FTL-50 51 Colour Code: FTL-51 52 Colour Code: FTL-52 53 Colour Code: FTL-53 54 Colour Code: FTL-54 55 Colour Code: FTL-55 56 Colour Code: FTL-56 57 Colour Code: FTL-57 58 Colour Code: FTL-58 59 Colour Code: FTL-59 60 Colour Code: FTL-60 61 Colour Code: FTL-61 62 Colour Code: FTL-62 63 Colour Code: FTL-63 64 Colour Code: FTL-64 65 Colour Code: FTL-65 66 Colour Code: FTL-66 67 Colour Code: FTL-67 68 Colour Code: FTL-68 69 Colour Code: FTL-69 70 Colour Code: FTL-70 71 Colour Code: FTL-71 72 Colour Code: FTL-72 73 Colour Code: FTL-73 74 Colour Code: FTL-74 75 Colour Code: FTL-75 76 Colour Code: FTL-76 77 Colour Code: FTL-77 78 Colour Code: FTL-78 79 Colour Code: FTL-79 80 Colour Code: FTL-80 81 Colour Code: FTL-81 82 Colour Code: FTL-82 83 Colour Code: FTL-83 84 Colour Code: FTL-84 85 Colour Code: FTL-85 86 Colour Code: FTL-86 87 Colour Code: FTL-87 88 Colour Code: FTL-88 89 Colour Code: FTL-89 90 Colour Code: FTL-90 91 Colour Code: FTL-91 92 Colour Code: FTL-92 93 Colour Code: FTL-93 94 Colour Code: FTL-94 95 Colour Code: FTL-95 96 Colour Code: FTL-96 97 Colour Code: FTL-97 98 Colour Code: FTL-98 99 Colour Code: FTL-99 100 Colour Code: FTL-100	01 Colour Code: FTL-01 02 Colour Code: FTL-02 03 Colour Code: FTL-03 04 Colour Code: FTL-04 05 Colour Code: FTL-05 06 Colour Code: FTL-06 07 Colour Code: FTL-07 08 Colour Code: FTL-08 09 Colour Code: FTL-09 10 Colour Code: FTL-10 11 Colour Code: FTL-11 12 Colour Code: FTL-12 13 Colour Code: FTL-13 14 Colour Code: FTL-14 15 Colour Code: FTL-15 16 Colour Code: FTL-16 17 Colour Code: FTL-17 18 Colour Code: FTL-18 19 Colour Code: FTL-19 20 Colour Code: FTL-20 21 Colour Code: FTL-21 22 Colour Code: FTL-22 23 Colour Code: FTL-23 24 Colour Code: FTL-24 25 Colour Code: FTL-25 26 Colour Code: FTL-26 27 Colour Code: FTL-27 28 Colour Code: FTL-28 29 Colour Code: FTL-29 30 Colour Code: FTL-30 31 Colour Code: FTL-31 32 Colour Code: FTL-32 33 Colour Code: FTL-33 34 Colour Code: FTL-34 35 Colour Code: FTL-35 36 Colour Code: FTL-36 37 Colour Code: FTL-37 38 Colour Code: FTL-38 39 Colour Code: FTL-39 40 Colour Code: FTL-40 41 Colour Code: FTL-41 42 Colour Code: FTL-42 43 Colour Code: FTL-43 44 Colour Code: FTL-44 45 Colour Code: FTL-45 46 Colour Code: FTL-46 47 Colour Code: FTL-47 48 Colour Code: FTL-48 49 Colour Code: FTL-49 50 Colour Code: FTL-50 51 Colour Code: FTL-51 52 Colour Code: FTL-52 53 Colour Code: FTL-53 54 Colour Code: FTL-54 55 Colour Code: FTL-55 56 Colour Code: FTL-56 57 Colour Code: FTL-57 58 Colour Code: FTL-58 59 Colour Code: FTL-59 60 Colour Code: FTL-60 61 Colour Code: FTL-61 62 Colour Code: FTL-62 63 Colour Code: FTL-63 64 Colour Code: FTL-64 65 Colour Code: FTL-65 66 Colour Code: FTL-66 67 Colour Code: FTL-67 68 Colour Code: FTL-68 69 Colour Code: FTL-69 70 Colour Code: FTL-70 71 Colour Code: FTL-71 72 Colour Code: FTL-72 73 Colour Code: FTL-73 74 Colour Code: FTL-74 75 Colour Code: FTL-75 76 Colour Code: FTL-76 77 Colour Code: FTL-77 78 Colour Code: FTL-78 79 Colour Code: FTL-79 80 Colour Code: FTL-80 81 Colour Code: FTL-81 82 Colour Code: FTL-82 83 Colour Code: FTL-83 84 Colour Code: FTL-84 85 Colour Code: FTL-85 86 Colour Code: FTL-86 87 Colour Code: FTL-87 88 Colour Code: FTL-88 89 Colour Code: FTL-89 90 Colour Code: FTL-90 91 Colour Code: FTL-91 92 Colour Code: FTL-92 93 Colour Code: FTL-93 94 Colour Code: FTL-94 95 Colour Code: FTL-95 96 Colour Code: FTL-96 97 Colour Code: FTL-97 98 Colour Code: FTL-98 99 Colour Code: FTL-99 100 Colour Code: FTL-100	01 Colour Code: FTL-01 02 Colour Code: FTL-02 03 Colour Code: FTL-03 04 Colour Code: FTL-04 05 Colour Code: FTL-05 06 Colour Code: FTL-06 07 Colour Code: FTL-07 08 Colour Code: FTL-08 09 Colour Code: FTL-09 10 Colour Code: FTL-10 11 Colour Code: FTL-11 12 Colour Code: FTL-12 13 Colour Code: FTL-13 14 Colour Code: FTL-14 15 Colour Code: FTL-15 16 Colour Code: FTL-16 17 Colour Code: FTL-17 18 Colour Code: FTL-18 19 Colour Code: FTL-19 20 Colour Code: FTL-20 21 Colour Code: FTL-21 22 Colour Code: FTL-22 23 Colour Code: FTL-23 24 Colour Code: FTL-24 25 Colour Code: FTL-25 26 Colour Code: FTL-26 27 Colour Code: FTL-27 28 Colour Code: FTL-28 29 Colour Code: FTL-29 30 Colour Code: FTL-30 31 Colour Code: FTL-31 32 Colour Code: FTL-32 33 Colour Code: FTL-33 34 Colour Code: FTL-34 35 Colour Code: FTL-35 36 Colour Code: FTL-36 37 Colour Code: FTL-37 38 Colour Code: FTL-38 39 Colour Code: FTL-39 40 Colour Code: FTL-40 41 Colour Code: FTL-41 42 Colour Code: FTL-42 43 Colour Code: FTL-43 44 Colour Code: FTL-44 45 Colour Code: FTL-45 46 Colour Code: FTL-46 47 Colour Code: FTL-47 48 Colour Code: FTL-48 49 Colour Code: FTL-49 50 Colour Code: FTL-50 51 Colour Code: FTL-51 52 Colour Code: FTL-52 53 Colour Code: FTL-53 54 Colour Code: FTL-54 55 Colour Code: FTL-55 56 Colour Code: FTL-56 57 Colour Code: FTL-57 58 Colour Code: FTL-58 59 Colour Code: FTL-59 60 Colour Code: FTL-60 61 Colour Code: FTL-61 62 Colour Code: FTL-62 63 Colour Code: FTL-63 64 Colour Code: FTL-64 65 Colour Code: FTL-65 66 Colour Code: FTL-66 67 Colour Code: FTL-67 68 Colour Code: FTL-68 69 Colour Code: FTL-69 70 Colour Code: FTL-70 71 Colour Code: FTL-71 72 Colour Code: FTL-72 73 Colour Code: FTL-73 74 Colour Code: FTL-74 75 Colour Code: FTL-75 76 Colour Code: FTL-76 77 Colour Code: FTL-77 78 Colour Code: FTL-78 79 Colour Code: FTL-79 80 Colour Code: FTL-80 81 Colour Code: FTL-81 82 Colour Code: FTL-82 83 Colour Code: FTL-83 84 Colour Code: FTL-84 85 Colour Code: FTL-85 86 Colour Code: FTL-86 87 Colour Code: FTL-87 88 Colour Code: FTL-88 89 Colour Code: FTL-89 90 Colour Code: FTL-90 91 Colour Code: FTL-91 92 Colour Code: FTL-92 93 Colour Code: FTL-93 94 Colour Code: FTL-94 95 Colour Code: FTL-95 96 Colour Code: FTL-96 97 Colour Code: FTL-97 98 Colour Code: FTL-98 99 Colour Code: FTL-99 100 Colour Code: FTL-100	01 Colour Code: FTL-01 02 Colour Code: FTL-02 03 Colour Code: FTL-03 04 Colour Code: FTL-04 05 Colour Code: FTL-05 06 Colour Code: FTL-06 07 Colour Code: FTL-07 08 Colour Code: FTL-08 09 Colour Code: FTL-09 10 Colour Code: FTL-10 11 Colour Code: FTL-11 12 Colour Code: FTL-12 13 Colour Code: FTL-13 14 Colour Code: FTL-14 15 Colour Code: FTL-15 16 Colour Code: FTL-16 17 Colour Code: FTL-17 18 Colour Code: FTL-18 19 Colour Code: FTL-19 20 Colour Code: FTL-20 21 Colour Code: FTL-21 22 Colour Code: FTL-22 23 Colour Code: FTL-23 24 Colour Code: FTL-24 25 Colour Code: FTL-25 26 Colour Code: FTL-26 27 Colour Code: FTL-27 28 Colour Code: FTL-28 29 Colour Code: FTL-29 30 Colour Code: FTL-30 31 Colour Code: FTL-31 32 Colour Code: FTL-32 33 Colour Code: FTL-33 34 Colour Code: FTL-34 35 Colour Code: FTL-35 36 Colour Code: FTL-36 37 Colour Code: FTL-37 38 Colour Code: FTL-38 39 Colour Code: FTL-39 40 Colour Code: FTL-40 41 Colour Code: FTL-41 42 Colour Code: FTL-42 43 Colour Code: FTL-43 44 Colour Code: FTL-44 45 Colour Code: FTL-45 46 Colour Code: FTL-46 47 Colour Code: FTL-47 48 Colour Code: FTL-48 49 Colour Code: FTL-49 50 Colour Code: FTL-50 51 Colour Code: FTL-51 52 Colour Code: FTL-52 53 Colour Code: FTL-53 54 Colour Code: FTL-54 55 Colour Code: FTL-55 56 Colour Code: FTL-56 57 Colour Code: FTL-57 58 Colour Code: FTL-58 59 Colour Code: FTL-59 60 Colour Code: FTL-60 61 Colour Code: FTL-61 62 Colour Code: FTL-62 63 Colour Code: FTL-63 64 Colour Code: FTL-64 65 Colour Code: FTL-65 66 Colour Code: FTL-66 67 Colour Code: FTL-67 68 Colour Code: FTL-68 69 Colour Code: FTL-69 70 Colour Code: FTL-70 71 Colour Code: FTL-71 72 Colour Code: FTL-72 73 Colour Code: FTL-73 74 Colour Code: FTL-74 75 Colour Code: FTL-75 76 Colour Code: FTL-76 77 Colour Code: FTL-77 78 Colour Code: FTL-78 79 Colour Code: FTL-79 80 Colour Code: FTL-80 81 Colour Code: FTL-81 82 Colour Code: FTL-82 83 Colour Code: FTL-83 84 Colour Code: FTL-84 85 Colour Code: FTL-85 86 Colour Code: FTL-86 87 Colour Code: FTL-87 88 Colour Code: FTL-88 89 Colour Code: FTL-89 90 Colour Code: FTL-90 91 Colour Code: FTL-91 92 Colour Code: FTL-92 93 Colour Code: FTL-93 94 Colour Code: FTL-94 95 Colour Code: FTL-95 96 Colour Code: FTL-96 97 Colour Code: FTL-97 98 Colour Code: FTL-98 99 Colour Code: FTL-99 100 Colour Code: FTL-100

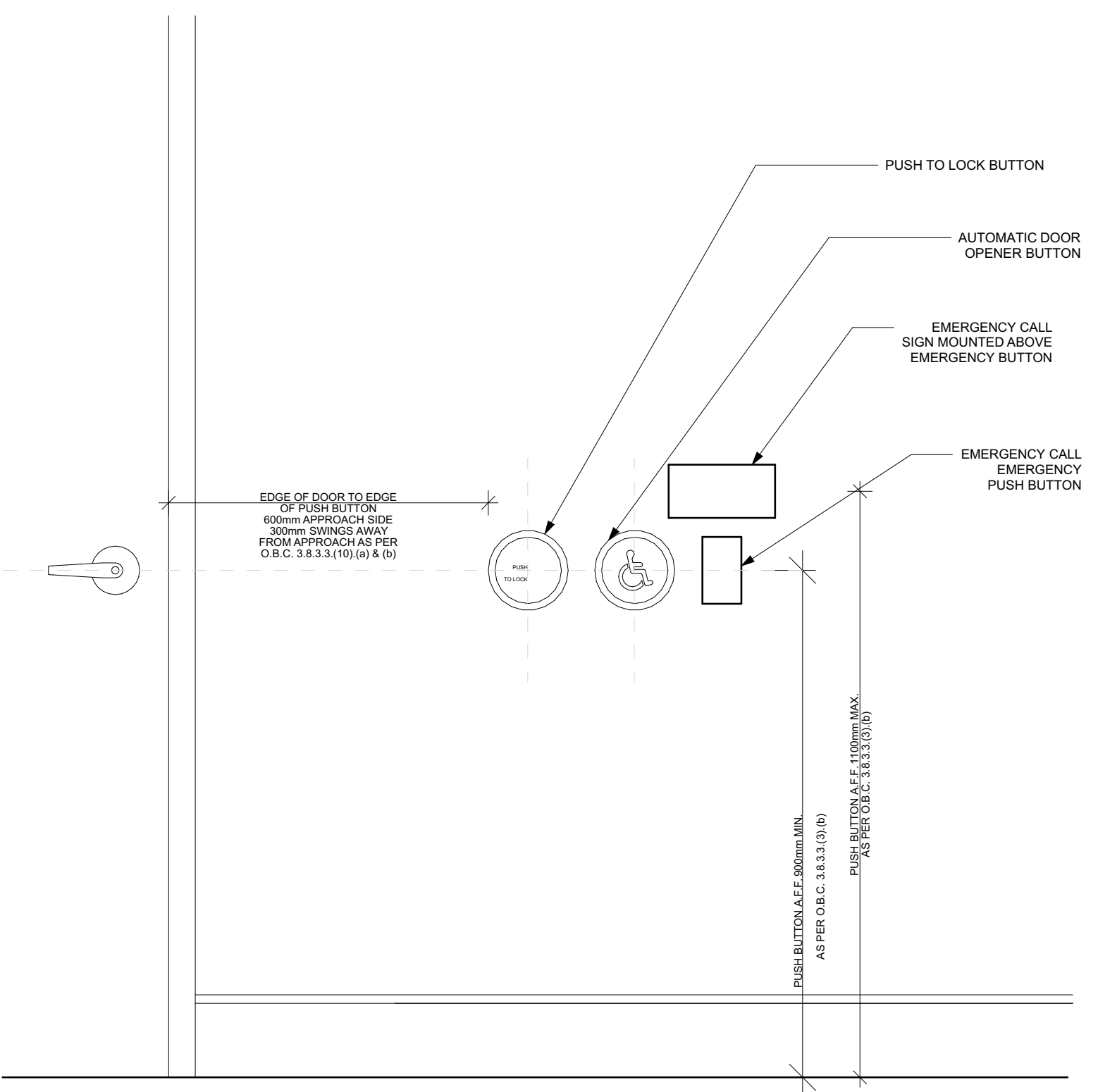
ABBREVIATIONS
FD - FLOOR DRAIN
ARCHITECTURAL NOTES
A-01 IN ALL CASES WHERE A SINGLE LAYER GYPSUM BOARD IS SHOWN, ALL JOINTS ARE TO BE SUPPORTED WITH FRAMING MEMBERS. DO NOT LOCATE ELECTRICAL BOXES ON OPPOSITE SIDES OF WALL FROM EACH OTHER WITHIN 600mm OF EACH OTHER. SEAL WALLS COMPLETELY TO FLOORS, ROOF STRUCTURE AND ADJACENT WALLS WITH ACoustICAL SEALING AT STRUCTURAL, MECHANICAL AND ELECTRICAL PENETRATIONS (E. BEAMS, DUCTS, CONDUITS AND ELECTRICAL BOXES ETC.) CUT GYPSUM BOARD TO 13mm FROM STRUCTURAL, MECHANICAL, ELECTRICAL, MEMBER AND SEAL JOINT WITH ACoustICAL SEALING. ACoustICAL SEALING IS TO BE FINE RIBBED ACoustICAL SEALANT AT WALLS WITH A FINE RIBBED PROVIDE PAPERLESS GYPSUM BOARD ALL LAYERS IN PLACE OF REGULAR GYPSUM BOARD WITHIN ALL WASHROOMS, ANTOIRAL ROOMS, AND THE LUNCH ROOM.
A-04 WALL TO BE PROVIDED WITH ACoustICAL BATT INSULATION.
A-07 AREA OF WALL TO BE BUILT OUT WITH METAL STUDS AND GYPSUM BOARD TO ENCLOSE DUCT AND/OR DRAIN. COORDINATE ALL LOCATIONS WITH MECHANICAL DRAWINGS.



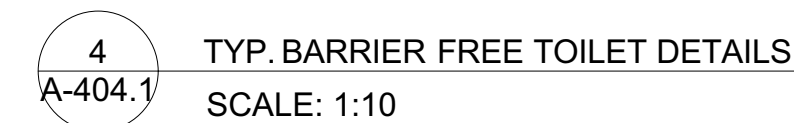
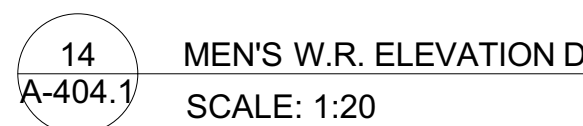
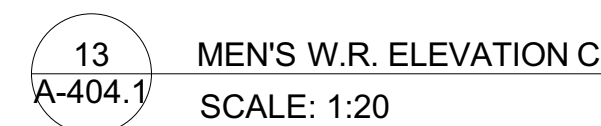
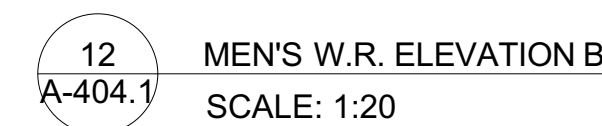
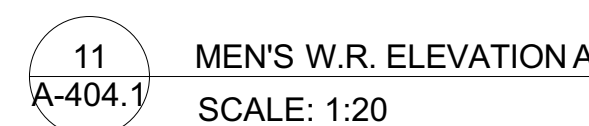
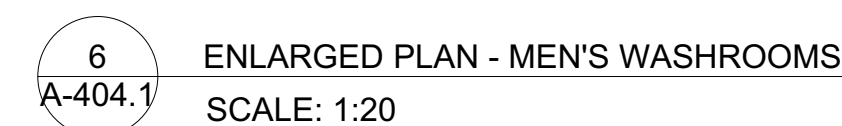
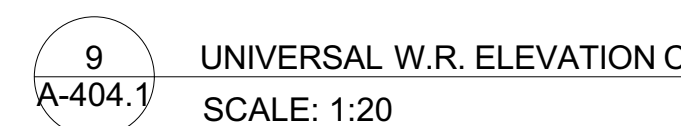
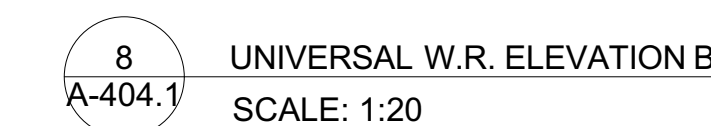
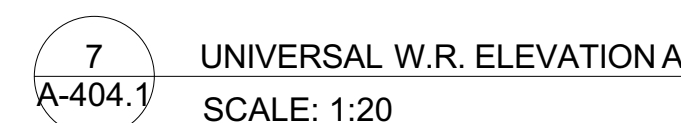
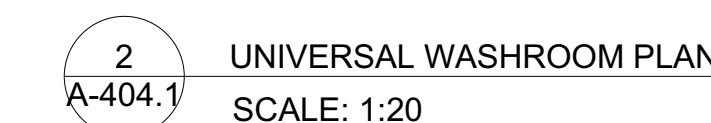
10
A-404
TYP. BARRIER FREE LAVATORY MOUNTING DETAILS
SCALE: 1:10



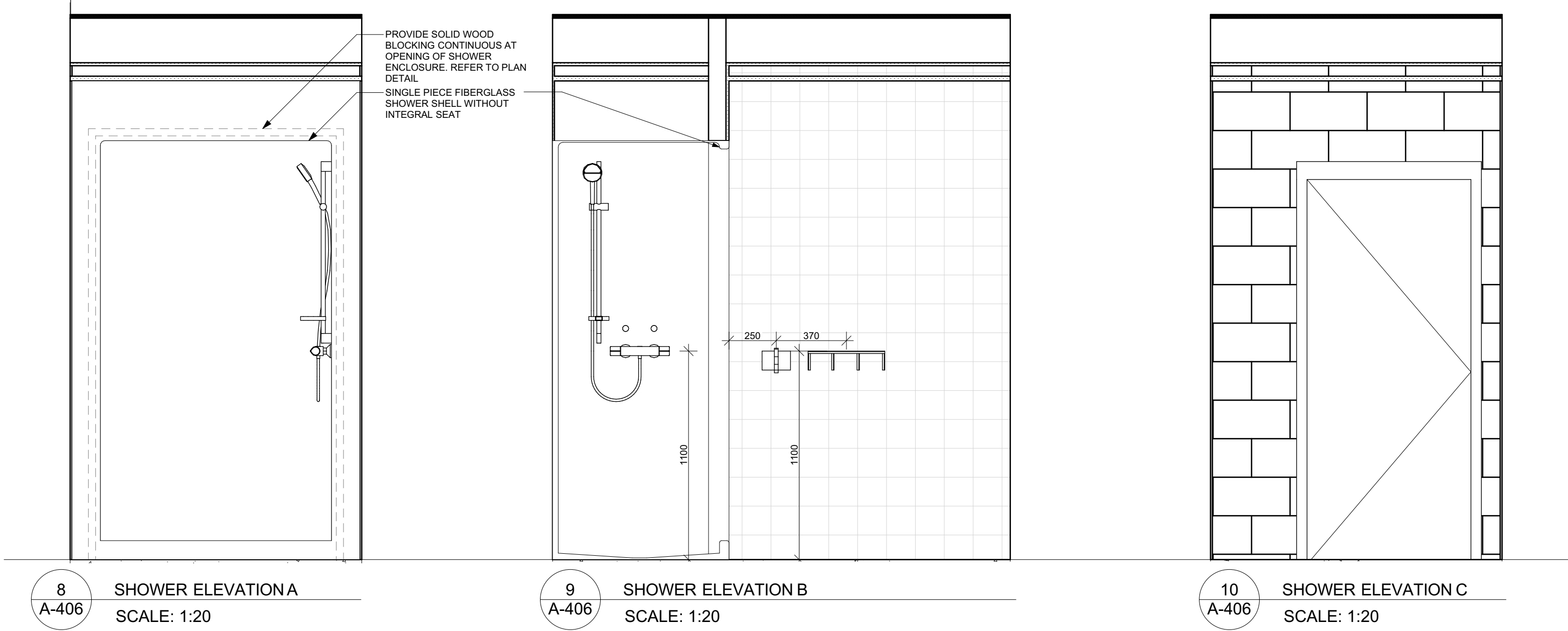
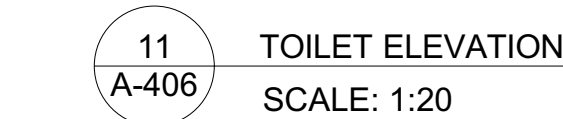
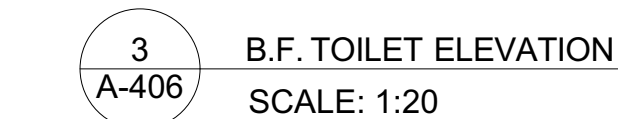
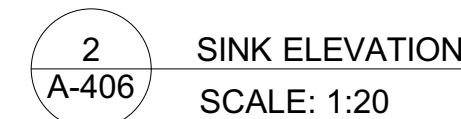
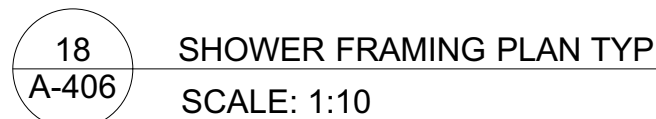
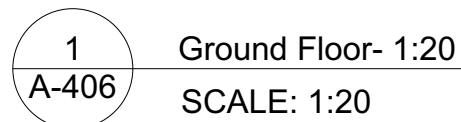
11
A-404
TYP. BARRIER FREE TOILET DETAILS
SCALE: 1:10

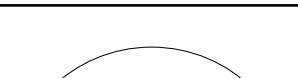



12
A-404
TYP. BARRIER FREE PUSH BUTTON DETAILS
SCALE: 1:10

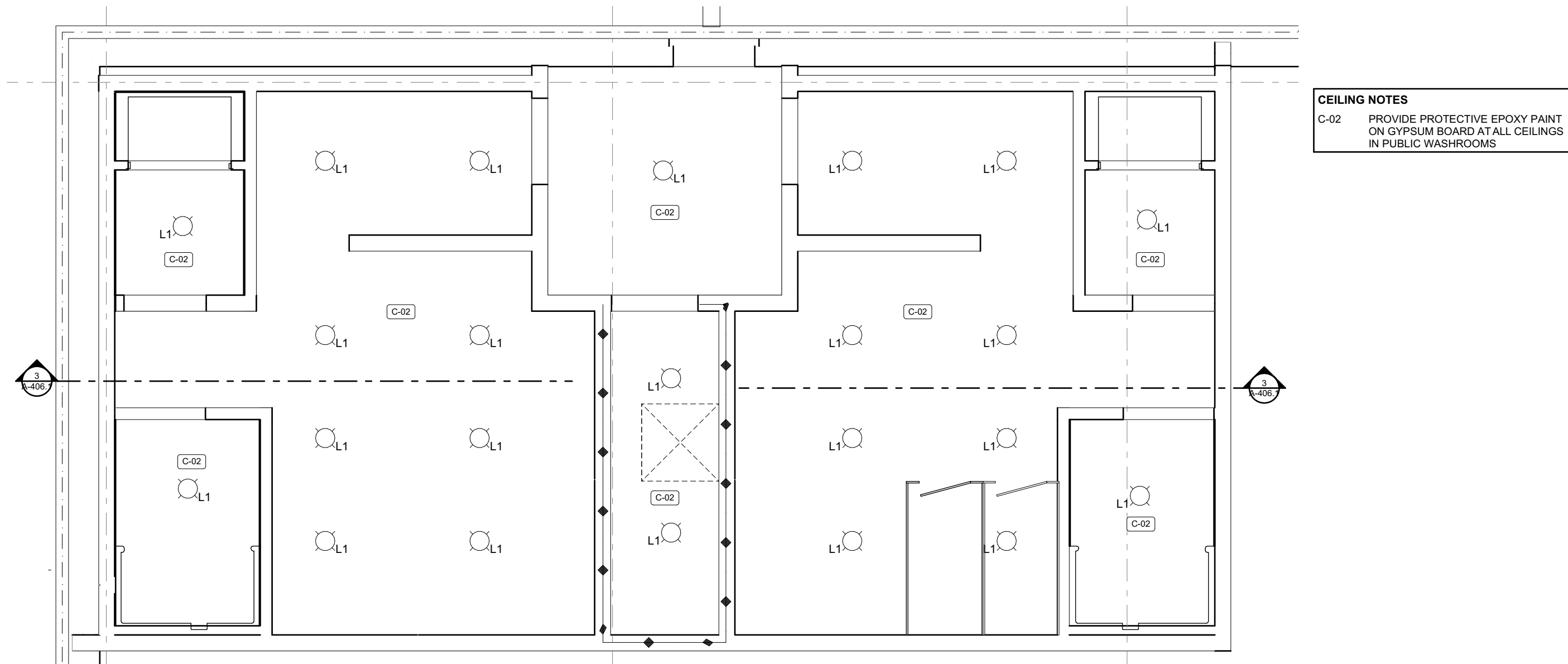


03	ADD-02	ADDENDUM 03	2025.11.2
01		ISSUED FOR TENDER	2025.10.2
Rev'd	Change	Revision	Date

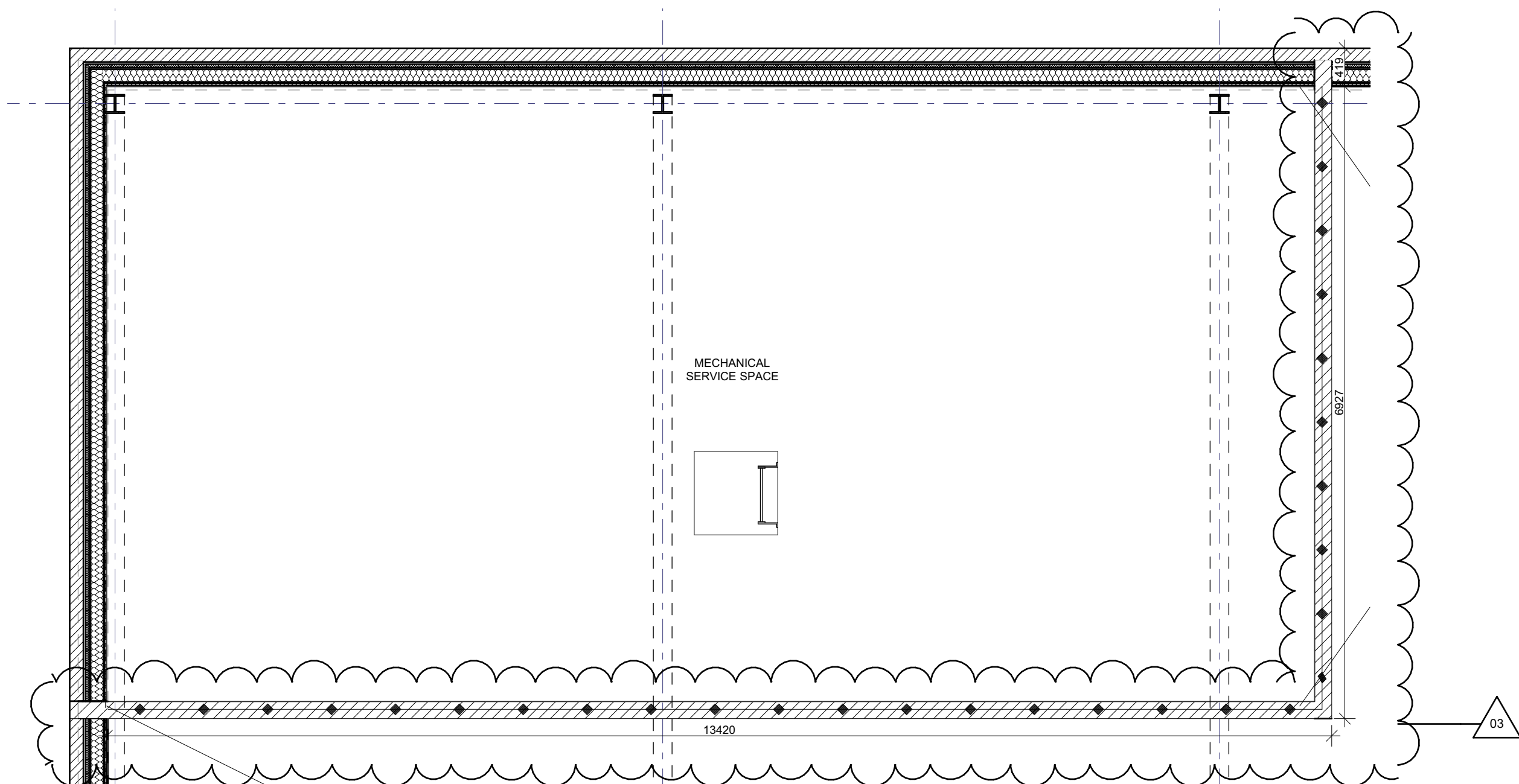


 <p>TOWN OF SOUTH BRUCE PENINSULA</p>				<p>APPROVED BY THE BOARD OF REVENUE</p>	
<p>Designs are the property of G. M. Diemert Architect Inc. and shall not be reproduced or altered without the written consent of the architect.</p>		<p>G. M. DIEMERT ARCHITECT INC. Suite 201 1957 Fourth Avenue East OWEN SOUND, ONTARIO, N4K 2N9, 519-250-1919</p>		<p>TOWN: Town of South Bruce Peninsula 315 George Street Warton, NH 270</p> <p>PROJECT: New Townhall Offices 370 William Street, Warton, Ontario</p>	

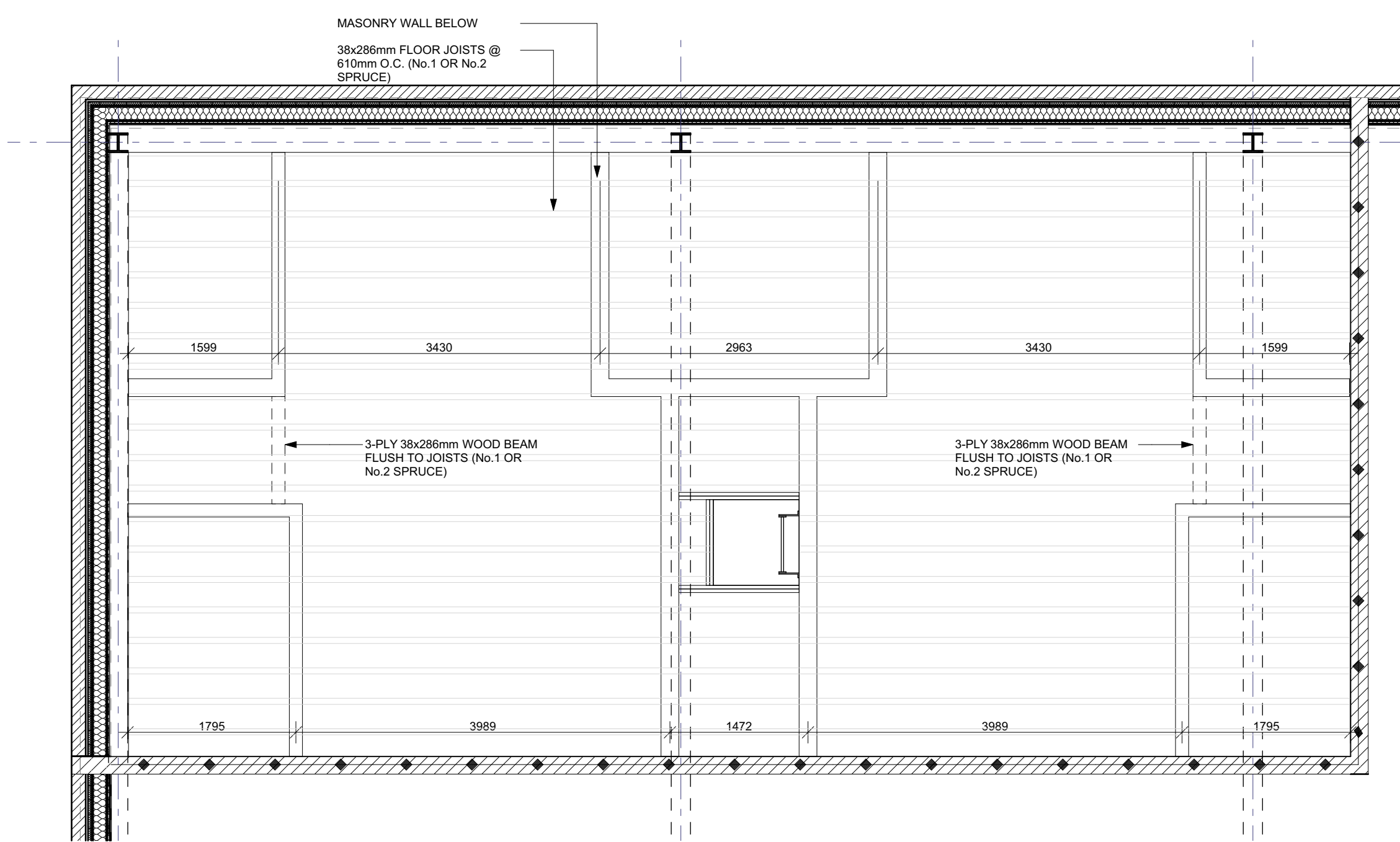
E1	A20-02	ADDENDUM E2	2025.11.21
		ADDENDUM E1	2025.11.19
E2		SOWED FOR TENDER	2025.10.28
Rev'd	Change	Description	Type
Revision History			
Drawing Name			
PUBLIC WASHROOM DETAILS			
Drawing Number:		Project Number:	
A-406		2404	
		ORIGINAL DRAWING SIZE: ARCH E (1220 x	



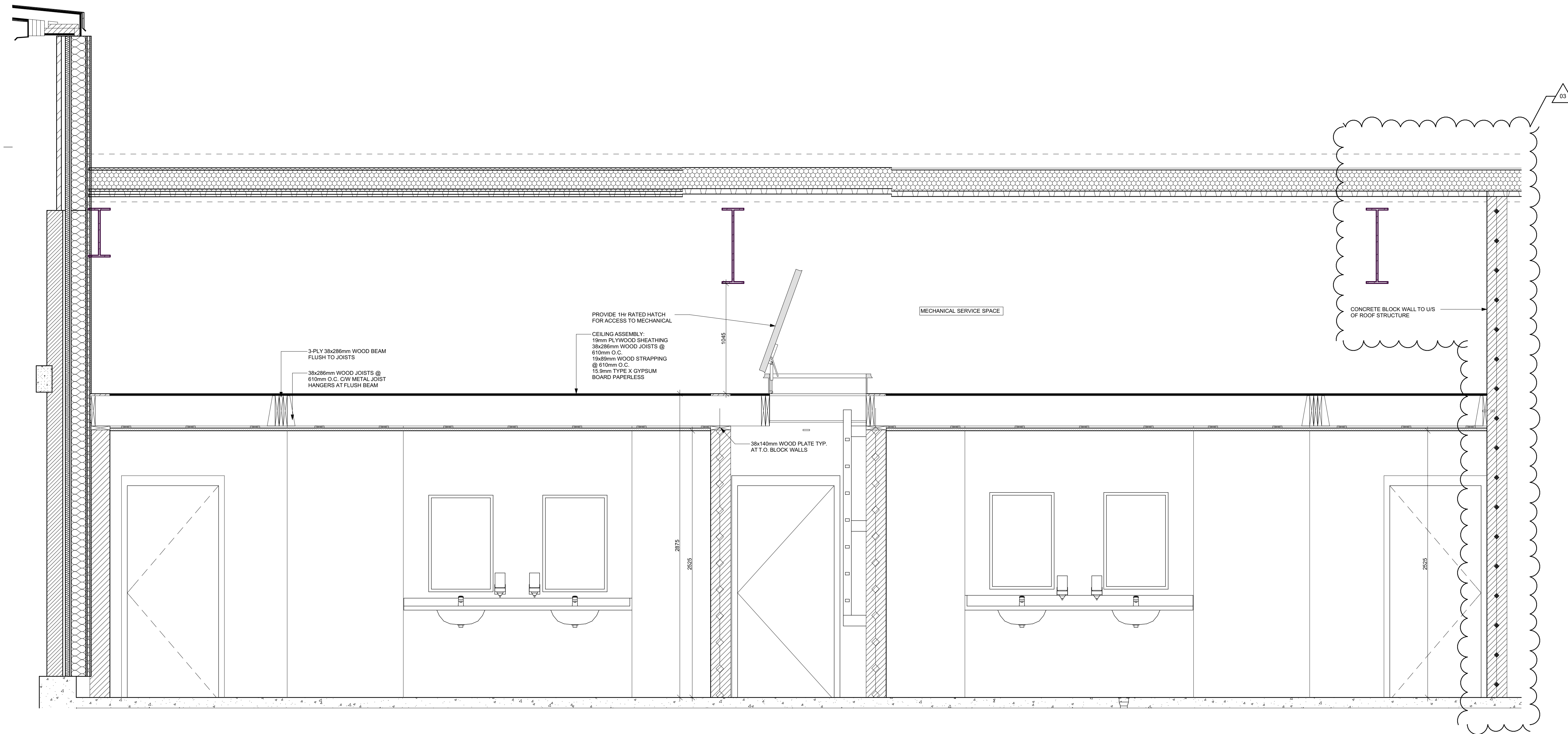
1 PUBLIC WASHROOM REFLECTED CEILING PLAN
SCALE: 1:50



2 PUBLIC WASHROOM ATTIC PLAN
SCALE: 1:50



4 ATTIC STRUCTURAL PLAN
SCALE: 1:50



3 SECTION THROUGH PUBLIC WASHROOMS
SCALE: 1:20

