

November 14, 2025

Client: G.M. Diemert Architect Inc.
957 4th Ave. E.,
Owen Sound, ON N4K 2N9

RE: Town of South Bruce Peninsula Town Hall
Wiarton, ON

Job #: 24099

Attn: Grant Diemert, OAA/Bryce Jaekel

ADDENDUM 02

MECHANICAL

Item 1

- 1.0 Reference Attached Reissued Drawings M401 and M601
 - .1 Revise gas meter service location and piping up to roof, as shown on attached reissued drawings M401 and M601.

Item 2

- 2.0 Reference Attached Reissued Drawings M101 and M501
 - .1 Revise diffuser type serving Archives Room 016a to suit Architect updated RCP plans, as shown on attached reissued drawings M101 and M501.

ELECTRICAL

Item 1

- 1.0 No electrical content.



Hamza Bagui, M.Eng.

Mechanical Designer

24099 Addendum 02 (M-Archives Room & Gas Meter)(var. reissued dwgs) Nov 14 25

kk



PACKAGED HVAC UNIT SCHEDULE											CAPACITY INDICATED ON SCHEDULE REFER TO SPECIFICATION FOR CONSTRUCTION STANDARDS, ACCESSORIES AND ADDITIONAL INFORMATION.	
Item	Type	Nominal Capacity		Cool MBH	ESP in wc	Motor hp	Electrical Data			Acceptable Manufacturer & Model	Remarks	
		tons	cfm				Heat MBH	Voltage	MCA			MOCP
HVAC-1	PACKAGED ROOFTOP HVAC UNIT	10.0	4000	224	124	1.5	4.0	575/3/60	27.0	30.0	CARRIER 48PC12 LENNOX KGB120H TRANE YHC120	MED HEAT, DOWN DISCHARGE & RETURN, AIRFOIL SUPPLY FAN, POWER EXHAUST, MERV 12 FILTERS, 8" HIGH VIB. ISOLATION RAIL, & 24" CURB. PROVIDE W/ REFRIGERANT LEAK DETECTION SYSTEM.
HVAC-2	PACKAGED ROOFTOP HVAC UNIT	7.5	3000	180	93.4	1.5	3.0	575/3/60	20.0	25.0	CARRIER 48P008 LENNOX KGB092H TRANE YHC092	MED HEAT, DOWN DISCHARGE & RETURN, AIRFOIL SUPPLY FAN, POWER EXHAUST, MERV 12 FILTERS, 8" HIGH VIB. ISOLATION RAIL, & 24" CURB. PROVIDE W/ REFRIGERANT LEAK DETECTION SYSTEM.
HVAC-3	PACKAGED ROOFTOP HVAC UNIT	7.5	3000	180	93.4	1.5	3.0	575/3/60	20.0	25.0	CARRIER 48P008 LENNOX KGB092H TRANE YHC092	MED HEAT, DOWN DISCHARGE & RETURN, AIRFOIL SUPPLY FAN, POWER EXHAUST, MERV 12 FILTERS, 8" HIGH VIB. ISOLATION RAIL, & 24" CURB. PROVIDE W/ REFRIGERANT LEAK DETECTION SYSTEM.
HVAC-4	PACKAGED ROOFTOP HVAC UNIT	7.5	3000	180	93.4	1.5	3.0	575/3/60	20.0	25.0	CARRIER 48P008 LENNOX KGB092H TRANE YHC092	MED HEAT, DOWN DISCHARGE & RETURN, AIRFOIL SUPPLY FAN, POWER EXHAUST, MERV 12 FILTERS, 8" HIGH VIB. ISOLATION RAIL, & 24" CURB. PROVIDE W/ REFRIGERANT LEAK DETECTION SYSTEM.
HVAC-5	PACKAGED ROOFTOP HVAC UNIT	6.0	2400	110	76.4	1.5	3.0	575/3/60	12.0	15	CARRIER 48P007 LENNOX KGB072H TRANE YHC072	MED HEAT, DOWN DISCHARGE & RETURN, AIRFOIL SUPPLY FAN, MERV 12 FILTERS, 8" HIGH VIB. ISOLATION RAIL, & 24" CURB. PROVIDE W/ REFRIGERANT LEAK DETECTION SYSTEM.
HVAC-6	PACKAGED ROOFTOP HVAC UNIT	7.5	3000	180	93.4	1.5	3.0	575/3/60	20.0	25.0	CARRIER 48P008 LENNOX KGB092H TRANE YHC092	MED HEAT, DOWN DISCHARGE & RETURN, AIRFOIL SUPPLY FAN, POWER EXHAUST, MERV 12 FILTERS, 8" HIGH VIB. ISOLATION RAIL, & 24" CURB. PROVIDE W/ REFRIGERANT LEAK DETECTION SYSTEM.
HVAC-7	PACKAGED ROOFTOP HVAC UNIT	4.0	1600	110	52.3	1.5	2.0	575/3/60	11.0	15	CARRIER 48P005 LENNOX KGB045H TRANE YHC048	MED HEAT, DOWN DISCHARGE & RETURN, AIRFOIL SUPPLY FAN, POWER EXHAUST, MERV 12 FILTERS, 8" HIGH VIB. ISOLATION RAIL, & 24" CURB. PROVIDE W/ REFRIGERANT LEAK DETECTION SYSTEM.
GENERAL PACKAGED HVAC UNIT SCHEDULE NOTES:												
1. ACCEPTABLE MANUFACTURERS: CARRIER, LENNOX, TRANE.												
2. UNITS HAVE 2 STAGE NATURAL GAS/PROPANE HEAT, 2 STAGE DX COOLING PLUS ECONOMIZER (1 STAGE ON SMALLER UNITS), BELT DRIVE FANS, VFD FAN MOTOR CONTROL, COMMISSION LOW SPEED TO 5Hz.												
3. PROVIDE STANDARD INSULATED 20" HIGH ROOF CURB, ADDITIONAL ISOLATION/VIBRATION RAIL/CURB, STAINLESS STEEL GAS HEAT EXCHANGER, CONDENSER COIL GUARD, STAINLESS STEEL FLUE GAS EXTENSION, POWER EXHAUST ON UNITS 7.5 TONS AND LARGER, ECONOMIZER, AND ALL ROOFS & INLET SCREENS, DEHUMIDIFICATION PACKAGE WHERE INDICATED, AND 2 SETS MERV 8 DISPOSABLE FILTERS AND REGENERATION LEAK DETECTION SYSTEM.												
4. OWNERS: SYSTEM CHARGE BY LEAD CONTRACTOR, PROVIDE INTEGRAL CONTROLLER MATCHED TO BAS MANUFACTURER.												
5. CONTROLS: 7-DAY PROGRAMMABLE THERMOSTAT AND LOCKING COVER.												

SPLIT AIR CONDITIONING UNIT SCHEDULE												CAPACITY INDICATED ON SCHEDULE REFER TO SPECIFICATION FOR CONSTRUCTION STANDARDS, ACCESSORIES AND ADDITIONAL INFORMATION.
Item	Type	Capacity tons	Cooling Capacity cfm	Medium MBH	Refrigerant Pipe Length	Max. Charge lbs	Voltage	MCA	MOCP	hp	Acceptable Manufacturer	Remarks
AC-1	INDOOR WALL MTD AC UNIT	3.0	635	36,000	R454B	225 ft	5.0	208/1/60	1	15	— MITSUBISHI PKA-A36KA	CONNECT TO CU-1, MAXIMUM SYSTEM CHARGE OF 5LBS.
CU-1	OUTDOOR CONDENSING UNIT	3.0	—	36,000	R454B	225 ft	5.0	208/1/60	25	40	— MITSUBISHI PUH-SU470	PROVIDE POWER FOR AC-1 UNIT THROUGH CU-1, PROVIDE BAS CONTROL MODULE, FACTORY INSTALLED LOW AMBIENT OPTION AND THERMOSTAT, MAXIMUM SYSTEM CHARGE OF 5LBS.

EXPANSION TANK SCHEDULE										CAPACITY INDICATED ON SCHEDULE REFER TO SPECIFICATION FOR CONSTRUCTION STANDARDS, ACCESSORIES AND ADDITIONAL INFORMATION.
Item	Type	Max. Working Pressure psig	Max. Working Temp. °F	Total Volume gal.	Acceptable Volume gal.	Diameter in.	Height in.	System Connection in.	Acceptable Manufacturer & Model	Remarks
ET-1	PRE-PRESSURED DAMPHAM	150	200	6.4	3.2	12	12	3/4"	ASMTROL EXTROL S-12C	SUITABLE FOR POTABLE WATER

WATER HEATER SCHEDULE							
Item	Type	Input		Water Side		Manufacturer & Model	Remarks
		Capacity	Medium	Storage Gal	Recovery GPH		
WH-1	DOMESTIC WATER HEATER	76.0 MBH	N. Gas	50	82	BRADFORD WHITE L22P50H1763N	120/1/60, fhp
WH-2	DOMESTIC WATER HEATER	76.0 MBH	N. Gas	50	82	BRADFORD WHITE L22P50H1763N	120/1/60, fhp

FAN SCHEDULE							CAPACITY INDICATED ON SCHEDULE REFER TO SPECIFICATION FOR CONSTRUCTION STANDARDS, ACCESSORIES AND ADDITIONAL INFORMATION.		
Item	Type	Capacity cfm	ESP in wc	Fan Speed rpm	Motor hp	Voltage	Acceptable Manufacturer	Description	
EF-1	ROOFTOP EXHAUST FAN	700	0.5	820	Fhp	120/1/60	GREENHECK GB-100	SPUN ALUMINUM MOTOR COVER & FAN SHROUD, DOWN DISCHARGE, W/BELT DRIVE CENTRIFUGAL BACKWARD INCLINED FAN, GALV BRD SCREEN, 24" HIGH INSULATED ROOF CURB, & BACKDRAFT DAMPER.	
EF-2	ROOFTOP EXHAUST FAN	600	0.5	710	Fhp	120/1/60	GREENHECK GB-100	SPUN ALUMINUM MOTOR COVER & FAN SHROUD, DOWN DISCHARGE, W/BELT DRIVE CENTRIFUGAL BACKWARD INCLINED FAN, GALV BRD SCREEN, 24" HIGH INSULATED ROOF CURB, & BACKDRAFT DAMPER.	
EF-3	ROOFTOP EXHAUST FAN	450	0.5	710	Fhp	120/1/60	GREENHECK GB-090	SPUN ALUMINUM MOTOR COVER & FAN SHROUD, DOWN DISCHARGE, W/BELT DRIVE CENTRIFUGAL BACKWARD INCLINED FAN, GALV BRD SCREEN, 24" HIGH INSULATED ROOF CURB, & BACKDRAFT DAMPER.	
EF-4	SIDEWALL EXHAUST FAN	500	0.2	1050	1/20	120/1/60	GREENHECK SE1-14	STEEL PANEL FRAME/HOUSING, STEEL FABRICATED PROPELLER BLADES, DIRECT DRIVE AXIAL FAN, C/W BACKDRAFT DAMPER, WALL COLLAR, MOTOR-SIDE GUARD	
EF-5	SIDEWALL EXHAUST FAN	300	0.15	1050	1/20	120/1/60	GREENHECK SE1-12	STEEL PANEL FRAME/HOUSING, STEEL FABRICATED PROPELLER BLADES, DIRECT DRIVE AXIAL FAN, C/W BACKDRAFT DAMPER, WALL COLLAR, MOTOR-SIDE GUARD	
GENERAL FAN SCHEDULE NOTES:									
1. ACCEPTABLE MANUFACTURERS: GREENHECK, PENN-BARRY, COOK, CARNES, ACME, TWIN CITY, JENCO, BUFFALO. (CEILING FANS: BROWN, GREENHECK, ZONEK)									
2. PROVIDE 24" TALL PREFABRICATED, INSULATED ROOF CURB FOR ALL ROOF MOUNTED FANS.									

DUCT HEATER SCHEDULE							CAPACITY INDICATED ON SCHEDULE. REFER TO SPECIFICATION FOR CONSTRUCTION STANDARDS, ACCESSORIES AND ADDITIONAL INFORMATION.)
Mark	Type	Size Width	Height	CFM	HEATING CAPACITY (kW)	Electrical	Acceptable Manufacturer
DH-1	ELECTRIC DUCT HEATER	250	250	500	5.0	208/1/60	THERMOLEC
							C/W ACCESS PANEL, AUTOMATIC RESET THERMAL CUT-OUT, DUCT 1 STAT, 24V CONTROL. INTERLOCK WITH AHU EXTERNAL HEAT CONTROLLER.

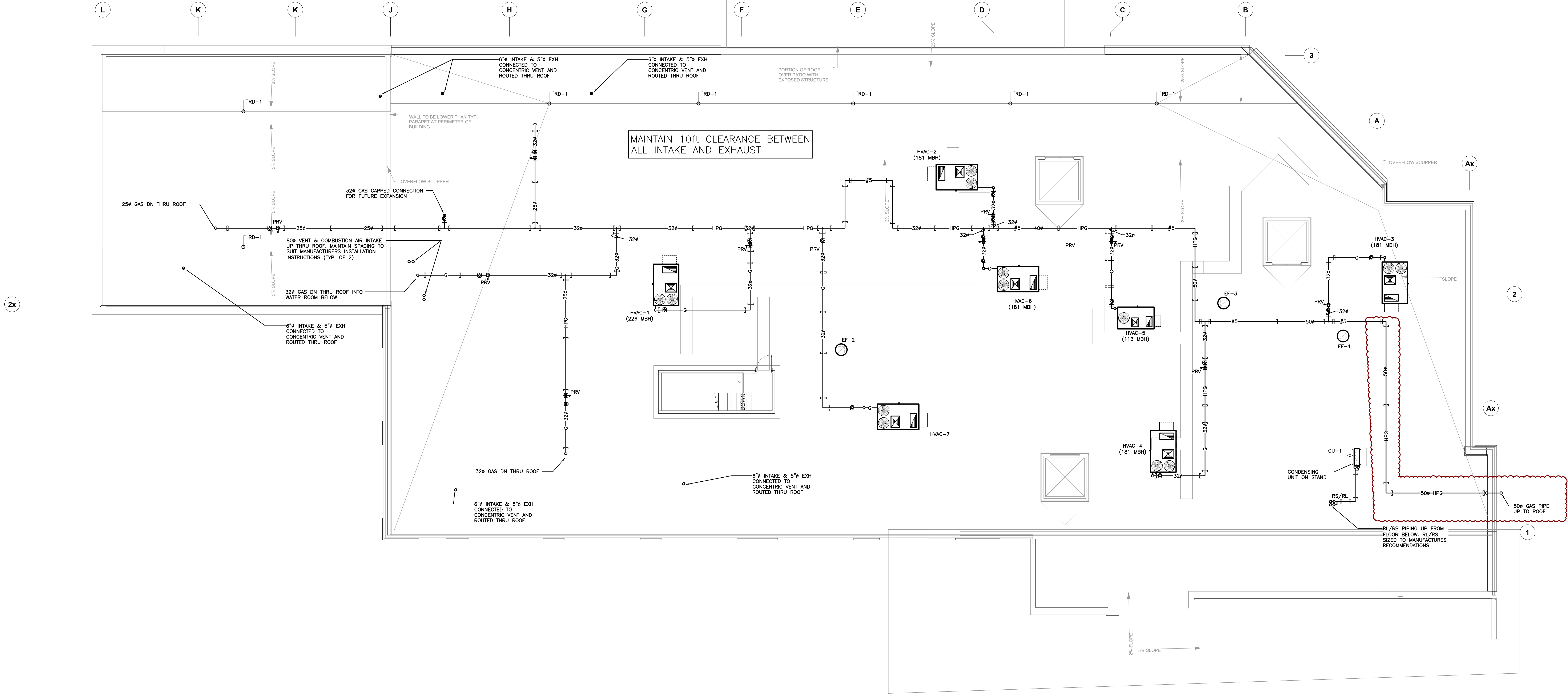
PUMP SCHEDULE							CAPACITY INDICATED ON SCHEDULE REFER TO SPECIFICATION FOR CONSTRUCTION STANDARDS, ACCESSORIES AND ADDITIONAL INFORMATION.
Item	Type	Capacity USgpm	Head ft	Size hp	Speed rpm	Manufacturer & Model	Remarks
RP-1	RECIRC. INLINE PUMP	15	30	Fhp	2875	BELL & GOSSETT EDOCOR XL-36-45	208V/1ph/60Hz, SUITABLE FOR POTABLE WATER USE. C/W BUILT IN SPEED CONTROL. OPERATE IN CONSTANT PRESSURE MODE.

VLT CONTROL DAMPER SCHEDULE											CAPACITY INDICATED ON SCHEDULE REFER TO SPECIFICATION FOR CONSTRUCTION STANDARDS, ACCESSORIES AND ADDITIONAL INFORMATION.	
Item	Type	Airflow Capacity						Size		Acceptable Manufacturer & Model	Remarks	
		Design (cfm)	Min. Vent (cfm)	Heating		Cooling		Neck (in)	Box (in)			
WT-1.0	BYPASS								550X350		BYPASS MOTORIZED DAMPER	
WT-1.1	SINGLE TERMINAL CONTROL BOX	500	200	300	400	150	650	10	12	KRUGER: LMHS-LC EH PRICE: SDV-05	C/W 36" ATTENUATOR, 2 ROW COIL, & 2 ACCESS DOORS C/W CAM LATCHES.	
WT-3.0	BYPASS	2625							550X350		BYPASS MOTORIZED DAMPER	
WT-3.1	SINGLE TERMINAL CONTROL BOX	300	120	180	240	90	390	8	10	KRUGER: LMHS-LC EH PRICE: SDV-05	C/W 36" ATTENUATOR, 2 ROW COIL, & 2 ACCESS DOORS C/W CAM LATCHES.	
WT-3.2	SINGLE TERMINAL CONTROL BOX	250	100	150	200	75	325	8	10	KRUGER: LMHS-LC EH PRICE: SDV-05	C/W 36" ATTENUATOR, 2 ROW COIL, & 2 ACCESS DOORS C/W CAM LATCHES.	
WT-3.3	SINGLE TERMINAL CONTROL BOX	425	170	255	340	128	553	10	12	KRUGER: LMHS-LC EH PRICE: SDV-05	C/W 36" ATTENUATOR, 2 ROW COIL, & 2 ACCESS DOORS C/W CAM LATCHES.	
WT-3.4	SINGLE TERMINAL CONTROL BOX	325	130	195	260	98	423	8	10	KRUGER: LMHS-LC EH PRICE: SDV-05	C/W 36" ATTENUATOR, 2 ROW COIL, & 2 ACCESS DOORS C/W CAM LATCHES.	
WT-3.5	SINGLE TERMINAL CONTROL BOX	250	100	150	200	75	325	8	10	KRUGER: LMHS-LC EH PRICE: SDV-05	C/W 36" ATTENUATOR, 2 ROW COIL, & 2 ACCESS DOORS C/W CAM LATCHES.	
WT-3.6	SINGLE TERMINAL CONTROL BOX	575	230	345	460	173	748	10	12	KRUGER: LMHS-LC EH PRICE: SDV-05	C/W 36" ATTENUATOR, 2 ROW COIL, & 2 ACCESS DOORS C/W CAM LATCHES.	
WT-3.7	SINGLE TERMINAL CONTROL BOX	500	200	300	400	150	650	10	12	KRUGER: LMHS-LC EH PRICE: SDV-05	C/W 36" ATTENUATOR, 2 ROW COIL, & 2 ACCESS DOORS C/W CAM LATCHES.	
WT-4.0	BYPASS	1950							550X350		BYPASS MOTORIZED DAMPER	
WT-4.1	SINGLE TERMINAL CONTROL BOX	450	180	270	360	135	585	10	12	KRUGER: LMHS-LC EH PRICE: SDV-05	C/W 36" ATTENUATOR, 2 ROW COIL, & 2 ACCESS DOORS C/W CAM LATCHES.	
WT-4.2	SINGLE TERMINAL CONTROL BOX	600	240	360	480	180	780	10	12	KRUGER: LMHS-LC EH PRICE: SDV-05	C/W 36" ATTENUATOR, 2 ROW COIL, & 2 ACCESS DOORS C/W CAM LATCHES.	
WT-4.3	SINGLE TERMINAL CONTROL BOX	600	240	360	480	180	780	10	12	KRUGER: LMHS-LC EH PRICE: SDV-05	C/W 36" ATTENUATOR, 2 ROW COIL, & 2 ACCESS DOORS C/W CAM LATCHES.	
WT-4.4	SINGLE TERMINAL CONTROL BOX	300	120	180	240	90	390	8	10	KRUGER: LMHS-LC EH PRICE: SDV-05	C/W 36" ATTENUATOR, 2 ROW COIL, & 2 ACCESS DOORS C/W CAM LATCHES.	
WT-5.0	BYPASS	1000							550X350		BYPASS MOTORIZED DAMPER	
WT-5.1	SINGLE TERMINAL CONTROL BOX	500	200	300	400	150	650	10	12	KRUGER: LMHS-LC EH PRICE: SDV-05	C/W 36" ATTENUATOR, 2 ROW COIL, & 2 ACCESS DOORS C/W CAM LATCHES.	
WT-5.2	SINGLE TERMINAL CONTROL BOX	250	100	150	200	75	325	8	10	KRUGER: LMHS-LC EH PRICE: SDV-05	C/W 36" ATTENUATOR, 2 ROW COIL, & 2 ACCESS DOORS C/W CAM LATCHES.	
WT-5.3	SINGLE TERMINAL CONTROL BOX	250	100	150	200	75	325	8	10	KRUGER: LMHS-LC EH PRICE: SDV-05	C/W 36" ATTENUATOR, 2 ROW COIL, & 2 ACCESS DOORS C/W CAM LATCHES.	
WT-7.0	BYPASS	1350							550X350		BYPASS MOTORIZED DAMPER	
WT-7.1	SINGLE TERMINAL CONTROL BOX	500	200	300	400	150	650	10	12	KRUGER: LMHS-LC EH PRICE: SDV-05	C/W 36" ATTENUATOR, 2 ROW COIL, & 2 ACCESS DOORS C/W CAM LATCHES.	
WT-7.2	SINGLE TERMINAL CONTROL BOX	850	340	510	680	255	1105	12	14	KRUGER: LMHS-LC EH PRICE: SDV-05	C/W 36" ATTENUATOR, 2 ROW COIL, & 2 ACCESS DOORS C/W CAM LATCHES.	

GRILLE SCHEDULE					CAPACITY INDICATED ON SCHEDULE REFER TO SPECIFICATION FOR CONSTRUCTION STANDARDS, ACCESSORIES AND ADDITIONAL INFORMATION.	
Item	Type	Equilizing Grid	Volume Damper	Acceptable Manufacturer	Description	
D1	SQUARE CEILING DIFFUSER	YES	NONE	EH PRICE SCDA	MULTICONE, FULLY ADJUSTABLE, 24x24" STEEL CEILING DIFFUSER W/ROUND NECK. SUITABLE FOR LAY-IN T-BAR CEILING OR DRYWALL CEILING WHEN C/W FRAME.	
D2	ROUND DIFFUSER (EXPOSED)	YES	NONE	EH PRICE RCDA	MULTICONE, FULLY ADJUSTABLE, STEEL DIFFUSER W/ROUND NECK. SUITABLE FOR EXPOSED, HUNG INSTALLATION. PROVIDE CONZALD SWEET CHAIN FROM DIFFUSER UP INTO DUCTWORK.	
E1	EXHAUST GRILLE (DUCTED)	NO	NONE	EH PRICE 80-FA	1/2x1/2x1/2" ALUMINUM EGGRATE CORE, C/W 1 1/4" FLAT BORDER & SCREWED FASTENING FOR SURFACE MOUNTING.	
LD1	LINEAR CEILING DIFFUSER	NO	NONE	EH PRICE SDS-100, SDN	3 SLOT (1" WIDE) LINEAR DIFFUSER, EXTRUDED ALUMINUM CONSTRUCTION, 180° AIR PATTERN ADJUSTMENT, SUITABLE FOR STANDARD LAY-IN T-BAR CEILING W/MITRED END FLANGES, & INSULATED PLENUM. LENGTH AS INDICATED.	
R1	CEILING RETURN GRILLE (NON-DUCTED)	NO	NONE	EH PRICE 80-CH	1/2x1/2x1/2" ALUMINUM EGGRATE CORE, C/W CHANNEL BORDER FOR LAY-IN T-BAR OR DRYWALL CEILING INSTALLATION.	
R2	SIDEWALL RETURN GRILLE	NO	NONE	EH PRICE S30-FLA	FIXED BLADE AT 45°, 3/4" SPACING, STEEL BLADES PARALLEL TO LONG DIMENSION, C/W 1 1/4" FLAT BORDER & SCREWED FASTENING FOR SURFACE MOUNTING.	
S1	SUPPLY GRILLE	NO	NONE	EH PRICE 22-FLA	DOUBLE DEFLECTION, 3/4" SPACING, ALUMINUM AIRFOIL BLADES PARALLEL TO LONG DIMENSION, C/W 1 1/4" FLAT BORDER & SCREWED FASTENING FOR SURFACE MOUNTING.	
S2	SPIRAL DUCT SUPPLY GRILLE	NO	NONE	EH PRICE SDGE	DOUBLE DEFLECTION, 3/4" SPACING, EXTRUDED ALUMINUM AIRFOIL BLADES PARALLEL TO LONG DIMENSION, C/W 7/8" BORDER & SCREWED FASTENING FOR DUCT MOUNTING.	
GENERAL GRILLE SCHEDULE NOTES:						
1. ACCEPTABLE MANUFACTURERS: EH PRICE, NALOR, TITUS, KRUEGER, CARNES, METALARE, TUTTLE & BAILEY.						
2. GRILLE COLOURS ARE SELECTED BY ARCHITECT FROM STANDARD COLOUR CHART, UNLESS OTHERWISE NOTED.						
3. PAINT INTERIOR OF DUCTWORK BEHIND GRILLE MATTIE BLACK (WHERE VISIBLE THRU GRILLE).						

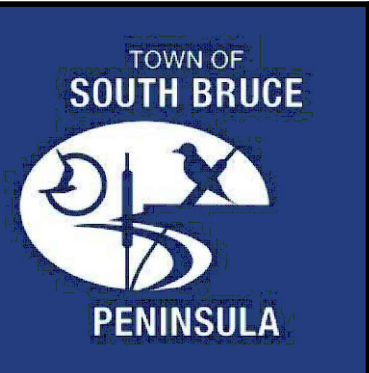
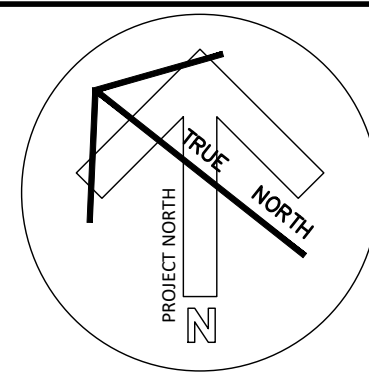
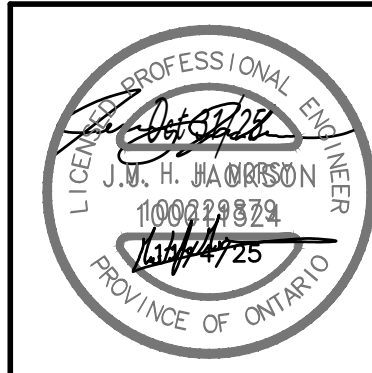
ENERGY RECOVERY UNIT SCHEDULE										CAPACITY INDICATED ON SCHEDULE REFER TO SPECIFICATION FOR CONSTRUCTION STANDARDS, ACCESSORIES AND ADDITIONAL INFORMATION.	
Item	Type	Capacity		ESP in wc	Fan Speed		Electrical Data			Acceptable Manufacturer	Remarks
		Supply cfm	Exhaust cfm		Supply rpm	Exhaust rpm	Voltage	MCA	MOCP		
ERV-1	ENERGY RECOVERY VENTILATION	500	500	0.4	—	—	120/1/60	10.5	15	ALDES E1100L-FI-N	C/W INDIVIDUAL INTAKE AND EXHAUST HOODS (MIN. 4'-0" APART), ALT. CORE, FRESH AIR AND RETURN AIR FILTERS, RE-CIRCULATION DEFROST, BAS CONTROL, BACHET MODULE.
GENERAL ENERGY RECOVERY UNIT SCHEDULE NOTES:											

UNIT HEATER SCHEDULE									
Item	Type	CFM	Input Capacity	Input Medium	Output Capacity	Electrical		Manufacturer & Model	Remarks
						HP	Voltage		
UH-1	UNIT HEATER	1537	120 MBH	N. GAS	99.6 MBH	0.25	120/1/60	REZNOR UDHC-125	SEPARATED COMBUSTION
UH-2	UNIT HEATER	1537	120 MBH	N. GAS	99.6 MBH	0.25	120/1/60	REZNOR UDHC-125	SEPARATED COMBUSTION
UH-3	UNIT HEATER	1537	120 MBH	N. GAS	99.6 MBH	0.25	120/1/60	REZNOR UDHC-125	SEPARATED COMBUSTION
UH-4	UNIT HEATER	1537	120 MBH	N. GAS	99.6 MBH	0.25	120/1/60	REZNOR UDHC-125	SEPARATED COMBUSTION
UH-5	UNIT HEATER	1537	120 MBH	N. GAS	99.6 MBH	0.25	120/1/60	REZNOR UDHC-125	SEPARATED COMBUSTION
UH-6	UNIT HEATER	1537	120 MBH	N. GAS	99.6 MBH	0.25	120/1/60	REZNOR UDHC-125	SEPARATED COMBUSTION
GENERAL UNIT HEATER NOTES:									
GAS-FIRED SEPARATED COMBUSTION c/w ELECTRONIC IGNITION, THERMOSTAT, 4 POINT SUSPENSION, EXHAUST ADAPTOR, FLUE WITH VENT CAP									
ACCEPTABLE MANUFACTURERS: REZNOR, LENNOX, TRANE									



ROOF PLAN
SCALE: 1:100

STATION
0+00



DEI
Consulting Engineers
MECHANICAL, ELECTRICAL, ACQUISITION
15 Northland Road, Windsor, Ontario N9B 1Y8
Phone: 519-378-1975
Fax: 519-378-1976
Project Number: 2404

The contractor shall verify all dimensions and report all errors and discrepancies to the Consultant before commencement of the work.
The drawings show general arrangement of services. Field to check on actual building construction and consult with owner and/or architect for any changes. These drawings are not to be used for construction without the consent of the Consultant.
Do not scale this drawing.

G. M. DIEMERT ARCHITECT INC.
Suite 201
457 Fourth Avenue East
OWEN SOUND, ONTARIO, N4K 2N6
Tel: 519-378-1975

OWNER:
Town of South Bruce Peninsula
315 George Street
Windsor, N6H 2T2

PROJECT:
New Townhall Offices
370 William Street, Windsor, Ontario

Revision History	
Rev	Change
1	ISSUED FOR ADDENDUM 02
2	ISSUED FOR ADDENDUM 03
3	ISSUED FOR ADDENDUM 04
4	ISSUED FOR TENDER
5	ISSUED FOR CONSTRUCTION
6	ISSUED FOR CONSTRUCTION
7	ISSUED FOR CONSTRUCTION
8	ISSUED FOR CONSTRUCTION
9	ISSUED FOR CONSTRUCTION
10	ISSUED FOR CONSTRUCTION
11	ISSUED FOR CONSTRUCTION
12	ISSUED FOR CONSTRUCTION
13	ISSUED FOR CONSTRUCTION
14	ISSUED FOR CONSTRUCTION
15	ISSUED FOR CONSTRUCTION
16	ISSUED FOR CONSTRUCTION
17	ISSUED FOR CONSTRUCTION
18	ISSUED FOR CONSTRUCTION
19	ISSUED FOR CONSTRUCTION
20	ISSUED FOR CONSTRUCTION
21	ISSUED FOR CONSTRUCTION
22	ISSUED FOR CONSTRUCTION
23	ISSUED FOR CONSTRUCTION
24	ISSUED FOR CONSTRUCTION
25	ISSUED FOR CONSTRUCTION
26	ISSUED FOR CONSTRUCTION
27	ISSUED FOR CONSTRUCTION
28	ISSUED FOR CONSTRUCTION
29	ISSUED FOR CONSTRUCTION
30	ISSUED FOR CONSTRUCTION
31	ISSUED FOR CONSTRUCTION
32	ISSUED FOR CONSTRUCTION
33	ISSUED FOR CONSTRUCTION
34	ISSUED FOR CONSTRUCTION
35	ISSUED FOR CONSTRUCTION
36	ISSUED FOR CONSTRUCTION
37	ISSUED FOR CONSTRUCTION
38	ISSUED FOR CONSTRUCTION
39	ISSUED FOR CONSTRUCTION
40	ISSUED FOR CONSTRUCTION
41	ISSUED FOR CONSTRUCTION
42	ISSUED FOR CONSTRUCTION
43	ISSUED FOR CONSTRUCTION
44	ISSUED FOR CONSTRUCTION
45	ISSUED FOR CONSTRUCTION
46	ISSUED FOR CONSTRUCTION
47	ISSUED FOR CONSTRUCTION
48	ISSUED FOR CONSTRUCTION
49	ISSUED FOR CONSTRUCTION
50	ISSUED FOR CONSTRUCTION
51	ISSUED FOR CONSTRUCTION
52	ISSUED FOR CONSTRUCTION
53	ISSUED FOR CONSTRUCTION
54	ISSUED FOR CONSTRUCTION
55	ISSUED FOR CONSTRUCTION
56	ISSUED FOR CONSTRUCTION
57	ISSUED FOR CONSTRUCTION
58	ISSUED FOR CONSTRUCTION
59	ISSUED FOR CONSTRUCTION
60	ISSUED FOR CONSTRUCTION
61	ISSUED FOR CONSTRUCTION
62	ISSUED FOR CONSTRUCTION
63	ISSUED FOR CONSTRUCTION
64	ISSUED FOR CONSTRUCTION
65	ISSUED FOR CONSTRUCTION
66	ISSUED FOR CONSTRUCTION
67	ISSUED FOR CONSTRUCTION
68	ISSUED FOR CONSTRUCTION
69	ISSUED FOR CONSTRUCTION
70	ISSUED FOR CONSTRUCTION
71	ISSUED FOR CONSTRUCTION
72	ISSUED FOR CONSTRUCTION
73	ISSUED FOR CONSTRUCTION
74	ISSUED FOR CONSTRUCTION
75	ISSUED FOR CONSTRUCTION
76	ISSUED FOR CONSTRUCTION
77	ISSUED FOR CONSTRUCTION
78	ISSUED FOR CONSTRUCTION
79	ISSUED FOR CONSTRUCTION
80	ISSUED FOR CONSTRUCTION
81	ISSUED FOR CONSTRUCTION
82	ISSUED FOR CONSTRUCTION
83	ISSUED FOR CONSTRUCTION
84	ISSUED FOR CONSTRUCTION
85	ISSUED FOR CONSTRUCTION
86	ISSUED FOR CONSTRUCTION
87	ISSUED FOR CONSTRUCTION
88	ISSUED FOR CONSTRUCTION
89	ISSUED FOR CONSTRUCTION
90	ISSUED FOR CONSTRUCTION
91	ISSUED FOR CONSTRUCTION
92	ISSUED FOR CONSTRUCTION
93	ISSUED FOR CONSTRUCTION
94	ISSUED FOR CONSTRUCTION
95	ISSUED FOR CONSTRUCTION
96	ISSUED FOR CONSTRUCTION
97	ISSUED FOR CONSTRUCTION
98	ISSUED FOR CONSTRUCTION
99	ISSUED FOR CONSTRUCTION
100	ISSUED FOR CONSTRUCTION