

3 FIRST FLOOR  
E3101 Scale: 1' : 50'

NOTES:

1. PROVIDE LIGHTS AS INDICATED ON PLAN. REFER TO LUMINAIRE SCHEDULE FOR DETAILS.
2. REFER TO LIGHTING CONTROLS OPERATIONS IN SPECIFICATION. ALL CONTROLS WITH FIXTURES INDICATED ANTI LIGATURE TO ALSO BE ANTI LIGATURE.
3. INTERLOCK BATHROOM EXHAUST CONTROLS WITH LIGHTING OCCUPANCY SENSOR. REFER TO MECHANICAL DRAWINGS FOR MORE DETAILS.
4. DUE TO HIGHLY CONGESTED CEILING, ESPECIALLY IN THE CORRIDOR AREAS, CONTRACTOR TO COORDINATE WITH MECHANICAL TRADE REGARDING ANY POTENTIAL INTERFERENCES PRIOR TO ANY INSTALLATION OF CONDUIT/MECHANICAL PIPING.
5. LIGHTS WITH HATCHING ARE FED FROM EMERGENCY CIRCUITS FED BY GENERATOR.
6. WHERE ONLY ONE CIRCUIT IS SHOWN IN ROOM, ALL NORMAL LIGHTS ARE FED ON THAT CIRCUIT. EMERGENCY LIGHTING CIRCUITS ARE INDICATED SEPARATELY.
7. EMERGENCY AND NORMAL CIRCUITS ARE CONTROLLED FROM SAME SWITCH, WITH EMERGENCY RELAY TO BRING EMERGENCY LIGHTS UP TO 100% DURING POWER FAILURE

**COPYRIGHT**  
This drawing has been prepared solely for the intended use, thus any reproduction or distribution for any purpose other than authorized by Arcadis is prohibited. Written dimensions shall have precedence over scaled dimensions. Contractors shall verify and be responsible for all dimensions and conditions on the job, and Arcadis shall be informed of any variations from the dimensions and conditions shown on the drawing. Shop drawings shall be submitted by Arcadis for general conformance before proceeding with fabrication.

Arcadis Professional Services (Canada) Inc.

ISSUES

No.	DESCRIPTION	DATE
A	PERMIT	2025-08-11
B	TENDER	2025-09-02
C	ADDENDUM 4	2025-09-25
D	ADDENDUM 5	2025-09-30

CONSULTANTS

SEAL

PRIME CONSULTANT



175 Galaxy Blvd,  
Toronto, ON M9W 0C9, Canada  
tel 416 679 1930  
www.arcadis.com

PROJECT TITLE  
**CITY OF TORONTO  
ACCESSIBILITY UPGRADES**

PROJECT ADDRESS  
**50 RICHMOND ST. E.  
RENOVATIONS  
50 RICHMOND STREET EAST  
TORONTO, ONTARIO**

PROJECT NO:  
9119-19-0162 / 30286113

DRAWN BY:  
**M. BOJIC**

CHECKED BY:  
**F. RASTI**

PROJECT MGR:  
**F. BOULORIAN**

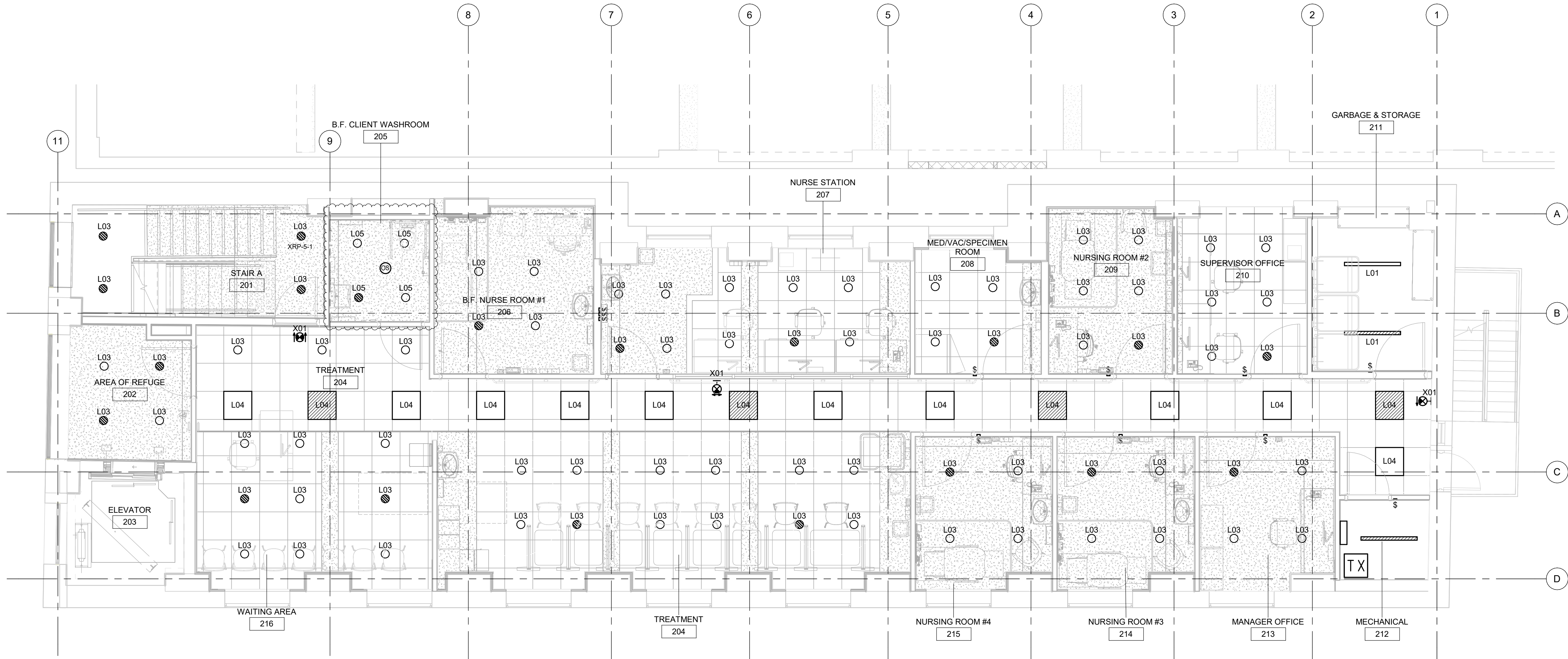
APPROVED BY:  
**F. RASTI**

SHEET TITLE  
**ELECTRICAL LIGHTING  
PLAN 1ST FLOOR**

SHEET NUMBER  
**E3101**

ISSUE  
**D**





1 SECOND FLOOR  
E3102 Scale: 1 : 50

- NOTES:
1. PROVIDE LIGHTS AS INDICATED ON PLAN. REFER TO LUMINAIRE SCHEDULE FOR DETAILS.
  2. REFER TO LIGHTING CONTROLS OPERATIONS IN SPECIFICATION. ALL CONTROLS AND FIXTURES IN CLIENT WASHROOMS TO BE ANTI LIGATURE.
  3. INTERLOCK BATHROOM EXHAUST CONTROLS WITH LIGHTING OCCUPANCY SENSOR. REFER TO MECHANICAL DRAWINGS FOR MORE DETAILS.
  4. DUE TO HIGHLY CONGESTED CEILING, ESPECIALLY IN THE CORRIDOR AREAS, CONTRACTOR TO COORDINATE WITH MECHANICAL TRADE REGARDING ANY POTENTIAL INTERFERENCES PRIOR TO ANY INSTALLATION OF CONDUIT/MECHANICAL PIPING.
  5. LIGHTS WITH HATCHING ARE FED FROM EMERGENCY CIRCUITS FED BY GENERATOR.
  6. WHERE ONLY ONE CIRCUIT IS SHOWN IN ROOM, ALL NORMAL LIGHTS ARE FED ON THAT CIRCUIT. EMERGENCY LIGHTING CIRCUITS ARE INDICATED SEPARATELY.
  7. EMERGENCY AND NORMAL CIRCUITS ARE CONTROLLED FROM SAME SWITCH, WITH EMERGENCY RELAY TO BRING EMERGENCY LIGHTS UP TO 100% DURING POWER FAILURE

CLIENT  
**CITY OF TORONTO**  
Corporate Real Estate Management  
Project Management Office  
Metro Hall Toronto, ON  
M5V 3C6

**COPYRIGHT**  
This drawing has been prepared solely for the intended use, thus any reproduction or distribution for any purpose other than authorized by Arcadis is forbidden. Written dimensions shall have precedence over scaled dimensions. Contractors shall verify and be responsible for all dimensions and conditions on the job, and Arcadis shall be informed of any variations from the dimensions and conditions shown on the drawing. Shop drawings shall be submitted by Arcadis for general conformance before proceeding with fabrication.  
**Arcadis Professional Services (Canada) Inc.**

ISSUES		
No.	DESCRIPTION	DATE
A	PERMIT	2025-08-11
B	TENDER	2025-09-02
C	ADDENDUM 4	2025-09-25
D	ADDENDUM 5	2025-09-30

CONSULTANTS

SEAL

PRIME CONSULTANT

**ARCADIS**  
  
175 Galaxy Blvd,  
Toronto, ON M9W 0C9, Canada  
tel 416 679 1930  
www.arcadis.com

PROJECT TITLE  
**CITY OF TORONTO  
ACCESSIBILITY UPGRADES**

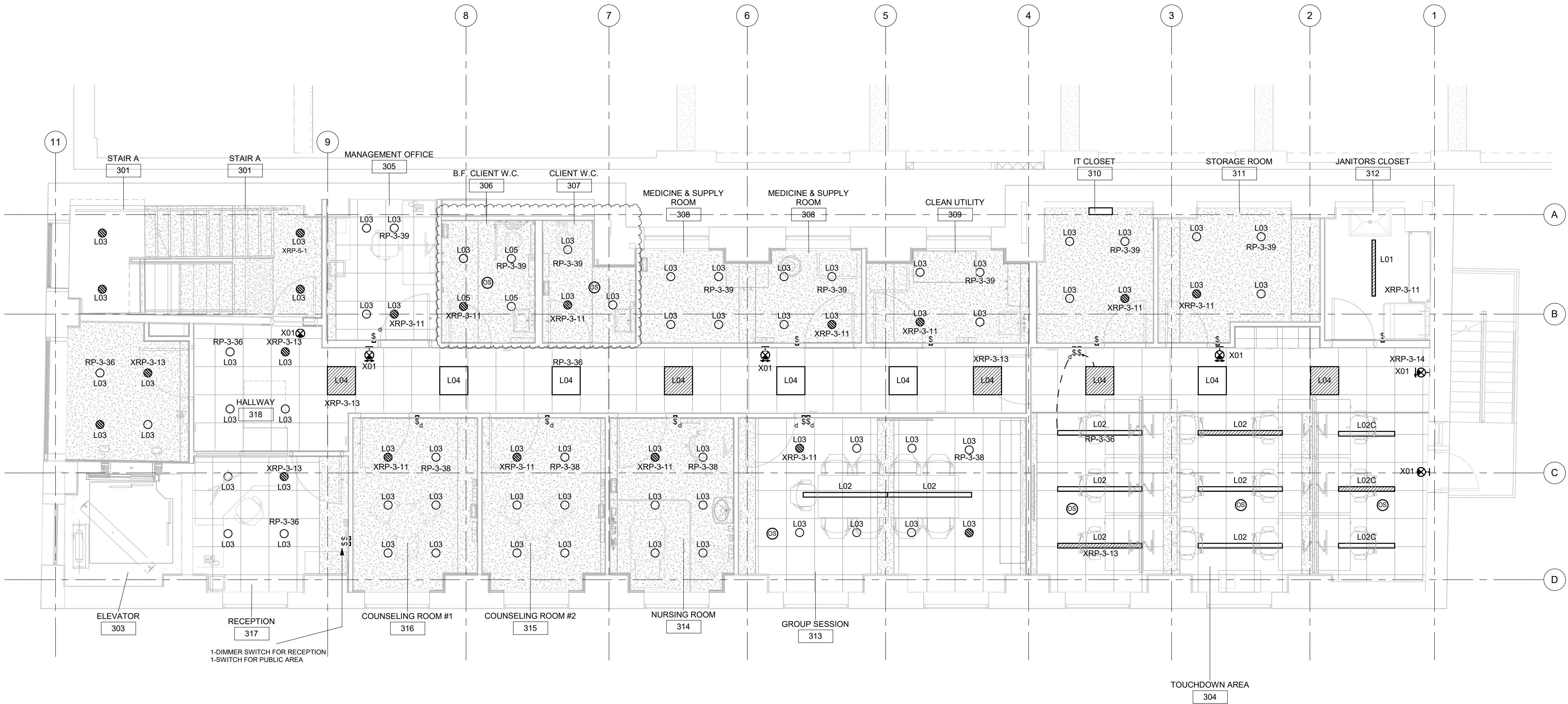
PROJECT ADDRESS  
**50 RICHMOND ST. E.  
RENOVATIONS  
50 RICHMOND STREET EAST  
TORONTO, ONTARIO**

PROJECT NO:  
9119-19-0162 / 30286113  
DRAWN BY:  
**M.BOJIC**  
PROJECT MGR:  
**F. BOULORIAN**  
CHECKED BY:  
**F. RASTI**  
APPROVED BY:  
**F. RASTI**

SHEET TITLE  
**ELECTRICAL LIGHTING  
PLAN 2ND FLOOR**

SHEET NUMBER	ISSUE
<b>E3102</b>	<b>D</b>





1 THIRD FLOOR CEILING PLAN  
E3103 Scale: 1 : 50

NOTES:

1. PROVIDE LIGHTS AS INDICATED ON PLAN. REFER TO LUMINAIRE SCHEDULE FOR DETAILS.
2. REFER TO LIGHTING CONTROLS OPERATIONS IN SPECIFICATION. IN LOCATIONS WITH ANTI LIGATURE FIXTURES, ALL CONTROLS ARE TO BE RATED ANTI LIGATURE.
3. INTERLOCK BATHROOM EXHAUST CONTROLS WITH LIGHTING OCCUPANCY SENSOR. REFER TO MECHANICAL DRAWINGS FOR MORE DETAILS.
4. DUE TO HIGHLY CONGESTED CEILING, ESPECIALLY IN THE CORRIDOR AREAS, CONTRACTOR TO COORDINATE WITH MECHANICAL TRADE REGARDING ANY POTENTIAL INTERFERENCES PRIOR TO ANY INSTALLATION OF CONDUIT/MECHANICAL PIPING.
5. LIGHTS WITH HATCHING ARE FED FROM EMERGENCY CIRCUITS FED BY GENERATOR.
6. WHERE ONLY ONE CIRCUIT IS SHOWN IN ROOM, ALL NORMAL LIGHTS ARE FED ON THAT CIRCUIT. EMERGENCY LIGHTING CIRCUITS ARE INDICATED SEPARATELY.
7. EMERGENCY AND NORMAL CIRCUITS ARE CONTROLLED FROM SAME SWITCH, WITH EMERGENCY RELAY TO BRING EMERGENCY LIGHTS UP TO 100% DURING POWER FAILURE

**COPYRIGHT**  
This drawing has been prepared solely for the intended use, thus any reproduction or distribution for any purpose other than authorized by Arcadis is prohibited. Written dimensions shall have precedence over scaled dimensions. Contractors shall verify and be responsible for all dimensions and conditions on the job, and Arcadis shall be informed of any variations from the dimensions and conditions shown on the drawing. Shop drawings shall be submitted by Arcadis for general conformance before proceeding with fabrication.

Arcadis Professional Services (Canada) Inc.

ISSUES		
No.	DESCRIPTION	DATE
A	PERMIT	2025-08-11
B	TENDER	2025-09-02
C	ADDENDUM 4	2025-09-25
D	ADDENDUM 5	2025-09-30

CONSULTANTS

SEAL

PRIME CONSULTANT



175 Galaxy Blvd,  
Toronto, ON M9W 0C9, Canada  
tel 416 679 1930  
www.arcadis.com

PROJECT TITLE  
**CITY OF TORONTO  
ACCESSIBILITY UPGRADES**

PROJECT ADDRESS  
**50 RICHMOND ST. E.  
RENOVATIONS  
50 RICHMOND STREET EAST  
TORONTO, ONTARIO**

PROJECT NO:  
9119-19-0162 / 30286113

DRAWN BY:  
**M. BOJIC**

CHECKED BY:  
**F. RASTI**

PROJECT MGR:  
**F. BOULORIAN**

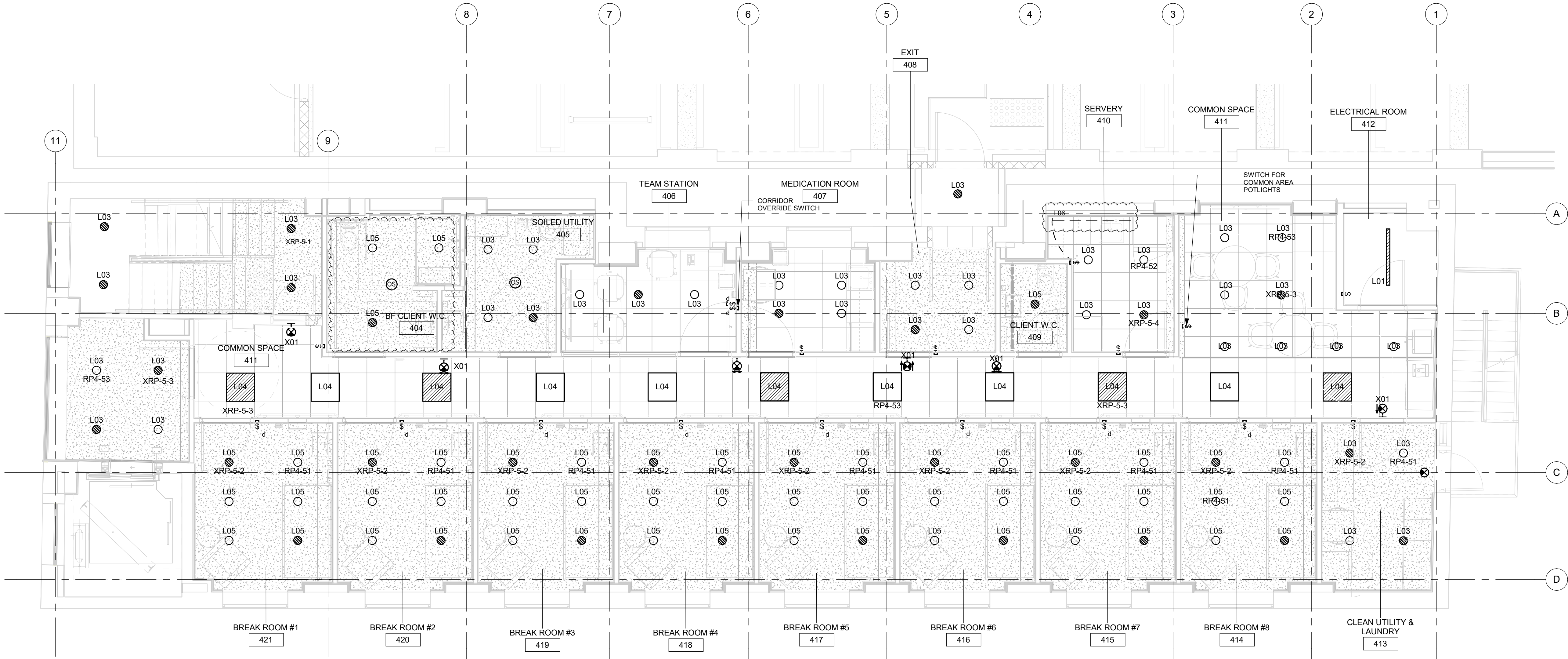
APPROVED BY:  
**F. RASTI**

SHEET TITLE  
**ELECTRICAL LIGHTING  
PLAN 3RD FLOOR**

SHEET NUMBER  
**E3103**

ISSUE  
**D**





1 FOURTH FLOOR  
E3104 Scale: 1 : 50

- NOTES:
1. PROVIDE LIGHTS AS INDICATED ON PLAN. REFER TO LUMINAIRE SCHEDULE FOR DETAILS.
  2. REFER TO LIGHTING CONTROLS OPERATIONS IN SPECIFICATION. ALL CONTROL FIXTURES IN COMMON AREAS, BREAK ROOMS AND WASHROOMS ON THIS FLOOR TO BE ANTI LIGATURE
  3. INTERLOCK BATHROOM EXHAUST CONTROLS WITH LIGHTING OCCUPANCY SENSOR. REFER TO MECHANICAL DRAWINGS FOR MORE DETAILS.
  4. DUE TO HIGHLY CONGESTED CEILING, ESPECIALLY IN THE CORRIDOR AREAS, CONTRACTOR TO COORDINATE WITH MECHANICAL TRADE REGARDING ANY POTENTIAL INTERFERENCES PRIOR TO ANY INSTALLATION OF CONDUIT/MECHANICAL PIPING.
  5. LIGHTS WITH HATCHING ARE FED FROM EMERGENCY CIRCUITS FED BY GENERATOR.
  6. WHERE ONLY ONE CIRCUIT IS SHOWN IN ROOM, ALL NORMAL LIGHTS ARE FED ON THAT CIRCUIT. EMERGENCY LIGHTING CIRCUITS ARE INDICATED SEPARATELY.
  7. EMERGENCY AND NORMAL CIRCUITS ARE CONTROLLED FROM SAME SWITCH, WITH EMERGENCY RELAY TO BRING EMERGENCY LIGHTS UP TO 100% DURING POWER FAILURE

CLIENT  
**CITY OF TORONTO**  
Corporate Real Estate Management  
Project Management Office  
Metro Hall Toronto, ON  
M5V 3C6

**COPYRIGHT**  
This drawing has been prepared solely for the intended use, thus any reproduction or distribution for any purpose other than authorized by Arcadis is forbidden. Written dimensions shall have precedence over scaled dimensions. Contractors shall verify and be responsible for all dimensions and conditions on the job, and Arcadis shall be informed of any variations from the dimensions and conditions shown on the drawing. Shop drawings shall be submitted by Arcadis for general conformance before proceeding with fabrication.

ISSUES		
No.	DESCRIPTION	DATE
A	PERMIT	2025-08-11
B	TENDER	2025-09-02
C	ADDENDUM 4	2025-09-25
D	ADDENDUM 5	2025-09-30

CONSULTANTS

SEAL

PRIME CONSULTANT  
**ARCADIS**  
175 Galaxy Blvd,  
Toronto, ON M9W 0C9, Canada  
tel 416 679 1930  
www.arcadis.com

PROJECT TITLE  
**CITY OF TORONTO  
ACCESSIBILITY UPGRADES**

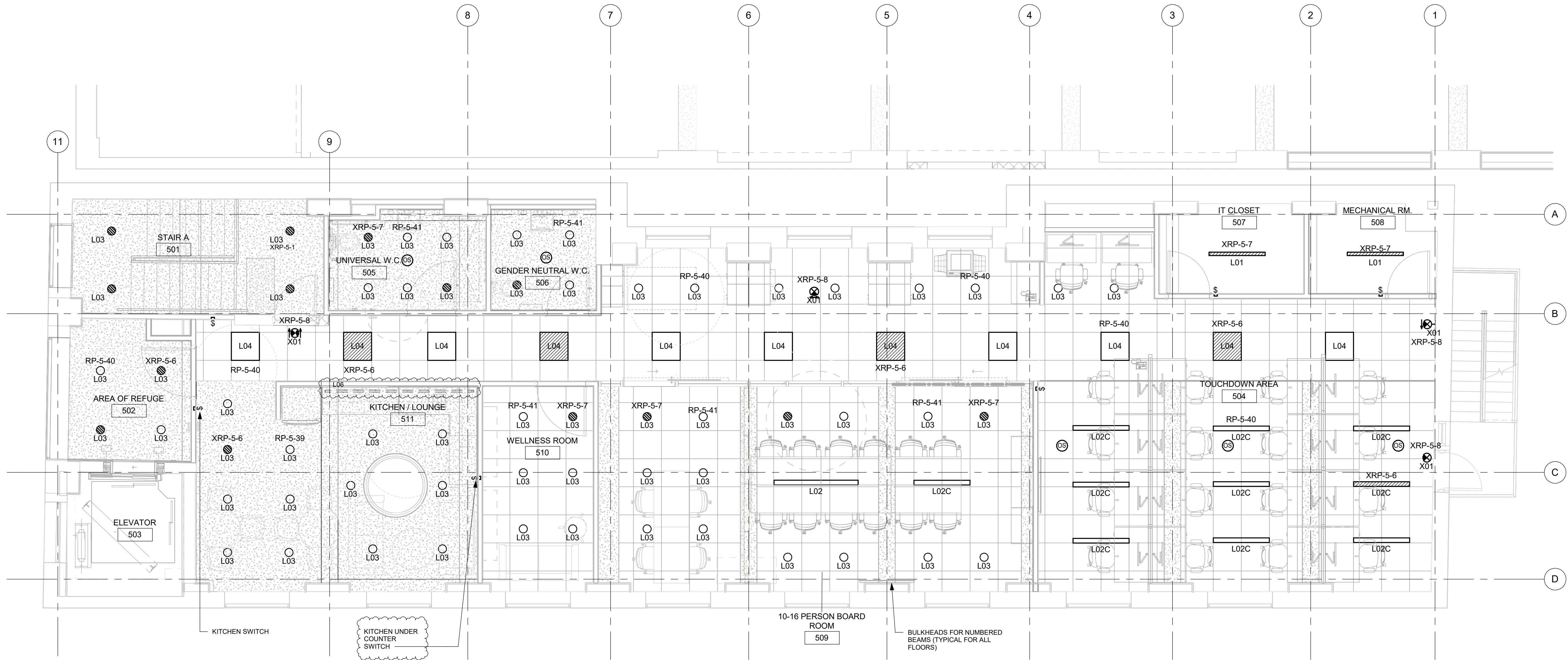
PROJECT ADDRESS  
**50 RICHMOND ST. E.  
RENOVATIONS  
50 RICHMOND STREET EAST  
TORONTO, ONTARIO**

PROJECT NO:  
9119-19-0162 / 30286113  
DRAWN BY:  
**M. BOJIC**  
CHECKED BY:  
**F. RASTI**  
PROJECT MGR:  
**F. BOULORIAN**  
APPROVED BY:  
**F. RASTI**

SHEET TITLE  
**ELECTRICAL LIGHTING  
PLAN 4TH FLOOR**

SHEET NUMBER  
**E3104**  
ISSUE  
**D**





1 FIFTH FLOOR  
E3105 Scale: 1 : 50

NOTES:

1. PROVIDE LIGHTS AS INDICATED ON PLAN. REFER TO LUMINAIRE SCHEDULE FOR DETAILS.
2. REFER TO LIGHTING CONTROLS OPERATIONS IN SPECIFICATION.
3. INTERLOCK BATHROOM EXHAUST CONTROLS WITH LIGHTING OCCUPANCY SENSOR. REFER TO MECHANICAL DRAWINGS FOR MORE DETAILS.
4. DUE TO HIGHLY CONGESTED CEILING, ESPECIALLY IN THE CORRIDOR AREAS, CONTRACTOR TO COORDINATE WITH MECHANICAL TRADE REGARDING ANY POTENTIAL INTERFERENCES PRIOR TO ANY INSTALLATION OF CONDUIT/MECHANICAL PIPING.
5. LIGHTS WITH HATCHING ARE FED FROM EMERGENCY CIRCUITS FED BY GENERATOR.
6. WHERE ONLY ONE CIRCUIT IS SHOWN IN ROOM, ALL NORMAL LIGHTS ARE FED ON THAT CIRCUIT. EMERGENCY LIGHTING CIRCUITS ARE INDICATED SEPARATELY.
7. EMERGENCY AND NORMAL CIRCUITS ARE CONTROLLED FROM SAME SWITCH, WITH EMERGENCY RELAY TO BRING EMERGENCY LIGHTS UP TO 100% DURING POWER FAILURE

**COPYRIGHT**  
This drawing has been prepared solely for the intended use, thus any reproduction or distribution for any purpose other than authorized by Arcadis is prohibited. Written dimensions shall have precedence over scaled dimensions. Contractors shall verify and be responsible for all dimensions and conditions on the job, and Arcadis shall be informed of any variations from the dimensions and conditions shown on the drawing. Shop drawings shall be submitted by Arcadis for general conformance before proceeding with fabrication.

Arcadis Professional Services (Canada) Inc.

ISSUES		
No.	DESCRIPTION	DATE
A	PERMIT	2025-08-11
B	TENDER	2025-09-02
C	ADDENDUM 4	2025-09-25
D	ADDENDUM 5	2025-09-30

CONSULTANTS

SEAL

PRIME CONSULTANT



175 Galaxy Blvd,  
Toronto, ON M9W 0C9, Canada  
tel 416 679 1930  
www.arcadis.com

PROJECT TITLE  
**CITY OF TORONTO  
ACCESSIBILITY UPGRADES**

PROJECT ADDRESS  
**50 RICHMOND ST. E.  
RENOVATIONS  
50 RICHMOND STREET EAST  
TORONTO, ONTARIO**

PROJECT NO:  
9119-19-0162 / 30286113

DRAWN BY:  
**M. BOJIC**

CHECKED BY:  
**F. RASTI**

PROJECT MGR:  
**F. BOULORIAN**

APPROVED BY:  
**F. RASTI**

SHEET TITLE  
**ELECTRICAL LIGHTING  
PLAN 5TH FLOOR**

SHEET NUMBER  
**E3105**

ISSUE  
**D**