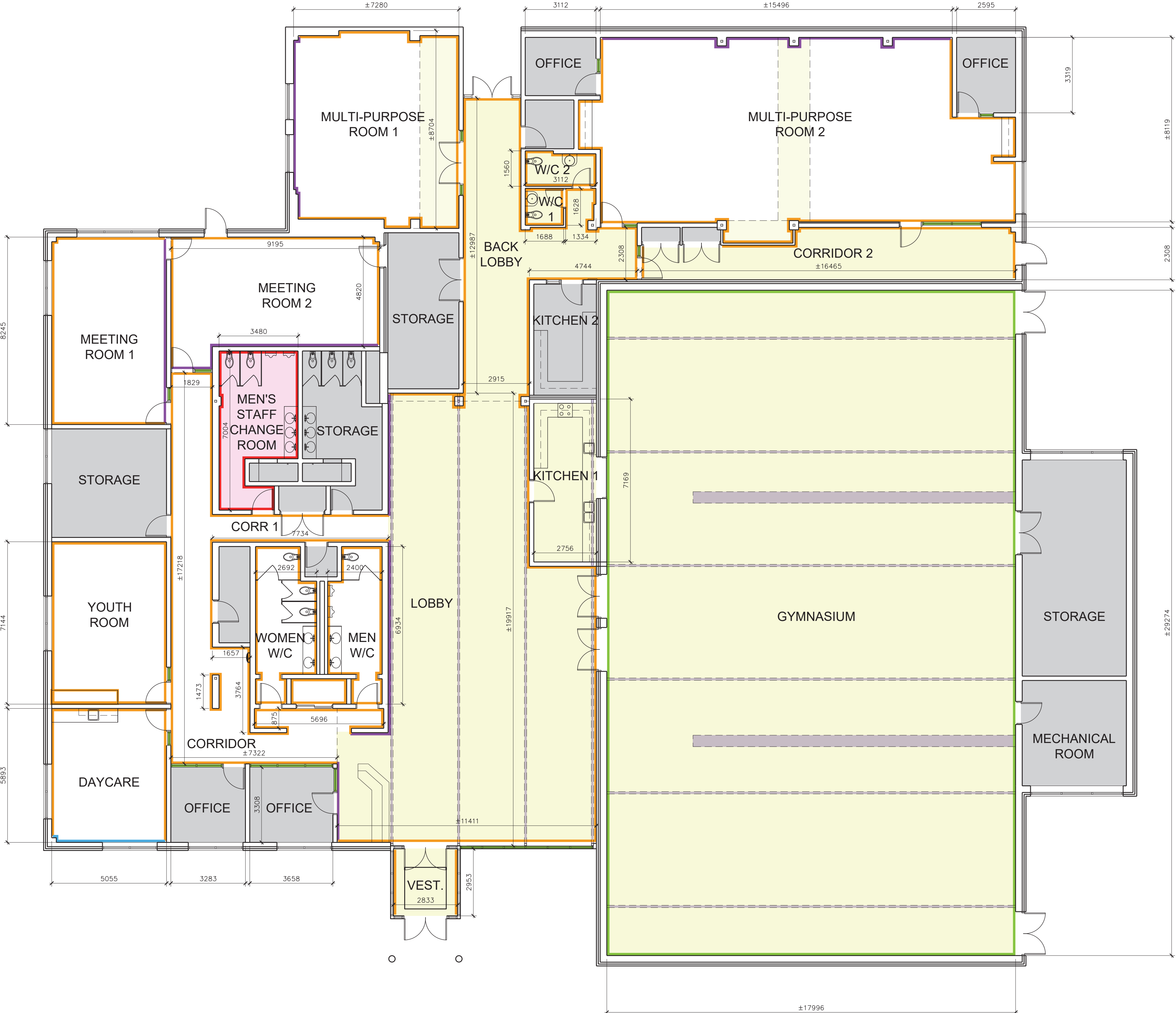


ROOM NAME	CEILING HEIGHT (Meters)	WALLS				CEILING	REMARKS
		NORTH	EAST	SOUTH	WEST		
Vestibule	7.8		PT1		PT1	PT5	Do not paint doors and frames. Paint gypsum wall and concrete block and ceiling.
Lobby	7.8	PT1	PT1	PT1	PT3	PT5 / PT6	Paint beams and ducts PT6. Paint metal deck PT5. Only paint previously painted frames.
Kitchen	3.1		PT1			PT5	Do not paint over tile. Only paint the ceiling.
Men Washroom 1	3.1	PT1	PT1	PT1	PT1		
Women Washroom 1	3.1	PT1	PT1	PT1	PT1		
Corridor	3.1	PT1 / PT2	PT1	PT1 / PT2	PT1 / PT2		Do not paint on wood doors, only door frames.
Corridor 1	3.1	PT1		PT1			
Daycare	3.1	PT1	PT1 / PT2	PT4	PT1		
Youth Room	3.1	PT1	PT1 / PT2	PT1	PT1		Paint heater PT1 and built-in millwork PT1. Do not paint on mural, paint around mural.
Meeting Room 1	3.1	PT1	PT2 / PT3	PT1	PT1		
Meeting Room 2	3.1	PT1	PT1	PT2 / PT3	PT1		
Men's Staff changeroom	3.1	PT1	PT1	PT1	PT1	PT5	This room is a Separate Price Item.
Multi-purpose Room 1	2.9	PT1	PT1 / PT2	PT1	PT3	PT5	Do not paint on ACT.
Multi-purpose Room 2	3.1	PT2 / PT3	PT1	PT1 / PT2	PT1 / PT2	PT5	Do not paint on ACT.
Back Lobby	3.1	PT1	PT1 / PT2	PT1	PT1 / PT2	PT5	
Washroom 1	2.8	PT1	PT1	PT1	PT1	PT5	
Washroom 2	2.8	PT1	PT1	PT1	PT1	PT5	
Corridor 2	3.5	PT1 / PT2	PT1	PT1	PT1 / PT2	PT5	Do not paint on architectural block and wood.
Gym	11.0	PT2	PT2	PT2	PT2	PT5 / PT6	Do not paint on acoustic CML, only paint under. Paint beams and ducts PT6.

ROOM FINISH SCHEDULE GENERAL NOTES (TYPICAL):

1. VERIFY THE CONDITION OF ALL SURFACES PRIOR TO PAINTING.
2. PATCH AND MAKE GOOD ALL EXISTING SURFACES AS REQUIRED TO ACHIEVE A UNIFORM AND CONTINUOUS APPEARANCE.
3. PATCH AND MAKE GOOD ALL EXISTING CEILINGS TO ACHIEVE A UNIFORM AND CONTINUOUS APPEARANCE.
4. ENSURE ALL PAINTED SURFACES ARE FREE OF DUST AND DEBRIS BEFORE PAINTING.
5. MASK AND COVER ALL FIXTURES, SWITCHES, AND OUTLETS BEFORE PAINTING.
6. USE DROP CLOTHS AND PROTECTIVE SHEETING TO COVER FLOORS, FURNITURE, EQUIPMENT AND ETC.
7. PROTECT ALL ADJACENT SURFACES FROM PAINT SPLATTERS AND DRIPS.
8. USE ONLY APPROVED PAINT MATERIALS AND COLORS AS SPECIFIED.
9. PAINT ALL WALL AND FRAME SURFACES.
10. PAINT BOTH SIDES OF ALL DOOR AND WINDOW FRAME SURFACES.
11. PAINT ALL PAINTABLE AND PREVIOUSLY PAINTED DOORS AND FRAMES.
12. PAINT ALL BULKHEADS, HORIZONTAL, AND VERTICAL SURFACES.
13. PAINT ALL PREVIOUSLY PAINTED SURFACES TO MAINTAIN CONSISTENCY AND COVERAGE.
14. ENSURE ALL PAINT LAYERS ARE EVEN AND CONSISTENT IN COLOR.
15. ALLOW SUFFICIENT DRYING TIME BETWEEN COATS AS PER MANUFACTURER'S INSTRUCTIONS.
16. DO NOT PAINT ANY FIRE ALARMS OR LIFE SAFETY DEVICES.
17. DO NOT PAINT ON NATURAL WOOD TEXTURE AREAS.
18. DO NOT PAINT ANY SCREWED-ON DEVICES.
19. DO NOT PAINT ANY WALL TILES UNLESS OTHERWISE NOTED.
20. DO NOT PAINT MILLWORK UNLESS OTHERWISE NOTED.
21. DO NOT PAINT ON OUTLETS AND COVER AD BUTTONS.
22. DO NOT PAINT ON WATER FOUNTAINS.
23. DO NOT PAINT ON WOOD TEXTURE RAILINGS, LIGHTING COVERS, ETC.
24. REMOVE, SALVAGE, STORE, AND REINSTALL ALL SIGNS AFTER PAINTING.
25. REMOVE, SALVAGE, STORE, AND REINSTALL ALL WALL-MOUNTED BULLETIN BOARDS AFTER PAINTING.
26. REMOVE, SALVAGE, STORE, AND REINSTALL ALL WALL-MOUNTED ACCESSORIES IN WASHROOMS AND OTHER ROOMS AFTER PAINTING.
27. REMOVE, SALVAGE, STORE, AND REINSTALL ALL WALL-MOUNTED ITEMS SUCH AS SIGNAGE THAT ARE LESS THAN 12 FT X 12 FT AFTER PAINTING.
28. PROVIDE PROPER VENTILATION IN AREAS BEING PAINTED TO ENSURE SAFETY.
29. ALL PAINTING WORK MUST COMPLY WITH LOCAL BUILDING CODES AND STANDARDS.
30. MAINTAIN A CLEAN AND ORGANIZED WORK AREA THROUGHOUT THE PAINTING PROCESS.
31. CLEAN AND DISPOSE OF ALL PAINTING MATERIALS AND WASTE ACCORDING TO ENVIRONMENTAL REGULATIONS.
32. PROVIDE TOUCH-UP PAINT FOR FUTURE USE BY THE OWNER.
33. DOCUMENT ANY CHANGES OR DEVIATIONS FROM THE ORIGINAL PAINTING PLAN.
34. REMOVE ALL PAINTING EQUIPMENT AND MATERIALS FROM THE SITE UPON COMPLETION.
35. CONDUCT A FINAL INSPECTION WITH THE PROJECT MANAGER TO ENSURE ALL PAINTING WORK MEETS QUALITY STANDARDS AS PER THE SPECIFICATIONS.
36. ENSURE ALL PAINTING WORK IS PERFORMED BY QUALIFIED AND EXPERIENCED PERSONNEL.
37. REMOVE ANY LOOSE OR PEELING PAINT FROM WALLS, FLOORS, CEILINGS, AND STEPS. PATCH AND REPAIR ANY DENTS, CRACKS, OR IMPERFECTIONS IN WALLS, PRIME AND PAINT WALLS, CEILINGS, AND SURFACES.
38. KEEP CORRIDORS AND COMMON AREAS CLEAN. THE BUILDING WILL REMAIN OCCUPIED AND FULLY OPERATIONAL FOR THE DURATION OF THIS PROJECT.
39. THE CONTRACTOR IS TO INCLUDE THE REMOVAL AND REINSTALLATION OF WALL-MOUNTED ITEMS AS REQUIRED TO COMPLETE THIS FULL SCOPE OF WORK. THE CONTRACTOR MUST CONFIRM REQUIREMENTS DURING SITE VISITS.
40. REMOVE EXISTING ADHESIVE, CAULKING, AND PAINT LINES FROM THE BASE OF EXISTING WALLS FOR INSTALLATION OF NEW OR REINSTALLED RUBBER BASE MATERIALS. SKIM COAT AS REQUIRED.
41. MECHANICAL AND ELECTRICAL DEVICES SUCH AS LIGHTING ARE NOT INDICATED ON THE DRAWINGS. CONTRACTOR SHALL CUT-IN AROUND ALL EXISTING LIGHT FIXTURES IN A MANNER SO THAT PAINT LINES ARE NOT VISIBLE.
42. ALL WORK SHALL BE PERFORMED DURING THE DAY TIME WITH TIME TO ALLOW SURFACES TO DRY PRIOR TO DAILY OCCUPANCY.
43. THE CONTRACTOR IS RESPONSIBLE FOR COORDINATING AND MANAGING THE MOVING OF FURNITURE AND EQUIPMENT, INCLUDING GYM EXERCISE EQUIPMENT, FOLLOWING THE COMPLETION OF PAINTING. THIS INCLUDES SAFELY REMOVING, STORING AND REINSTALLING THE EQUIPMENT TO ITS ORIGINAL CONDITION. THE CONTRACTOR MUST ENSURE THAT ALL EQUIPMENT IS PROPERLY RESTORED AND SECURELY REASSEMBLED TO ENSURE THE SAFETY OF USERS. ADDITIONALLY, A THIRD PARTY SAFETY INSPECTOR IS REQUIRED.
44. PAINT ALL EXPOSED STEEL BRACKETS.
45. REMOVE, DISCONNECT, STORE, AND REINSTALL ALL ELECTRICAL DEVICES SUCH AS TVs, POS SYSTEM, COMPUTERS, PHOTOCOPIERS, ETC.
46. CONTRACTOR TO REMOVE EXISTING SEALANTS AND PROVIDE NEW SEALANTS AT ALL MATERIAL JUNCTIONS. INSURE THAT ALL JUNCTIONS ARE PROPERLY CLEANED AND PREPARED BEFORE APPLYING NEW SEALANTS. VERIFY THAT ALL SEALANT MATERIALS ARE COMPATIBLE WITH ADJACENT SURFACES AND MEET PROJECT REQUIREMENTS, IN ACCORDANCE WITH SECTION 07 81 00.
47. CONTRACTOR SHALL PAINT ALL EXPOSED MECHANICAL DUCTWORK TO MATCH THE ADJACENT SURFACES, UNLESS OTHERWISE NOTED ON THE DRAWING OR ROOM FINISHING SCHEDULE.
48. CONTRACTOR SHALL PAINT ALL PREVIOUSLY PAINTED RADIATORS TO MATCH THE ADJACENT SURFACES, UNLESS OTHERWISE NOTED ON THE DRAWING OR ROOM FINISHING SCHEDULE.
49. DO NOT PAINT OVER FIRE-RATED LABELS ON DOORS AND DOOR FRAMES, REGARDLESS OF WHETHER THEY HAVE BEEN PREVIOUSLY PAINTED.

COLOUR FINISH SCHEDULE			
Colour	Sheen	Location	Sample
PT1 Benjamin Moore HC-173 "Edgecomb Gray"	Eggshell / Semi - gloss / Gloss	Eggshell: Interior Walls Semi-gloss: Interior Walls, Radiators Gloss: Millwork	PT1
PT2 Benjamin Moore AC - 28 "Smoke Embers"	Eggshell / Semi - gloss	Eggshell: Interior Walls Semi-gloss: Metal Hollow Frames All Doors (Both Sides)	PT2
PT3 Benjamin Moore 1634 "Santorini Blue"	Eggshell / Semi - gloss	Eggshell: Interior Walls Semi-gloss: Interior Walls, Radiators	PT3
PT4 Benjamin Moore 2021-50 "Yellow Lotus"	Eggshell	Interior Walls	PT4
PT5 White	Eggshell / Semi - gloss	All Interior Gypsum Ceilings Metal Deck	PT5
PT6 Benjamin Moore 2129-40 "Normandy"	Semi-gloss	Steel Beams and Trusses Ductwork	PT6



general notes :

1. These Contract Documents are the property of the Architect. The Architect bears no responsibility for the misinterpretations of these documents by the Contractor. Upon written application the Architect will provide written / graphic clarification or supplemental information regarding the intent of the Contract Documents. The Architect will review Shop Drawings submitted by the Contractor for design conformance only.
2. Drawings are not to be used for construction. Contractor to verify all existing conditions and dimensions required to perform the Work and report any discrepancies with the Contract Documents to the Architect before commencing work.
3. Positions of exposed or finished mechanical or electrical devices, fittings, and fixtures are indicated on the Architectural drawings. The locations shown on the Architectural drawings govern over the Mechanical and Electrical drawings. Those items not clearly located will be located as per directed by the Architect.

LEGEND:

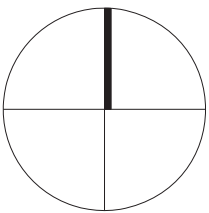
- OUTSIDE OF SCOPE
- DOOR: DO NOT PAINT
- PAINT DOOR & FRAMES BOTH SIDES

- PT1 Colour #1
- PT2 Colour #2
- PT3 Colour #3
- PT4 Colour #4
- PT5 Colour #5
- PT6 Colour #6

SEPARATE PRICE:

- PT1 Colour #1
- PT5 Colour #5

ISSUED FOR ADDENDUM NO1	08 APRIL 2025
ISSUED FOR TENDER	27 JANUARY 2024
revision	date



NORTH KIPLING
COMMUNITY CENTRE
PAINTING ENHANCEMENT
Address: 2 ROWNTREE RD, TORONTO ON
FLOOR PLAN /
SCHEDULES

project no. :	2419
scale :	1:100
date :	APRIL, 2025

drawing no. :

A2.1