

Addendum #5

CONSIDER IN YOUR RESPONSE/BID THE FOLLOWING ITEMS OF ADDITION, DELETION OR CLARIFICATION. INDICATE IN THE SPACE PROVIDED ON THE RESPONSE/BID FORM THAT YOU HAVE RECEIVED AND INCLUDED FOR THE REQUIREMENTS OF THIS ADDENDUM. SICKKIDS MAY, IN ITS SOLE DISCRETION ANSWER SIMILAR QUESTIONS FROM VARIOUS RESPONDENTS ONLY ONCE.

RE: SPECIFICATIONS & DRAWINGS

SPECIFICATIONS

1.1 REVISED SPECIFICATIONS

- .1 The following revised specifications issued with this addendum supersede previously issued specifications of the same title and number
 - .1 Section No. 00 01 10_R2, Table of Contents.
 - .2 Section No. 08 71 00_01_R1, Hardware Schedule.

DRAWINGS

1.2 REVISED DRAWINGS

- .1 The following Drawings are revised and re-issued with this addendum. Revisions are shown in bubbled areas on drawings. The following descriptions of revisions are for convenience only and do not define or limit the extent of actual revisions indicated on drawings:
 - .1 Drawing No. AF MN AN 02. DOOR SCHEDULE & DETAILS
 - .1 Door 7-A27 Revised in Schedule

We look forward to your diligent participation to ensure the success of this project.

Arash Hojabri, MBA

(Pronouns: he/him)

Senior Procurement Specialist

The Hospital for Sick Children

Phone: [416.813.7654](tel:416.813.7654) Ext. 401788

Cell: [416.834.4857](tel:416.834.4857)

e-mail: arash.hojabri@sickkids.ca

SickKids public tenders landing page on [Biddingo.com](http://www.biddingo.com/sickkids): www.biddingo.com/sickkids .

END OF ADDENDUM

Number	Title	Date	Pages
--------	-------	------	-------

**Project Manual
 For
 The Hospital for Sick Children
 7A Schedule – 1 Beds Refresh**

SPECIFICATIONS

Division 00 – Procurement and Contracting Requirements

	Title Page		1
00 01 07	Professional Certification and Seals	20 Feb 2025	1
00 01 10_R1R2	Table of Contents	17-20 Mar 2025	2
00 21 13	Instructions to Bidders		15
---	List of Bidders_R1		1
00 41 13_R1	Bid Form		3
00 43 00	Supplementary Bid Form		2
00 73 00	Supplementary Conditions to CCDC 2 2020		64

Division 01 - General Requirements

01 00 00	General Requirements	20 Feb 2025	13
	SickKids Electronic Close-out Guidelines	22 Sep 2021	5
	SickKids Testing, Commissioning, Acceptance and Turnover (TCAT) Standard	04 Dec 2017	51
01 25 13	Product Substitution Procedures	20 Feb 2025	4
01 35 33	Infection Control Procedures	20 Feb 2025	6
01 73 29	Cutting and Patching	20 Feb 2025	3

Division 02 – Existing Conditions

02 41 19	Selective Demolition	20 Feb 2025	5
----------	----------------------	-------------	---

Division 05 - Metals

05 50 00	Metal Fabrications	20 Feb 2025	10
----------	--------------------	-------------	----

Division 06 – Wood, Plastics and Composites

06 10 00	Rough Carpentry	20 Feb 2025	3
----------	-----------------	-------------	---

Division 07 - Thermal and Moisture Protection

07 21 00	Building Insulation	20 Feb 2025	5
07 27 00	Air Barriers	20 Feb 2025	4
07 84 00	Firestopping And Smoke Seals	20 Feb 2025	5
07 92 00	Joint Sealants	20 Feb 2025	8
07 95 00	Security Sealants	20 Feb 2025	4

Division 08 - Openings

08 11 13	Hollow Metal Doors and Frames	20 Feb 2025	7
08 11 16	Aluminum Screens	17 Mar 2025	5

Number	Title	Date	Pages
08 31 00	Access Doors and Panels	17 Mar 2025	2
08 34 00	Special Function Doors	20 Feb 2025	2
08 71 00	Hardware	20 Feb 2025	9
08 71 00_01R1	Hardware Schedule	14-15 Jan 2025	14-13
08 80 00	Glazing	20 Feb 2025	13
08 88 53_R1	Security Glazing	17 Mar 2025	7
Division 09 – Finishes			
09 06 00	Finishes Schedule	17 Mar 2025	3
09 21 16	Gypsum Board Assemblies	20 Feb 2025	11
09 65 00	Resilient Flooring	20 Feb 2025	6
09 67 23	Resinous Flooring	17 Mar 2025	6
09 91 00_R1	Painting	17 Mar 2025	10
Division 10 – Specialties			
10 00 00_R1	Manufactured Specialties	17 Mar 2025	2
10 26 23	Protective Wall Coverings	20 Feb 2025	4
10 28 00	Washroom Accessories	20 Feb 2025	4
Division 12 – Furnishings			
12 24 15_R1	Roller Shades	17 Mar 2025	3
Mechanical & Electrical Specifications		20 Feb 2025	263
Appendices			
Appendix A1	Procedures for Construction, Renovation & Physical Plant Projects	May 2024	267
Appendix A2	Network Cabling Specification	15 Nov 2024	47
Appendix A3	Hazardous Building Materials Reassessment (Pre Construction)	05 Mar 2025	70

End of Table of Contents

DOOR HARDWARE

08 71 00

PROJECT:



SickKids 7A
555 University Ave.
Toronto, ON

ARCHITECT:



175 Bloor Street E.
North Tower, 15th Floor
Toronto, ON

Prepared By: Alex Bekmansourov

Date: January 15, 2025

Revised:

Architectural Hardware Finishes

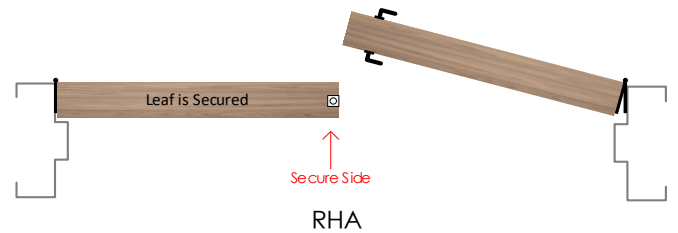
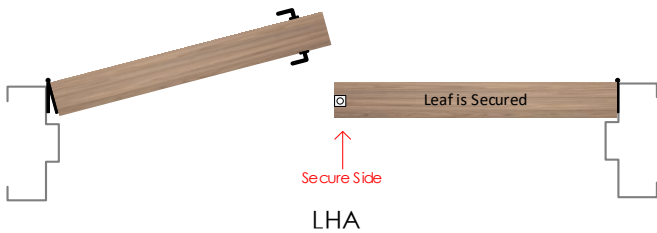
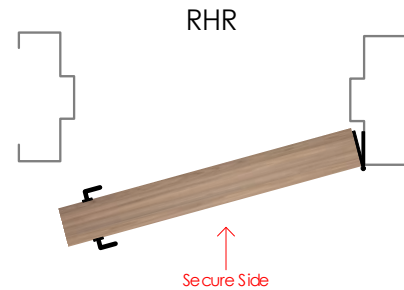
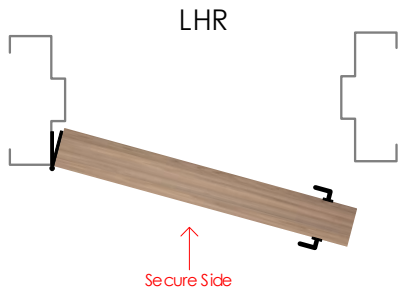
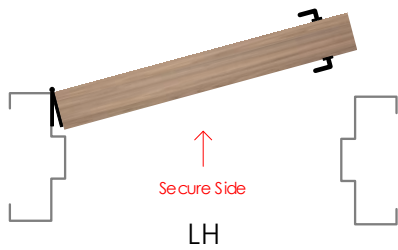
	Steel	Stainless Steel	Brass/Bronze	Aluminum	Paint/Powder Coat	US/CAN
Clear Anodized				628	689	US28
Satin Nickel	646		619	670		US15
Polished Nickel	645		618	669		US14
Satin Stainless Steel		630				US32D
Polished Stainless Steel		629				US32
Satin Chrome	652		626	702		US26D
Polished Chrome	651		625	672		US26
Satin Brass	633		606	667	678	US4
Polished Brass	632		605	666	677	US5
Satin Bronze	639		612	668	680	US10
Oil Rubbed Bronze	640		613	703	695	US10B
Flat Black / Anodized Black	631		622	671	693	US19

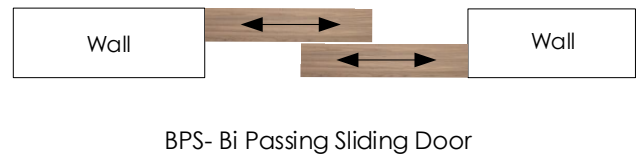
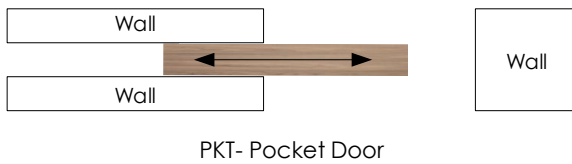
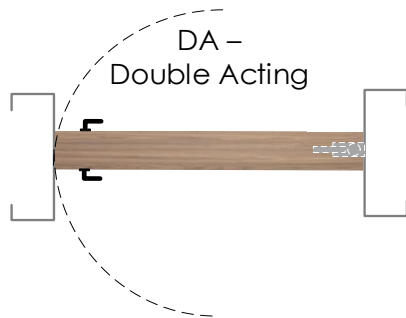
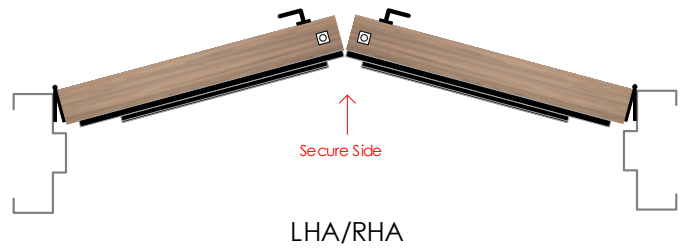
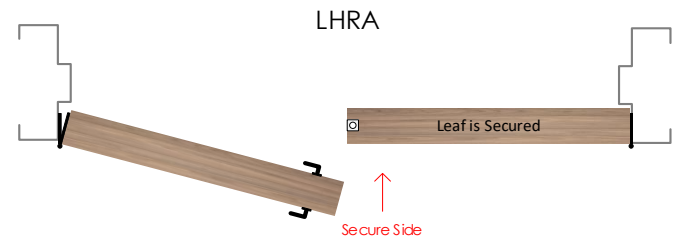
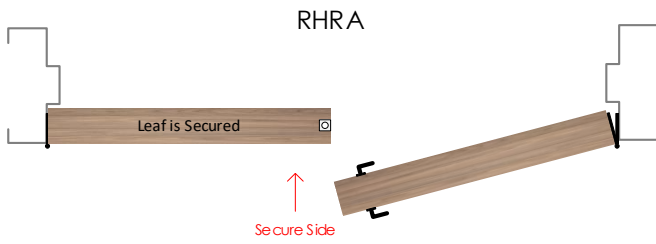
Door Handing's

Abbreviations

RH = Right Hand	RHA = Right Hand Active	SS = Single Slider
LH = Left Hand	LHA = Left Hand Active	BP = Bi-Parting Slider
RHR = Right Hand Reverse	RHA/LHA = Right & Left Hands Active	BF = Bi-Folding Slider
LHR = Left Hand Reverse	RHRA/LHRA = Right & Left Hand Reverse Active	TS = Telescopic Slider
RHRA = Right Hand Reverse Active	DA = Double Acting	PKT = Pocket Slider
LHRA = Left Hand Reverse Active	DE = Double Egress	

NOTE: The handing of a swing door is determined by placing yourself on the secured or keyed side of the door.





Products & Alternatives

NOTE: Only those products / brands listed here are acceptable and should be used to form a bid price. No unsolicited products will be considered. If acceptable alternates are listed here those too can be used to form a bid price provided, they are exactly the same as the specified item. If using an alternate product to form a price it is the bidder's responsibility to ensure that product is identical in every way to the specified item. If no alternates are listed, no alternate products are acceptable.

Product Type	Product#	Manufacturer	Alternate Manufacturer 1	Alternate Manufacturer 2
Continuous Hinges	CFM_HD	Pemko	Ives	Best
Power Transfer	CEPT-10	Securitron	Von Duprin	Dormakaba
Automatic Flush Bolts	2842	Rockwood	Ives	Hager
Combination Flush Bolts	2805	Rockwood	Ives	Hager
Mortise Locks	8200 Series	Sargent	N/A	N/A
Exit Devices	80 Series	Sargent	N/A	N/A
Electric Strike	1500C	HES	N/A	N/A
Door Pull	2512-2	Standard Metal	CBH	Gallery
Door Pull	D352-1	Standard Metal	CBH	Gallery
Push Plate	K11B	Standard Metal	CBH	Gallery
Overhead Stops	6 Series	Rixson	N/A	N/A
Closers	281 Series	Sargent	N/A	N/A
Closers	351 Series	Sargent	N/A	N/A
Auto Operators	SW-200i	Besam	N/A	N/A
Column Push Plate Actuator	CM-7536/4	Camden	BEA	N/A
Logic Relay	CX-33	Camden	BEA	N/A
Safety Sensor Kit	10LZRFLATSCAN-SWB	BEA	Optex	N/A
Wall Stop	S120	Standard Metal	CBH	Gallery
Armour/Kick/Mop Plates	K10A & K10F	Standard Metal	CBH	Gallery
Door Edge Guard	K42 & K42F	Standard Metal	CBH	Gallery
Frame Guard	K50/K51 & K50F/K51F	Standard Metal	CBH	Gallery
Gasketing	W-66	KN Crowder	Pemko	National Guard
Door Sweep	W-24S	KN Crowder	Pemko	National Guard
Auto Door Bottom	CT-53	KN Crowder	Pemko	National Guard
Auto Door Bottom	CT-54	KN Crowder	Pemko	National Guard
Door Contact	DPS-M-BK	Securitron	N/A	N/A

Symbols



- Door has a fire rating and all associated hardware must have a fire label to suit. Must comply with local requirements.



- Door is automatic and is equipped with an auto operator. Door must meet local barrier free codes



- Door has an electrical requirement and requires power to be brought to the appropriate location above the door or to the latch, for either security or barrier free applications. Refer to security & electrical drawings for further information.



- Door requires security card access. Refer to security / electrical drawings for further information.

Abbreviations

Door:

HMD = Hollow Metal Door
 IHMD = Insulated Hollow Metal Door
 ALD = Aluminum Door
 SSD = Stainless Steel Door
 ISSD = Insulated Stainless Steel Frame
 STL = Steel Door
 IC-ALD = Insulated Clad Aluminum Door
 SCWD = Solid Core Wood Door
 HCWD = Hollow Core Wood Door
 FGD = Frameless Glass Door
 FRP = Fiberglass Reinforced Plastic Door
 OHD = Overhead Door

Frame:

HMF = Hollow Metal Frame
 ALF = Aluminum Frame
 Cased Open HMF = Cased Open Hollow Metal Frame
 SSF - Stainless Steel Frame
 STL = Steel Frame
 WDF = Wood Frame
 Cased Open WDF = Cased Open Wood Frame
 Cased Open Drywall = Cased Open Drywall

Fire Ratings:

0 HR – Zero Hour Fire Rating / Smoke Barrier
 20 MIN – 20 Minute Fire Rating
 ¼ HR – 45 Minute Fire rating
 1 ½ HR – 90 Minute Fire Rating
 2 HR – 120 Minute Fire Rating
 3 HR – 180 Minute Fire Rating

Disclaimer

Weblinks:

Weblinks do change from time to time as manufacturers move around their websites, please inform us if you have a none functioning weblink.

HARDWARE SCHEDULE



Heading# 1

Opening Information					
Opening Type:	Single	Opening Size:	965 x 2135 x 45	STC Rating	None
Door Material:	HMD	Frame Material:	HMF	Fire Rating	None

1	Total Openings							
1	Door#	7-A27	Location:	Corridor 76ST3	To	Patient Washroom 7A27	Handing:	RH

By Hardware Supplier					
1	Double Acting hinge	DSH1000 x 2135	630 / US32D / Satin Stainless Steel	Pemko	
1	Emergency Release stop	ERS-84-C-HT-RH-NOTCH	628 / US28 / Clear Anodized	Pemko	
1	Storeroom Lockset	CH 9159SEC-234-US32D-RH-134-LRCC.562-SP	630 / US32D / Satin Stainless Steel	Accurate	
1	LFIC Mortise Cylinder Housing	32-0275	626 / US26D / Satin Chrome	Medeco	
1	LFIC Construction Core	320201CC BI R1	626 / US26D / Satin Chrome	Medeco	
1	LFIC Permanent Core	320201	626 / US26D / Satin Chrome	Medeco	
1	Adjustable Collar	CP-160180-26	626 / US26D / Satin Chrome	Medeco	
1	Electric Strike	1500C-TORX	630 / US32D / Satin Stainless Steel	HES	
1	Overhead Stop	104S-SOC*	630 / US32D / Satin Stainless Steel	Glynn Johnson	
1	Kick Plate	K10A – 255 x 876 x TORX	630 / US32D / Satin Stainless Steel	Standard Metal	
1	Mop Plate	K10A – 152 x 890 x TORX	630 / US32D / Satin Stainless Steel	Standard Metal	
1	Ligature resistant Seals	188S-BK-ZAG x 5400	Black	Zero	
By Automatic Operator Supplier					
1	Auto Operator	BESAM SW200i - Pull	628 / US28 / Clear Anodized	Besam	
2	Column Push Plate Actuator	CM-7536/4	628 / US28 / Clear Anodized	Camden	
1	Logic Relay	CX-33		Camden	

Notes:

- 120VAC is required at the head of the door for all barrier free door operators, 15A dedicated circuit. Wall/Frame must be reinforced for automatic operator mounting, all conduit and back boxes for actuators, emergency call kits, and washroom locking kits with pull cords are to be provided by the electrical contractor.
- Electrician to confirm wire locations with auto door operator supplier prior to pulling wires.
- Confirm With Template Prior to Ordering.

-----End of Heading-----



Heading# 2

Opening Information					
Opening Type:	Single	Opening Size:	1200 x 2135 x 45	STC Rating	None
Door Material:	HMD	Frame Material:	HMF	Fire Rating	None

1	Total Openings							
1	Door#	7-A28	Location:	Corridor 76ST3	To	Observation Room 7A28	Handing:	LH
1	Door#	7-A29	Location:	Corridor 76ST3	To	Observation Room 7A29	Handing:	RH

By Hardware Supplier					
2	LFIC Mortise Cylinder Housing	32-0275	626 / US26D / Satin Chrome	Medeco	
2	LFIC Construction Core	320201CC BI R1	626 / US26D / Satin Chrome	Medeco	
2	LFIC Permanent Core	320201	626 / US26D / Satin Chrome	Medeco	
2	Adjustable Collar	CP-160180-26	626 / US26D / Satin Chrome	Medeco	

By Kingsway Group						
2	Complete Anti-Barricade Door System	Kingsway Group – Swing Anti-Barricade Door System – Complete with doors, frames and all required hardware. Hardware to include anti-barricade double acting hinge with emergency key release and electric power-transfer, Accurate Electrified Anti-Ligature Institutional Lockset c/w Latch Monitor and Door Position Monitor. Concealed Double Acting Closer & Anti-Ligature Wall Stop.				

By Security Supplier						
2	Card Reader	By Security Supplier				
1	Door Contact	By Kingsway Group – Wired by Security				
1	Latch Bolt Monitor	By Kingsway Group – Wired by Security				
1	Door Position Contact	By Kingsway Group – Wired by Security				
1	Access Controller	By Security Supplier				
1	Power Supply	By Security Supplier – Located in Central Location				



Heading# 3

Opening Information					
Opening Type:	Single	Opening Size:	915 x 2134 x 45 (Dutch Door)	STC Rating	None
Door Material:	HMD	Frame Material:	HMF	Fire Rating	None

1 Total Openings								
1	Door#	7-A27A	Location:	Corridor 76ST3	To	Nurse Station 7A27A	Handing:	RH

By Hardware Supplier						
1	Continuous Hinge		CFM83HD1-HT (Cut Onsite)	628 / US28 / Clear Anodized	Pemko	
1	Continuous Hinge		CFM83HD1 (Cut Onsite)	628 / US28 / Clear Anodized	Pemko	
1	Mortise Storeroom Lockset		LC-8204 LNJ	630 / US32D / Satin Stainless Steel	Sargent	
1	LFIC Mortise Cylinder Housing		32-0275	626 / US26D / Satin Chrome	Medeco	
1	LFIC Construction Core		320201CC BI R1	626 / US26D / Satin Chrome	Medeco	
1	LFIC Permanent Core		320201	626 / US26D / Satin Chrome	Medeco	
1	Adjustable Collar		CP-160180-26	626 / US26D / Satin Chrome	Medeco	
1	Flush Bolt		555	689 / US28 / Painted Aluminum	Rockwood	
1	Electric Strike		1500C	630 / US32D / Satin Stainless Steel	HES	
1	Overhead Stop		2-236 (With Hold Open)	689 / US28 / Painted Aluminum	Rixson	
1	Closer		1431-O	630 / US32D / Satin Stainless Steel	Sargent	
1	Wall Stop		S121 x 630	630 / US32D / Satin Stainless Steel	Rockwood	
1	Kick Plate		K10A – 255 x 876 x TORX	630 / US32D / Satin Stainless Steel	Standard Metal	
1	Anti Ligature Gasketing		188S-BK-ZAG x 5700	Black	Zero	
1	Auto Door Bottom		CT-54 x 915	719 Milled Aluminum	KN Crowder	
2	Door Contact		DPS-M-BK	Black	Securitron	
By Security Supplier						
1	Card Reader	By Security Supplier – To Suit Building System				

*	Door Contact	Provided by Hardware Supplier – Wired By Security Supplier			
1	Request to Exit Sensor	By Security Supplier			
1	Access Controller	By Security Supplier			
1	Power Supply	By Security Supplier – Powered by Security Panel			

Notes:

- Final commissioning of all access control items, such as but not limited to electric strikes, Rex sensors, Door contacts, Electrified Panics, Relays & Maglocks is the responsibility of the security provider

.....End of Heading.....



Heading# 4

Opening Information					
Opening Type:	Single	Opening Size:	915 x 2134 x 45	STC Rating	None
Door Material:	HMD	Frame Material:	HMF	Fire Rating	1 1/2 HR

1	Total Openings							
1	Door#	7-A27B	Location:	Existing Space	From	Nurse Station 7A27A	Handing:	LHR

By Hardware Supplier						
1	Continuous Hinge		CFM83HD1-HT	628 / US28 / Clear Anodized	Pemko	
1	Mortise Storeroom Lockset		LC-8204 LNJ	630 / US32D / Satin Stainless Steel	Sargent	
1	LFIC Mortise Cylinder Housing		32-0275	626 / US26D / Satin Chrome	Medeco	
1	LFIC Construction Core		320201CC BI R1	626 / US26D / Satin Chrome	Medeco	
1	LFIC Permanent Core		320201	626 / US26D / Satin Chrome	Medeco	
1	Adjustable Collar		CP-160180-26	626 / US26D / Satin Chrome	Medeco	
1	Closer		351-P10	689 / US28 / Painted Aluminum	Sargent	
1	Overhead Stop		1ADJ-336	689 / US28 / Painted Aluminum	Rixson	
1	Kick Plate		K10A – 255 x 876 x TORX	630 / US32D / Satin Stainless Steel	Standard Metal	
1	Gasketing		W-66 x 5400	Black	KN Crowder	
1	Auto Door Bottom		CT-54 x 915	719 Milled Aluminum	KN Crowder	

Notes:

- Final commissioning of all access control items, such as but not limited to electric strikes, Rex sensors, Door contacts, Electrified Panics, Relays & Maglocks is the responsibility of the security provider

.....End of Heading.....



Heading# 5

Opening Information

Opening Type:	Pair	Opening Size:	2 x 1065 x 2150 x 45	STC Rating	None
Door Material:	HMD	Frame Material:	HMF	Fire Rating	1 1/2 HR

1	Total Openings							
1	Door#	7-A27E	Location:	Corridor 76ST3	to/from	Existing Corridor	Handing:	DE

By Hardware Supplier

2	Elec. Continuous Hinge	CFM83HD1-PT - HT	628 / US28 / Clear Anodized	Pemko	
2	Power Transfer	CEPT-10	630 / US32D / Satin Stainless Steel	Securitron	
2	Elec. Exit Device	55-56-12-NB-MD8610J x 630	630 / US32D / Satin Stainless Steel	Sargent	
2	Armour Plate	GSH 90F – 864 x 1027 x TORX	630 / US32D / Satin Stainless Steel	Gallery	
2	Overhead Stop	105S-SOC*	630 / US32D / Satin Stainless Steel	Glynn Johnson	
1	Anti Ligature Gasketing	188S-BK-ZAG x 8500	Black	Zero	
2	Auto Door Bottom	CT-54 x 1065	719 Milled Aluminum	KN Crowder	
2	Astragal	By HM Door Provider			
2	Door Contact	DPS-M-BK	Black	Securitron	

By Automatic Operator Supplier

1	Auto Operator (Pair)	BESAM SW200i – Double Egress ADO – C/W Specialized Arms. Install ADO on Non Mental Health Corridor Side	628 / US28 / Clear Anodized	Besam	
2	Column Push Plate Actuator	CM-7536/4	628 / US28 / Clear Anodized	Camden	
1	Logic Relay	CX-33		Camden	

By Security Supplier

2	Card Reader	By Security Supplier – To Suit Building System			
*	Door Contact	Provided by Hardware Supplier – Wired By Security Supplier			
*	Request to Exit Sensor	Provided inside Exit Device – Wired By Security Supplier			
1	Access Controller	By Security Supplier			
1	Power Supply	By Security Supplier – Powered by Security Panel			
2	Magnetic Lock	By Security Supplier – Securitron - M680	630 / US32D / Satin Stainless Steel	Securitron	
1	FA Integration	By Security Supplier			

1	FA Pull Station	By Security Supplier		
---	-----------------	----------------------	--	--

Notes:

- 120VAC is required at the head of the door for all barrier free door operators, 15A dedicated circuit. Wall/Frame must be reinforced for automatic operator mounting, all conduit and back boxes for actuators, emergency call kits, and washroom locking kits with pull cords are to be provided by the electrical contractor.
- Electrician to confirm wire locations with auto door operator supplier prior to pulling wires.

-----End of Heading-----



Heading# 6

Opening Information					
Opening Type:	Single	Opening Size:	EXISTING	STC Rating	None
Door Material:	Existing	Frame Material:	Existing	Fire Rating	1 1/2 HR

1	Total Openings							
1	Door#	7-ST2	Location:	Stair 76ST2	From	Corridor 76ST3	Handing:	LHR

By Hardware Supplier					
		BALANCE OF EXISTING HARDWARE TO REMAIN			
1	Anti Ligature Gasketing	188S-BK-ZAG x 5400	Black	Zero	

***ALL EXISTING HARDWARE TO REMAIN**

***REMOVE EXISTING ALUM-WEATHERSTRIP AND INSTALL NEW ANTI LIGATURE SMOKE SEALS.**

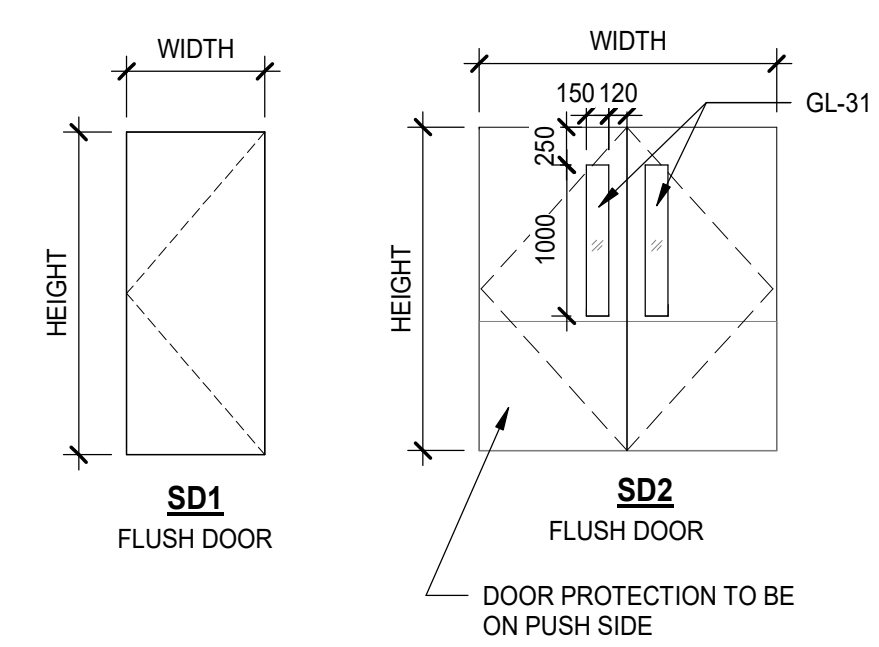
-----End of Heading-----

END OF SCHEDULE

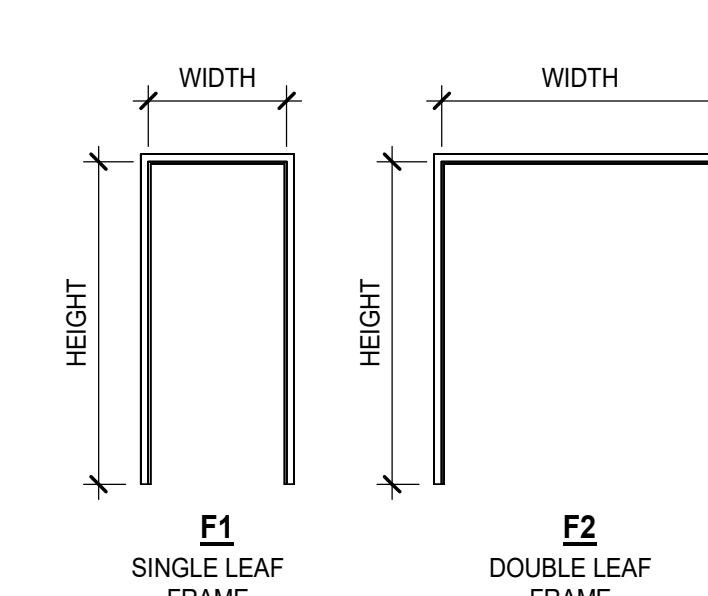
3/20/2025 14:02:28 PM
 4
 9
 8
 13x
 4
 3
 2
 1

DOOR & FRAME SCHEDULE												
DOOR NO.	TYPE	DIMENSIONS			GLASS			FRAME PARAMETERS			FIRE RATING	COMMENTS
		WIDTH	HEIGHT	THK	MATL	TYPE	FINISH	MATL	TYPE	FINISH		
7-A27	SD1	965	2135	45	HM	(none)	PTD	F1	PS	(none)	PTD	
7-A27A	SD1	915	2150	45	HM	GL-30	PTD	F1	PS	(none)	PTD	
7-A27B	SD1	915	2150	45	HM	GL-30	PTD	F1	PS	(none)	PTD	
7-A27E	SD2	1100+1100	2150	45	HM	GL-31	PTD	F2	PS	(none)	PTD	DOUBLE DOOR- 1100 EACH, DOOR PROTECTION ON PUSH SIDE.
7-A28	PD1	1200	2150	45	-	GL-30	-	-	-	-	-	SPECIALTY DOOR SYSTEM, REFER TO ELEVATION
7-A29	PD1	1200	2150	45	-	GL-30	-	-	-	-	-	SPECIALTY DOOR SYSTEM, REFER TO ELEVATION

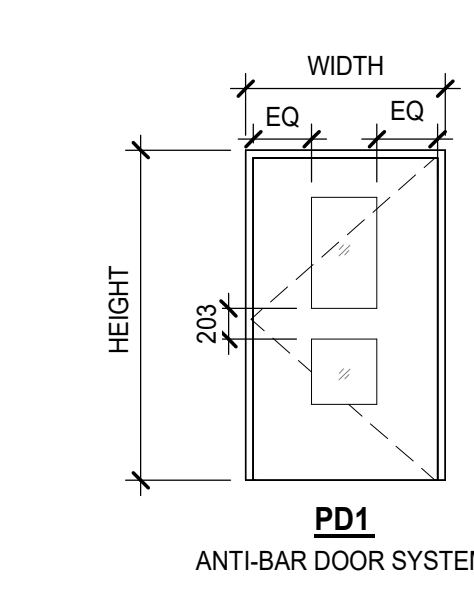
SINGLE SWING DOOR TYPES



FRAME TYPES



PACKAGED DOOR TYPES



DOOR / FRAME LEGENDS & ABBREVIATIONS

LEGEND / ABBREVIATIONS		DOOR TYPES LEGEND	
ALUM	ALUMINUM	BF	BIFOLD DOOR
ANDZ	ANODIZED	CD	COLING DOOR
CLR	CLEAR	CS	COUNTER SHUTTER
DCRON	DURACRON	DD	DOUBLE SWING DOOR
DNAR	DURANAR	GA	GLAZED ALUMINUM DOOR
EXT	EXTERIOR	GL	GLASS DOOR
F	FRAME	HD	HANGAR DOOR
G ()	GLASS (type)	ID	IMPACT DOOR
GA	GLAZED ALUMINUM	OH	OVERHEAD DOOR
GALV	GALVANIZED	RE	REVOLVING DOOR
GWG	GERMAN WIRE GLASS	RO	ROLLING DOOR
HCW	HOLLOW CORE WOOD	RR	RAPID ROLL DOOR
HM	HOLLOW METAL	SD	SINGLE SWING DOOR
HR	HOUR	SL	SLIDING DOOR
INSUL	INSULATED	SP	SPECIAL DOOR (define and detail)
MIN	MINUTE		
N/A	NOT APPLICABLE		
NO FR	NO FRAME (FRAMELESS)		
PC	POWDER COAT		
PS	PRESSED STEEL		
PTD	PAINTED		
SCW	SOLID CORE WOOD		
SS	STAINLESS STEEL		
STL	STEEL		
TSG	TEMPERED SAFETY GLASS		
WD	WOOD		
WV	WOOD VENEER		

DOOR AND FRAME GENERAL NOTES

1. REFER TO SPECIFICATIONS OR FINISH IDENTIFICATION SCHEDULE FOR DESCRIPTION OF FINISHES AND COLOURS

DATE	ISSUED FOR	REV
2025-01-16	ISSUED FOR 85% CD	1
2025-02-20	PERMIT & TENDER	2
2025-03-17	ADDENDUM 2	3
2025-03-20	ADDENDUM 5	4

This drawing has been prepared solely for the use of SickKids and there are no representations of any kind made by NORR limited architects and engineers to any party with whom NORR limited architects and engineers has not entered into a contract.

This drawing shall not be used for construction purposes until the seal appearing hereon is signed and dated by the Architect or Engineer.

Keyplan

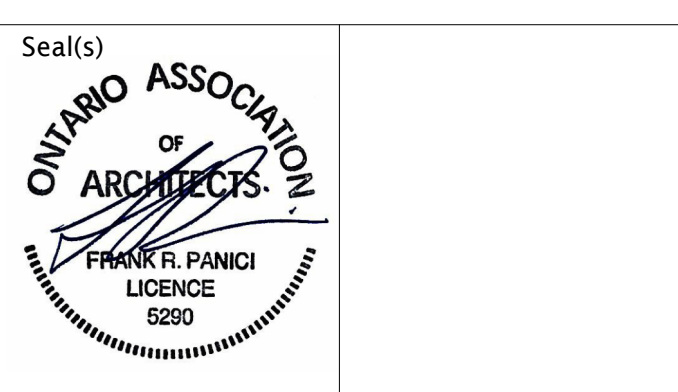
North Arrow

Detail Symbol

Detail No. Sheet No.

Consultants

Civil: Landscape & Planning;
 Architecture: Structural;
 Mechanical: Electrical;
 Survey: Branding;



NORR

NORR Architects & Engineers Limited

175 Bloor Street East
 North Tower, 15th Floor
 Toronto, ON, Canada M4W 3R8
 norr.com

Project Manager	Drawn
Checker	F.Emre
Project Leader	Checked
	Checker

SickKids

555 University Ave., Toronto, ON M5G 1X8

Project
SICKKIDS - 7A SCHEDULE - 1BEDS
 REFRESH
 ATRIUM (SLAUGHT) WING, 110 ELIZABETH STREET, TORONTO, ON, MSG 1E8

Drawing Title
DOOR SCHEDULE & DETAILS

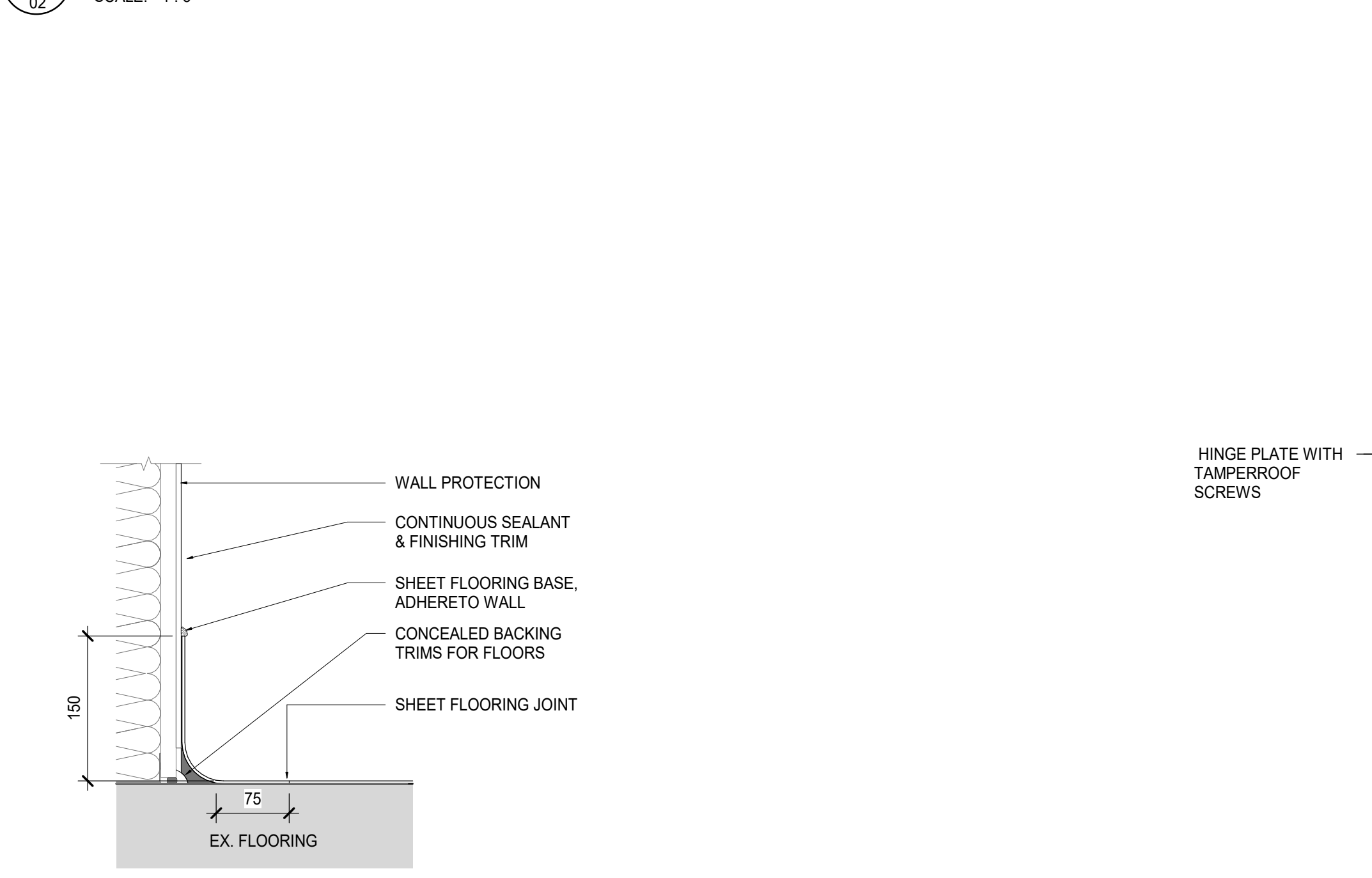
Check Scale (may be photo reduced)

0 1 inch 10mm

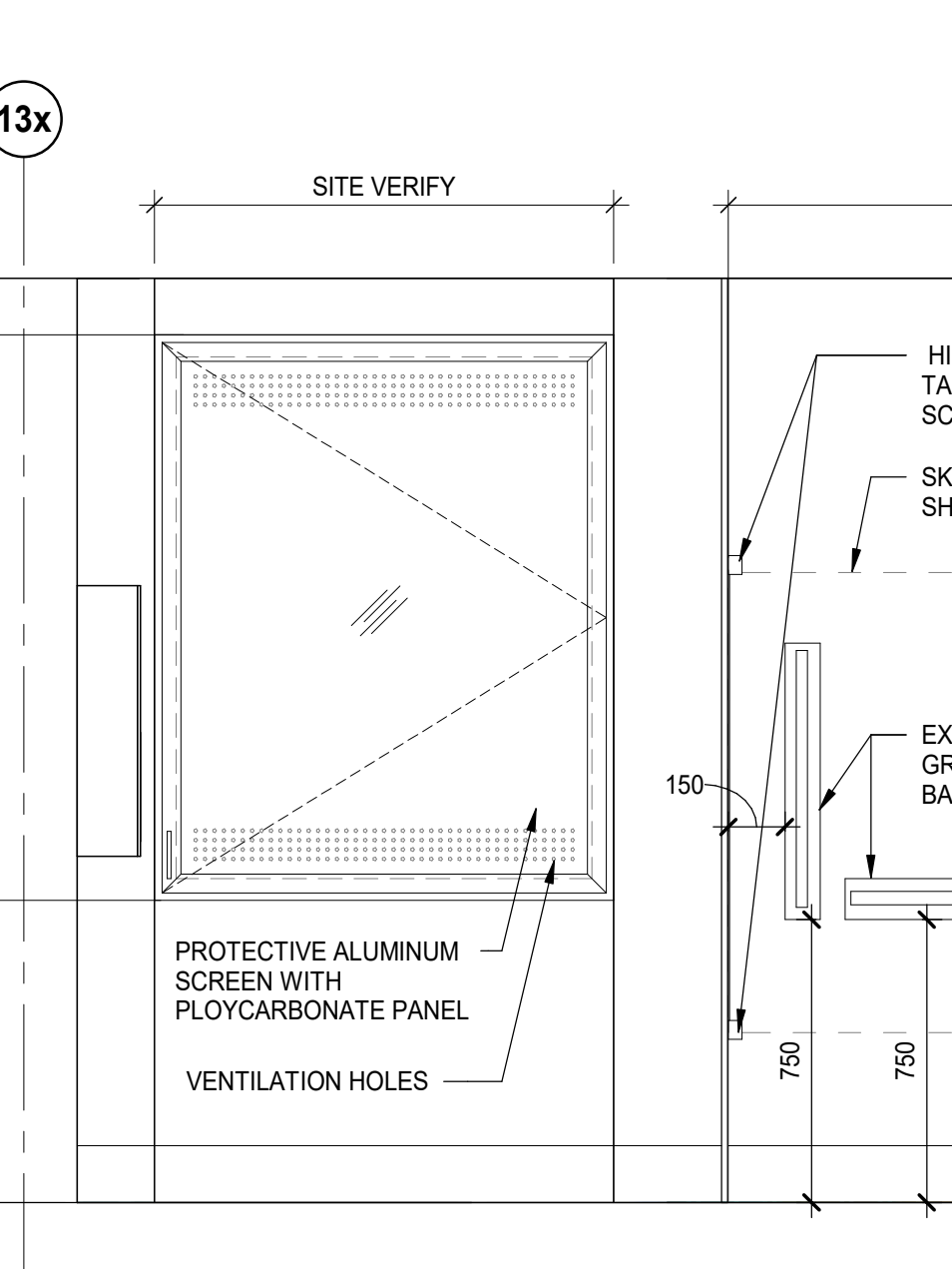
Project No.
 HS 1024-0176

Drawing No.
 AF MN AN 02

8 TYPICAL BARRIER FREE SHOWER DETAIL
 SCALE: 1:5



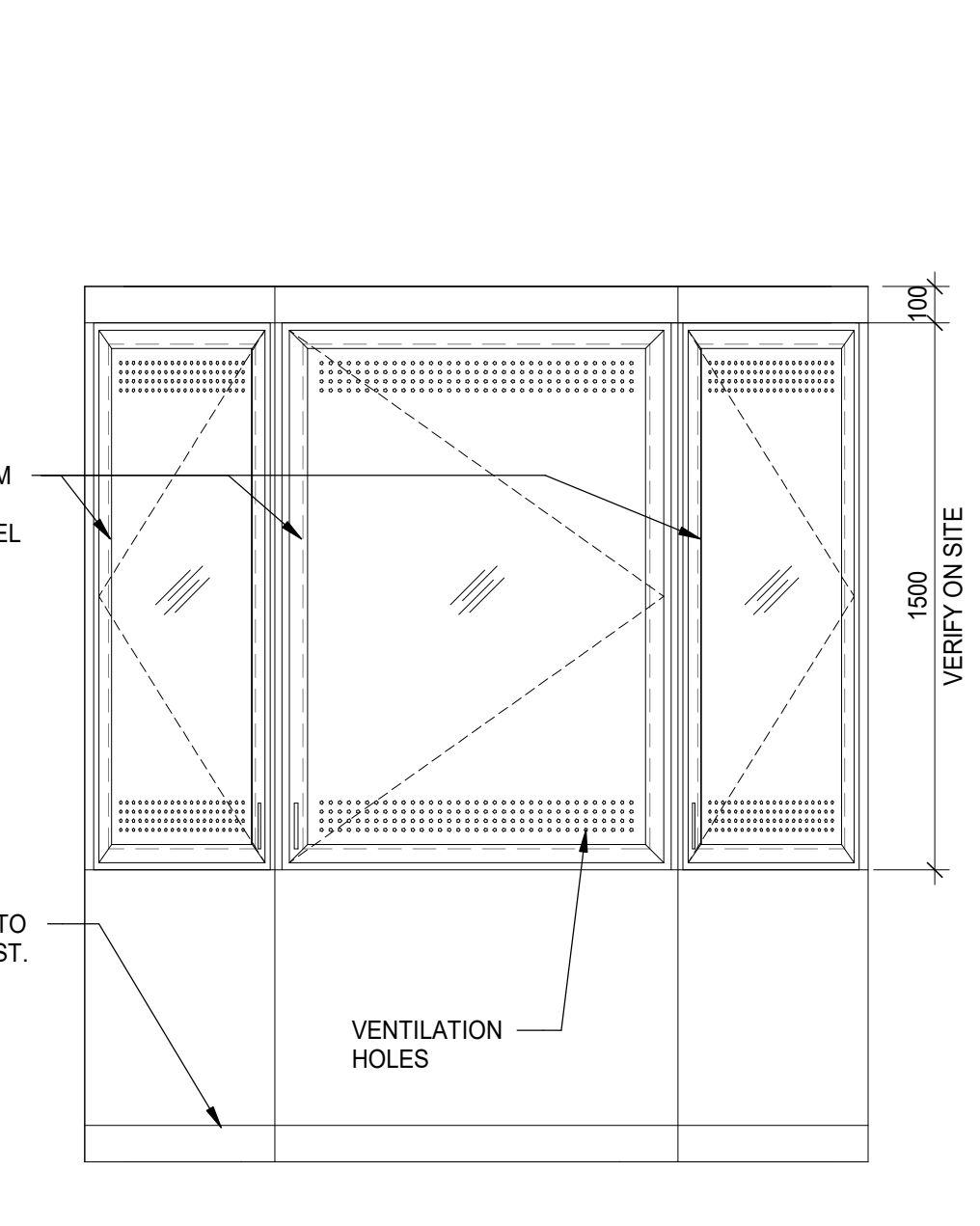
8 TYPICAL COVE BASE
 SCALE: 1:5



4 WINDOW S1 & SHOWER -PATIENT WASHROOM ELEVATION
 SCALE: 1:20



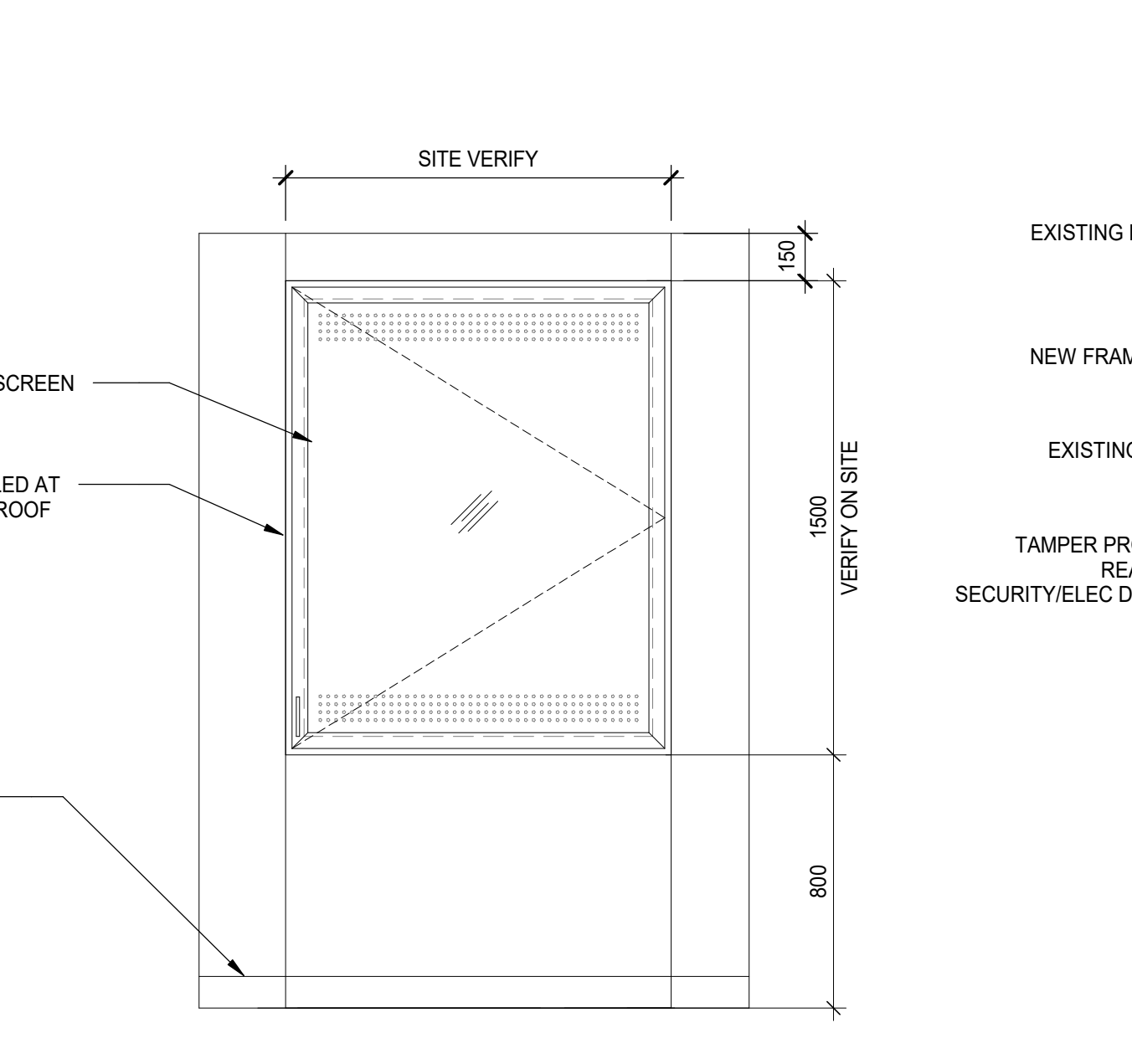
7 SHOWER -PATIENT WASHROOM ELEVATION
 SCALE: 1:20



3 WINDOW S2 - CORRIDOR ELEVATION
 SCALE: 1:20



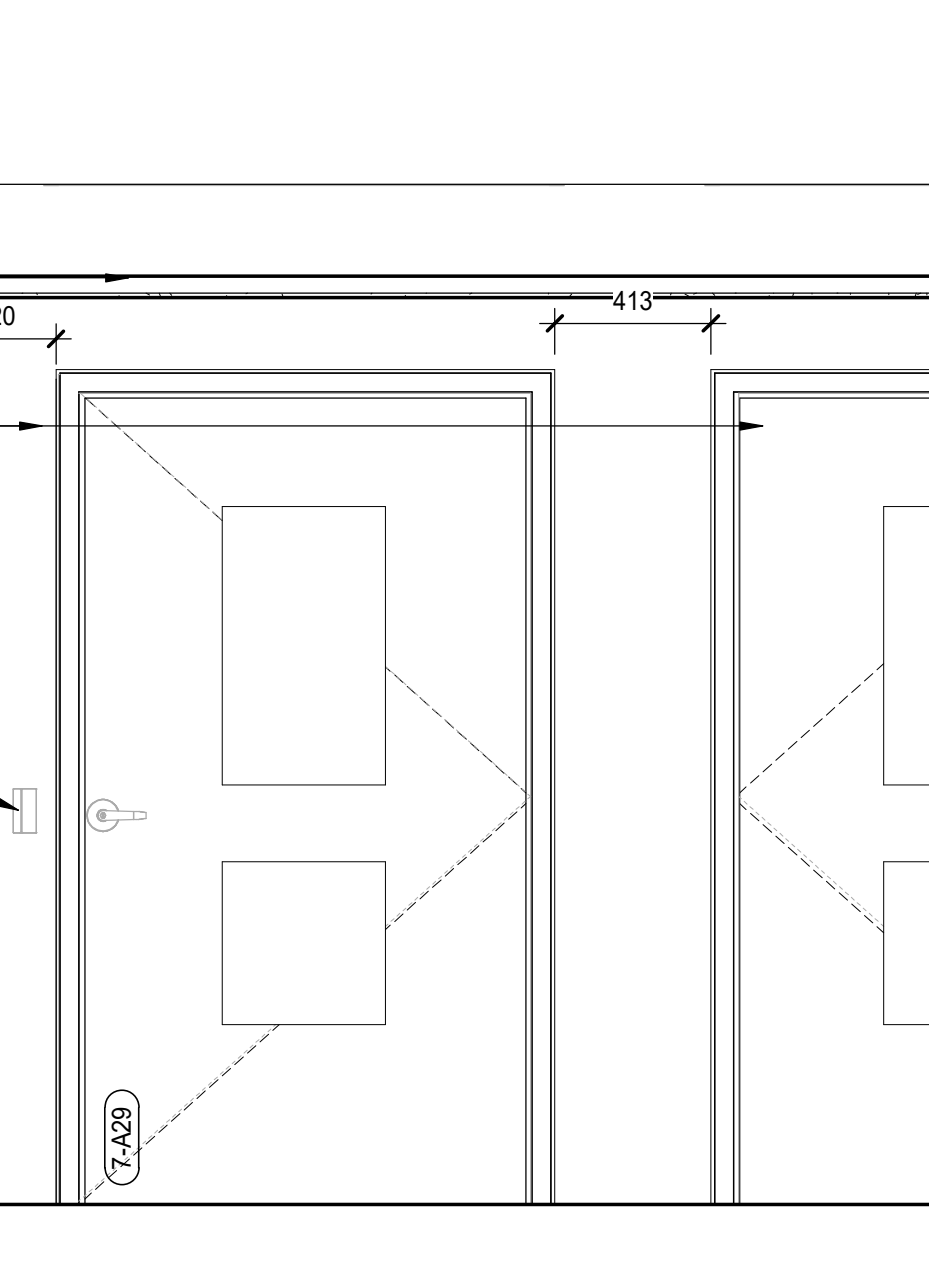
6 TYPICAL WINDOW S2 SECTION DETAIL AT CORRIDOR WINDOW
 SCALE: 1:10



2 WINDOW S1 - PATIENT ROOMS ELEVATION
 SCALE: 1:20



5 TYPICAL WINDOW S1 SECTION DETAIL
 SCALE: 1:10



1 INTERIOR ELEVATION - CORRIDOR
 SCALE: 1:20

