



**The Niagara Parks Commission
Agency of the Government of
Ontario since 1885**

ADDENDUM # 6

FOR

WEGO Transit and Fleet Operations Center Expansion

Request for Proposal No: RFP-22-2024-AD
Issue Date of Addendum: January 13, 2025
Proposal Submission Deadline: January 23, 2025 at 2:00 p.m. ET

ADDENDUM # 6

This RFP may only be amended or supplemented by an addendum. If The Niagara Parks Commission (“NPC”), for any reason, determines that it is necessary to provide additional information relating to this RFP, such information will be communicated to all Proponents by addenda by way of Bonfire. Each addendum shall form an integral part of this RFP.

NPC is issuing this Addendum to all potential Proponents to:

- advise them of the responses to the questions that were submitted by potential Proponents of the RFP, and/or;
- advise them of the clarifications/changes to this RFP.

Proponents are responsible for obtaining all addenda issued by the NPC.

Questions & Answers:

1. Is the intention to run the required ethernet cables (for new addition voice/data receptacles) from a patch panel at the incoming service location? Or is a fiber optic connection to the new 2-post network rack required? Please confirm any active network hardware will be supplied and installed by the owner.

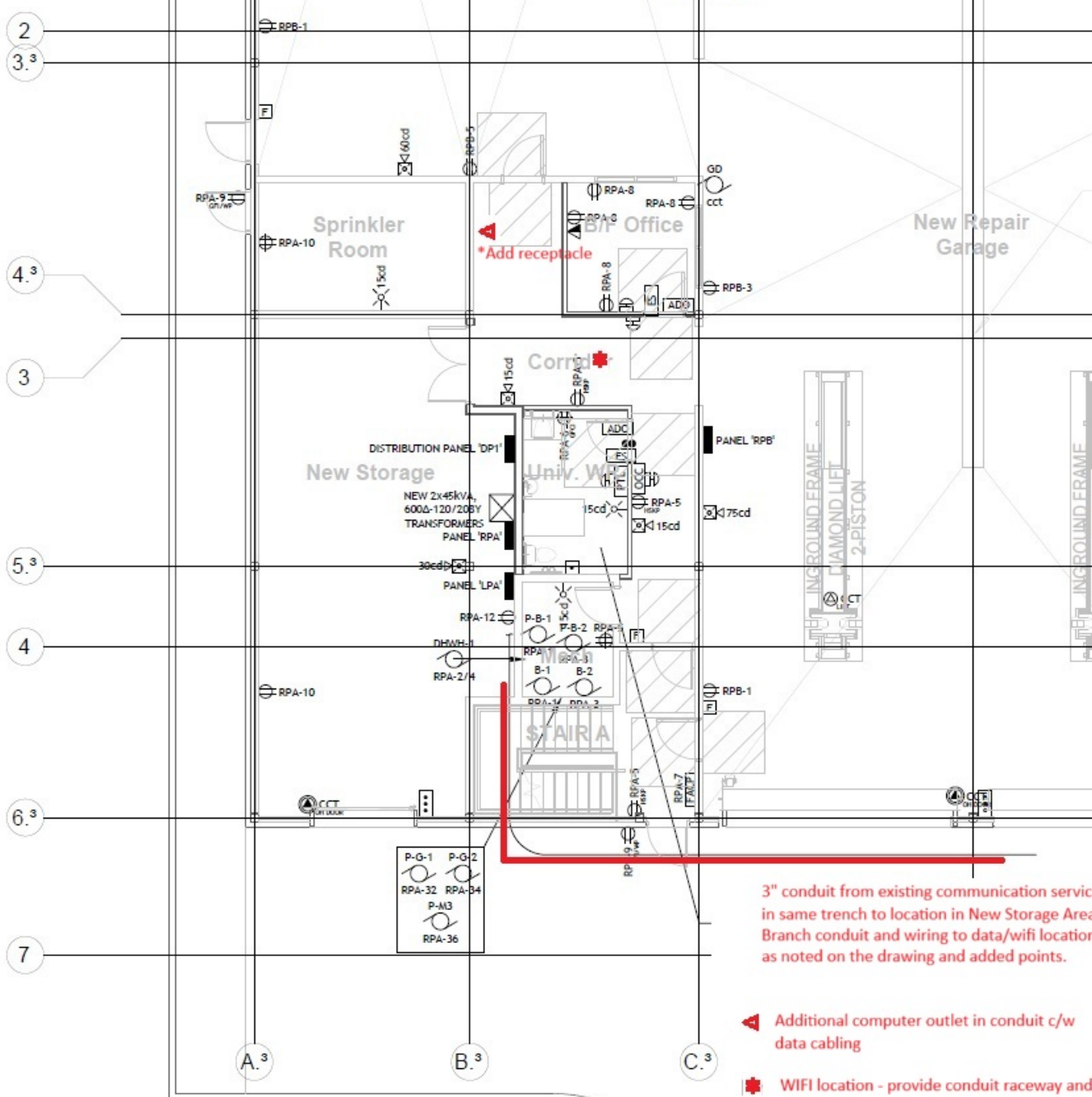
ANSWER: New (Cat 6a) ethernet cables are to be run from the existing communication service panel/rack in the existing garage in a new conduit run to the addition as noted in E300 to a location in the Storage Area as per the attached sketch to the locations on the drawings as well as the added points noted in the attached drawings.

Addenda are the only means of verifying, clarifying or changing any of the information contained in the RFP. Other than the RFP Coordinator, no employee or agent of NPC is authorized to change the content of this RFP and/or any addenda.

No communications are to be directed to anyone other than the RFP Coordinator.

The “RFP Coordinator” is Adam De Giuli

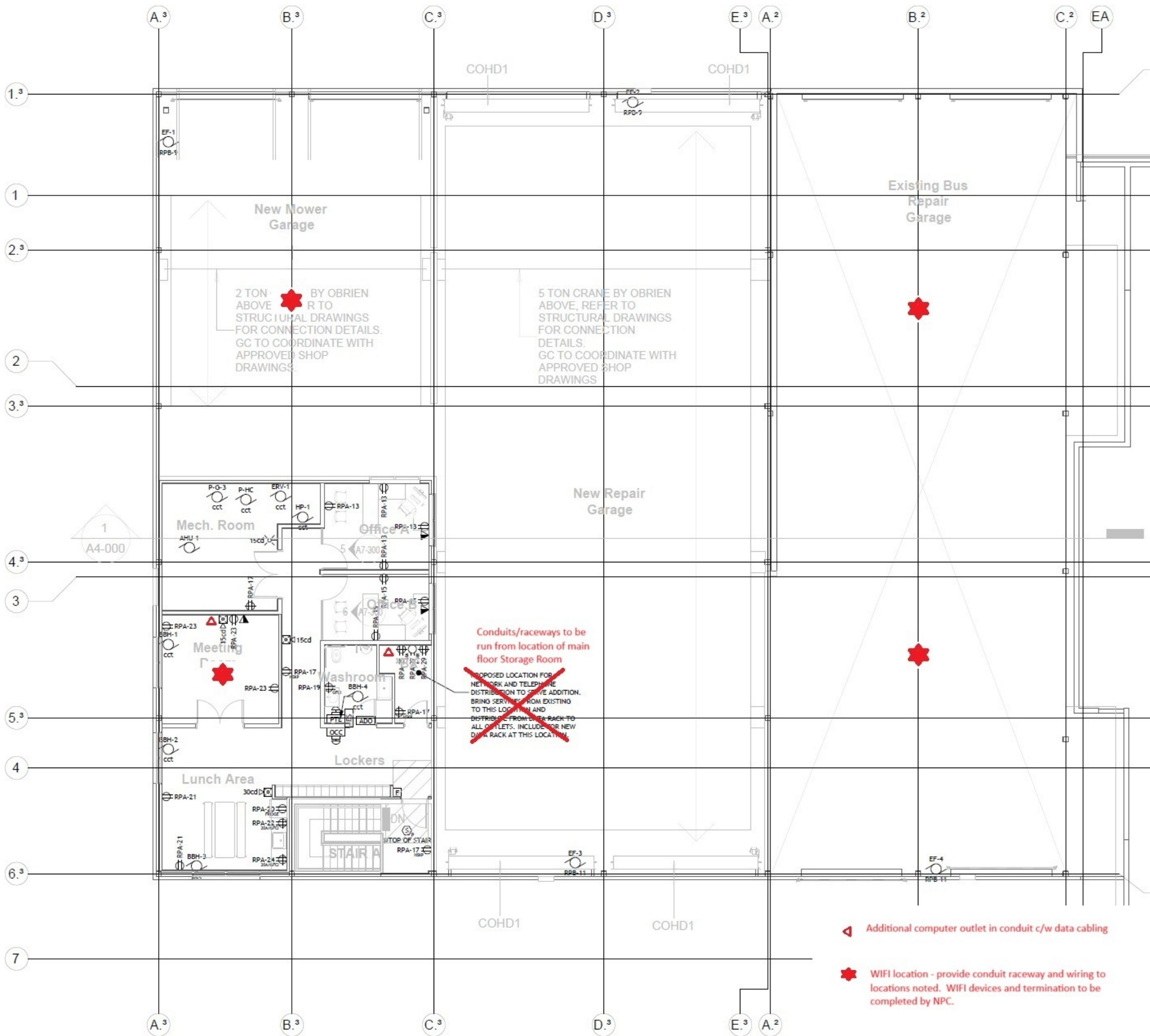
All questions regarding any errors, omissions or ambiguities, or to seek additional information must be submitted by Proponents via Bonfire’s Opportunity Vendor Discussions board before the Proponents’ Deadline for Questions. Do not submit questions to the e-mail address in Section 1.7 (RFP Coordinator)”.



3" conduit from existing communication service in same trench to location in New Storage Area. Branch conduit and wiring to data/wifi location as noted on the drawing and added points.

▲ Additional computer outlet in conduit c/w data cabling

■ WIFI location - provide conduit raceway and wiring to location noted. WIFI devices and termination to be completed by NPC



2 TON CRANE BY O'BRIEN ABOVE REFER TO STRUCTURAL DRAWINGS FOR CONNECTION DETAILS. GC TO COORDINATE WITH APPROVED SHOP DRAWINGS.

5 TON CRANE BY O'BRIEN ABOVE, REFER TO STRUCTURAL DRAWINGS FOR CONNECTION DETAILS. GC TO COORDINATE WITH APPROVED SHOP DRAWINGS.

Conduits/raceways to be run from location of main floor Storage Room

~~PROPOSED LOCATION FOR NETWORK AND TELEPHONE DISTRIBUTION TO BE REMOVED. BRING SERVICES FROM EXISTING TO THIS LOCATION AND DISTRIBUTE FROM HERE BACK TO ALL OUTLETS. INCLUDE FOR NEW DATA RACK AT THIS LOCATION.~~

▲ Additional computer outlet in conduit c/w data cabling

★ WiFi location - provide conduit raceway and wiring to locations noted. WiFi devices and termination to be completed by NPC.