

## ADDENDUM

---

PROJECT NAME:     **Robarts 5th Floor MDL Renovation**

---

COMPANY:     **Superkül Architects**

---

ATTENTION:   **William Elsworthy**

---

PROJECT NO.:   **08086.009.E.001**

DATE:   **2024-11-25**

---

ADDENDUM NO.:   **E-04**

ISSUED BY:     **Komal Bharti**

---

The following amendments are hereby made as part of the Contract Documents. The following revisions and/or additions shall be made to contract documents and the cost shall be included in the Tender Price.

---

### **1.0         DRAWINGS**

#### **1.1         Refer to TE-0.3 ELECTRICAL DETAILS (not included)**

- 1.1.1     Existing 416V distribution panels: 006-NDP-05-04-AA, 006-NDP-05-04-BA, and 006-NDP-05-04-CA, shall be maintained as-is c/w all existing disconnect switches as part of the base bid price. Revise single line diagram detail 1/TE-0.3 to suit.
- 1.1.2     Provide one (1) 30A/30AF, 416V disconnect switch on each existing 416V distribution panel for normal lighting power, as shown.
- 1.1.3     Provide one (1) 30A/15AF, 416V disconnect switch on each existing 416V distribution panel for voltage reference, as shown.
- 1.1.4     Provide alternate price AP-1, as shown.
- 1.1.5     Replace existing 416V emergency lighting panels: 006-ELP-05-04-FA, 006-ELP-05-04-FB, and 006-ELP-05-04-FC with new, as shown.
- 1.1.6     Clarify naming of 208V emergency lighting panels on details TE-0.3/2,3,4, as shown.
- 1.1.7     Remove bus plug requirement, revise notes on details TE-0.3/2,3,4, and renumber as shown.
- 1.1.8     Remove note SP-2 and associated photo reference, as shown.

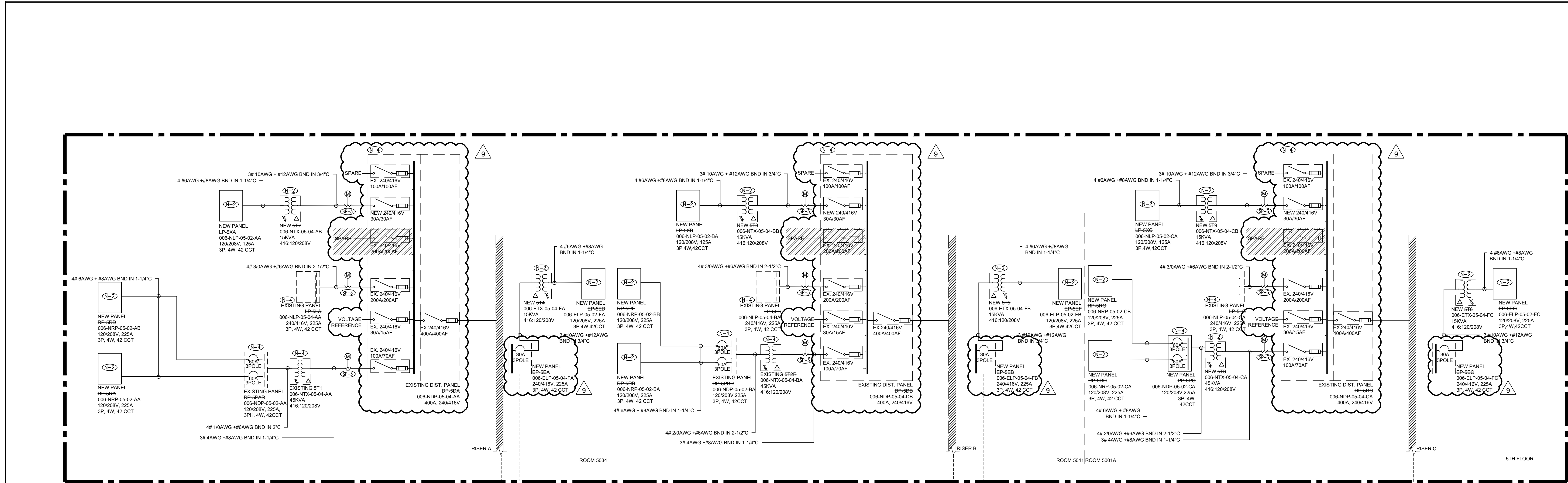
#### **1.2         Refer to TE-0.7 ELECTRICAL DETAILS (not included)**

- 1.2.1     Provide schedule for new panels 006-ELP-05-04-FA, 006-ELP-05-04-Fb, and 006-ELP-05-04-FC.
- 1.2.2     Revise schedule name for panels 006-NLP-05-04-AA, 006-NLP-05-04-BA, and 006-NLP-05-04-CA from 'new' to 'existing', as shown.

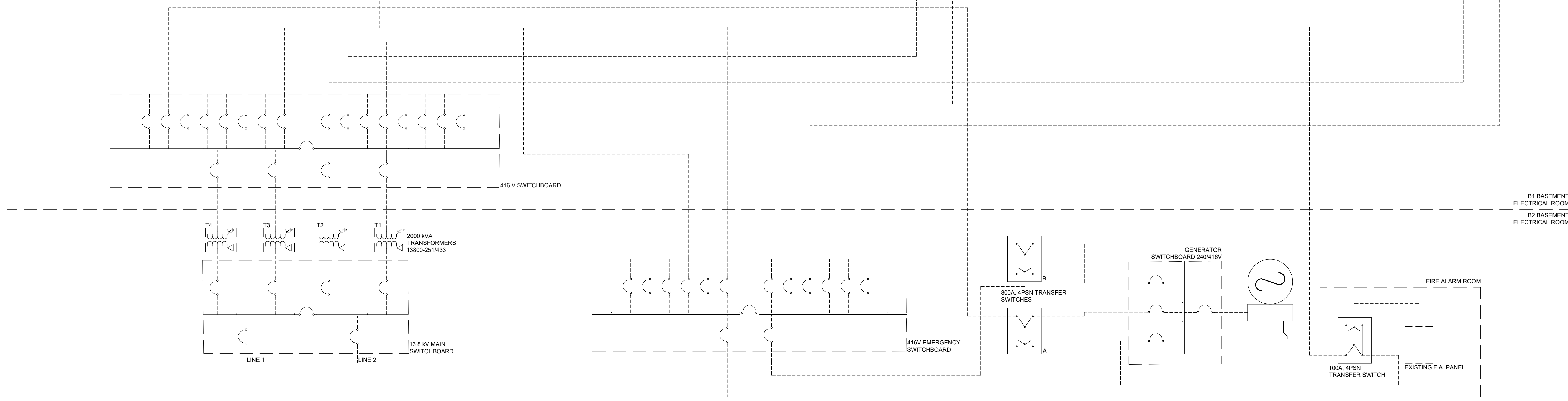
### **2.0         Clarification**

- 2.1.1     Client Request.

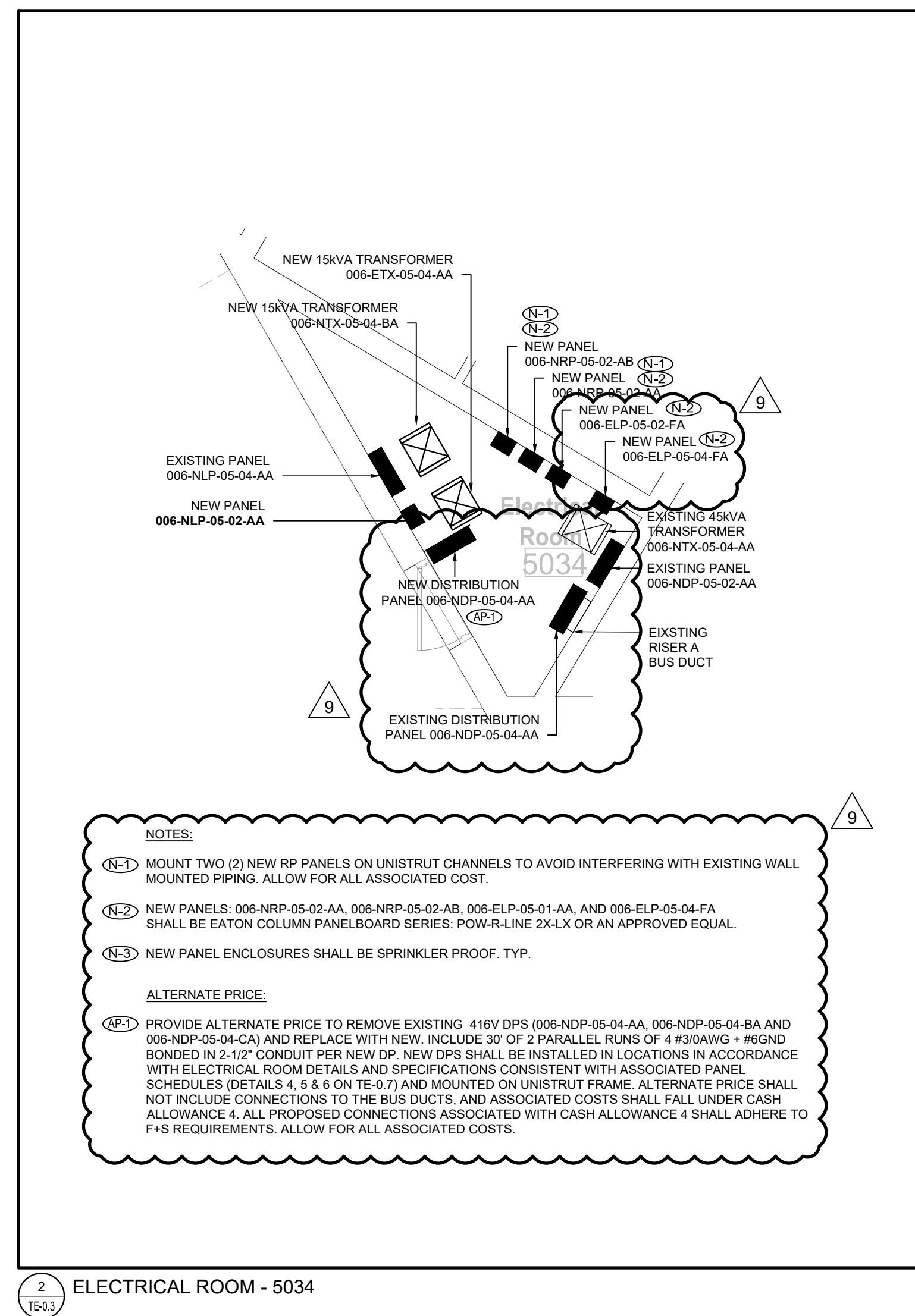
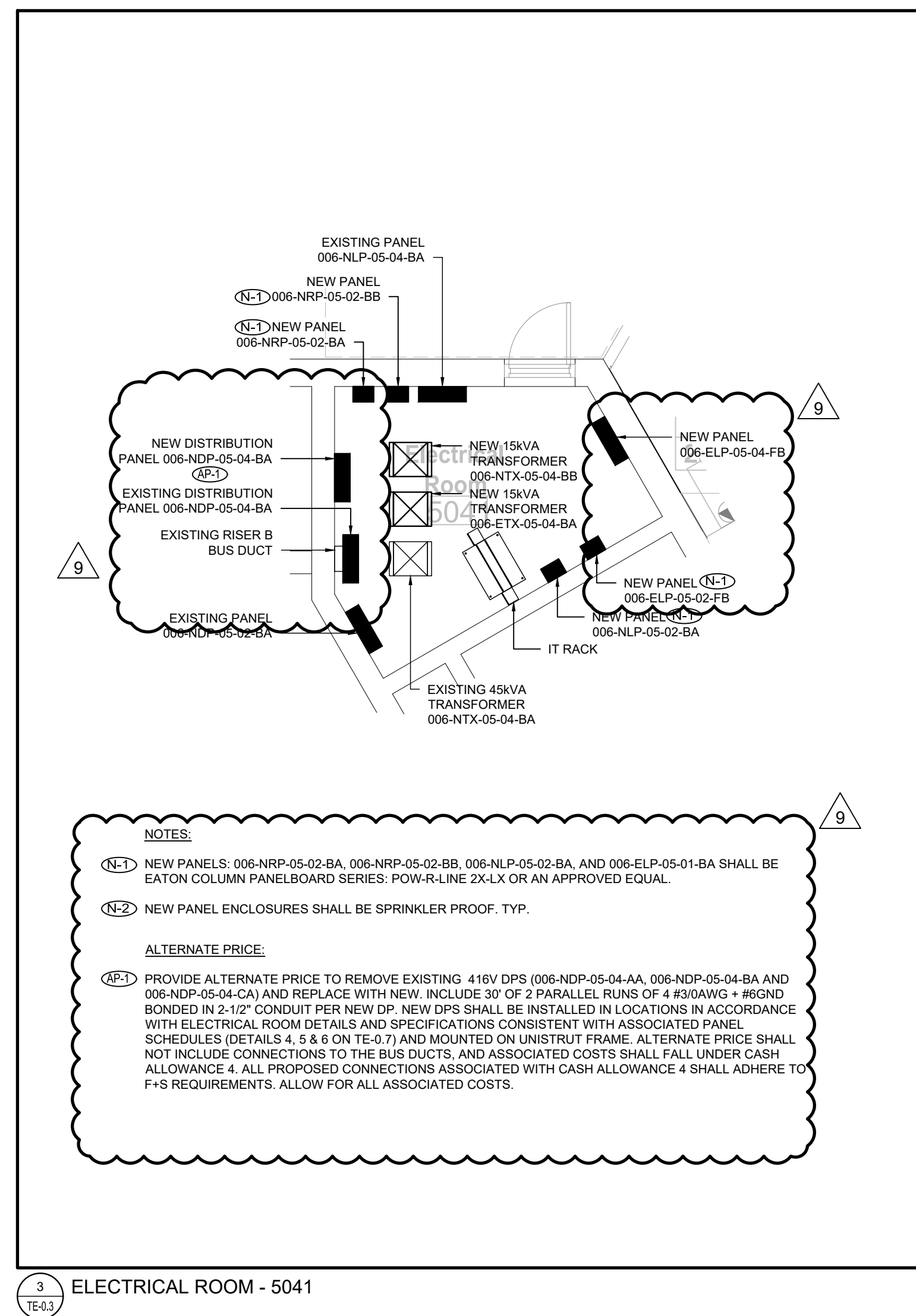
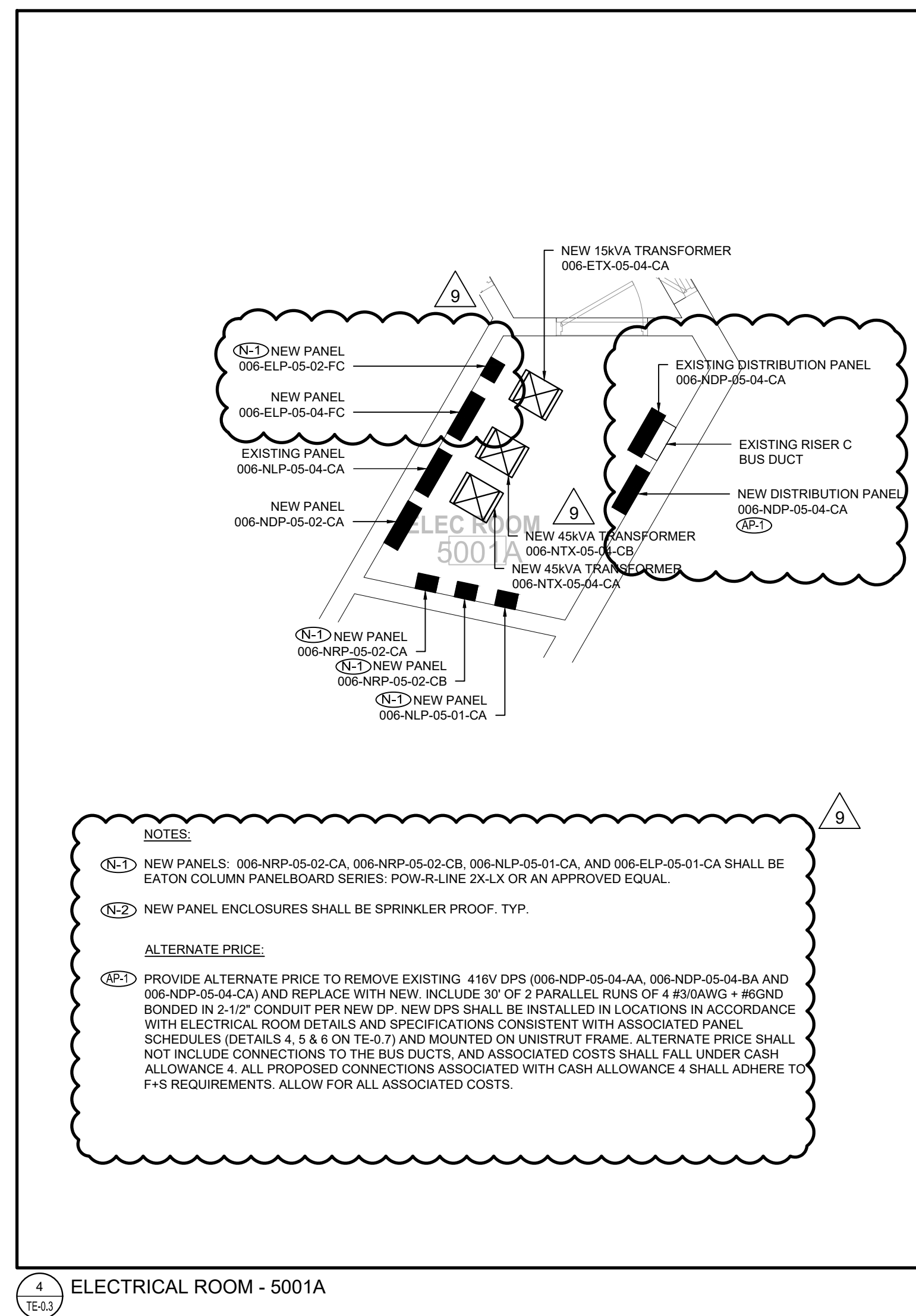
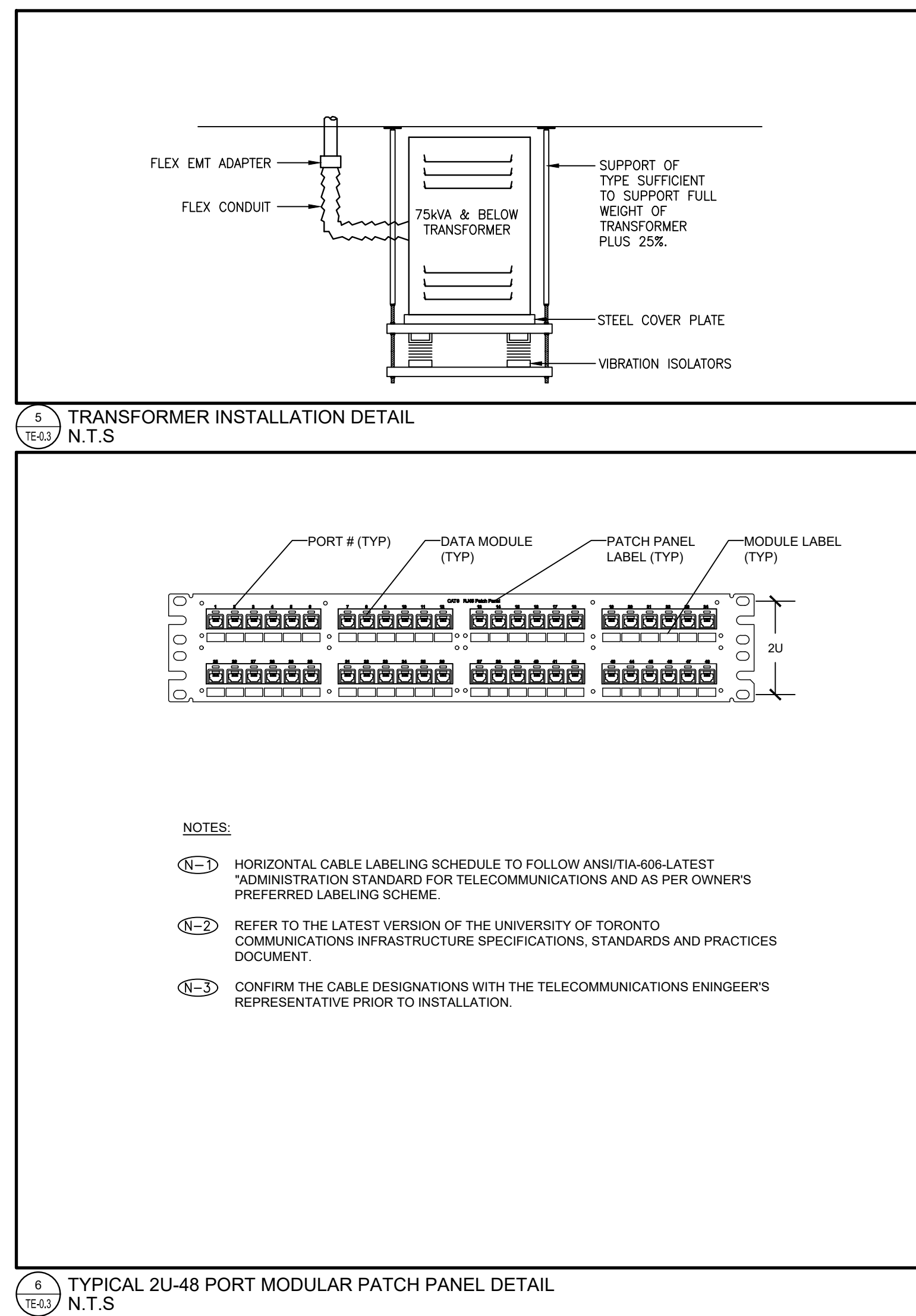
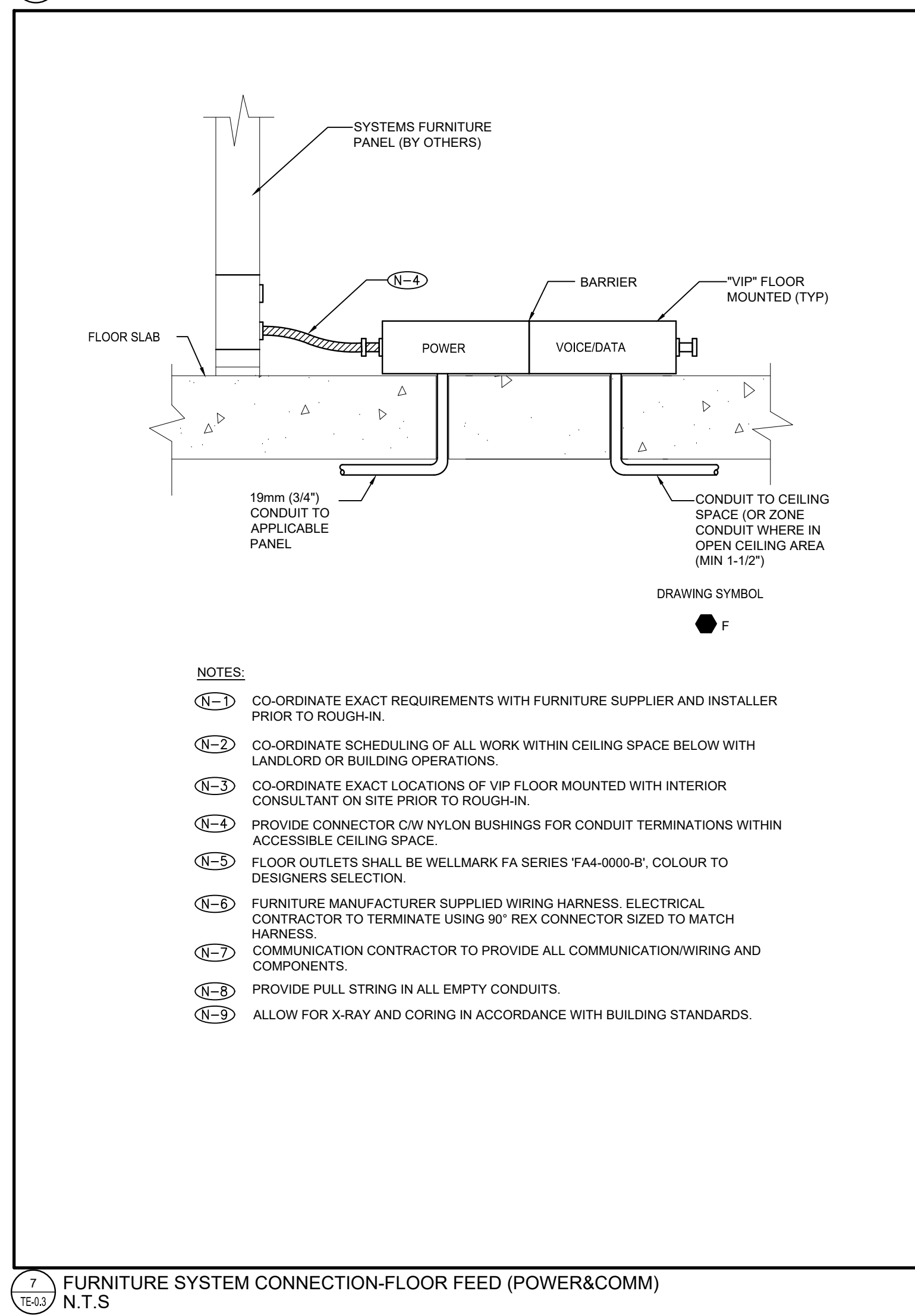
END OF ELECTRICAL ADDENDUM



SCOPE OF WORK



1 SINGLE LINE DIAGRAM  
N.T.S.



LEGEND
— NEW
- - - EXISTING
DEMOLITION

- NOTES:
- (N-1) EQUIPMENT SHOW FOR REFERENCE PURPOSES ONLY. EQUIPMENT IS EXISTING TO REMAIN UNLESS NOTED OTHERWISE.
  - (N-2) NEW PANELS/TRANSFORMERS TO REPLACE EXISTING IN SAME LOCATIONS. ALLOW FOR ALL ASSOCIATED COST TO REMOVE EXISTING PANELS/TRANSFORMERS AND ALL ASSOCIATED CONDUIT/WIRING AS A PART OF THIS SCOPE.
  - (N-3) PROVIDE PRELIMINARY POWER SYSTEMS STUDY ALONG WITH DISTRIBUTION SHOP DRAWINGS. STUDY TO BE UPDATED AFTER FINAL INSTALLATION. REFER TO ELECTRICAL SPECIFICATIONS FOR ADDITIONAL DETAILS.
  - (N-4) EXISTING EQUIPMENT TO BE PROVIDED WITH NEW LAMACOD LABEL REFLECTING REVISED NAMING CONVENTION NOTE.
  - (N-5) NOT USED.
  - (N-6) EXTEND/REWORK EXISTING WIRING AND CONDUIT FOR ALL EXISTING BRANCH CIRCUITS ON NEW PANELS TO ACCOMMODATE NEW PANEL LOCATIONS: TYP.
- SEPARATE PRICE:
- (N-7) NOT USED.
  - (N-8) PROVIDE NEW SUBMETERING COMPLETE WITH ALL REQUIRED P.T.S AND C.T.S. PROVIDE ALL PROGRAMMING TO INCORPORATE NEW METERING POINTS. COORDINATE FINAL REQUIREMENTS WITH SCHNEIDER REPRESENTATIVE CHRIS SCALA (CHRIS@LANGFORD-ASSOC.COM, 416-304-4735).
- ALTERNATE PRICE:
- (N-9) PROVIDE ALTERNATE PRICE TO REMOVE EXISTING 416V DPS (006-NDP-05-04-AA, 006-NDP-05-04-BA AND 006-NDP-05-04-CA) AND REPLACE WITH NEW, INCLUDE 30' OF 2 PARALLEL RUNS OF 4 #3AWG + BOND BONDED IN 2-1/2" CONDUIT PER NEW DP. NEW DPS SHALL BE INSTALLED IN LOCATIONS IN ACCORDANCE WITH ELECTRICAL ROOM DETAILS AND SPECIFICATIONS CONSISTENT WITH ASSOCIATED PANEL SCHEDULES (DETAILS 4, 5 & 6 ON TIE 7) AND MOUNTED ON UNISTRUT FRAME. ALTERNATE PRICE SHALL NOT INCLUDE CONNECTIONS TO THE BUS DUCTS, AND ASSOCIATED COSTS SHALL FALL UNDER CASH ALLOWANCE 4. ALL PROPOSED CONNECTIONS ASSOCIATED WITH CASH ALLOWANCE 4 SHALL ADHERE TO F-5 REQUIREMENTS. ALLOW FOR ALL ASSOCIATED COSTS.

Copyright. This design and drawings are the exclusive property of the Consultant and cannot be used for any purpose without the written consent of the Consultant. This drawing is not to be used for construction until issued for that purpose by the Consultant.

Prior to commencement of the Work the contractor shall verify all drawing dimensions, datum, and levels with the Contract documents and with the conditions on site; ascertain and discrepancies between the site and the contract documents, and bring these items to the attention of the consultant for clarification.

superk

COPYRIGHT IN THIS ELECTRONIC DOCUMENT BELONGS TO SMITH AND ANDERSEN. THIS ELECTRONIC DOCUMENT MAY NOT BE FORWARDED TO OTHERS, TRANSMITTED, DOWNLOADED OR REPRODUCED IN ANY FORMAT, WHETHER PRINT OR ELECTRONIC, WITHOUT THE EXPRESS, WRITTEN PERMISSION OF THE COPYRIGHT OWNER. USE OF THIS ELECTRONIC DOCUMENT IS AT THE USER'S OWN RISK. THE USER SHALL INDEMNIFY AND SAVE HARMLESS THE ARCHITECT, HIS/HER EMPLOYEES, AGENTS AND CONSULTANTS FROM AND AGAINST ALL CLAIMS, LOSSES, DAMAGES, COSTS AND EXPENSES (INCLUDING LEGAL FEES), DAMAGES OR RECOVERIES (INCLUDING ANY AMOUNTS PAID IN SETTLEMENT) ARISING BY REASON OF, CAUSED, OR ALLEGED TO BE CAUSED, BY THE USER'S RELIANCE ON THIS ELECTRONIC DOCUMENT.

9	2024-11-20	ISSUED FOR ADD-ON
8	2024-11-14	ISSUED FOR ADD-ON
7	2024-09-27	ISSUED FOR TENDER
6	2024-08-08	ISSUED FOR PERMITTING
5	2024-08-08	ISSUED FOR PERMITS
4	2024-04-26	ISSUED FOR BIDDING
3	2024-12-12	ISSUED FOR REVIEW
2	2024-12-12	ISSUED FOR REVIEW
1	2024-04-04	ISSUED FOR DESIGN
No.	Date	Issue/Revision

PROJECT CONTACT
NAME: Greg Zapp
TEL: 647 288 5479
Email: Greg.Zapp@smithandanderson.com

THIS DRAWING SHALL BE READ IN CONJUNCTION WITH ELECTRICAL SPECIFICATION SUBMITTED FOR THIS PROJECT.

Smith + Andersen
1109 - 100 Bloor Street East, Toronto, ON M5S 1A5 416 497 1101 • 416 497 1102
No. Date Issue/Revision

Robarts 5th Floor MDL  
Renovation

Title:  
ELECTRICAL DETAILS

Project: No.08086.000 MEAYD Scale: AS NOTED  
Drawing No.

TE-0.3

BLDG # PANEL TAG DATE MODIFIED 25/10/2024											
CONNECTED LOAD (W)	DEMAND FACTOR	TOTAL DEMAND	DESCRIPTION (Item, Room Number(s))	BKR (A)	CT	BKR (B)	DESCRIPTION (Item, Room Number(s))	CONNECTED LOAD (W)	DEMAND FACTOR	TOTAL DEMAND	
1			EM.LTG.5TH FLOOR 1600W	15	1A	2	15	EM.LTG.6TH FLOOR 1700W			1
1			EM.LTG.5TH FLOOR 1600W	15	3A	4	20	TRANS ST4			1
1			EM.LTG.4TH FLOOR 1600W	15	5C	6	2P				1
1			SPARE	15	7A	8	15	SPACE			1
1			SPARE	15	9B	10		SPACE			1
1			SPARE	15	11C	12		SPACE			1
1			SPARE	15	13A	14		SPACE			1
1			SPARE	15	15B	16		SPACE			1
1			006-ELP-05-04-FA	30	17C	18		SPACE			1
1			3P	15A	20			SPACE			1
1			SPARE	15	21B	22		SPACE			1
1			SPARE	15	23C	24		SPACE			1
BLDG: FLOOR: ROOM: NEW TAG:											
RATINGS: 25SA 1 240X16V 3 PHASE 4 WIRE S.C.: 25A											
FED. FROM: PANEL TAG: BLDG # ROOM # BREAKER SIZE FEEDER SIZE:											

10 NEW PANEL 006-ELP-05-04-FA  
N.T.S.

BLDG # PANEL TAG DATE MODIFIED 25/10/2024											
CONNECTED LOAD (W)	DEMAND FACTOR	TOTAL DEMAND	DESCRIPTION (Item, Room Number(s))	BKR (A)	CT	BKR (B)	DESCRIPTION (Item, Room Number(s))	CONNECTED LOAD (W)	DEMAND FACTOR	TOTAL DEMAND	
			EXT.LTG.5TH FLOOR 500W	15	1A	2	15	EM.LTG.4TH FLOOR 800W			1
1			EXT.LTG.4TH FLOOR 500W	15	3A	4		EXT.LTG.4TH FLOOR 400W			1
1			1 RECEPT 4TH FLOOR ROOM46	15	5C	6		1 RECEPT			1
1			1 RECEPT 5TH FLOOR ROOM54	15	7A	8	20	SPARE			1
1			SPARE	15	9B	10	2P				1
1			SPARE	15	11C	12		SPACE			1
1			SPARE	15	13A	14		SPACE			1
1			SPARE	15	15B	16		SPACE			1
1			006-ELP-05-04-FB	30	17C	18		SPACE			1
1			3P	15A	20			SPACE			1
1			SPARE	15	21B	22		SPACE			1
BLDG: FLOOR: ROOM: NEW TAG:											
RATINGS: 25SA 1 240X16V 3 PHASE 4 WIRE S.C.: 25A											
FED. FROM: PANEL TAG: BLDG # ROOM # BREAKER SIZE FEEDER SIZE:											

11 NEW PANEL 006-ELP-05-04-FB  
N.T.S.

BLDG # PANEL TAG DATE MODIFIED 25/10/2024											
CONNECTED LOAD (W)	DEMAND FACTOR	TOTAL DEMAND	DESCRIPTION (Item, Room Number(s))	BKR (A)	CT	BKR (B)	DESCRIPTION (Item, Room Number(s))	CONNECTED LOAD (W)	DEMAND FACTOR	TOTAL DEMAND	
1			EM.LTG.5TH FLOOR 1300W	15	1A	2	15	EM.LTG.6TH FLOOR 1600W			1
1			EM.LTG.5TH FLOOR 1600W	15	3A	4	20	TRANS ST5			1
1			EM.LTG.4TH FLOOR 1600W	15	5C	6	2P				1
1			SPARE	15	7A	8	15	SPACE			1
1			SPARE	15	9B	10		SPACE			1
1			SPARE	15	11C	12		SPACE			1
1			SPARE	15	13A	14		SPACE			1
1			SPARE	15	15B	16		SPACE			1
1			006-ELP-05-04-FC	30	17C	18		SPACE			1
1			3P	15A	20			SPACE			1
1			SPARE	15	21B	22		SPACE			1
BLDG: FLOOR: ROOM: NEW TAG:											
RATINGS: 25SA 1 240X16V 3 PHASE 4 WIRE S.C.: 25A											
FED. FROM: PANEL TAG: BLDG # ROOM # BREAKER SIZE FEEDER SIZE:											

12 NEW PANEL 006-ELP-05-04-FC  
N.T.S.

BLDG # PANEL TAG DATE MODIFIED 25/10/2024											
CONNECTED LOAD (W)	DEMAND FACTOR	TOTAL DEMAND	DESCRIPTION (Item, Room Number(s))	BKR (A)	CT	BKR (B)	DESCRIPTION (Item, Room Number(s))	CONNECTED LOAD (W)	DEMAND FACTOR	TOTAL DEMAND	
			LIGHTING 1800W ROOM44	15	1A	2	15	LIGHTING 2400W ROOM31, 32			0
0			LIGHTING 2600W ROOM24	15	3A	4	15	LIGHTING 2200W ROOM31			0
0			LIGHTING 1600W ROOM44	15	5C	6	15	LTG. 2000W ROOM1, 34			0
0			BOOK STACK LIGHTING ROOM44 2200W	15	7A	8	15	LTG. 1900W RM44, 45, 53, 52			0
0			BOOK STACK LIGHTING ROOM44 1800W	15	9B	10	15	LIGHTING 1700W ROOM44			0
0			BOOK STACK LIGHTING ROOM44 2600W	15	11C	12	15	SPARE			0
0			LIGHTS APXEX EXTERIOR	15	13A	14	15	SPARE			0
0			SPARE	15	15B	16	15	SPARE			0
0			SPARE	15	17C	18	15	SPARE			0
0			SPARE	15	19A	20	15	SPARE			0
0			SPACE	21B	22			SPACE			0
0			SPACE	23C	24			SPACE			0
0			SPACE	25A	26			SPACE			0
0			SPACE	27B	28			SPACE			0
0			SPACE	29C	30			SPACE			0
0			SPACE	31A	32			SPACE			0
0			SPACE	33B	34			SPACE			0
0			SPACE	35C	36			SPACE			0
0			SPACE	37A	38			SPACE			0
0			SPACE	39B	40			SPACE			0
0			SPACE	41C	42			SPACE			0
BLDG: FLOOR: ROOM: NEW TAG:											
RATINGS: 25SA 1 240X16V 3 PHASE 4 WIRE S.C.: 55A											
FED. FROM: PANEL TAG: BLDG # ROOM # BREAKER SIZE FEEDER SIZE:											

13 EXISTING PANEL 006-NLP-05-04-AA  
N.T.S.

BLDG # PANEL TAG DATE MODIFIED 25/10/2024											
CONNECTED LOAD (W)	DEMAND FACTOR	TOTAL DEMAND	DESCRIPTION (Item, Room Number(s))	BKR (A)	CT	BKR (B)	DESCRIPTION (Item, Room Number(s))	CONNECTED LOAD (W)	DEMAND FACTOR	TOTAL DEMAND	
0			LTS. 1800W ROOM44	15	1A	2	15	LTS. 3000W ROOM44			0
0			LTS. 1900W ROOM44	15	3A	4	15	LTS. 1100W ROOM45			0
0			LTS. 1200W RM43, 44	15	5C	6	15	LTS. 1700W ROOM45			0
0			BOOK STACK LTG RM44, 2200 W	15	7A	8	15	BOOK STACK LTG RM44, 2200W			0
0			BOOK STACK LTG RM44, 2400 W	15	9B	10	15	BOOK STACK LTG RM44, 2400 W			0
0			BOOK STACK LTG RM44, 2200 W	15	11C	12	15	BOOK STACK LTG RM44, 2200 W			0
0			BOOK STACK LTG RM44, 2200 W	15	13A	14	15	BOOK STACK LTG RM44, 2200 W			0
0			BOOK STACK LTG RM44, 2200 W	15	15B	16	15	BOOK STACK LTG RM44, 1800 W			0
0			SPARE	15	17C	18		SPARE			0
0			SPARE	15	19A	20	15	SPARE			0
0			SPARE	15	21B	22	15	SPARE			0
0			SPARE	15	23C	24	15	SPARE			0
0			SPARE	15	25A	26	15	SPARE			0
0			SPARE	15	27B	28	15	SPARE			0
0			SPACE	29C	30			SPACE			0
0			SPACE	31A	32			SPACE			0
0			SPACE	33B	34			SPACE			0
0			SPACE	35C	36			SPACE			0
0			SPACE	37A	38			SPACE			0
0			SPACE	39B	40			SPACE			0
0			SPACE	41C	42			SPACE			0
BLDG: FLOOR: ROOM: NEW TAG:											
RATINGS: 25SA 1 240X16V 3 PHASE 4 WIRE S.C.: 55A											
FED. FROM: PANEL TAG: BLDG # ROOM # BREAKER SIZE FEEDER SIZE:											

14 EXISTING PANEL 006-NLP-05-04-BA  
N.T.S.

BLDG # PANEL TAG DATE MODIFIED 25/10/2024											
CONNECTED LOAD (W)	DEMAND FACTOR	TOTAL DEMAND	DESCRIPTION (Item, Room Number(s))	BKR (A)	CT	BKR (B)	DESCRIPTION (Item, Room Number(s))	CONNECTED LOAD (W)	DEMAND FACTOR	TOTAL DEMAND	
0			BOOK STACK LTG. RM 44 2200W	15	1A	2	15	LIGHTING 2200W ROOM31			0
0			BOOK STACK LTG. RM 44 2200W	15	3A	4	15	LIGHTING 2000W ROOM31			0
0			LTS. 1600W ROOM44	15	5C	6	15	LIGHTING 2000W ROOM31			0
0			LIGHTING 2000W ROOM32	15	7A	8	15	LIGHTING 2000W ROOM31			0
0			LIGHTING 2000W ROOM32	15	9B	10	15	LIGHTING 2000W ROOM31			0
0			LIGHTING 1800W ROOM31, 41	15	11C	12	15	LIGHTING 2400W ROOM31			0
0			LIGHTING 2200W ROOM31	15	13A	14	15	SPARE			0
0			LIGHTING 2200W ROOM44, 50, 33.55	15	15B	16	15	SPARE			0
0			SPARE	15	17C	18	15	SPARE			0
0			SPARE	15	19A	20	15	SPARE			0
0			SPARE	15	21B	22	15	SPARE			0
0			SPARE	15	23C	24	15	SPACE			0
0			SPACE	25A	26			SPACE			0
0			SPACE	27B	28			SPACE			0
0			SPACE	29C	30			SPACE			0
0			SPACE	31A	32			SPACE			0
0			SPACE	33B	34			SPACE			0
0			SPACE	35C	36			SPACE			0
0			SPACE	37A	38			SPACE			0
0			SPACE	39B	40			SPACE			0
0			SPACE	41C	42			SPACE			0
BLDG: FLOOR: ROOM: NEW TAG:											
RATINGS: 25SA 1 240X16V 3 PHASE 4 WIRE S.C.: 55A											
FED. FROM: PANEL TAG: BLDG # ROOM # BREAKER SIZE FEEDER SIZE:											

15 EXISTING PANEL 006-NLP-05-04-CA  
N.T.S.

BLDG #			PANEL TAG		006-NLP-05-04-AA			DATE MODIFIED: 7/11/2024		
CONNECTED LOAD (W)	DEMAND FACTOR	TOTAL DEMAND	DESCRIPTION (Item, Room Number(s))	BKR (A)	CT	BKR (B)	DESCRIPTION (Item, Room Number(s))	CONNECTED LOAD (W)	DEMAND FACTOR	TOTAL DEMAND
1				3B	1A	2	200			1
			006-NTP-05-04-AB	4	3B	A	↓	006-NLP-05-04-AA		
1				200	5C	B	3P			1
0				3P	7A	C	115			0
0			SPARE	A	11C	10	↓	VOLTAGE REFERENCE		1
0				A	11C	10	3P			0
0				200	13A	14	70			1
0			SPARE	4	15C	15	↓	006-NTP-05-04-AA		1
0				3P	17C	18	3P			1
0			SPACE	18A	20		SPACE			0
0			SPACE	21B	22		SPACE			0
0			SPACE	23C	24		SPACE			0
0			SPACE	25A	26		SPACE			0
0			SPACE	27A	28		SPACE			0
0			SPACE	29C	30		SPACE			0
0			SPACE	31A	32		SPACE			0
0			SPACE	33B	34		SPACE			0
0			SPACE	35C	36		SPACE			0
0			SPACE	37A	38		SPACE			0
0			SPACE	39A	40		SPACE			0
0			SPACE	41C	42		SPACE			0
BLDG#			FLOOR#		ROOM#		NEW TAG			
GATSUB#			400	240416	3 PHASE	4 WYRS	8 C.C.	100A		
FEEDER SIZE			PANEL TAG		BLDG #	ROOM #	FEEDER SIZE			
EED FROM:			006-NLP-05-04-AA		006	004	400A	3 PHASE L1, N, GND OF 48 3W/0-90V/0-90V BND W/ 2 PZCS		