

ADDENDUM

PROJECT NAME: Robarts 5th Floor MDL Renovation

COMPANY: Superkül Architects

ATTENTION: William Elsworthy

PROJECT NO.: 08086.009.E.001

DATE: 2024-11-29

ADDENDUM NO.: E-04 R1

ISSUED BY: Komal Bharti

The following amendments are hereby made as part of the Contract Documents. The following revisions and/or additions shall be made to contract documents and the cost shall be included in the Tender Price.

1.0 DRAWINGS

1.1 Refer to TE-0.3 ELECTRICAL DETAILS (not included)

- 1.1.1 Revise single line diagram TE-0.3/1, as shown.
- 1.1.2 Provide note N-7, as shown.
- 1.1.3 Replace existing 416V emergency lighting panels: 006-ELP-05-04-FA, 006-ELP-05-04-FB, and 006-ELP-05-04-FC with new, as shown.
- 1.1.4 Clarify naming of 208V emergency lighting panels on details TE-0.3/2,3,4, as shown.
- 1.1.5 Clarify mounting for new distribution panels within Electrical rooms and revise note N-1 on TE-0.3/2,3,4, as shown.
- 1.1.6 Remove bus plug requirement, revise notes on details TE-0.3/2,3,4, and renumber as shown. Associated disconnect is shown for reference only, as per N-7 on TE-0.3/1 this scope shall not be included in base price and will be covered in cash allowance 4.
- 1.1.7 Remove note SP-2 and associated photo reference, as shown.

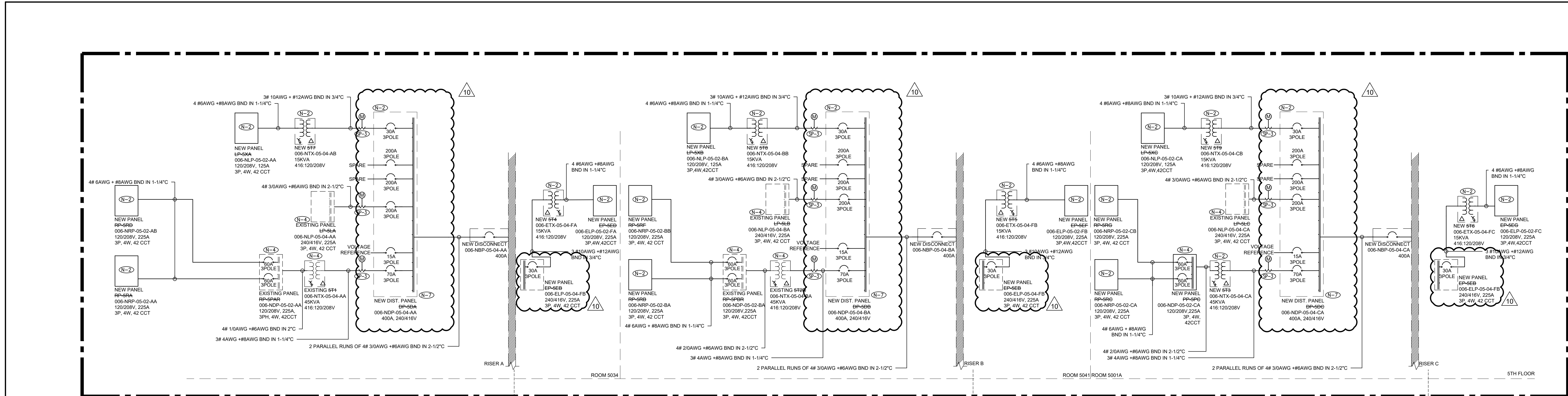
1.2 Refer to TE-0.7 ELECTRICAL DETAILS (not included)

- 1.2.1 Provide schedule for new panels 006-ELP-05-04-FA, 006-ELP-05-04-Fb, and 006-ELP-05-04-FC.
- 1.2.2 Revise schedule name for panels 006-NLP-05-04-AA, 006-NLP-05-04-BA, and 006-NLP-05-04-CA from 'new' to 'existing', as shown.

2.0 Clarification

- 2.1.1 Client Request.

END OF ELECTRICAL ADDENDUM



- LEGEND**
- NEW
 - EXISTING
 - DEMOLITION
- NOTES:**
- (N-1) EQUIPMENT SHOW FOR REFERENCE PURPOSES ONLY. EQUIPMENT IS EXISTING TO REMAIN UNLESS NOTED OTHERWISE.
 - (N-2) NEW PANELS/TRANSFORMERS TO REPLACE EXISTING IN SAME LOCATIONS. ALLOW FOR ALL ASSOCIATED COST TO REMOVE EXISTING PANELS/TRANSFORMERS AND ALL ASSOCIATED CONDUIT/WIRING AS A PART OF THIS SCOPE.
 - (N-3) PROVIDE PRELIMINARY POWER SYSTEMS STUDY ALONG WITH DISTRIBUTION SHOP DRAWINGS. STUDY TO BE UPDATED AFTER FINAL INSTALLATION. REFER TO ELECTRICAL SPECIFICATIONS FOR ADDITIONAL DETAILS.
 - (N-4) EXISTING EQUIPMENT TO BE PROVIDED WITH NEW LAMACOD LABEL REFLECTING REVISED NAMING CONVENTION NOTE.
 - (N-5) NOT USED.
 - (N-6) EXTEND/REMOVE EXISTING WIRING AND CONDUIT FOR ALL EXISTING BRANCH.
 - (N-7) NEW DPS SHALL BE INSTALLED MOUNTED IN LOCATIONS AS PER ELECTRICAL ROOM DETAILS 4, 5 & 6 ON T.E.0.7. BASE PRICE SHALL NOT INCLUDE CONNECTIONS TO THE BUS DUCT OR ASSOCIATED DISCONNECTS (006-NRP-05-04-AA, 006-NRP-05-04-BA AND 006-NRP-05-04-CA). ALL ASSOCIATED COSTS SHALL FALL UNDER CASH ALLOWANCE 4. ALL PROPOSED CONNECTIONS ASSOCIATED WITH CASH ALLOWANCE 4 SHALL ADHERE TO F-H REQUIREMENTS. ALLOW FOR ALL ASSOCIATED COSTS ASSOCIATED DISCONNECTS SHALL BE A CUSTOM BOX ENCOMPASSING A MOULDED CASE BREAKER OR A FUSED DISCONNECT. ANY PROPOSED OPTION SHALL BE SUBMITTED TO F-H FOR REVIEW PRIOR TO ORDERING.
- SEPARATE PRICE:**
- (S-1) NOT USED.
 - (S-2) PROVIDE NEW SUBMETERING COMPLETE WITH ALL REQUIRED PITS AND CTS. PROVIDE ALL PROGRAMMING TO INCORPORATE NEW METERING POINTS. COORDINATE FINAL REQUIREMENTS WITH SCHNEIDER REPRESENTATIVE CHRIS SCALA (CHRIS@AMFORD-AMSC.COM 416-206-4700).

Copyright. This design and drawings are the exclusive property of the Consultant and cannot be used for any purpose without the written consent of the Consultant. This drawing is not to be used for construction until issued for that purpose by the Consultant.

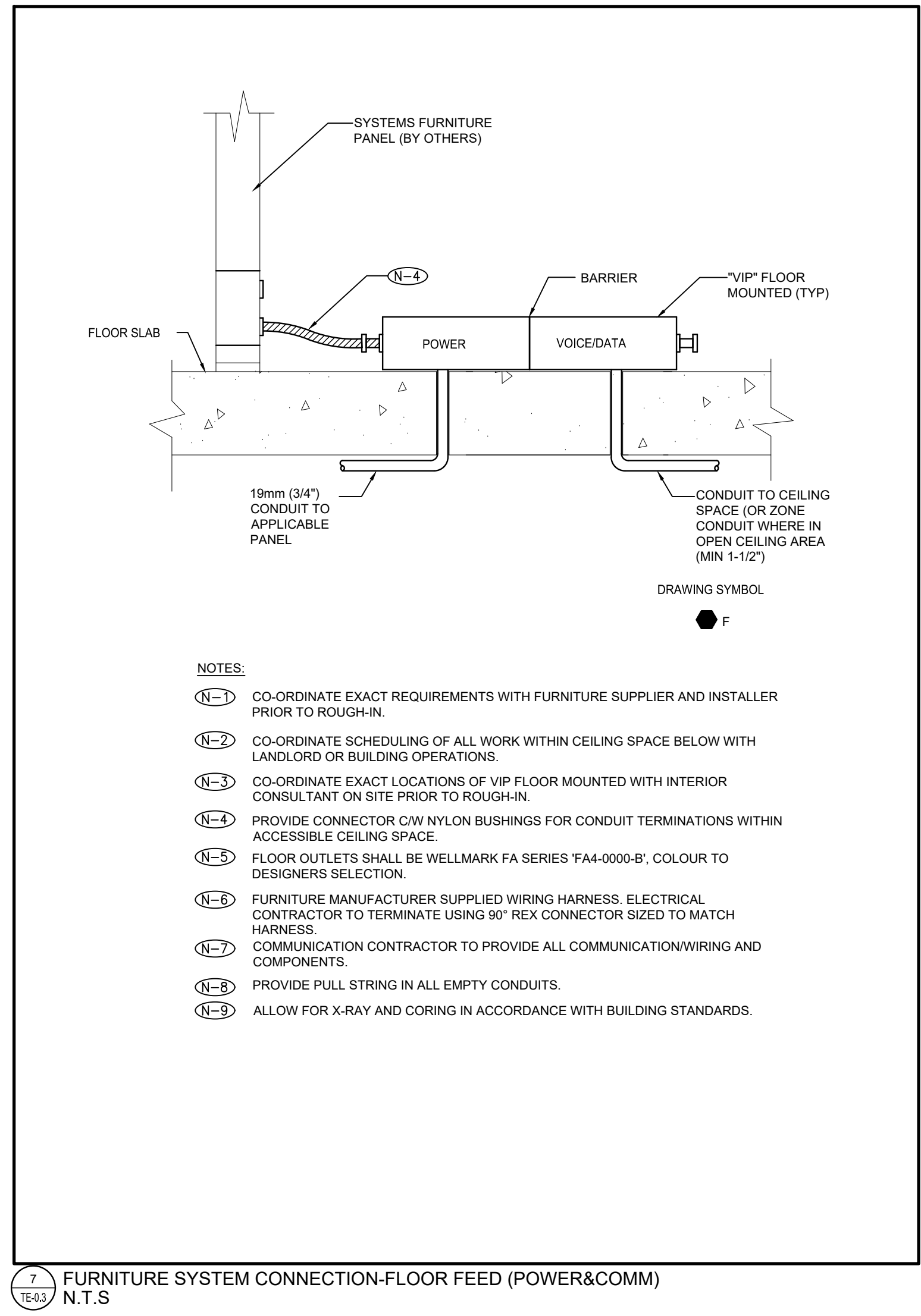
Prior to commencement of the Work the contractor shall verify all drawing dimensions, datum, and levels with the Contract documents and with the conditions on site; ascertain and discrepancies between the site and the contract documents, and bring these items to the attention of the consultant for clarification.

superk

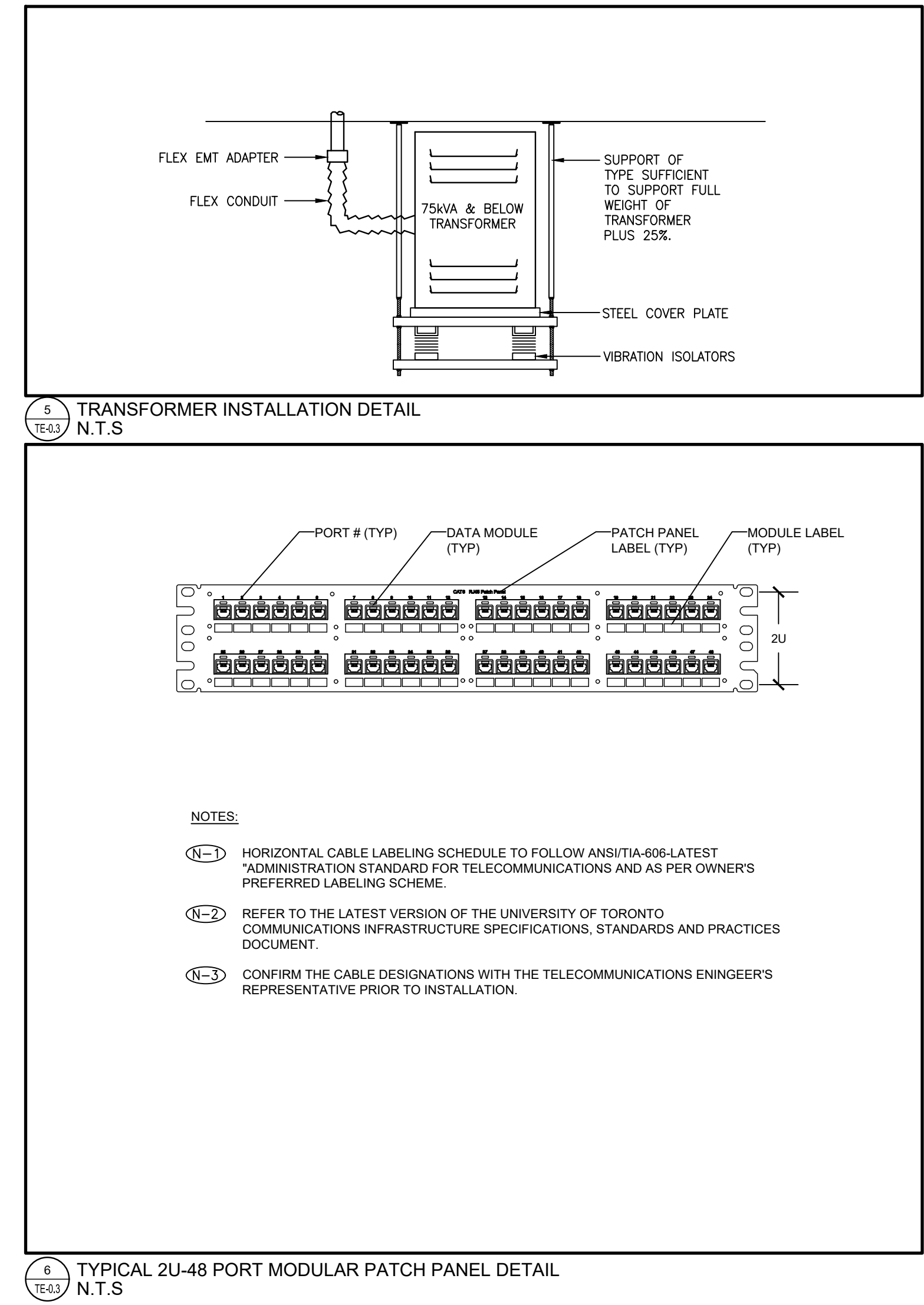
COPYRIGHT IN THIS ELECTRONIC DOCUMENT BELONGS TO SMITH AND ANDERSEN. THIS ELECTRONIC DOCUMENT MAY NOT BE FORWARDED TO OTHERS, TRANSMITTED, DOWNLOADED OR REPRODUCED IN ANY FORMAT, WHETHER PRINT OR ELECTRONIC, WITHOUT THE EXPRESS WRITTEN PERMISSION OF THE COPYRIGHT OWNER. USE OF THIS ELECTRONIC DOCUMENT IS AT THE USER'S OWN RISK. THE USER SHALL INDEMNIFY AND SAVE HARMLESS THE ARCHITECT, HIS/HER EMPLOYEES, AGENTS AND CONSULTANTS FROM AND AGAINST ALL CLAIMS, LOSSES, DAMAGES, COSTS AND EXPENSES (INCLUDING LEGAL FEES), DAMAGES OR RECOVERIES (INCLUDING ANY AMOUNTS PAID IN SETTLEMENT) ARISING BY REASON OF, CAUSED, OR ALLEGED TO BE CAUSED, BY THE USER'S RELIANCE ON THIS ELECTRONIC DOCUMENT.

SCOPE OF WORK

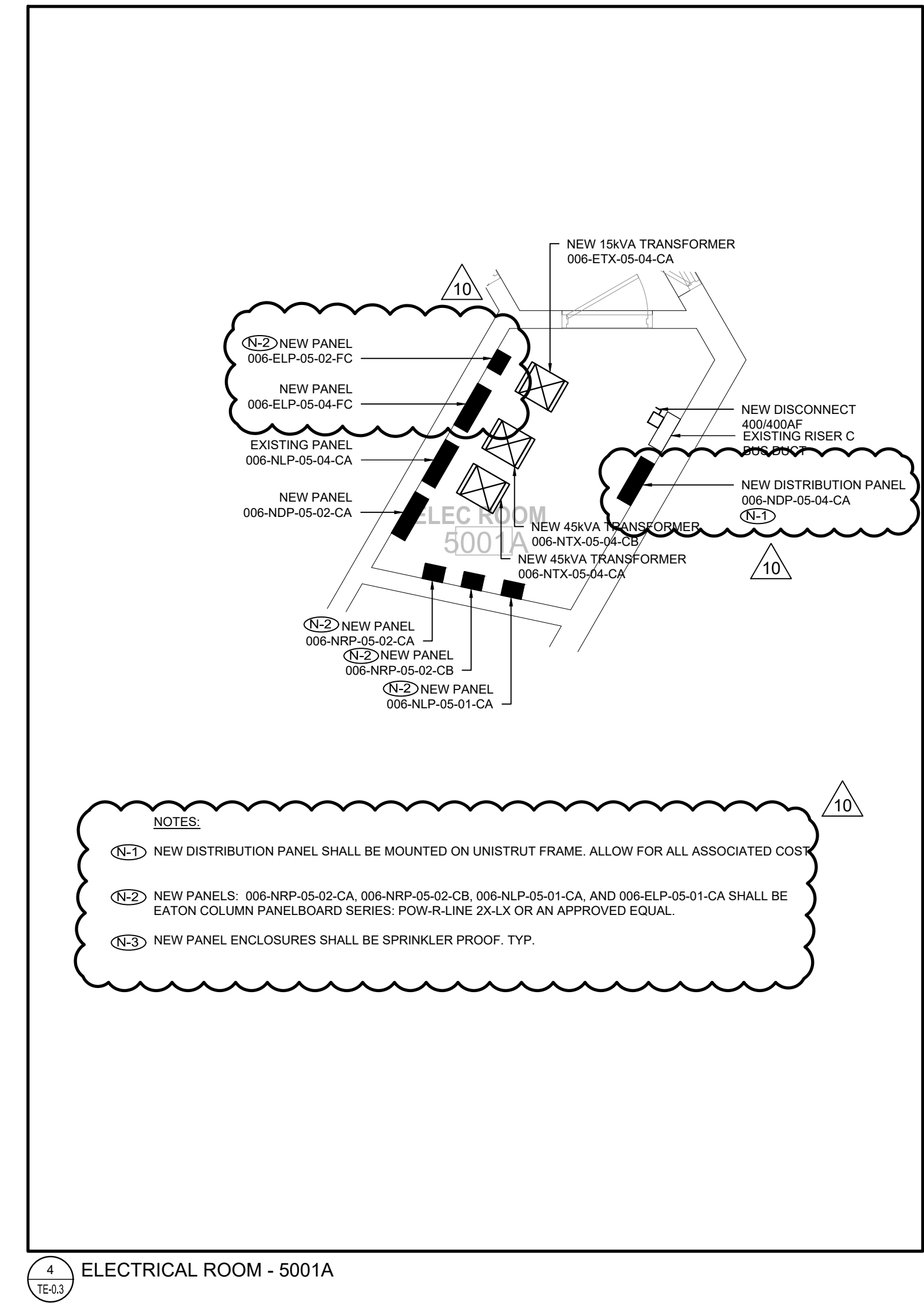
1 SINGLE LINE DIAGRAM N.T.S



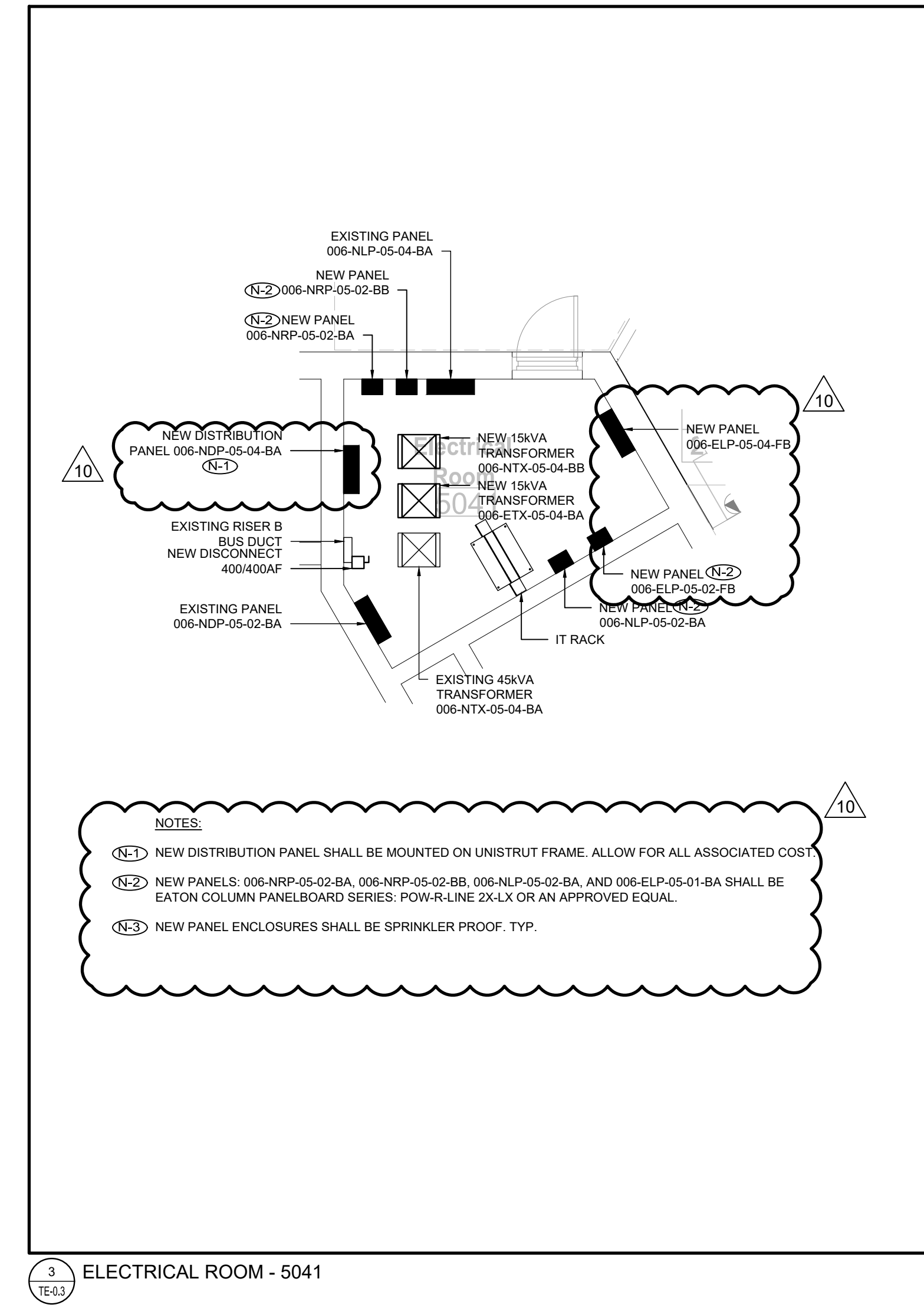
7 FURNITURE SYSTEM CONNECTION-FLOOR FEED (POWER&COMM) N.T.S



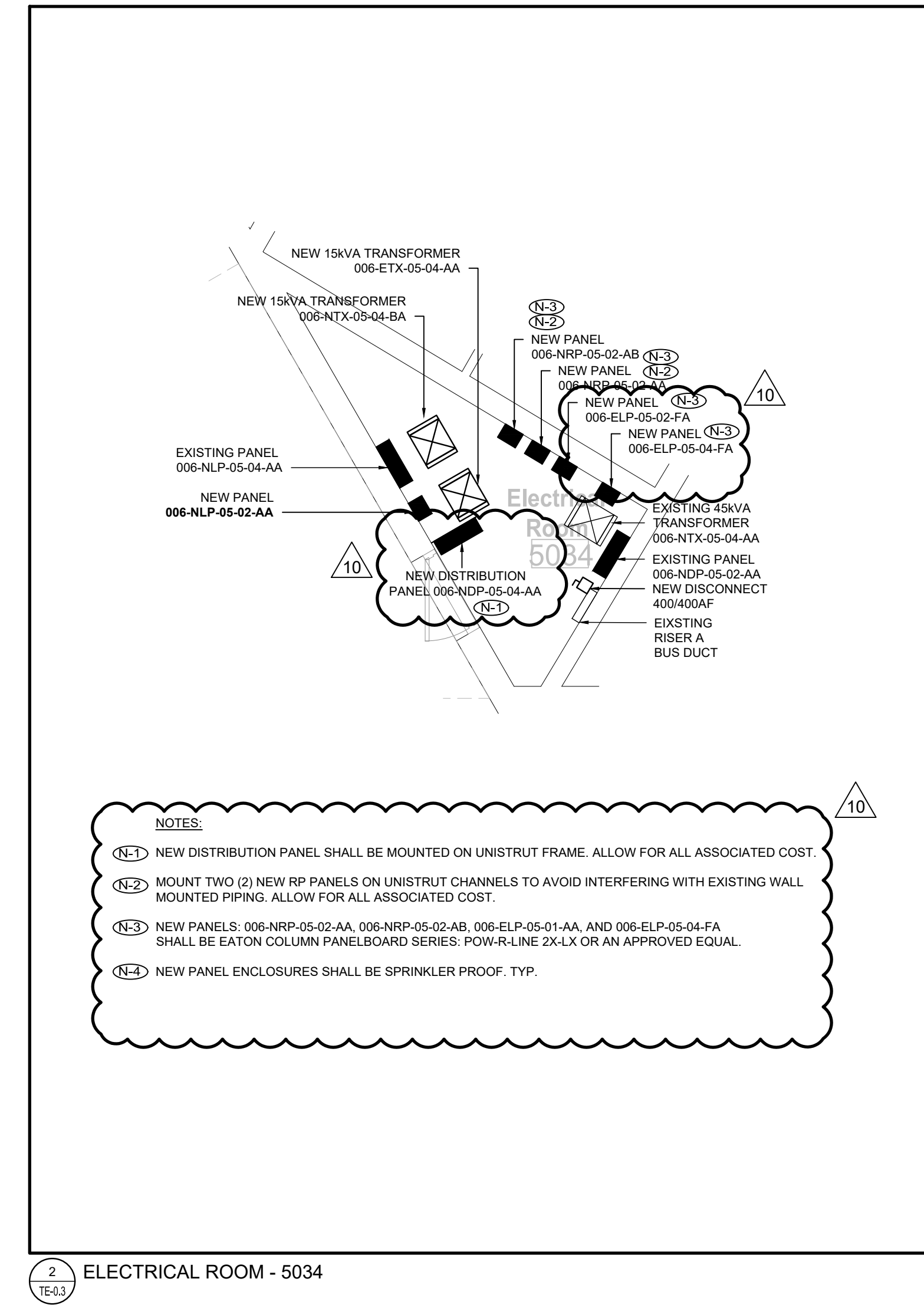
8 TYPICAL 2U-48 PORT MODULAR PATCH PANEL DETAIL N.T.S



9 ELECTRICAL ROOM - 5001A



10 ELECTRICAL ROOM - 5001



11 ELECTRICAL ROOM - 5034

10	2024-11-20	ISSUED FOR ADD-04-R1
9	2024-11-20	ISSUED FOR ADD-04
8	2024-11-14	ISSUED FOR ADD-03
7	2024-09-27	ISSUED FOR TENDER
6	2024-08-16	ISSUED FOR PERMIT/TENDER
5	2024-08-02	ISSUED FOR PER-02
4	2024-04-26	ISSUED FOR W/C CLOSING
3	2024-12-12	ISSUED FOR O2 REVIEW
2	2024-12-11	ISSUED FOR O2 REVIEW
1	2024-04-04	ISSUED FOR O2

No. Date Issue/Revision

PROJECT CONTACT

NAME: Greg Zapp
TEL: 647 288 5479
Email: Greg.Zapp@smithandandersen.com

THIS DRAWING SHALL BE READ IN CONJUNCTION WITH ELECTRICAL SPECIFICATION SUBMITTED FOR THIS PROJECT.

Smith + Andersen

1109 - 100 Bloor Street East, Toronto, ON M5S 1A5
416 497 1510 416 497 1510 web@smithandandersen.com

No. Date Issue/Revision

Robarts 5th Floor MDL Renovation

Title: **ELECTRICAL DETAILS**

Project: No.08086.000 MEAVD/ Scale: AS NOTED
Drawing No.

TE-0.3

BLDG # PANEL TAG DATE MODIFIED: 25/10/2024											
CONNECTED LOAD (W)	DEMAND FACTOR	TOTAL DEMAND	DESCRIPTION (Item, Room Number(s))	BRK (A)	CT	BRK (B)	DESCRIPTION (Item, Room Number(s))	CONNECTED LOAD (W)	DEMAND FACTOR	TOTAL DEMAND	
1			EM.LTG.5TH FLOOR ROOM	15	1A	2	15	EM.LTG.6TH FLOOR 1700W			1
1			EM.LTG.5TH FLOOR 1600W	15	3A	4	20	TRANS ST4			1
1			EM.LTG.4TH FLOOR 1600W	15	5C	6	20				1
1			SPARE	15	7A	8	15	SPACE			1
1			SPARE	15	9B	10		SPACE			1
1			SPARE	15	11C	12		SPACE			1
1			SPARE	15	13A	14		SPACE			1
1			SPARE	15	15B	16		SPACE			1
1			006-ELP-05-04-FA	30	17C	18		SPACE			1
1				4	19A	20		SPACE			1
1				3P	21B	22		SPACE			1
1			SPARE	15	23C	24		SPACE			1
BLDG: FLOOR: ROOM: NEW TAG:											
RATINGS: 25SA 1 240X16V 3 PHASE 4 WIRE S.C.: 25A											
FED. FROM: PANEL TAG: BLDG # ROOM # BREAKER SIZE FEEDER SIZE:											

10 NEW PANEL 006-ELP-05-04-FA
N.T.S.

BLDG # PANEL TAG DATE MODIFIED: 25/10/2024											
CONNECTED LOAD (W)	DEMAND FACTOR	TOTAL DEMAND	DESCRIPTION (Item, Room Number(s))	BRK (A)	CT	BRK (B)	DESCRIPTION (Item, Room Number(s))	CONNECTED LOAD (W)	DEMAND FACTOR	TOTAL DEMAND	
1			EXT.LTG.5TH FLOOR 500W	15	1A	2	15	EXT.LTG.5TH FLOOR 900W			1
1			EXT.LTG.4TH FLOOR 500W	15	3A	4		EXT.LTG.4TH FLOOR 400W			1
1			1 RECEPT 4TH FLOOR ROOM 46	15	5C	6		1 RECEPT			1
1			1 RECEPT 5TH FLOOR ROOM 54	15	7A	8	20	SPARE			1
1			SPARE	15	9B	10	2P				1
1			SPARE	15	11C	12		SPACE			1
1			SPARE	15	13A	14		SPACE			1
1			SPARE	15	15B	16		SPACE			1
1			006-ELP-05-04-FB	30	17C	18		SPACE			1
1				4	19A	20		SPACE			1
1				3P	21B	22		SPACE			1
1			SPARE	15	23C	24		SPACE			1
BLDG: FLOOR: ROOM: NEW TAG:											
RATINGS: 25SA 1 240X16V 3 PHASE 4 WIRE S.C.: 25A											
FED. FROM: PANEL TAG: BLDG # ROOM # BREAKER SIZE FEEDER SIZE:											

11 NEW PANEL 006-ELP-05-04-FB
N.T.S.

BLDG # PANEL TAG DATE MODIFIED: 25/10/2024											
CONNECTED LOAD (W)	DEMAND FACTOR	TOTAL DEMAND	DESCRIPTION (Item, Room Number(s))	BRK (A)	CT	BRK (B)	DESCRIPTION (Item, Room Number(s))	CONNECTED LOAD (W)	DEMAND FACTOR	TOTAL DEMAND	
1			EM.LTG.5TH FLOOR 1300W	15	1A	2	15	EM.LTG.6TH FLOOR 1600W			1
1			EM.LTG.5TH FLOOR 1600W	15	3A	4	20	TRANS ST5			1
1			EM.LTG.4TH FLOOR 1600W	15	5C	6	2P				1
1			SPARE	15	7A	8	15	SPACE			1
1			SPARE	15	9B	10		SPACE			1
1			SPARE	15	11C	12		SPACE			1
1			SPARE	15	13A	14		SPACE			1
1			SPARE	15	15B	16		SPACE			1
1			006-ELP-05-04-FC	30	17C	18		SPACE			1
1				4	19A	20		SPACE			1
1				3P	21B	22		SPACE			1
1			SPARE	15	23C	24		SPACE			1
BLDG: FLOOR: ROOM: NEW TAG:											
RATINGS: 25SA 1 240X16V 3 PHASE 4 WIRE S.C.: 25A											
FED. FROM: PANEL TAG: BLDG # ROOM # BREAKER SIZE FEEDER SIZE:											

12 NEW PANEL 006-ELP-05-04-FC
N.T.S.

BLDG # PANEL TAG DATE MODIFIED: 25/10/2024											
CONNECTED LOAD (W)	DEMAND FACTOR	TOTAL DEMAND	DESCRIPTION (Item, Room Number(s))	BRK (A)	CT	BRK (B)	DESCRIPTION (Item, Room Number(s))	CONNECTED LOAD (W)	DEMAND FACTOR	TOTAL DEMAND	
0			LIGHTING 1800W ROOM 44	15	1A	2	15	LIGHTING 2400W ROOM 31, 32			0
0			LIGHTING 2600W ROOM 24	15	3A	4	15	LIGHTING 2200W ROOM 31			0
0			LIGHTING 1600W ROOM 44	15	5C	6	15	LTG. 2000W ROOM 15			0
0			BOOK STACK LIGHTING ROOM 44, 2200W	15	7A	8	15	LTG. 1000W RM 44, 45, 53, 52			0
0			BOOK STACK LIGHTING ROOM 44, 2600W	15	9B	10	15	LIGHTING 1700W ROOM 44			0
0			BOOK STACK LIGHTING ROOM 44, 2600W	15	11C	12	15	SPARE			0
0			LIGHTS AP/EX EXTERIOR	15	13A	14	15	SPARE			0
0			SPARE	15	15B	16	15	SPARE			0
0			SPARE	15	17C	18	15	SPARE			0
0			SPARE	15	19A	20	15	SPARE			0
0			SPACE	15	21B	22		SPACE			0
0			SPACE	15	23C	24		SPACE			0
0			SPACE	15	25A	26		SPACE			0
0			SPACE	15	27B	28		SPACE			0
0			SPACE	15	29A	30		SPACE			0
0			SPACE	15	31A	32		SPACE			0
0			SPACE	15	33B	34		SPACE			0
0			SPACE	15	35C	36		SPACE			0
0			SPACE	15	37A	38		SPACE			0
0			SPACE	15	39B	40		SPACE			0
0			SPACE	15	41C	42		SPACE			0
BLDG: FLOOR: ROOM: NEW TAG:											
RATINGS: 25SA 1 240X16V 3 PHASE 4 WIRE S.C.: 25A											
FED. FROM: PANEL TAG: BLDG # ROOM # BREAKER SIZE FEEDER SIZE:											

7 EXISTING PANEL 006-NLP-05-04-AA
N.T.S.

BLDG # PANEL TAG DATE MODIFIED: 25/10/2024											
CONNECTED LOAD (W)	DEMAND FACTOR	TOTAL DEMAND	DESCRIPTION (Item, Room Number(s))	BRK (A)	CT	BRK (B)	DESCRIPTION (Item, Room Number(s))	CONNECTED LOAD (W)	DEMAND FACTOR	TOTAL DEMAND	
0			LTG. 1800W ROOM 44	15	1A	2	15	LTG. 3000W ROOM 44			0
0			LTG. 1500W ROOM 44	15	3A	4	15	LTG. 1100W ROOM 45			0
0			LTG. 1200W RM 43, 44	15	5C	6	15	LTG. 1700W ROOM 46			0
0			BOOK STACK LTG RM 44, 2200 W	15	7A	8	15	BOOK STACK LTG RM 44, 2200W			0
0			BOOK STACK LTG RM 44, 2400 W	15	9B	10	15	BOOK STACK LTG RM 44, 2400 W			0
0			BOOK STACK LTG RM 44, 2200 W	15	11C	12	15	BOOK STACK LTG RM 44, 2200 W			0
0			BOOK STACK LTG RM 44, 2200 W	15	13A	14	15	BOOK STACK LTG RM 44, 2200 W			0
0			BOOK STACK LTG RM 44, 2200 W	15	15B	16	15	BOOK STACK LTG RM 44, 1800 W			0
0			SPARE	15	17C	18	15	SPARE			0
0			SPARE	15	19A	20	15	SPARE			0
0			SPARE	15	21B	22	15	SPARE			0
0			SPARE	15	23C	24	15	SPARE			0
0			SPARE	15	25A	26	15	SPARE			0
0			SPARE	15	27B	28	15	SPARE			0
0			SPACE	15	29A	30		SPACE			0
0			SPACE	15	31A	32		SPACE			0
0			SPACE	15	33B	34		SPACE			0
0			SPACE	15	35C	36		SPACE			0
0			SPACE	15	37A	38		SPACE			0
0			SPACE	15	39B	40		SPACE			0
0			SPACE	15	41C	42		SPACE			0
BLDG: FLOOR: ROOM: NEW TAG:											
RATINGS: 25SA 1 240X16V 3 PHASE 4 WIRE S.C.: 25A											
FED. FROM: PANEL TAG: BLDG # ROOM # BREAKER SIZE FEEDER SIZE:											

8 EXISTING PANEL 006-NLP-05-04-BA
N.T.S.

BLDG # PANEL TAG DATE MODIFIED: 25/10/2024											
CONNECTED LOAD (W)	DEMAND FACTOR	TOTAL DEMAND	DESCRIPTION (Item, Room Number(s))	BRK (A)	CT	BRK (B)	DESCRIPTION (Item, Room Number(s))	CONNECTED LOAD (W)	DEMAND FACTOR	TOTAL DEMAND	
0			BOOK STACK LTG. RM 44, 2200W	15	1A	2	15	LIGHTING 2200W ROOM 31			0
0			BOOK STACK LTG. RM 44, 2200W	15	3A	4	15	LIGHTING 2000W ROOM 31			0
0			LTG. 1600W ROOM 44	15	5C	6	15	LIGHTING 2200W ROOM 31			0
0			LIGHTING 2000W ROOM 32	15	7A	8	15	LIGHTING 2200W ROOM 31			0
0			LIGHTING 2000W ROOM 32	15	9B	10	15	LIGHTING 2000W ROOM 36, 40, 31			0
0			LIGHTING 1800W ROOM 31, 41	15	11C	12	15	LIGHTING 2400W ROOM 31			0
0			LIGHTING 2200W ROOM 31	15	13A	14	15	SPARE			0
0			LIGHTING 2200W ROOM 44, 50, 33,55	15	15B	16	15	SPARE			0
0			SPARE	15	17C	18	15	SPARE			0
0			SPARE	15	19A	20	15	SPARE			0
0			SPARE	15	21B	22	15	SPARE			0
0			SPARE	15	23C	24	15	SPACE			0
0			SPACE	15	25A	26		SPACE			0
0			SPACE	15	27B	28		SPACE			0
0			SPACE	15	29A	30		SPACE			0
0			SPACE	15	31A	32		SPACE			0
0			SPACE	15	33B	34		SPACE			0
0			SPACE	15	35C	36		SPACE			0
0			SPACE	15	37A	38		SPACE			0
0			SPACE	15	39B	40		SPACE			0
0			SPACE	15	41C	42		SPACE			0
BLDG: FLOOR: ROOM: NEW TAG:											
RATINGS: 25SA 1 240X16V 3 PHASE 4 WIRE S.C.: 25A											
FED. FROM: PANEL TAG: BLDG # ROOM # BREAKER SIZE FEEDER SIZE:											