

ADDENDUM

No. 05 Date: 9/26/2024
Project No. 0020711.01 Attention: Leonard D'Souza
Project Name: Princess Margaret Cancer Centre
Stem Cell Transplant 2, MHC, MHDU, DSC
Address: University Health Network
610 University Avenue
Toronto ON

Issued By: Linda Vela

Distribution: Refer to the UHN Cover Letter

This Addendum forms a part of the Bidding and Contract Documents and modifies the original issued Bidding Documents (dated August 13, 2024) for the above titled project, as indicated below, and is hereby incorporated into the Contract Documents as part thereof.

Bidders are required to acknowledge receipt of this Addendum in the space provided on the Proposal/Bid Form.

The following architectural questions have been received by the Bidder(s) and the following answers are being provided to all Bidder(s).

1. () I understand that the question period is closed. However, it is pertinent that this issue is addressed for the benefit of the owner and the bidders. Your attention and response to the issue below is much appreciated:

M1305A, GL M - N / 12, note 9 - we have to "cut back the exhaust duct up to Level 12". Can you confirm what you mean by "cut back". Do we just have to cut the duct tight to the ceiling of Level 5, seal and firestop? Or we have to remove the entire duct from Level 12 to Level 5?

If we have to remove the entire duct from Level 12 to Level 5, please provide drawings for Level 6 to Level 12 showing where the duct is and the functioning spaces affected.

Response: Remove existing rated enclosure, around kitchen exhaust duct to be removed, within Shaft I from Floor 5 to Floor 12. Provide new horizontal shaft wall enclosure below Level 6 slab (above Level 5 ceiling) to cap approx. 1m x 1m opening in slab left by removal of the kitchen exhaust duct. Refer to detail 1 on A0801 Interior Partition Details. Coordinate work with mechanical and electrical drawings. Shaft starts at Level 5 ceiling and shaft is accessible from Level 6, 12 and 19 which are mechanical spaces. Demolition can happen during working hours. Refer to Spec Section 01 35 13 for noisy work requirements. Refer to As Built drawing SP-29 Building Section for slab-to-slab height issued in Arch Addendum 1. Refer to as built issued herewith for Shaft I information from Level 6 to 12.

ATTACHMENTS: The following is a list of the modified documents and a brief description of what has been modified.

AS BUILTS:

DRAWING A-A0-209 – PLAN FL UPPER 6

Reference for Shaft I at gridline xE/ y6.

DRAWING A-A0-210 – PLAN FL UPPER 7

Reference for Shaft I at gridline xE/ y6.

DRAWING A-A0-211 – PLAN FL UPPER 8

Reference for Shaft I at gridline xE/ y6.

DRAWING A-A0-212 – PLAN FL UPPER 9

Reference for Shaft I at gridline xE/ y6.

DRAWING A-A0-213 – PLAN FL UPPER 10

Reference for Shaft I at gridline xE/ y6.

DRAWING A-A0-214 – PLAN FL UPPER 11

Reference for Shaft I at gridline xE/ y6.

DRAWING A-A0-215 – PLAN FL UPPER 12

Reference for Shaft I at gridline xE/ y6.

MECHANICAL:

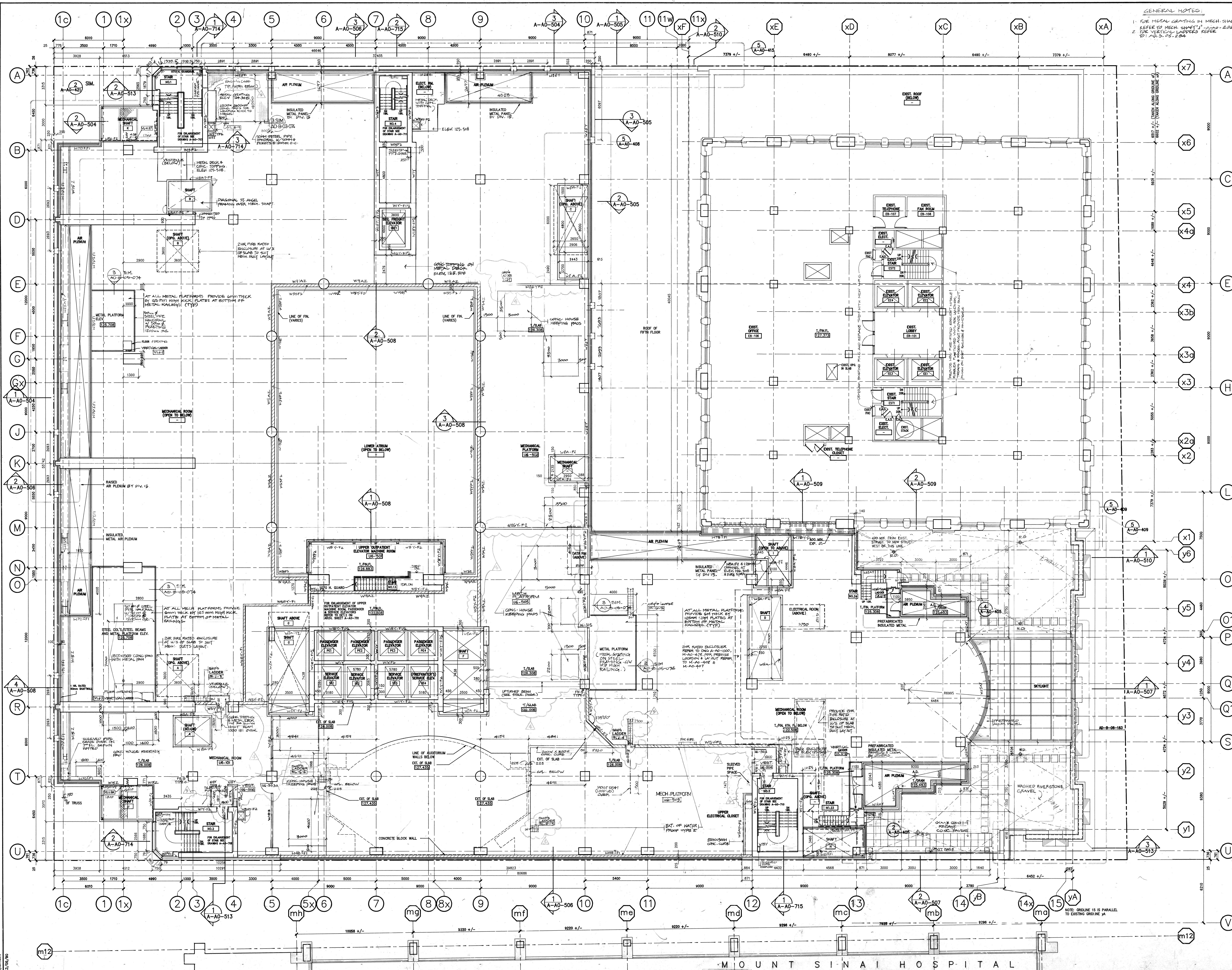
- A. Incorporate the following Mechanical Addendum 4, prepared by Quasar Consulting Group, dated September 26, 2024 attached to this Addendum 05.

ELECTRICAL:

- B. Incorporate the following Electrical Addendum 4, prepared by Quasar Consulting Group, dated September 26, 2024 attached to this Addendum 05.

Total number of pages: 2

This Addendum consists of 15 pages (including ALL attachments, excluding UHN cover).



GENERAL NOTES:

1. FOR METAL GRATING IN MECH. SHAFTS
REFER TO MECH. SHAFT "J" - A-40-206
2. FOR VERTICAL LADDERS REFER
TO: AD. 3. 05-284

DETAIL SYMBOLS

<div style="border: 1px solid black; padding: 2px; display: inline-block;"> DETAIL NUMBER DETAIL LOCATION SHEET </div>	
3	WALL TYPES AT EXTERIOR WALLS FOR BACK-UP WALL ONLY. (SEE DETAILS FOR EXTERIOR ROOFING).
4	WALL TYPES AT EXTERIOR WALLS SHOW THE BACK-UP FOR THE SPANDREL GLASS ONLY. (FOR VISION GLASS REFER TO DETAILS & ELEVATIONS).
5	PROVIDE WEARING SURFACE UP-TURNED AT ALL FLETHUMS.
6	PROVIDE PLASTIC CORNER GUARD AT DRYWALL AS INDICATED ON FLOOR PLANS.
7	V. BARRIER & FRAMED INSULATION TYPE 7 AT MECH. H.L.'S. TO BE NOTED ON THE DRAWING.
8	PROVIDE 150MM HIGH CONCRETE CURB AT ALL ELECTRICAL ROOMS.
9	FIRE FLEXIBLE GASKET PACKING - FIRE-HOSE GASKET & FIRE EXTINGUISHER.
10	FIRE RESISTED FIRE EXTINGUISHER. F.E.S. SURFACED FIRE EXTINGUISHER.
11	150 MM. H. CONC. CURB, ALL AROUND MECHANICAL SHAFT.
12	ALL FIRE EXTINGUISHERS SHALL BE CLASS A-0 TYPE ACCEPT THESE MARKED AS TYPE "B" OR TYPE "C".
13	ALL FIRE EXTINGUISHERS IN MECHANICAL ROOMS AND ELECTRICAL SHALL BE CLASS C TYPE - 100% RATING.
14	FIRE EXTINGUISHERS IN DIESEL OIL PUMP AND FLAMMABLE STORE SHALL BE CLASS B TYPE - 100% RATING.
15	ALL EXTINGUISHERS IDENTIFIED "X" WILL BE N.I.C.
16	FOR ALL BUILDERS REFER TO DRAWING FOR SPEC.
17	MECH. PLATFORM WITH FLEX WALL TO HAVE MIN. 254 CM. FIRE RATING. 1100 BALTIMORE AXP BATTERIES & BATTERIES 1100 CM. 1200 CM. HIGH OF AIRBORNE CURED TO 100% JOINT COMPLETION.


	INTERIM CHANGE ORDER NO. 0088 JAN 1993 ISSUED FOR FINAL BLDG PERMIT 7 DEC 1992 REVISIONS FOR BUILDING DEPT. 12 NOV 92 ISSUED FOR CONSTRUCTION 29 MAY 1992	AUG 18/93
	MODIFIED FOR BLDG DEPT. TENDER # A1 ISSUED FOR TENDER	10 MAY/92 30 SEP/91

ISSUED FOR M.O.B. APPROVAL 3RD JULY 1991
 ISSUED FOR BUILDING PERMIT 3RD JULY 1991
 ISSUED FOR FIRE MARSHALL APPROVAL 3RD JULY 1991

NUMBER	DESCRIPTION	DATE
REVISIONS		
<p>"ALL DRAWINGS, SPECIFICATIONS AND RELATED DOCUMENTS ARE THE COPYRIGHT PROPERTY OF THE ARCHITECT AND MUST BE RETURNED UPON REQUEST. REPRODUCTION OF DRAWINGS, SPECIFICATIONS AND RELATED DOCUMENTS IN PART OR WHOLE IS FORBIDDEN WITHOUT THE ARCHITECT'S WRITTEN PERMISSION".</p>		

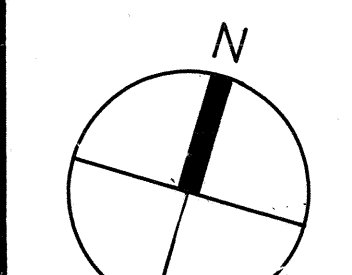
CONTRACTOR MUST CHECK AND VERIFY ALL DIMENSIONS ON THE JOB.

THIS DRAWING SHALL NOT BE USED FOR CONSTRUCTION PURPOSES
UNLESS COUNTERSIGNED BY:

 **Zeidler Roberts Partnership**
Architects
315 Queen Street West / Toronto / Ontario



**The Ontario
Cancer Institute
The Princess
Margaret Hospital**

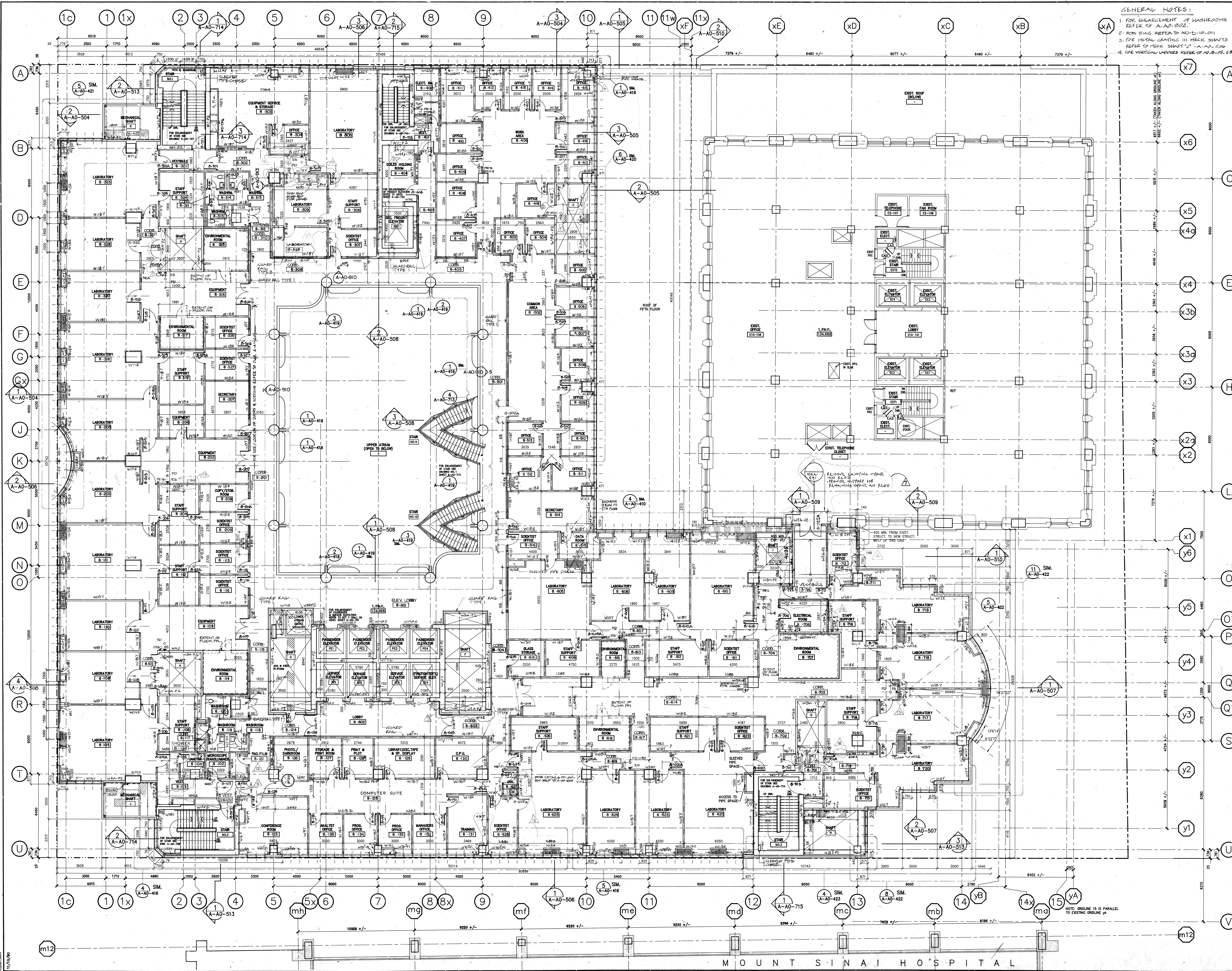


DRAWN B.T./G.L./J.L.	SCALE 1:100
CHECKED M.K.	DATE

SHEET
11/11/66

PLAN FL UPPER 6

SHEET NUMBER **87T109-A-A0-209** REVISION NUMBER 



GENERAL NOTES:
1. FOR ENLARGEMENT OF WASHERS REFER TO A-A-002.
2. FOR METAL GRATING IN MECH. SHAFTS REFER TO MECH. SHAFT 'U' A-A-002.
3. FOR VERTICAL LADDERS REFER TO A-A-002, 2.84

DETAIL SYMBOLS

DETAIL NUMBER
DETAIL LOCATION
SHEET

GENERAL NOTES

1. FOR TYPICAL LAYOUT OF JANITORY CLOSET REFER TO A-A-002.
2. WALL TYPES AT EXTERIOR WALLS FOR BACK-UP WALL ONLY. (SEE DETAILS FOR BACK-UP WALL ASSEMBLY).
3. WALL TYPES AT EXTERIOR WALLS SHOW THE BACK-UP FOR THE SPANFOLD GLASS ONLY. (FOR VISION GLASS REFER TO DETAILS & ELEVATIONS).
4. PROVIDE PLASTIC CORNER GUARD AT DRYWALL AS INDICATED ON FLOOR PLANS.
5. V. BARRIER & FRAMED INSULATION TYPE 'B' MECH. H.I.T.K. AS INDICATED ON THE DRAWING.
6. PROVIDE 150MM HIGH CONCRETE CHUB AT ALL ELECTRICAL ROOMS.
7. FIRE EXTINGUISHER CABINET SHALL BE FIRE EXTINGUISHER & FIRE EXTINGUISHER.
8. RECESSED FIRE EXTINGUISHER FEES - SURFACED FIRE EXTINGUISHER.
9. 150MM H. CONG. CHUB ALL AROUND.
10. ALL FIRE EXTINGUISHERS SHALL BE CLASS A-2A TYPE EXCEPT THOSE MARKED AS TYPE 'B' OR TYPE 'C'.
11. ALL FIRE EXTINGUISHERS IN MECHANICAL ROOMS AND ELECTRICAL SHALL BE CLASS C TYPE - 10KG. MINIMUM.
12. FIRE EXTINGUISHERS IN DISINFECTION, OIL, FORD AND FLAMMABLE STORE SHALL BE CLASS B TYPE - 10KG. MINIMUM.
13. ALL REQUIREMENTS DENOTES 'P' WILL BE N.I.C.
14. REMOVE EXISTING WALL AND PROVIDE SUPPORT FOR REMAINING WALL AND READ.
15. 400 MIN. FROM EXIST. STRUCT. TO NEW STRUCT. WEST OF THIS LINE.

NO.	DESCRIPTION	DATE
1	ISSUED FOR A-A-002	20/01/93
2	ISSUED FOR A-A-002	20/01/93
3	ISSUED FOR A-A-002	20/01/93
4	ISSUED FOR A-A-002	20/01/93
5	ISSUED FOR A-A-002	20/01/93
6	ISSUED FOR A-A-002	20/01/93
7	ISSUED FOR A-A-002	20/01/93
8	ISSUED FOR A-A-002	20/01/93
9	ISSUED FOR A-A-002	20/01/93
10	ISSUED FOR A-A-002	20/01/93
11	ISSUED FOR A-A-002	20/01/93
12	ISSUED FOR A-A-002	20/01/93
13	ISSUED FOR A-A-002	20/01/93
14	ISSUED FOR A-A-002	20/01/93
15	ISSUED FOR A-A-002	20/01/93
16	ISSUED FOR A-A-002	20/01/93
17	ISSUED FOR A-A-002	20/01/93
18	ISSUED FOR A-A-002	20/01/93
19	ISSUED FOR A-A-002	20/01/93
20	ISSUED FOR A-A-002	20/01/93
21	ISSUED FOR A-A-002	20/01/93
22	ISSUED FOR A-A-002	20/01/93
23	ISSUED FOR A-A-002	20/01/93
24	ISSUED FOR A-A-002	20/01/93
25	ISSUED FOR A-A-002	20/01/93
26	ISSUED FOR A-A-002	20/01/93
27	ISSUED FOR A-A-002	20/01/93
28	ISSUED FOR A-A-002	20/01/93
29	ISSUED FOR A-A-002	20/01/93
30	ISSUED FOR A-A-002	20/01/93
31	ISSUED FOR A-A-002	20/01/93
32	ISSUED FOR A-A-002	20/01/93
33	ISSUED FOR A-A-002	20/01/93
34	ISSUED FOR A-A-002	20/01/93
35	ISSUED FOR A-A-002	20/01/93
36	ISSUED FOR A-A-002	20/01/93
37	ISSUED FOR A-A-002	20/01/93
38	ISSUED FOR A-A-002	20/01/93
39	ISSUED FOR A-A-002	20/01/93
40	ISSUED FOR A-A-002	20/01/93
41	ISSUED FOR A-A-002	20/01/93
42	ISSUED FOR A-A-002	20/01/93
43	ISSUED FOR A-A-002	20/01/93
44	ISSUED FOR A-A-002	20/01/93
45	ISSUED FOR A-A-002	20/01/93
46	ISSUED FOR A-A-002	20/01/93
47	ISSUED FOR A-A-002	20/01/93
48	ISSUED FOR A-A-002	20/01/93
49	ISSUED FOR A-A-002	20/01/93
50	ISSUED FOR A-A-002	20/01/93
51	ISSUED FOR A-A-002	20/01/93
52	ISSUED FOR A-A-002	20/01/93
53	ISSUED FOR A-A-002	20/01/93
54	ISSUED FOR A-A-002	20/01/93
55	ISSUED FOR A-A-002	20/01/93
56	ISSUED FOR A-A-002	20/01/93
57	ISSUED FOR A-A-002	20/01/93
58	ISSUED FOR A-A-002	20/01/93
59	ISSUED FOR A-A-002	20/01/93
60	ISSUED FOR A-A-002	20/01/93
61	ISSUED FOR A-A-002	20/01/93
62	ISSUED FOR A-A-002	20/01/93
63	ISSUED FOR A-A-002	20/01/93
64	ISSUED FOR A-A-002	20/01/93
65	ISSUED FOR A-A-002	20/01/93
66	ISSUED FOR A-A-002	20/01/93
67	ISSUED FOR A-A-002	20/01/93
68	ISSUED FOR A-A-002	20/01/93
69	ISSUED FOR A-A-002	20/01/93
70	ISSUED FOR A-A-002	20/01/93
71	ISSUED FOR A-A-002	20/01/93
72	ISSUED FOR A-A-002	20/01/93
73	ISSUED FOR A-A-002	20/01/93
74	ISSUED FOR A-A-002	20/01/93
75	ISSUED FOR A-A-002	20/01/93
76	ISSUED FOR A-A-002	20/01/93
77	ISSUED FOR A-A-002	20/01/93
78	ISSUED FOR A-A-002	20/01/93
79	ISSUED FOR A-A-002	20/01/93
80	ISSUED FOR A-A-002	20/01/93
81	ISSUED FOR A-A-002	20/01/93
82	ISSUED FOR A-A-002	20/01/93
83	ISSUED FOR A-A-002	20/01/93
84	ISSUED FOR A-A-002	20/01/93
85	ISSUED FOR A-A-002	20/01/93
86	ISSUED FOR A-A-002	20/01/93
87	ISSUED FOR A-A-002	20/01/93
88	ISSUED FOR A-A-002	20/01/93
89	ISSUED FOR A-A-002	20/01/93
90	ISSUED FOR A-A-002	20/01/93
91	ISSUED FOR A-A-002	20/01/93
92	ISSUED FOR A-A-002	20/01/93
93	ISSUED FOR A-A-002	20/01/93
94	ISSUED FOR A-A-002	20/01/93
95	ISSUED FOR A-A-002	20/01/93
96	ISSUED FOR A-A-002	20/01/93
97	ISSUED FOR A-A-002	20/01/93
98	ISSUED FOR A-A-002	20/01/93
99	ISSUED FOR A-A-002	20/01/93
100	ISSUED FOR A-A-002	20/01/93

REVISIONS

ALL DRAWINGS, SPECIFICATIONS AND RELATED DOCUMENTS ARE THE COPYRIGHT PROPERTY OF THE ARCHITECT AND MUST BE RETURNED UPON REQUEST. REPRODUCTION OF DRAWINGS, SPECIFICATIONS AND RELATED DOCUMENTS IN PART OR WHOLE IS FORBIDDEN WITHOUT THE ARCHITECT'S WRITTEN PERMISSION.

CONTRACTOR MUST CHECK AND VERIFY ALL DIMENSIONS ON THE JOB.

THIS DRAWING SHALL NOT BE USED FOR CONSTRUCTION PURPOSES UNLESS COUNTERSIGNED BY THE ARCHITECT.

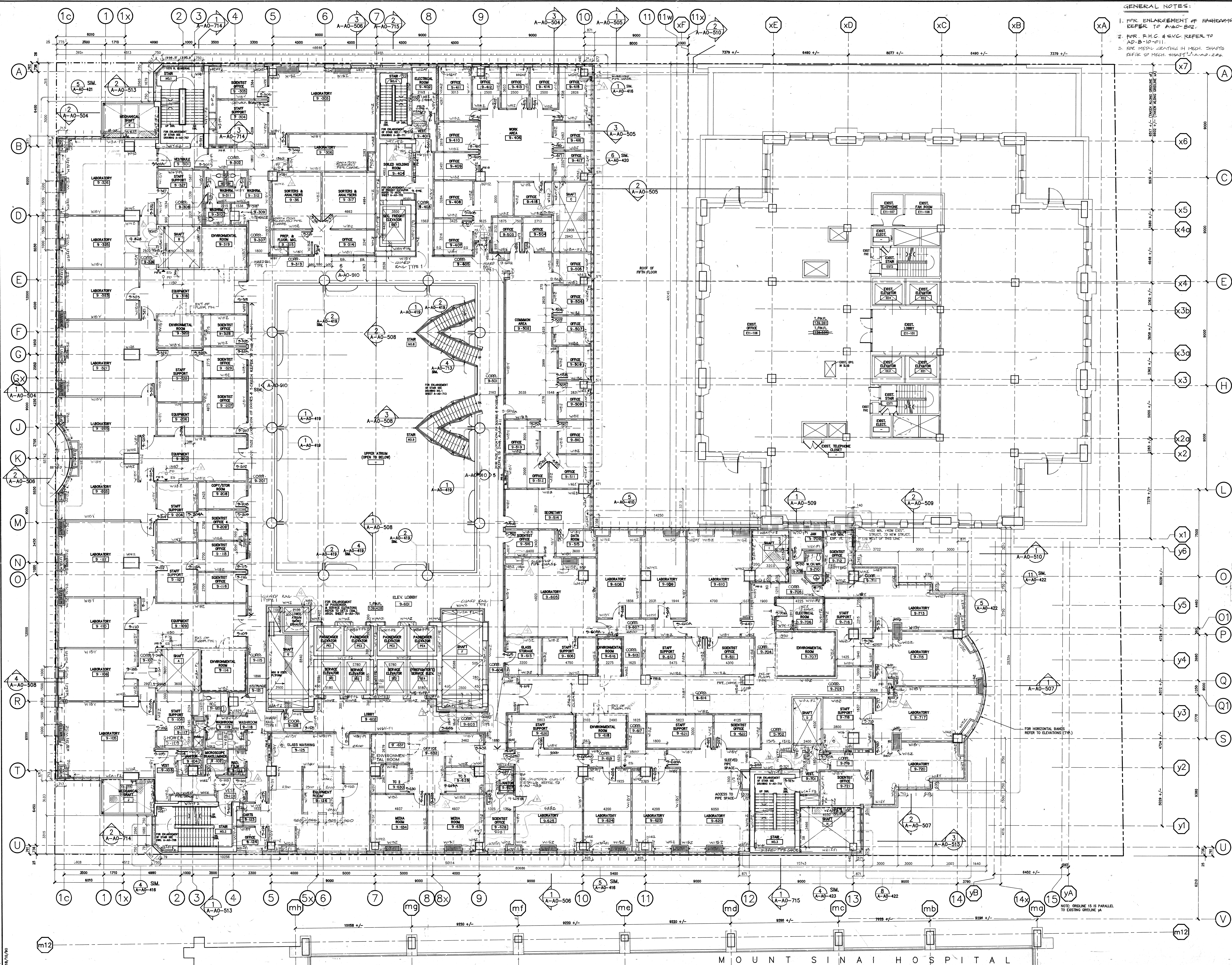
Zeldler Roberts Partnership Architects

315 Queen Street West / Toronto / Ontario

The Ontario Cancer Institute
The Princess Margaret Hospital

ONTARIO ASSOCIATION OF ARCHITECTS

DRWN: B.T. / G.L. SCALE: 1:100
CHKD: M.K. DATE:
SHEET TITLE: PLAN FL 8
SHEET NUMBER: 677109-A-A-0211



GENERAL NOTES:

1. FOR ENLARGEMENT OF WALLS REFER TO A-AO-502.
2. FOR F.H.C. & E.V.C. REFER TO A-AO-502.
3. FOR MECH. CEILING IN MECH. SHAFTS REFER TO MECH. SHAFT A-AO-502.

DETAIL SYMBOLS

1. FOR TYPICAL JANITOR'S CLOSET LAYOUT REFER TO A-AO-495.
2. WALL TYPES AT EXTERIOR WALLS FOR BACK-UP WALL ONLY. (SEE DETAILS FOR EXTERIOR WALL ASSEMBLY).
3. HALL TYPES AT EXTERIOR WALLS SHOW THE BACK-UP FOR THE SPANDREL GLASS ONLY. (FOR VISION GLASS REFER TO DETAILS & ELEVATIONS).
4. PROVIDE PLASTIC CORNER GUARD AT DRYWALL AS INDICATED ON FLOOR PLANS.
5. V. BARRIER & FOAMED INSULATION TYPE 7. AT MECH. H.I.T. K. AS DENOTED ON THE DRAWING.
6. PROVIDE 150MM HIGH CONCRETE CURB AT ALL ELECTRICAL ROOMS.
7. F.H.C. - FIREHOSE CABINET & FIRE EXTINGUISHER.
8. F.E.S. - RELEASED FIRE EXTINGUISHER.
9. F.E.S. - SURFACED FIRE EXTINGUISHER.
10. 150MM HONG. CURB ALL AROUND.
11. ALL FIRE EXTINGUISHERS SHALL BE CLASS A-2A TYPE EXCEPT THOSE MARKED AS TYPE "B" OR TYPE "C".
12. ALL FIRE EXTINGUISHERS IN MECHANICAL ROOMS AND ELECTRICAL SHALL BE CLASS C TYPE - 100C RATING.
13. FIRE EXTINGUISHERS IN DIESEL OIL PUMP AND FLAMMABLE STORES SHALL BE CLASS B TYPE - 100C RATING.
14. ALL BUILDINGS DENOTES "B" ALL BE N.I.C.

REVISIONS	DATE
ISSUED FOR M.O.H. APPROVAL 3RD JULY 1991	
ISSUED FOR BUILDING PERMIT 3RD JULY 1991	
ISSUED FOR FIRE MARSHAL APPROVAL 3RD JULY 1991	
ISSUED FOR CONSTRUCTION 29 MAY 1992	
ISSUED FOR TENDER 18 SEP 92	
INTERIM CHANGE ORDER NO. 0088 JAN 1993	
ISSUED FOR FINAL BLDG PERMIT 7 DEC 1992	
REVISIONS FOR BUILDING DEPT. 12 NOV 92	
ISSUED FOR CONSTRUCTION 29 MAY 1992	
ISSUED FOR TENDER 18 SEP 92	
ISSUED FOR M.O.H. APPROVAL 3RD JULY 1991	
ISSUED FOR BUILDING PERMIT 3RD JULY 1991	
ISSUED FOR FIRE MARSHAL APPROVAL 3RD JULY 1991	
ISSUED FOR CONSTRUCTION 29 MAY 1992	
ISSUED FOR TENDER 18 SEP 92	

CONTRACTOR MUST CHECK AND VERIFY ALL DIMENSIONS ON THE JOB.

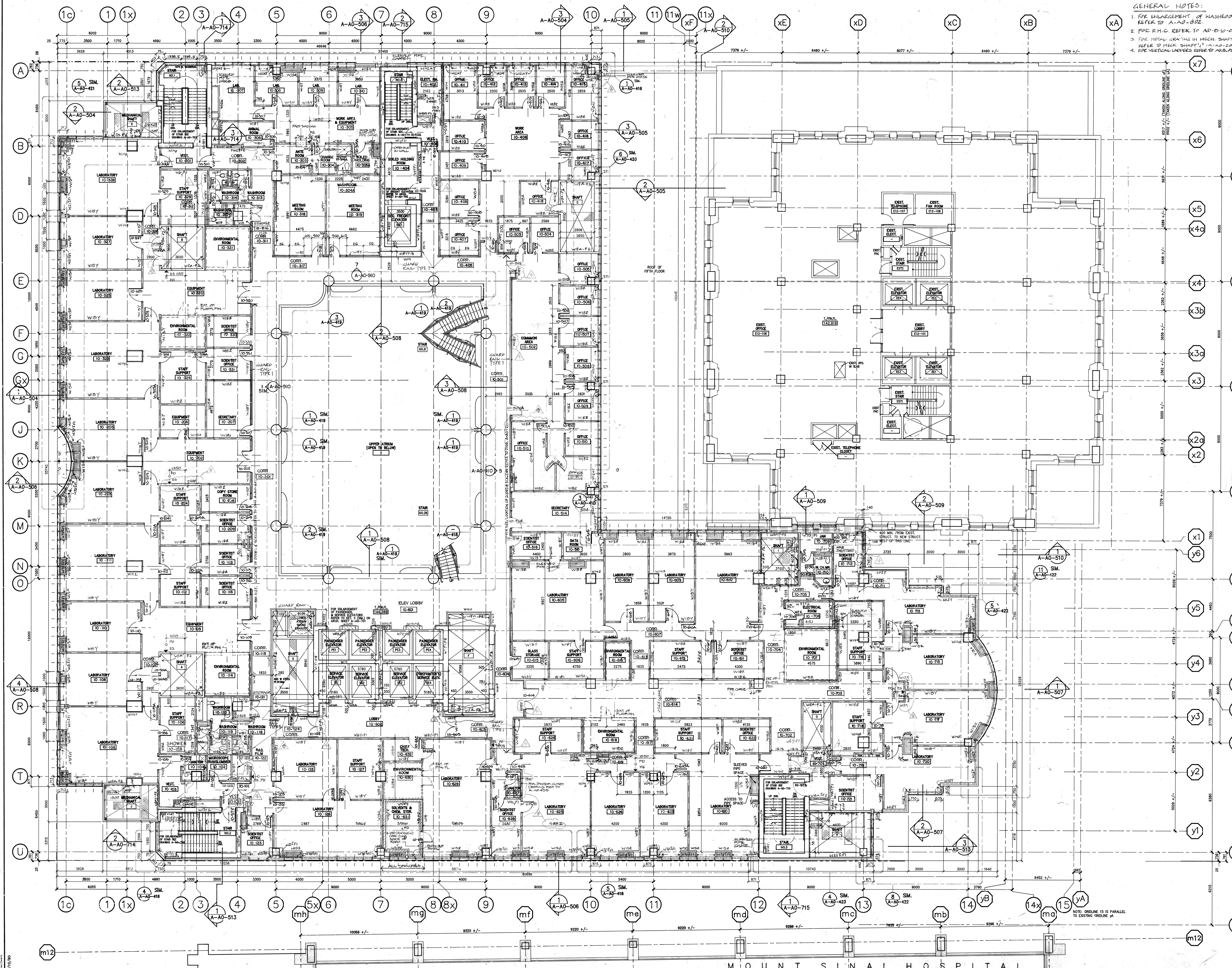
THIS DRAWING SHALL NOT BE USED FOR CONSTRUCTION PURPOSES UNLESS COUNTERSIGNED BY:

Zeidler Roberts Partnership Architects
315 Queen Street West / Toronto / Ontario

The Ontario Cancer Institute
The Princess Margaret Hospital

SCALE: 1:100
DATE: _____
DRAWN: B.T. / G.L.
CHECKED: M.K.

SHEET TITLE: **PLAN FL 9**
SHEET NUMBER: **87T109-A-AO-212**
REVISION NUMBER: _____



- GENERAL NOTES:
1. FOR ENLARGEMENT OF WASHROOMS REFER TO A-AO-502.
 2. FOR F.H.C. REFER TO A-D-10-011.
 3. FOR METAL GRATING IN MECH. SHAFTS REFER TO MECH. SHAFT 'U' - A-AO-500.
 4. FOR VERTICAL LADDERS REFER TO A-D-10-011.

DETAIL SYMBOLS

DETAIL LOCATION SHEET

GENERAL NOTES (CONT'D):

1. WALL TYPES FOR EXTERIOR WALLS FOR BACK-UP WALL ONLY (SEE DETAILS FOR EXTERIOR WALL ASSEMBLY).
2. WALL TYPES AT EXTERIOR WALLS SHALL BE TYPE 7 AT MECH. HALLS AS NOTED ON THE DRAWINGS.
3. 150MM H.C.C. CURB ALL AROUND MECHANICAL SHAFT.
4. ALL FIRE EXTINGUISHERS SHALL BE CLASS A-2A TYPE EXCEPT THOSE MARKED AS TYPE 10 OR TYPE 10-1.
5. ALL FIRE EXTINGUISHERS IN MECHANICAL ROOMS AND ELECTRICAL SHALL BE CLASS C TYPE - 10BC RATING.
6. FIRE EXTINGUISHERS IN DIESEL, OIL, FUEL AND FLAMMABLE STORES SHALL BE CLASS B TYPE - 10BC RATING.
7. ALL EQUIPMENTS DENOTES "E" WILL BE R.T.C.
8. PROVIDE PLASTIC CORNER GUARD AT DRYWALL AS INDICATED ON FLOOR PLANS.
9. V. BARRIER & FORMED INSULATION TYPE 7 AT MECH. HALLS AS NOTED ON THE DRAWINGS.
10. PROVIDE 150MM HIGH CONCRETE CURB AT ALL ELECTRICAL ROOMS.
11. FIRE EXTINGUISHERS SHALL BE CLASS A-2A TYPE EXCEPT THOSE MARKED AS TYPE 10 OR TYPE 10-1.
12. FIRE EXTINGUISHERS IN MECHANICAL ROOMS AND ELECTRICAL SHALL BE CLASS C TYPE - 10BC RATING.
13. FIRE EXTINGUISHERS IN DIESEL, OIL, FUEL AND FLAMMABLE STORES SHALL BE CLASS B TYPE - 10BC RATING.
14. ALL EQUIPMENTS DENOTES "E" WILL BE R.T.C.

ISSUED FOR I.C.O. # 010 JAN 12/94

REVISED FOR A.S.E. # 171 REVISED APRIL 94

ISSUED FOR A.S.E. # 171 REV. 22 NOV 93

INTERIM CHANGE ORDER NO. 008 JAN 1993

ISSUED FOR FINAL BLDG PERMIT 7 DEC 1992

REVISIONS FOR BUILDING DEPT. 12 NOV 92

ISSUED FOR CONSTRUCTION 29 MAY 1992

ISSUED FOR POST TENDER APPROVAL 17 MAY 92

ISSUED FOR M.O.H. APPROVAL 3RD JULY 1991

ISSUED FOR BUILDING PERMIT 3RD JULY 1991

ISSUED FOR FIRE MARSHALL APPROVAL 3RD JULY 1991

NUMBER	DESCRIPTION	DATE
1	ISSUED FOR I.C.O. # 010	JAN 12/94
2	REVISED FOR A.S.E. # 171	APR 18/94
3	ISSUED FOR A.S.E. # 171 REV. 22 NOV 93	22 NOV 93
4	INTERIM CHANGE ORDER NO. 008	JAN 1993
5	ISSUED FOR FINAL BLDG PERMIT	7 DEC 1992
6	REVISIONS FOR BUILDING DEPT.	12 NOV 92
7	ISSUED FOR CONSTRUCTION	29 MAY 1992
8	ISSUED FOR POST TENDER APPROVAL	17 MAY 92
9	ISSUED FOR M.O.H. APPROVAL	3RD JULY 1991
10	ISSUED FOR BUILDING PERMIT	3RD JULY 1991
11	ISSUED FOR FIRE MARSHALL APPROVAL	3RD JULY 1991

CONTRACTOR MUST CHECK AND VERIFY ALL DIMENSIONS ON THE JOB.

THIS DRAWING SHALL NOT BE USED FOR CONSTRUCTION PURPOSES UNLESS COUNTERSIGNED.

Zeidler Roberts Partnership Architects

315 Queen Street West / Toronto / Ontario

The Ontario Cancer Institute The Princess Margaret Hospital

ARCHITECTS

ALAN PETER WATKINS 2486

NOTE: ORIGIN 15 IS PARALLEL TO EXISTING ORIGIN 1A

DRAWN B.T. / G.L.

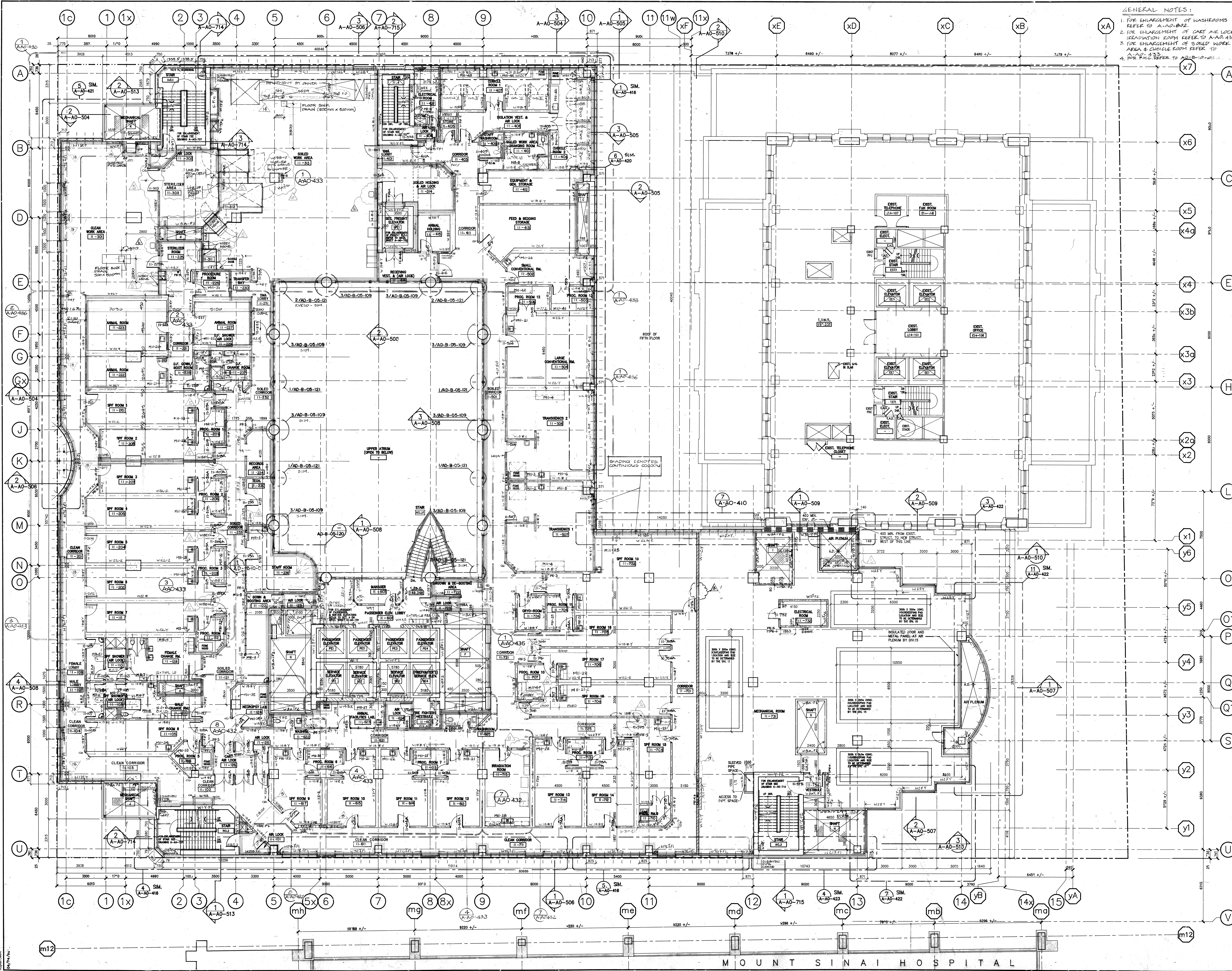
CHECKED M.K.

DATE

SCALE: 1:100

PLAN FL 10

87109-A-AO-213



GENERAL NOTES:

1. FOR ENLARGEMENT OF WASHERS REFER TO A-AO-502.
2. FOR ENLARGEMENT OF CAST IRON LOCKS REFER TO A-AO-433.
3. FOR ENLARGEMENT OF SLOPED WORK AREA & CURB REFER TO A-AO-501.
4. FOR F.H.C. REFER TO A-AO-501.

DETAIL SYMBOLS

DETAIL NUMBER
DETAIL LOCATION
SHEET NUMBER

GENERAL NOTES CONT.

7. THE CEMENT FILLING BENEATH SIDE OF WALLS WITH GUTTER BOARD ON THE OTHER SIDE SHALL BE THE SAME AS THE WALL.
8. FOR METAL CEILING IN MECHANICAL SHAFTS REFER TO MECHANICAL SHAFT 111 - A-AO-505.
9. FOR VERTICAL LADDERS REFER TO A-AO-505.
10. WALL TYPES AT EXTERIOR WALLS FOR BACK-UP WALL ONLY. (SEE DETAILS FOR THE BACK-UP FOR THE SHOWN CLASS ONLY. (FOR VERTICAL GLASS REFER TO DETAILS & ELEVATIONS.)
11. FOR METAL CEILING IN MECHANICAL SHAFTS REFER TO MECH. SHAFT 111 - A-AO-505.
12. PROVIDE PLASTIC CORNER GUARD AT DRYWALL AS INDICATED ON FLOOR PLANS.
13. V. EXISTING & FRAMED INSULATION PIPE 7" AT MECH. SHAFT 111 AS DENOTED ON THE DRAWING.
14. PROVIDE 150MM HIGH CONCRETE CURB AT ALL ELECTRICAL ROOMS.
15. F.H.C. FIREHOSE CABINET & FIRE EXTINGUISHER.
16. F.H.C. FIRE EXTINGUISHER. F.H.C. SURFACED FIRE EXTINGUISHER.
17. 150MM H.C. CURB ALL AROUND MECHANICAL SHAFT.
18. ALL FIRE EXTINGUISHERS SHALL BE CLASS A-2A TYPE EXCEPT THOSE MARKED AS TYPE 101 OR TYPE 102.
19. ALL FIRE EXTINGUISHERS IN MECHANICAL ROOMS AND ELECTRICAL SHALL BE CLASS C TYPE - 100C RATING.
20. FIRE EXTINGUISHERS IN DIESEL OIL FUEL AND FLAMMABLE STORES SHALL BE CLASS B TYPE - 100C RATING.
21. PER MILWAUKEE TYPE 2 SCHEDULES REFERRED TO A-AO-502-21 A-AO-502-70.
22. ALL EQUIPMENT DENOTES "B" WILL BE N.I.C.

REVISIONS

NUMBER	DESCRIPTION	DATE
1	ISSUED FOR I.C.D. # 014 JAN 27/93	
2	AS E 3-01 JUNE 25/94	
3	160' AS E JUNE 16/94	
4	AS E 128 AUG 13/95	
5	ISSUED FOR A-AO-501 REUS AREA 19/94	
6	ISSUED FOR A-AO-501 REUS AREA 19/94	
7	ISSUED FOR A-AO-501 REUS AREA 19/94	
8	ISSUED FOR A-AO-501 REUS AREA 19/94	
9	ISSUED FOR A-AO-501 REUS AREA 19/94	
10	ISSUED FOR A-AO-501 REUS AREA 19/94	
11	ISSUED FOR A-AO-501 REUS AREA 19/94	
12	ISSUED FOR A-AO-501 REUS AREA 19/94	
13	ISSUED FOR A-AO-501 REUS AREA 19/94	
14	ISSUED FOR A-AO-501 REUS AREA 19/94	
15	ISSUED FOR A-AO-501 REUS AREA 19/94	
16	ISSUED FOR A-AO-501 REUS AREA 19/94	
17	ISSUED FOR A-AO-501 REUS AREA 19/94	
18	ISSUED FOR A-AO-501 REUS AREA 19/94	
19	ISSUED FOR A-AO-501 REUS AREA 19/94	
20	ISSUED FOR A-AO-501 REUS AREA 19/94	
21	ISSUED FOR A-AO-501 REUS AREA 19/94	
22	ISSUED FOR A-AO-501 REUS AREA 19/94	
23	ISSUED FOR A-AO-501 REUS AREA 19/94	
24	ISSUED FOR A-AO-501 REUS AREA 19/94	
25	ISSUED FOR A-AO-501 REUS AREA 19/94	
26	ISSUED FOR A-AO-501 REUS AREA 19/94	
27	ISSUED FOR A-AO-501 REUS AREA 19/94	
28	ISSUED FOR A-AO-501 REUS AREA 19/94	
29	ISSUED FOR A-AO-501 REUS AREA 19/94	
30	ISSUED FOR A-AO-501 REUS AREA 19/94	
31	ISSUED FOR A-AO-501 REUS AREA 19/94	
32	ISSUED FOR A-AO-501 REUS AREA 19/94	
33	ISSUED FOR A-AO-501 REUS AREA 19/94	
34	ISSUED FOR A-AO-501 REUS AREA 19/94	
35	ISSUED FOR A-AO-501 REUS AREA 19/94	
36	ISSUED FOR A-AO-501 REUS AREA 19/94	
37	ISSUED FOR A-AO-501 REUS AREA 19/94	
38	ISSUED FOR A-AO-501 REUS AREA 19/94	
39	ISSUED FOR A-AO-501 REUS AREA 19/94	
40	ISSUED FOR A-AO-501 REUS AREA 19/94	
41	ISSUED FOR A-AO-501 REUS AREA 19/94	
42	ISSUED FOR A-AO-501 REUS AREA 19/94	
43	ISSUED FOR A-AO-501 REUS AREA 19/94	
44	ISSUED FOR A-AO-501 REUS AREA 19/94	
45	ISSUED FOR A-AO-501 REUS AREA 19/94	
46	ISSUED FOR A-AO-501 REUS AREA 19/94	
47	ISSUED FOR A-AO-501 REUS AREA 19/94	
48	ISSUED FOR A-AO-501 REUS AREA 19/94	
49	ISSUED FOR A-AO-501 REUS AREA 19/94	
50	ISSUED FOR A-AO-501 REUS AREA 19/94	
51	ISSUED FOR A-AO-501 REUS AREA 19/94	
52	ISSUED FOR A-AO-501 REUS AREA 19/94	
53	ISSUED FOR A-AO-501 REUS AREA 19/94	
54	ISSUED FOR A-AO-501 REUS AREA 19/94	
55	ISSUED FOR A-AO-501 REUS AREA 19/94	
56	ISSUED FOR A-AO-501 REUS AREA 19/94	
57	ISSUED FOR A-AO-501 REUS AREA 19/94	
58	ISSUED FOR A-AO-501 REUS AREA 19/94	
59	ISSUED FOR A-AO-501 REUS AREA 19/94	
60	ISSUED FOR A-AO-501 REUS AREA 19/94	
61	ISSUED FOR A-AO-501 REUS AREA 19/94	
62	ISSUED FOR A-AO-501 REUS AREA 19/94	
63	ISSUED FOR A-AO-501 REUS AREA 19/94	
64	ISSUED FOR A-AO-501 REUS AREA 19/94	
65	ISSUED FOR A-AO-501 REUS AREA 19/94	
66	ISSUED FOR A-AO-501 REUS AREA 19/94	
67	ISSUED FOR A-AO-501 REUS AREA 19/94	
68	ISSUED FOR A-AO-501 REUS AREA 19/94	
69	ISSUED FOR A-AO-501 REUS AREA 19/94	
70	ISSUED FOR A-AO-501 REUS AREA 19/94	
71	ISSUED FOR A-AO-501 REUS AREA 19/94	
72	ISSUED FOR A-AO-501 REUS AREA 19/94	
73	ISSUED FOR A-AO-501 REUS AREA 19/94	
74	ISSUED FOR A-AO-501 REUS AREA 19/94	
75	ISSUED FOR A-AO-501 REUS AREA 19/94	
76	ISSUED FOR A-AO-501 REUS AREA 19/94	
77	ISSUED FOR A-AO-501 REUS AREA 19/94	
78	ISSUED FOR A-AO-501 REUS AREA 19/94	
79	ISSUED FOR A-AO-501 REUS AREA 19/94	
80	ISSUED FOR A-AO-501 REUS AREA 19/94	
81	ISSUED FOR A-AO-501 REUS AREA 19/94	
82	ISSUED FOR A-AO-501 REUS AREA 19/94	
83	ISSUED FOR A-AO-501 REUS AREA 19/94	
84	ISSUED FOR A-AO-501 REUS AREA 19/94	
85	ISSUED FOR A-AO-501 REUS AREA 19/94	
86	ISSUED FOR A-AO-501 REUS AREA 19/94	
87	ISSUED FOR A-AO-501 REUS AREA 19/94	
88	ISSUED FOR A-AO-501 REUS AREA 19/94	
89	ISSUED FOR A-AO-501 REUS AREA 19/94	
90	ISSUED FOR A-AO-501 REUS AREA 19/94	
91	ISSUED FOR A-AO-501 REUS AREA 19/94	
92	ISSUED FOR A-AO-501 REUS AREA 19/94	
93	ISSUED FOR A-AO-501 REUS AREA 19/94	
94	ISSUED FOR A-AO-501 REUS AREA 19/94	
95	ISSUED FOR A-AO-501 REUS AREA 19/94	
96	ISSUED FOR A-AO-501 REUS AREA 19/94	
97	ISSUED FOR A-AO-501 REUS AREA 19/94	
98	ISSUED FOR A-AO-501 REUS AREA 19/94	
99	ISSUED FOR A-AO-501 REUS AREA 19/94	
100	ISSUED FOR A-AO-501 REUS AREA 19/94	
101	ISSUED FOR A-AO-501 REUS AREA 19/94	
102	ISSUED FOR A-AO-501 REUS AREA 19/94	
103	ISSUED FOR A-AO-501 REUS AREA 19/94	
104	ISSUED FOR A-AO-501 REUS AREA 19/94	
105	ISSUED FOR A-AO-501 REUS AREA 19/94	
106	ISSUED FOR A-AO-501 REUS AREA 19/94	
107	ISSUED FOR A-AO-501 REUS AREA 19/94	
108	ISSUED FOR A-AO-501 REUS AREA 19/94	
109	ISSUED FOR A-AO-501 REUS AREA 19/94	
110	ISSUED FOR A-AO-501 REUS AREA 19/94	
111	ISSUED FOR A-AO-501 REUS AREA 19/94	
112	ISSUED FOR A-AO-501 REUS AREA 19/94	
113	ISSUED FOR A-AO-501 REUS AREA 19/94	
114	ISSUED FOR A-AO-501 REUS AREA 19/94	
115	ISSUED FOR A-AO-501 REUS AREA 19/94	
116	ISSUED FOR A-AO-501 REUS AREA 19/94	
117	ISSUED FOR A-AO-501 REUS AREA 19/94	
118	ISSUED FOR A-AO-501 REUS AREA 19/94	
119	ISSUED FOR A-AO-501 REUS AREA 19/94	
120	ISSUED FOR A-AO-501 REUS AREA 19/94	
121	ISSUED FOR A-AO-501 REUS AREA 19/94	
122	ISSUED FOR A-AO-501 REUS AREA 19/94	
123	ISSUED FOR A-AO-501 REUS AREA 19/94	
124	ISSUED FOR A-AO-501 REUS AREA 19/94	
125	ISSUED FOR A-AO-501 REUS AREA 19/94	
126	ISSUED FOR A-AO-501 REUS AREA 19/94	
127	ISSUED FOR A-AO-501 REUS AREA 19/94	
128	ISSUED FOR A-AO-501 REUS AREA 19/94	
129	ISSUED FOR A-AO-501 REUS AREA 19/94	
130	ISSUED FOR A-AO-501 REUS AREA 19/94	
131	ISSUED FOR A-AO-501 REUS AREA 19/94	
132	ISSUED FOR A-AO-501 REUS AREA 19/94	
133	ISSUED FOR A-AO-501 REUS AREA 19/94	
134	ISSUED FOR A-AO-501 REUS AREA 19/94	
135	ISSUED FOR A-AO-501 REUS AREA 19/94	
136	ISSUED FOR A-AO-501 REUS AREA 19/94	
137	ISSUED FOR A-AO-501 REUS AREA 19/94	
138	ISSUED FOR A-AO-501 REUS AREA 19/94	
139	ISSUED FOR A-AO-501 REUS AREA 19/94	
140	ISSUED FOR A-AO-501 REUS AREA 19/94	
141	ISSUED FOR A-AO-501 REUS AREA 19/94	
142	ISSUED FOR A-AO-501 REUS AREA 19/94	
143	ISSUED FOR A-AO-501 REUS AREA 19/94	
144	ISSUED FOR A-AO-501 REUS AREA 19/94	
145	ISSUED FOR A-AO-501 REUS AREA 19/94	
146	ISSUED FOR A-AO-501 REUS AREA 19/94	
147	ISSUED FOR A-AO-501 REUS AREA 19/94	
148	ISSUED FOR A-AO-501 REUS AREA 19/94	
149	ISSUED FOR A-AO-501 REUS AREA 19/94	
150	ISSUED FOR A-AO-501 REUS AREA 19/94	
151	ISSUED FOR A-AO-501 REUS AREA 19/94	
152	ISSUED FOR A-AO-501 REUS AREA 19/94	
153	ISSUED FOR A-AO-501 REUS AREA 19/94	
154	ISSUED FOR A-AO-501 REUS AREA 19/94	
155	ISSUED FOR A-AO-501 REUS AREA 19/94	
156	ISSUED FOR A-AO-501 REUS AREA 19/94	
157	ISSUED FOR A-AO-501 REUS AREA 19/94	
158	ISSUED FOR A-AO-501 REUS AREA 19/94	
159	ISSUED FOR A-AO-501 REUS AREA 19/94	
160	ISSUED FOR A-AO-501 REUS AREA 19/94	
161	ISSUED FOR A-AO-501 REUS AREA 19/94	
162	ISSUED FOR A-AO-501 REUS AREA 19/94	
163	ISSUED FOR A-AO-501 REUS AREA 19/94	
164	ISSUED FOR A-AO-501 REUS AREA 19/94	
165	ISSUED FOR A-AO-501 REUS AREA 19/94	
166	ISSUED FOR A-AO-501 REUS AREA 19/94	
167	ISSUED FOR A-AO-501 REUS AREA 19/94	
168	ISSUED FOR A-AO-501 REUS AREA 19/94	
169	ISSUED FOR A-AO-501 REUS AREA 19/94	
170	ISSUED FOR A-AO-501 REUS AREA 19/94	
171	ISSUED FOR A-AO-501 REUS AREA 19/94	
172	ISSUED FOR A-AO-501 REUS AREA 19/94	
173	ISSUED FOR A-AO-501 REUS AREA 19/94	
174	ISSUED FOR A-AO-501 REUS AREA 19/94	
175	ISSUED FOR A-AO-501 REUS AREA 19/94	
176	ISSUED FOR A-AO-501 REUS AREA 19/94	
177	ISSUED FOR A-AO-501 REUS AREA 19/94	
178	ISSUED FOR A-AO-501 REUS AREA 19/94	
179	ISSUED FOR A-AO-501 REUS AREA 19/94	
180	ISSUED FOR A-AO-501 REUS AREA 19/94	
181	ISSUED FOR A-AO-501 REUS AREA 19/94	
182	ISSUED FOR A-AO-501 REUS AREA 19/94	
183	ISSUED FOR A-AO-501 REUS AREA 19/94	
184	ISSUED FOR A-AO-501 REUS AREA 19/94	
185	ISSUED FOR A-AO-501 REUS AREA 19/94	
186	ISSUED FOR A-AO-501 REUS AREA 19/94	
187	ISSUED FOR A-AO-501 REUS AREA 19/94	
188	ISSUED FOR A-AO-501 REUS AREA 19/94	
189	ISSUED FOR A-AO-501 REUS AREA 19/94	
190	ISSUED FOR A-AO-501 REUS AREA 19/94	
191	ISSUED FOR A-AO-501 REUS AREA 19/94	
192	ISSUED FOR A-AO-501 REUS AREA 19/94	
193	ISSUED FOR A-AO-501 REUS AREA 19/94	
194	ISSUED FOR A-AO-501 REUS AREA 19/94	
195	ISSUED FOR A-AO-501 REUS AREA 19/94	
196	ISSUED FOR A-AO-501 REUS AREA 19/94	
197	ISSUED FOR A-AO-501 REUS AREA 19/94	
198	ISSUED FOR A-AO-501 REUS AREA 19/94	
199	ISSUED FOR A-AO-501 REUS AREA 19/94	
200	ISSUED FOR A-AO-501 REUS AREA 19/94	

CONTRACTOR MUST CHECK AND VERIFY ALL DIMENSIONS ON THE JOB.

THIS DRAWING SHALL NOT BE USED FOR CONSTRUCTION PURPOSES UNLESS COUNTERSIGNED BY:

Zeidler Roberts Partnership Architects
315 Queen Street West / Toronto / Ontario

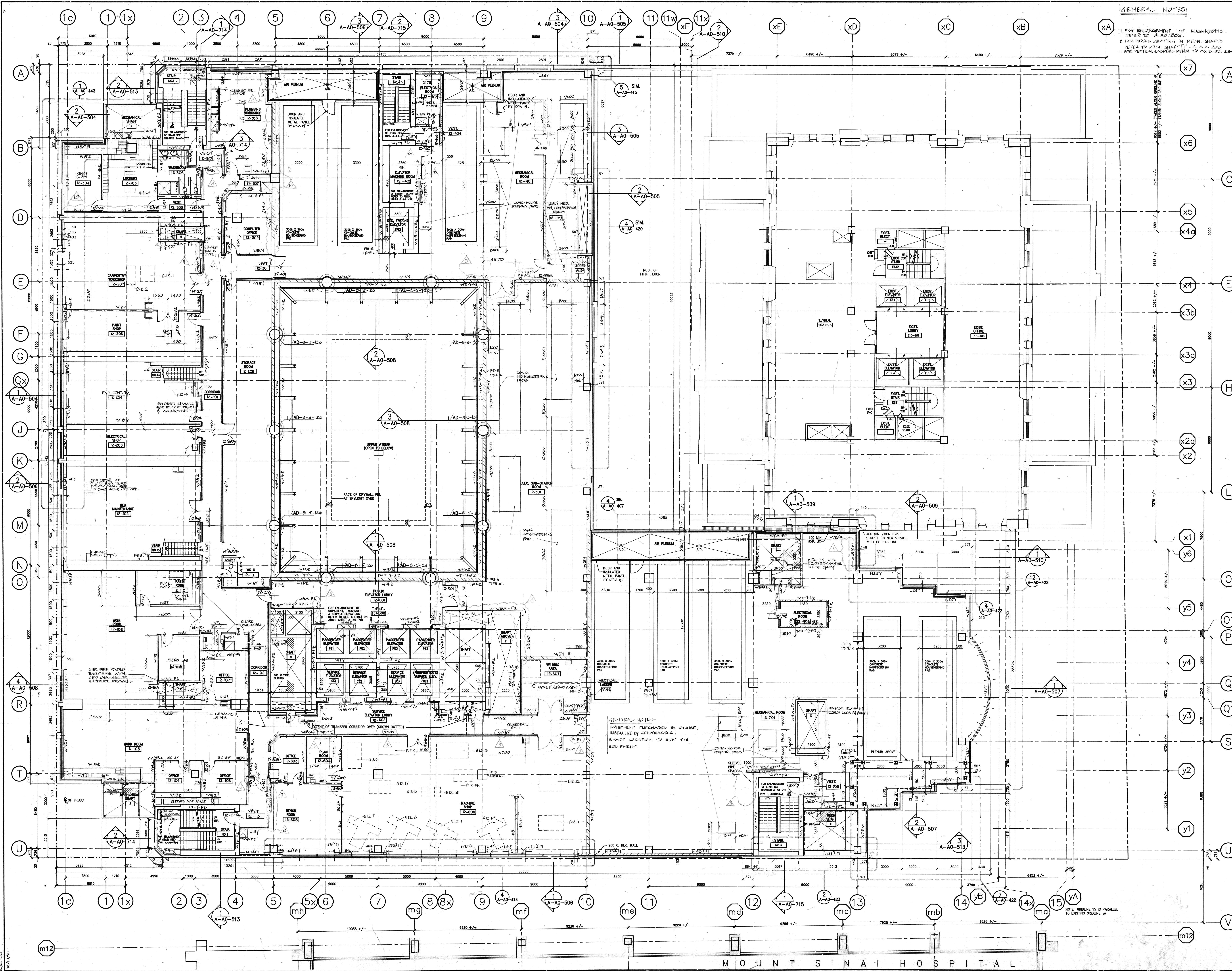
The Ontario Cancer Institute
The Princess Margaret Hospital

ONTARIO ASSOCIATION OF ARCHITECTS
A COMMITMENT TO EXCELLENCE
4400 SHEPPARD AVENUE EAST
SUITE 200
SCARBOROUGH, ONTARIO M1S 1T6
(416) 291-1111

PLAN FL 11

67T109-A-AO-214

REVISION NUMBER 15



GENERAL NOTES:
1. FOR ENLARGEMENT OF WASHROOMS REFER TO A-A-502.
2. FOR MEAL GRATING IN MECH. SHAFTS REFER TO MECH. SHAFT 11 A-A-502.
3. FOR VERTICAL JARVIS REFER TO A-A-502, 234.

- DETAIL SYMBOLS
- 1. WALL TYPES AT EXTERIOR WALLS FOR BACK-UP WALL ONLY. (SEE DETAILS FOR EXTERIOR WALL ASSEMBLY).
 - 2. WALL TYPES AT EXTERIOR WALLS SHOWN THE BACK-UP FOR THE SPANDED GLASS ONLY. (FOR VISION GLASS REFER TO DETAILS & ELEVATIONS.)
 - 3. PROVIDE WEARING SURFACE WATERPROOF AT ALL PLUMBING.
 - 4. PROVIDE PLASTIC CORNER GUARD AT DRYWALL AS INDICATED ON FLOOR PLANS.
 - 5. V. BARRIER & POUNDED INSULATION TYPE AT MECH. HALLWAY AS POUNDED ON THE DRAWING.
 - 6. PROVIDE 150MM HIGH CONCRETE CURB AT ALL ELECTRICAL ROOMS.
 - 7. FIRE EXTINGUISHERS SHALL BE CLASS A-2 TYPE EXCEPT THOSE MARKED AS TYPE "B" OR TYPE "C". ALL FIRE EXTINGUISHERS IN MECHANICAL ROOMS AND ELECTRICAL SHALL BE CLASS C TYPE 100C RATING. FIRE EXTINGUISHERS IN DIESEL OIL PUMP AND FLAMMABLE STORES SHALL BE CLASS B TYPE 100C RATING.
 - 8. ALL EQUIPMENT EXCEPT "S" SHALL BE N.I.C.

AS-1 # 356	JAN 17 / 96
AS-1 # 128	AUG 18 / 95
AS-1 # 171 REV.2	MAY 18 / 94
AS-1 # 171 REV.2	DEC 20 / 93
AS-1 # 171	OCT 28 / 93
AS-1 # 119	AUG 4 / 93
PRICE REQUEST	MAY 93
INTERIM CHANGE ORDER NO. 0088	JAN 1993
ISSUED FOR FINAL BLDG PERMIT	7 DEC 1992
REVISIONS FOR BUILDING DEPT. 12 NOV 92	
ISSUED FOR CONSTRUCTION	29 MAY 1992
ISSUED FOR TENDER	SEPTEMBER 1991
ISSUED FOR M.O.B. APPROVAL	3RD JULY 1991
ISSUED FOR BUILDING PERMIT	3RD JULY 1991
ISSUED FOR FIRE MARSHALL APPROVAL	3RD JULY 1991

NUMBER	DESCRIPTION	DATE
1	ALL DRAWINGS, SPECIFICATIONS AND RELATED DOCUMENTS ARE THE COPYRIGHT PROPERTY OF THE ARCHITECT AND MUST BE RETURNED UPON REQUEST. REPRODUCTION OF DRAWINGS, SPECIFICATIONS AND RELATED DOCUMENTS IN PART OR WHOLE IS FORBIDDEN WITHOUT THE ARCHITECT'S WRITTEN PERMISSION.	
2	CONTRACTOR MUST CHECK AND VERIFY ALL DIMENSIONS ON THE JOB.	
3	THIS DRAWING SHALL NOT BE USED FOR CONSTRUCTION PURPOSES UNLESS COUNTERSIGNED BY:	

Zeidler Roberts Partnership Architects
315 Queen Street West / Toronto / Ontario



**The Ontario Cancer Institute
The Princess Margaret Hospital**

NOTE: GRIDLINE 15 IS PARALLEL TO EXISTING GRIDLINE 14.

DRAWN: B.T./G.L./J.L. SCALE: 1:100
CHECKED: M.K. DATE:
SHEET TITLE: PLAN FL. 12
SHEET NUMBER: 871109-A-A-501-215

Project Name:	UHN PM Stem Cell Transplant Phase II Part A	Date Issued:	September 27, 2024
Quasar Project #:	HC-21-058		
Distribution			
Cannon Design Ltd.	Linda Vela		lvela@cannondesign.com
Cannon Design Ltd.	Jennifer Huynh		jhuynh@cannondesign.com
Quasar Consulting Group	Alexandra Blagojevic		alexandra.blagojevic@quasarcg.com
Quasar Consulting Group	Jerry Guidarelli		jerry.guidarelli@quasarcg.com
Quasar Consulting Group	Jomuel Estranero		jomuel.estraneo@quasarcg.com
Quasar Consulting Group	Manda Bobinac		manda.bobinac@quasarcg.com
Addendum #:	M-4		
Revision #:	0		

This Addendum forms part of the Contract Specifications and Drawings, and modifies the Bidding Documents, with Amendments and Additions noted below. This Addendum shall be added to the front of the specifications as issued. Bidders shall acknowledge receipt of this Addendum in the space provided in the Bid Form and include in bid amount.

This addendum includes modifications to the drawings and specifications as summarized below. Unless otherwise noted, all drawings listed below are attached herewith. Changes to drawings are highlighted with a revision bubble; include for all changes highlighted in the revision bubbles including, but not limited to, those items described below. Answers to Requests for Information below shall form part of the project specifications and are identified in bold following QCG (Quasar Consulting Group).

Requests for Information:

1. (252) In addendum 2 - Consultant addendum 1 Q/A 35 indicates "Total area of the new flooring will require surface preparation", is it a minor prep or major? If major preparation is required, please advise on the thickness of the preparation required..

QCG M: (252) Please refer to the response for RFI 252 in architectural Addendum 4 regarding the allowable live load for lifts if the contractor intends to use them:

The live load allowance that the scissor lift must fall within is summarized below based on location:

610 University: Level 2, 5, 10 – 7.2kPa (150psf)
 620 University: Level 5 (at ramp) – 6kPa (125psf)
 620 University: Level 10 – 2.4kPa (50psf)

Note: The new ramp falls within an area of Level 5 that was designed to 125psf (6kPa). The rest of Level 5, 620 University, is 75psf (3.6kPa), see enclosed existing drawing. From the existing drawings 620 University Level 10 have a design live load of 50psf (2.4kPa)

Note, that no other materials, hoarding, equipment etc. is to be stored in the bay and adjacent bays of where the scissor lift is to be used. Contractor to submit to structural consultant a proposed scissor lift and travel path for review and confirmation prior to use on site.

Changes to Drawings:

1. Refer to Drawing M1305B – HVAC – DEMO WORK – LEVEL 5B, not appended to this addendum, and revise Keynote 3 to read as follows:
 "CUT BACK AND REMOVE EXISTING KITCHEN GREASE EXHAUST DUCTWORK UP TO LEVEL 12, AS INDICATED. REMAINDER OF EXHAUST DUCTWORK AND ASSOCIATED EXHAUST FAN WAS REMOVED AS PART OF PREVIOUS PROJECT.



Quasar Consulting Group

A handwritten signature in black ink, appearing to read "AB", followed by a horizontal flourish line.

Alexandra Blagojevic, P.Eng.
Sector Lead

Project Name:	UHN PM Stem Cell Transplant Phase II Part B	Date Issued:	September 26, 2024
Quasar Project #:	HC-21-058		

Distribution

Cannon Design Ltd.	Linda Vela	lvela@cannondesign.com
Cannon Design Ltd.	Jennifer Huynh	jhuynh@cannondesign.com
Quasar Consulting Group	Alexandra Blagojevic	alexandra.blagojevic@quasarcg.com
Quasar Consulting Group	Jerry Guidarelli	jerry.guidarelli@quasarcg.com
Quasar Consulting Group	Jomuel Estranero	jomuel.estraneo@quasarcg.com
Quasar Consulting Group	Manda Bobinac	manda.bobinac@quasarcg.com

Addendum #: E-4

Revision #: 0

This Addendum forms part of the Contract Specifications and Drawings, and modifies the Bidding Documents, with Amendments and Additions noted below. This Addendum shall be added to the front of the specifications as issued. Bidders shall acknowledge receipt of this Addendum in the space provided in the Bid Form and include in bid amount.

This addendum includes modifications to the drawings and specifications as summarized below. Unless otherwise noted, all drawings listed below are attached herewith. Changes to drawings are highlighted with a revision bubble; include for all changes highlighted in the revision bubbles including, but not limited to, those items described below. Answers to Requests for Information below shall form part of the project specifications and are identified in bold following QCG (Quasar Consulting Group).

Requests for Information:

1. (252) In addendum 2 - Consultant addendum 1 Q/A 35 indicates "Total area of the new flooring will require surface preparation", is it a minor prep or major? If major preparation is required, please advise on the thickness of the preparation required..

QCG E: (252) Please refer to the response for RFI 252 in architectural Addendum 4 regarding the allowable live load for lifts if the contractor intends to use them:

The live load allowance that the scissor lift must fall within is summarized below based on location:

610 University: Level 2, 5, 10 – 7.2kPa (150psf)
 620 University: Level 5 (at ramp) – 6kPa (125psf)
 620 University: Level 10 – 2.4kPa (50psf)

Note: The new ramp falls within an area of Level 5 that was designed to 125psf (6kPa). The rest of Level 5, 620 University, is 75psf (3.6kPa), see enclosed existing drawing. From the existing drawings 620 University Level 10 have a design live load of 50psf (2.4kPa)

Note, that no other materials, hoarding, equipment etc. is to be stored in the bay and adjacent bays of where the scissor lift is to be used. Contractor to submit to structural consultant a proposed scissor lift and travel path for review and confirmation prior to use on site.

Changes to Drawings:

1. Drawing E-0101 – ELECTRICAL - 1ST FLOOR DEMOLITION & NEW WORK PLAN (MH)

- Modification to notes as clouded, to provide provisions to disconnect, reconnect and test shaft lighting affected by demolition.

2. Drawing E-0104 – ELECTRICAL - 4TH FLOOR DEMOLITION & NEW WORK PLAN (MHDU)

- Modification to notes as clouded, to provide provisions to disconnect, reconnect and test shaft lighting affected by demolition.

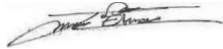
3. Drawing E-0106 – ELECTRICAL – ELECTRICAL KEY PLAN – LEVEL 06 (MHDU)

- Modification to notes as clouded, to provide provisions to disconnect, reconnect and test shaft lighting affected by demolition.

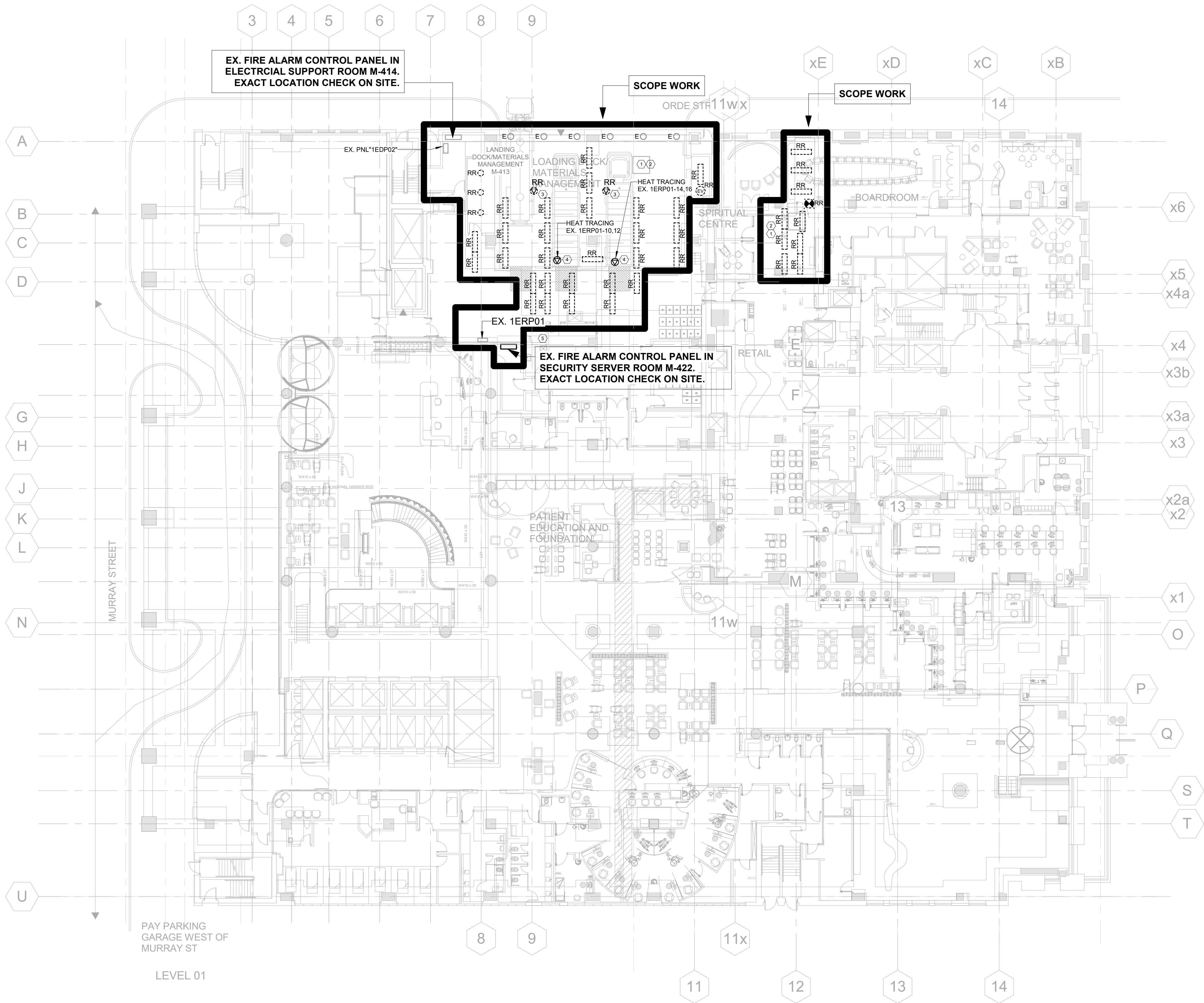
4. Drawing E-0109 – ELECTRICAL - 9TH FLOOR DEMOLITION & NEW WORK PLAN (DSC)

- Modification to notes as clouded, to provide provisions to disconnect, reconnect and test shaft lighting affected by demolition.

Quasar Consulting Group



Jomuel Estranero, P.Eng.
Electrical Engineer



1 ELECTRICAL - 1ST FLOOR DEMOLITION & NEW WORK PLAN
SCALE 1: 200

SHEET KEYNOTES	
1	REMOVE, RELOCATE AND CONNECT COMPLETE ALL CEILING DEVICES IN DENOTED AREAS TO ALLOW FOR MECHANICAL REWORK TO TAKE PLACE IN THE CEILING SPACE ABOVE. RE-VERIFICATION OF THE FIRE ALARM SYSTEM WILL BE REQUIRED. CONTRACTOR TO CONFIRM EXACT LOCATIONS AND QUANTITIES OF ALL CEILING DEVICES PRIOR TO TENDER CLOSE. CONTRACTOR TO INCLUDE FOR ADDITIONAL VISITS WITH THE UNDERSTANDING THAT DEMOLITION AND NEW WORK MAY NOT BE COMPLETED ON THE SAME DAY. ALL WORK SHALL BE COMPLETED AFTER HOURS TO ALLOW FOR NORMAL OPERATIONS TO CONTINUE DURING HOSPITAL OPERATING HOURS. REFER TO ARCHITECTURAL AND PLUMBING PLANS FOR ADDITIONAL INFORMATION.
2	ELECTRICAL CONTRACTOR TO PRICE FOR UP TO 5% ADDITIONAL DEVICES THAT MAY NOT BE CAPTURED IN PLAN DUE TO EXISTING SITE CONDITIONS.
3	REMOVE THE EXISTING JUNCTION BOX FOR EXISTING HEAT TRACING CONTROLLER. WIRING BACK TO SOURCE. GFI BREAKER FOR THE EXISTING HEAT TRACING SET TO "SPARE". UPDATE PANEL DIRECTORY AFTER COMPLETE.
4	PROVIDE NEW JUNCTION BOX FOR NEW HEAT TRACING CONTROLLER. PROVIDE 30A/2P GFI BREAKER IN EXISTING PANEL 1ERP01 AND WIRING FOR THE HEAT TRACING CONTROLLER. COORDINATE THE JUNCTION BOX WITH MECHANICAL ON SITE. CHECK EXISTING PANEL SPACE AND PANEL CAPACITY PRIOR TO INSTALLED. THE 30A/2P GFI BREAKER KIA RATING TO MARCH EXISTING PANEL KIA RATING.
5	UPDATE EXISTING FIRE ALARM PANEL TO SUIT NEW FIRE ALARM CIRCUITS PROVIDED. PROVIDE NEW SUB FIRE ALARM PANEL IF EXISTING PANEL SPACES ARE NOT ENOUGH.

KEY PLAN ELECTRICAL DEMO
& NEW SHEET GENERAL
NOTES

1	REMOVE, RELOCATE AND CONNECT COMPLETE ALL CEILING DEVICES IN DENOTED AREAS TO ALLOW FOR MECHANICAL REWORK TO TAKE PLACE IN THE CEILING SPACE ABOVE. RE-VERIFICATION OF THE FIRE ALARM SYSTEM WILL BE REQUIRED. CONTRACTOR TO CONFIRM EXACT LOCATIONS AND QUANTITIES OF ALL CEILING DEVICES PRIOR TO TENDER CLOSE. CONTRACTOR TO INCLUDE FOR ADDITIONAL VISITS WITH THE UNDERSTANDING THAT DEMOLITION AND NEW WORK MAY NOT BE COMPLETED ON THE SAME DAY. ALL WORK SHALL BE COMPLETED AFTER HOURS TO ALLOW FOR NORMAL OPERATIONS TO CONTINUE DURING HOSPITAL OPERATING HOURS. REFER TO ARCHITECTURAL AND PLUMBING PLANS FOR ADDITIONAL INFORMATION.
2	ELECTRICAL CONTRACTOR TO PRICE FOR UP TO 5% ADDITIONAL DEVICES THAT MAY NOT BE CAPTURED IN PLAN DUE TO EXISTING SITE CONDITIONS.
3	COORDINATE AND REFER TO ARCHITECTURAL CONSTRUCTION CONTROL PLANS G0501 AND G0502 FOR AREA OF CEILING WORKING THAT EFFECT CEILING MOUNTED POWER DEVICES, FIRE ALARM DEVICES, LOW VOLTAGE SYSTEM DEVICES AND LIGHTING FIXTURES. VERIFY THESE ITEMS' QUANTITY AND LOCATION PRIOR TO REMOVING. RECORDING THESE ITEMS' LOCATION FOR REINSTALLED BACK AFTER THE CEILING BACK.
4	LIGHTING, POWER CONDUITS AND CONNECTIONS IN SHAFTS TO BE DISCONNECT TO NEAREST JUNCTION BOXES. REINSTATE AND TEST AFTER NEW WORK IS COMPLETE. COORDINATE WITH MECHANICAL ON SITE FOR DETAILS.

Princess Margaret
Cancer Centre Stem Cell
Transplant 2

Part B
(MH, MHDU, DSC)

CANNONDESIGN

20 Victoria Street 5th floor
Toronto, ON Canada M5C 2N8
P: 416.915.0121
F: 416.955.0122

www.cannondesign.com



Mechanical & Electrical
250 Rowntree Dairy Rd,
Woodbridge, ON, Canada L4L 9J7
P: 905 507 0800

www.quasarcg.com

10	ISSUED FOR ADDENDUM E-4	2024-09-26
9	ISSUED FOR ADDENDUM E-3	2024-09-19
8	ISSUED FOR ADDENDUM E-2	2024-09-11
7	ISSUED FOR ADDENDUM E-1	2024-09-05
6	ISSUED FOR TENDER	2024-08-14
5	ISSUED FOR BUILDING PERMIT	2023-12-19
4	ISSUED FOR MOH 4.1 SUBMISSION	2023-09-25
3	ISSUED FOR 95% CD SUBMISSION	2023-09-06
2	ISSUED FOR 90% CD SUBMISSION	2023-07-31
1	ISSUED FOR 50% CD SUBMISSION	2023-05-08

Rev.	Description	Date
------	-------------	------

Drawing Title:

**ELECTRICAL - 1ST FLOOR
DEMOLITION & NEW
WORK PLAN (MH)**

As indicated

Project No.: 0020711.00 Checked by: JG

E0101

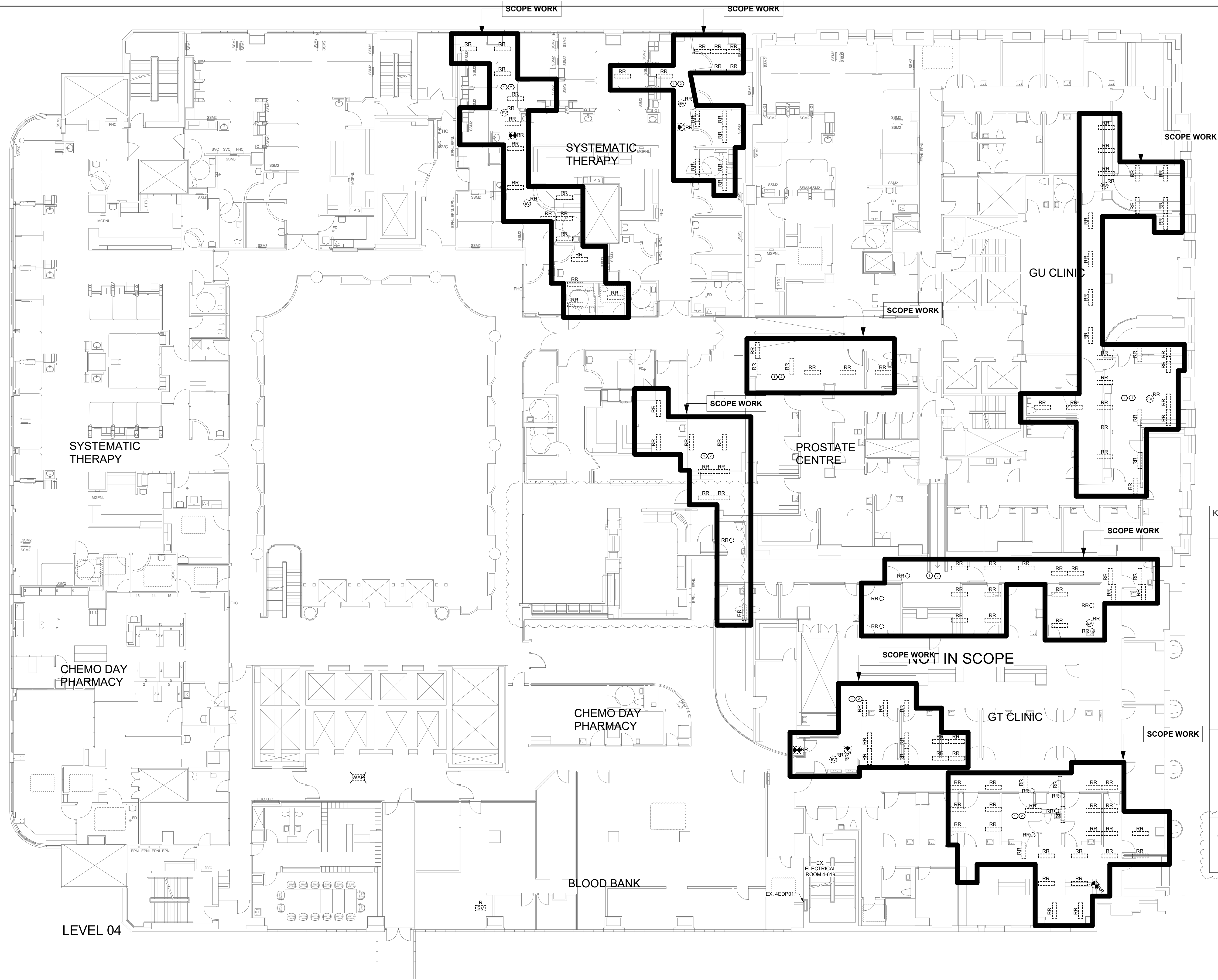
© 2019 The Cannon Corporation
All rights reserved. No part of this document may
be reproduced or utilized in any form, without prior
written authorization by The Cannon Corporation.
2024-09-26 1:04:42 PM

1

ELECTRICAL - 4TH FLOOR DEMOLITION & NEW WORK PLAN

SCALE 1: 200

LEVEL 04



KEY PLAN ELECTRICAL DEMO & NEW SHEET GENERAL NOTES

- 1 REMOVE, RELOCATE AND CONNECT COMPLETE ALL CEILING DEVICES IN DENOTED AREAS TO ALLOW FOR MECHANICAL REWORK TO TAKE PLACE IN THE CEILING SPACE ABOVE. RE-VERIFICATION OF THE FIRE ALARM SYSTEM WILL BE REQUIRED. CONTRACTOR TO CONFIRM EXACT LOCATIONS AND QUANTITIES OF ALL CEILING DEVICES PRIOR TO TENDER CLOSE. CONTRACTOR TO INCLUDE FOR ADDITIONAL VISITS WITH THE UNDERSTANDING THAT DEMOLITION AND NEW WORK MAY NOT BE COMPLETED ON THE SAME DAY. ALL WORK SHALL BE COMPLETED AFTER HOURS TO ALLOW FOR NORMAL OPERATIONS TO CONTINUE DURING HOSPITAL OPERATING HOURS. REFER TO ARCHITECTURAL AND PLUMBING PLANS FOR ADDITIONAL INFORMATION.
- 2 ELECTRICAL CONTRACTOR TO PRICE FOR UP TO 5% ADDITIONAL DEVICES THAT MAY NOT BE CAPTURED IN PLAN DUE TO EXISTING SITE CONDITIONS.
- 3 COORDINATE AND REFER TO ARCHITECTURAL CONSTRUCTION CONTROL PLANS G0501 AND G0502 FOR AREA OF CEILING WORKING THAT EFFECT CEILING MOUNTED POWER DEVICES, FIRE ALARM DEVICES, LOW VOLTAGE SYSTEM DEVICES AND LIGHTING FIXTURES. VERIFY THESE ITEMS' QUANTITY AND LOCATION PRIOR TO REMOVING. RECODING THESE ITEMS' LOCATION FOR REINSTALLED BACK AFTER THE CEILING BACK.
- 4 LIGHTING, POWER CONDUITS AND CONNECTIONS IN SHAFTS TO BE DISCONNECT TO NEAREST JUNCTION BOXES. REINSTALL AND TEST AFTER NEW WORK IS COMPLETE. COORDIANTE WITH MECHANICAL ON SITE FOR DETAILS.

Rev.	Description	Date
------	-------------	------

8	ISSUED FOR ADDENDUM E-4	2024-09-26
7	ISSUED FOR ADDENDUM E-3	2024-09-19
6	ISSUED FOR TENDER	2024-08-14
5	ISSUED FOR BUILDING PERMIT	2023-12-19
4	ISSUED FOR MOH 4.1 SUBMISSION	2023-09-25
3	ISSUED FOR 95% CD SUBMISSION	2023-09-06
2	ISSUED FOR 90% CD SUBMISSION	2023-07-31
1	ISSUED FOR 50% CD SUBMISSION	2023-05-08

Drawing Title:

**ELECTRICAL - 4TH
FLOOR DEMOLITION &
NEW WORK PLAN (MHDU)**

As indicated

Project No.: 0020711.00 Checked by: JG

E0104

© 2019 The Cannon Corporation.

Princess Margaret
Cancer Centre Stem Cell
Transplant 2

Part B
(MH, MHDU, DSC)

CANNONDESIGN

20 Victoria Street 5th floor
Toronto, ON Canada M5C 2N8
P: 416.915.0121
F: 416.955.0122

www.cannondesign.com



Mechanical & Electrical
250 Rowntree Dairy Rd.
Woodbridge, ON, Canada L4L 9J7
P: 905.507.0800

www.quasarcg.com

NO.	ISSUE	DATE
1	PROGRESS SET NO. 1	JUL 7/90
2	PROGRESS SET NO. 2	AUG 1/90
3	PROGRESS SET NO. 3	AUG 8/90
4	PROGRESS SET NO. 4	AUG 29/90
5	PROGRESS SET NO. 5	SEP 24/90
6	PROGRESS SET NO. 6	SEP 24/90
7	PROGRESS SET NO. 7	NOV 21/90
8	PROGRESS SET NO. 8	DEC 18/90
9	PROGRESS SET NO. 9	JAN 25/91
10	PROGRESS SET NO. 10	MAR 7/91
11	PROGRESS SET NO. 11	MAY 17/91

- NOTES:
- (1) EXACT LOCATION TO BE DETERMINED ON SITE. REFER TO KITCHEN EQUIPMENT SCHEDULE FOR INFORMATION ON EQUIPMENT.
 - (2) HOUSE KEEPING PAD FOR EQUIPMENT SHOWN IN THIS ROOM SHALL BE PROVIDED BY DIVISION 25 STRUCTURAL.
 - (3) KEEP CLEAR FOR EQUIPMENT REMOVAL.

NO.	REVISIONS	DATE
1	ISSUED FOR TENDER	JUL 15/91
2	ISSUED FOR ECE APPROVAL	JUL 15/91
3	ISSUED FOR ECE APPROVAL	JUL 15/91
4	ISSUED FOR BUILDING PERMIT	JUL 15/91

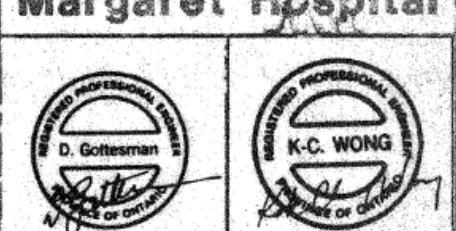
ALL DRAWINGS, SPECIFICATIONS AND RELATED DOCUMENTS ARE THE COPYRIGHT PROPERTY OF THE CONSULTANT AND SHALL BE RETURNED UPON REQUEST. REPRODUCTION OF DRAWINGS, SPECIFICATIONS AND RELATED DOCUMENTS IN WHOLE OR IN PART IS FORBIDDEN WITHOUT THE CONSULTANT'S WRITTEN PERMISSION.

CONTRACTOR SHALL CHECK AND VERIFY ALL DIMENSIONS ON THE JOB. THE DRAWING SHALL NOT BE USED FOR CONSTRUCTION PURPOSES UNLESS COUNTERSIGNED BY:

THE ECE GROUP LTD.
CONSULTING ENGINEERS
205 Lamb Road
Don Mills, Ontario M3B 2Y1
(416) 440-8000 Fax (416) 440-2878



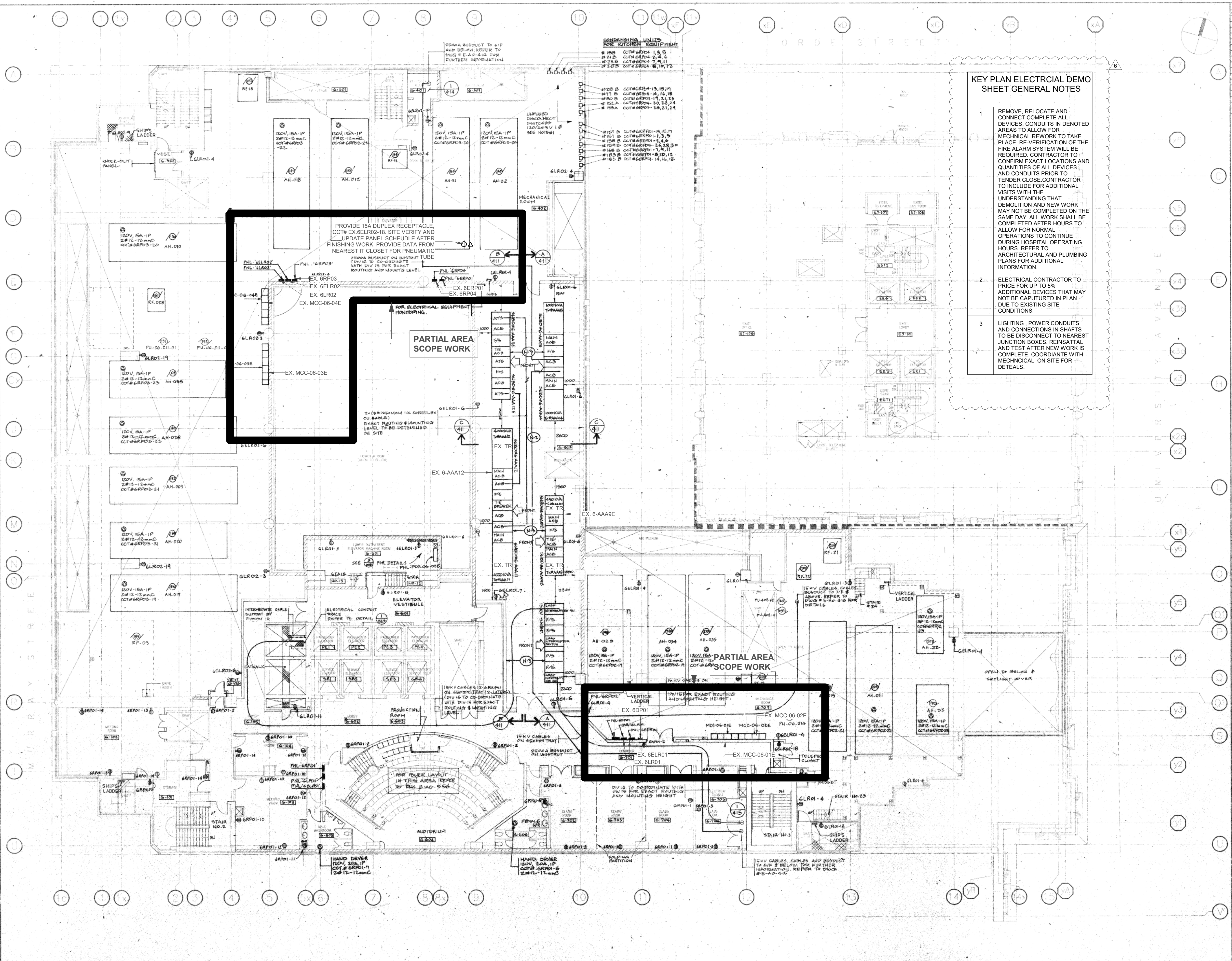
The Ontario
Cancer Institute
The Princess
Margaret Hospital



DATE: K.K. DRAWN: 1:100
CHECKED: K.G.W. DATE: JUNE '90
PROJECT: 6TH FLOOR POWER SYSTEM LAYOUT
SHEET: E-AO-209 OF 1

KEY PLAN ELECTRICAL DEMO
SHEET GENERAL NOTES

- REMOVE, RELOCATE AND CONNECT COMPLETE ALL DEVICES. CONDUITS IN DENOTED AREAS TO ALLOW FOR MECHANICAL REWORK TO TAKE PLACE. REVERIFICATION OF THE FIRE ALARM SYSTEM WILL BE REQUIRED. CONTRACTOR TO CONFIRM EXACT LOCATIONS AND QUANTITIES OF ALL DEVICES AND CONDUITS PRIOR TO TENDER. CLOSE CONTRACTOR TO UNDERSTANDING THAT DEMOLITION AND NEW WORK MAY NOT BE COMPLETED ON THE SAME DAY. ALL WORK SHALL BE COMPLETED AFTER HOURS TO ALLOW FOR NORMAL OPERATIONS TO CONTINUE DURING HOSPITAL OPERATING HOURS. REFER TO ARCHITECTURAL AND PLUMBING PLANS FOR ADDITIONAL INFORMATION.
- ELECTRICAL CONTRACTOR TO PRICE FOR UP TO 5% ADDITIONAL DEVICES THAT MAY NOT BE CAPTURED IN PLAN DUE TO EXISTING SITE CONDITIONS.
- LIGHTING - POWER CONDUITS AND CONNECTIONS IN SHAFTS TO BE DISCONNECTED TO NEAREST JUNCTION BOXES. REINSTATE AND TEST AFTER NEW WORK IS COMPLETE. COORDINATE WITH MECHANICAL ON SITE FOR DETAILS.



ELECTRICAL KEY PLAN - PMH 610 LEVEL 06 & PMH 620 LEVEL 06

SCALE: 1:50

Drawing Title:

ELECTRICAL KEY PLAN -
LEVEL 06 (MHDU)

As indicated

Project No.: 0020711.00 Checked by: JG

E0106

Princess Margaret
Cancer Centre Stem Cell
Transplant 2

Part B
(MH, MHDU, DSC)

CANNONDESIGN

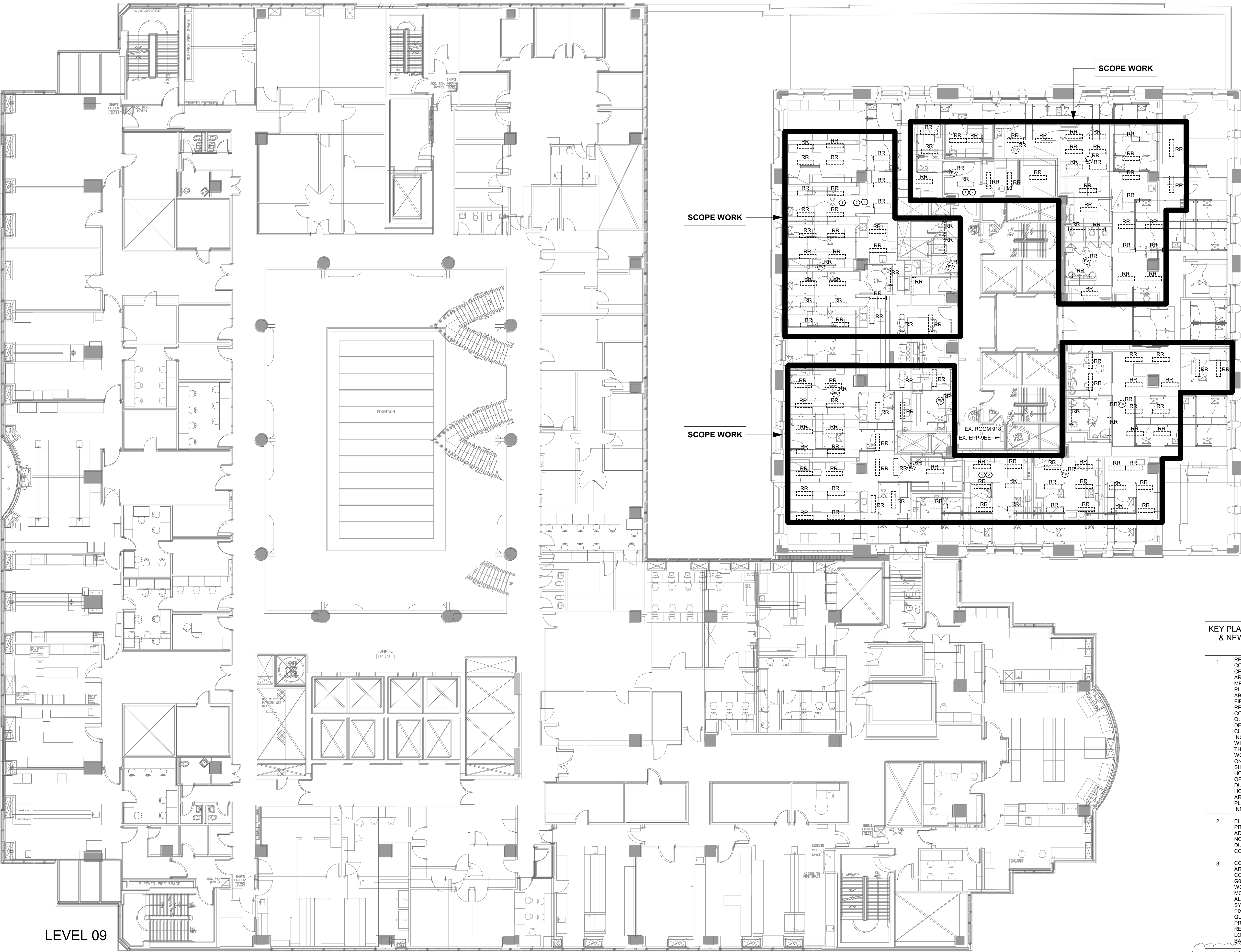
20 Victoria Street 5th floor
Toronto, ON Canada M5C 2N8
P: 416.915.0121
F: 416.955.0122

www.cannondesign.com



Mechanical & Electrical
250 Rowntree Dairy Rd,
Woodbridge, ON, Canada L4L 9J7
P: 905 507 0800

www.quasarcg.com



KEY PLAN ELECTRICAL DEMO
& NEW SHEET GENERAL
NOTES

- 1 REMOVE, RELOCATE AND CONNECT COMPLETE ALL CEILING DEVICES IN DENOTED AREAS TO ALLOW FOR MECHANICAL REWORK TO TAKE PLACE IN THE CEILING SPACE ABOVE. RE-VERIFICATION OF THE FIRE ALARM SYSTEM WILL BE REQUIRED. CONTRACTOR TO CONFIRM EXACT LOCATIONS AND QUANTITIES OF ALL CEILING DEVICES PRIOR TO TENDER. CLOSE CONTRACTOR TO INCLUDE FOR ADDITIONAL VISITS WITH THE UNDERSTANDING THAT DEMOLITION AND NEW WORK MAY NOT BE COMPLETED ON THE SAME DAY. ALL WORK SHALL BE COMPLETED AFTER HOURS TO ALLOW FOR NORMAL OPERATIONS TO CONTINUE DURING HOSPITAL OPERATING HOURS. REFER TO ARCHITECTURAL AND PLUMBING PLANS FOR ADDITIONAL INFORMATION.
- 2 ELECTRICAL CONTRACTOR TO PRICE FOR UP TO 5% ADDITIONAL DEVICES THAT MAY NOT BE CAPTURED IN PLAN DUE TO EXISTING SITE CONDITIONS.
- 3 COORDINATE AND REFER TO ARCHITECTURAL CONSTRUCTION CONTROL PLANS G0501 AND G0502 FOR AREA OF CEILING WORKING THAT EFFECT CEILING MOUNTED POWER DEVICES, FIRE ALARM DEVICES, LOW VOLTAGE SYSTEM DEVICES AND LIGHTING FIXTURES. VERIFY THESE ITEMS' QUANTITY AND LOCATION PRIOR TO REMOVING. RECODING THESE ITEMS' LOCATION FOR REINSTALLED BACK AFTER THE CEILING BACK.
- 4 LIGHTING, POWER CONDUITS AND CONNECTIONS IN SHAFTS TO BE DISCONNECT TO NEAREST JUNCTION BOXES. REINSTATE AND TEST AFTER NEW WORK IS COMPLETE. COORDINATE WITH MECHANICAL ON SITE FOR DETAILS.

7	ISSUED FOR ADDENDUM E-4	2024-09-26
6	ISSUED FOR ADDENDUM E-3	2024-08-14
5	ISSUED FOR TENDER	2023-12-19
4	ISSUED FOR BUILDING PERMIT	2023-09-25
3	ISSUED FOR MOH 4.1 SUBMISSION	2023-09-06
2	ISSUED FOR 95% CD SUBMISSION	2023-07-31
1	ISSUED FOR 90% CD SUBMISSION	

Rev.	Description	Date
------	-------------	------

Drawing Title:

ELECTRICAL - 9TH
FLOOR DEMOLITION &
NEW WORK PLAN (DSC)

As indicated

Project No.: 0020711.00 Checked by: JG

E0109