

THE BID DOCUMENTS, CONDITIONS OF CONTRACT, DRAWINGS AND SPECIFICATIONS ARE HEREBY AMENDED, AS FOLLOWS:

---

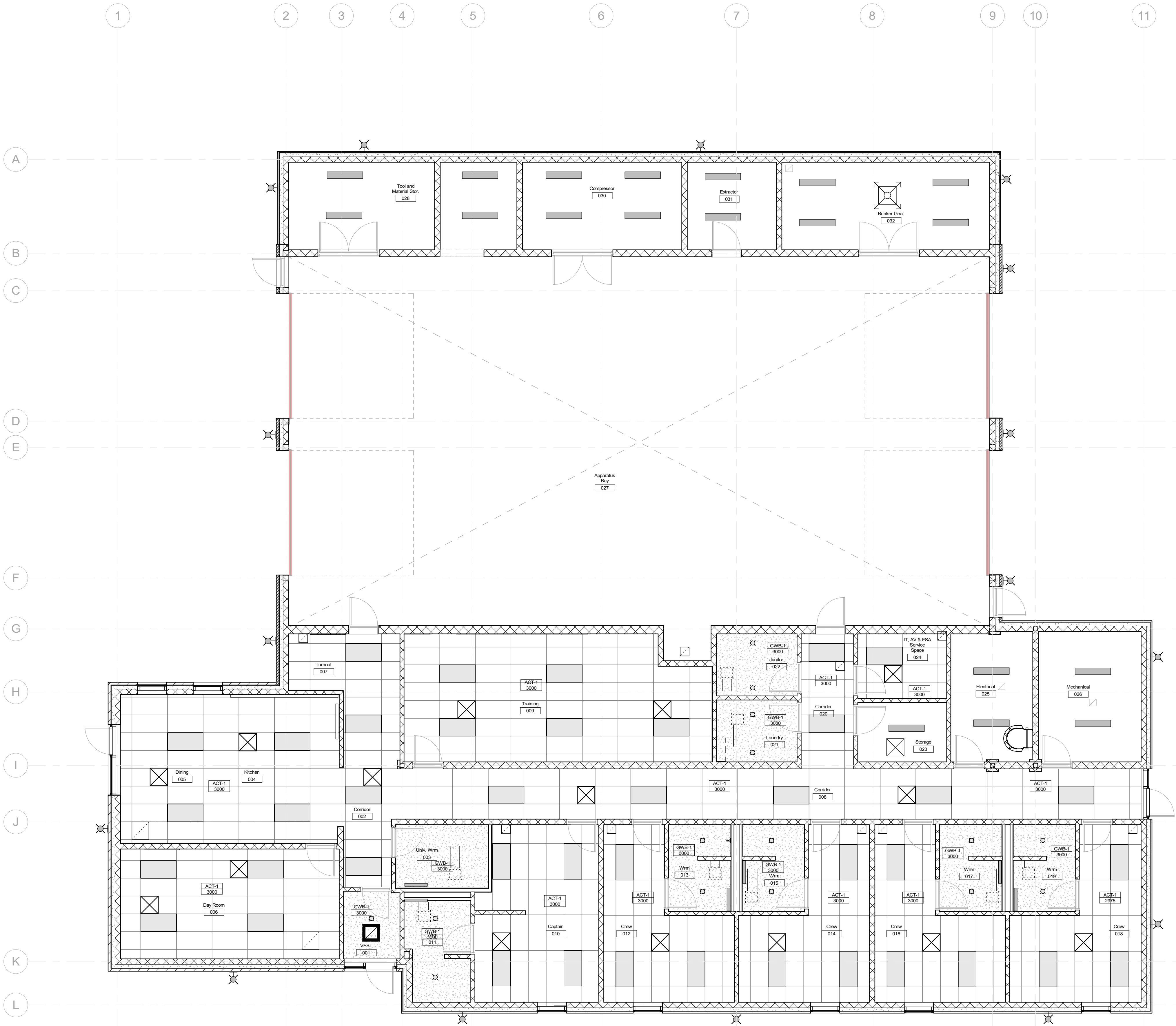
**Amendment 1**  
**ARCHITECTURAL DRAWINGS**

- 1.1 Add sheet A701 Reflected Ceiling Plan, issued herewith.

**END OF ARCHITECTURAL ADDENDUM No. 1**

DISCLAIMER: For the purposes of this procurement process, all communications in relation to this ITT or this project must be made through the Bidding System using the "Submit a Question" link associated with this bid opportunity ("ITT Contact"), unless specifically instructed within the ITT document. Bidders and their representatives are not permitted to contact any employees, officers, agents, elected or appointed officials or other representatives of the City, other than the ITT Contact. Failure to adhere to this rule may result in the disqualification of the bidder and the rejection of the bidder's bid.

B:\M\360\22030 - Barrie Fire Station 6\22030 - Barrie Fire 6\_12021.rvt  
2024-03-12 8:23:55 AM



1 Level 1 Reflected Ceiling Plan  
A701 1 : 75

DISCLAIMER: For the purposes of this procurement process, all communications in relation to this ITT or this project must be made through the Bidding System using the "Submit a Question" link associated with this bid opportunity ("ITT Contact"), unless specifically instructed within the ITT document. Bidders and their representatives are not permitted to contact any employees, officers, agents, elected or appointed officials or other representatives of the City, other than the ITT Contact. Failure to adhere to this rule may result in the disqualification of the bidder and the rejection of the bidder's bid.

REFLECTED CEILING PLAN NOTES:

1

COORDINATE FULLY WITH MECHANICAL & ELECTRICAL DRAWINGS & SPECIFICATIONS TO ENSURE PROPER PLACEMENT OF ALL LIGHTS, GRILLES, EXHAUST FANS, DIFFUSERS ETC. RELATING TO THE REFLECTED CEILING PLAN LAYOUT.

2

ENCLOSE ALL EXPOSED STEEL STRUCTURE SUPPORTING FLOOR LOADS WITH (2) LAYERS OF 19mm FIRE-RATED GYPSUM WALL BOARD ON METAL FRAMING ASSEMBLY TO PROVIDE A 1-HOUR FIRE-RESISTANCE RATING. ALL DETAILS MUST COMPLY.

3

REFER TO ELECTRICAL DRAWINGS FOR LOCATIONS OF FIXTURES FLUSH WITH GYPSUM WALL BOARD CEILING AND REQUIRE CAREFUL FINISHING.

REFLECTED CEILING PLAN LEGEND:

SUPPLY AIR DIFFUSER AS PER MECH. DWGS

RETURN AIR DIFFUSER AS PER MECH. DWGS

EXHAUST GRILLE AS PER MECH. DWGS

SURFACE MOUNTED LUMINAIRE AS PER ELEC. DWGS

RECESSED LUMINAIRE AS PER ELEC. DWGS

RECESSED LIGHT FIXTURE AS PER ELEC. DWGS

WALL MOUNTED LIGHT FIXTURE AS PER ELEC. DWGS

610 x 1220 LAY-IN CEILING TILE

RECESSED CEILING MOUNTED ELECTRIC HEATER AS PER MECH. DWGS

No.	Revision	Date
10	Addendum #1	2024_03_11
9	Issued for Tender	2024_02_23
8	Issued for 100% Contract Documents	2023_11_24
7	Issued for 90% Contract Documents	2023_11_10
6	Issued for Building Permit	2023_11_07
5	Issued for Site Plan Re-Submission	2023_11_07
4	Issued for 75% Contract Documents	2023_10_13
3	Issued for Progress	2023_09_25
2	Design Development Approval	2023_08_25
1	Issued for 100% Design Development	2023-06-27

Orientation

PROJECT NORTH

Seal

ONTARIO ASSOCIATION OF ARCHITECTS

GERY P. PILON

LICENCE 5542

All dimensions to be checked and verified on the job by the Contractor. Any discrepancies are to be reported to the Consultant prior to action. Only the latest approved drawings to be used for construction in conformance with all applicable codes, by-laws and regulations. All drawings remain the property of the Consultant.

© Copyright Reserved.  
These drawings and all that is represented herein are the exclusive property of Salter Pilon Architecture Inc.  
They may not be used or reproduced without written permission from Salter Pilon Architecture Inc.

salterpilon  
architecture

151 Ferris Lane, Suite 400 Barrie, Ontario L4M 6C1  
salterpilon.com t: 705.737.3530

Project Information  
Barrie Fire Station 6

845 Mapleview Drive East, Barrie Ontario

For  
Barrie Fire and Emergency Services

Drawing Title  
Reflected Ceiling Plan

Date	2024_03_11	Project No	Drawing No
Drawn by	Author	22030	A701
Scale	As indicated		