

MECHANICAL DRAWING LIST	
Sheet Number	Sheet Name
M0001	MECHANICAL DRAWING LIST
M0201	EQUIPMENT SCHEDULE
M1101	DEMOLITION PLAN - BASEMENT
M1102	DEMOLITION PLAN - GROUND FLOOR
M2101	PLUMBING - BASEMENT
M2102	PLUMBING - GROUND FLOOR
M3101	DRAINAGE - BASEMENT
M3102	DRAINAGE - GROUND FLOOR
M5101	HVAC - BASEMENT
M5102	HVAC - GROUND FLOOR

CLIENT

CITY OF TORONTO



Corporate Real Estate Management

Project Management Office

Metro Hall Toronto, ON

M5V 3C6

COPYRIGHT
This drawing has been prepared solely for the intended use. Thus any reproduction or distribution for any purpose other than authorized by IBI Group is forbidden. Written dimensions shall have precedence over scaled dimensions. Contractors shall verify and be responsible for all dimensions and conditions on the job, and IBI Group shall be informed of any variations from the dimensions and conditions shown on the drawing. Shop drawings shall be submitted to IBI Group for general conformance before proceeding with fabrication.

IBI Group Professional Services (Canada) Inc.
is a member of the IBI Group of companies

ISSUES		
No.	DESCRIPTION	DATE
00	ISSUED FOR CONSTRUCTION	2023-03-13

CONSULTANTS

SEAL



PRIME CONSULTANT



IBI GROUP
175 Galaxy Blvd, Unit 100
Toronto, ON M9W 0C9, Canada
tel 416 679 1930 fax 416 675 4620
ibigroup.com

PROJECT TITLE
CITY OF TORONTO
ACCESSIBILITY UPGRADES

PROJECT ADDRESS

SCARBOROUGH ARTS
COUNCIL
1859 KINGSTON RD.

PROJECT NO:
122260

DRAWN BY:
K.DURUKAN

CHECKED BY:
B.LIAO

PROJECT MGR:
F.BOLOURIAN

APPROVED BY:
S.LIU

SHEET TITLE
MECHANICAL DRAWING
LIST

SHEET NUMBER

G28-101-M0001

ISSUE

00

EXHAUST FAN SCHEDULE									
TAG NO.	SERVICE	MANUFACTURER/ MODEL NO.	FAN			MOTOR			NOTES
			CAPACITY (LPS)	S.P. (Pa)	TYPE	HP	RPM	V/Ph/Hz	
EF-01	WASHROOM - 008	GREENHECK SP-L50	24	31	CEILING FAN, DIRECT DRIVE	0.02	800	115/1/60	CONTROLLED BY MANUAL SWITCH, C/W EXHAUST GRILLE, DISCONNECT SWITCH, BACKDRAFT DAMPER, WEATHERHOOD AND RECTANGULAR DUCT ,CONNECTOR, PROVIDE MOUNTING SUPPORT FOR PEDANT MOUNTING ON CEILING
EF-02	OFFICE AREA - 002	GREENHECK CSP-A125	50	93.3	INLINE FAN, DIRECT DRIVE	0.03	980	115/1/60	CONTROLLED BY MANUAL SWITCH, DISCONNECT SWITCH, BACKDRAFT DAMPER, WEATHERHOOD AND RECTANGULAR DUCT CONNECTOR
EF-03	UNIVERSAL WASHROOM - 102	GREENHECK SP-L50	24	31	CEILING FAN, DIRECT DRIVE	0.02	800	115/1/60	CONTROLLED BY LIGHTING SWITCH, C/W EXHAUST GRILLE, DISCONNECT SWITCH, BACKDRAFT DAMPER, WEATHERHOOD AND RECTANGULAR DUCT CONNECTOR

ELECTRICAL HEATER SCHEDULE							
SERVICE	MANUFACTURER/ MODEL NO.	CAPACITY OUTPUT (KW)	V/Ph/Hz	WEIGHT (KG)	FAN		NOTES
					POWER (KW)	FLOW (LPS)	
CORRIDOR - 001	OUELLET OAC02000-T	2	240/1/60	10.9	-	75.5	PROVIDE DISCONNECT SWITCH AND BUILT-IN THERMOSTAT
CORRIDOR - 006	OUELLET OAC02000-T	2	240/1/60	10.9	-	75.5	PROVIDE DISCONNECT SWITCH AND BUILT-IN THERMOSTAT
PLATFORM LIFT - E1	OUELLET OAC02000-T	2	240/1/60	10.9	-	75.5	PROVIDE DISCONNECT SWITCH AND BUILT-IN THERMOSTAT
VESTIBULE - 101	OUELLET OAC02000-T	2	240/1/60	10.9	-	75.5	PROVIDE DISCONNECT SWITCH AND BUILT-IN THERMOSTAT

CLIENT

CITY OF TORONTO



CITY OF TORONTO

Corporate Real Estate Management

Project Management Office

Metro Hall Toronto, ON

MSV 3C6

COPYRIGHT
This drawing has been prepared solely for the intended use. Thus any reproduction or distribution for any purpose other than authorized by IBI Group is forbidden. Written dimensions shall have precedence over scaled dimensions. Contractors shall verify and be responsible for all dimensions and conditions on the job, and IBI Group shall be informed of any variations from the dimensions and conditions shown on the drawing. Shop drawings shall be submitted to IBI Group for general conformance before proceeding with fabrication.

IBI Group Professional Services (Canada) Inc.
is a member of the IBI Group of companies

ISSUES		
No.	DESCRIPTION	DATE
00	ISSUED FOR CONSTRUCTION	2023-03-13

CONSULTANTS

SEAL



PRIME CONSULTANT



IBI GROUP
175 Galaxy Blvd, Unit 100
Toronto, ON M9W 0C9, Canada
tel 416 679 1930 fax 416 675 4620
ibigroup.com

PROJECT TITLE
CITY OF TORONTO
ACCESSIBILITY UPGRADES

PROJECT ADDRESS

SCARBOROUGH ARTS
COUNCIL
1859 KINGSTON RD.

PROJECT NO:
122260

DRAWN BY:
K.DURUKAN

CHECKED BY:
B.LIAO

PROJECT MGR:
F.BOLOURIAN

APPROVED BY:
S.LIU

SHEET TITLE
EQUIPMENT SCHEDULE

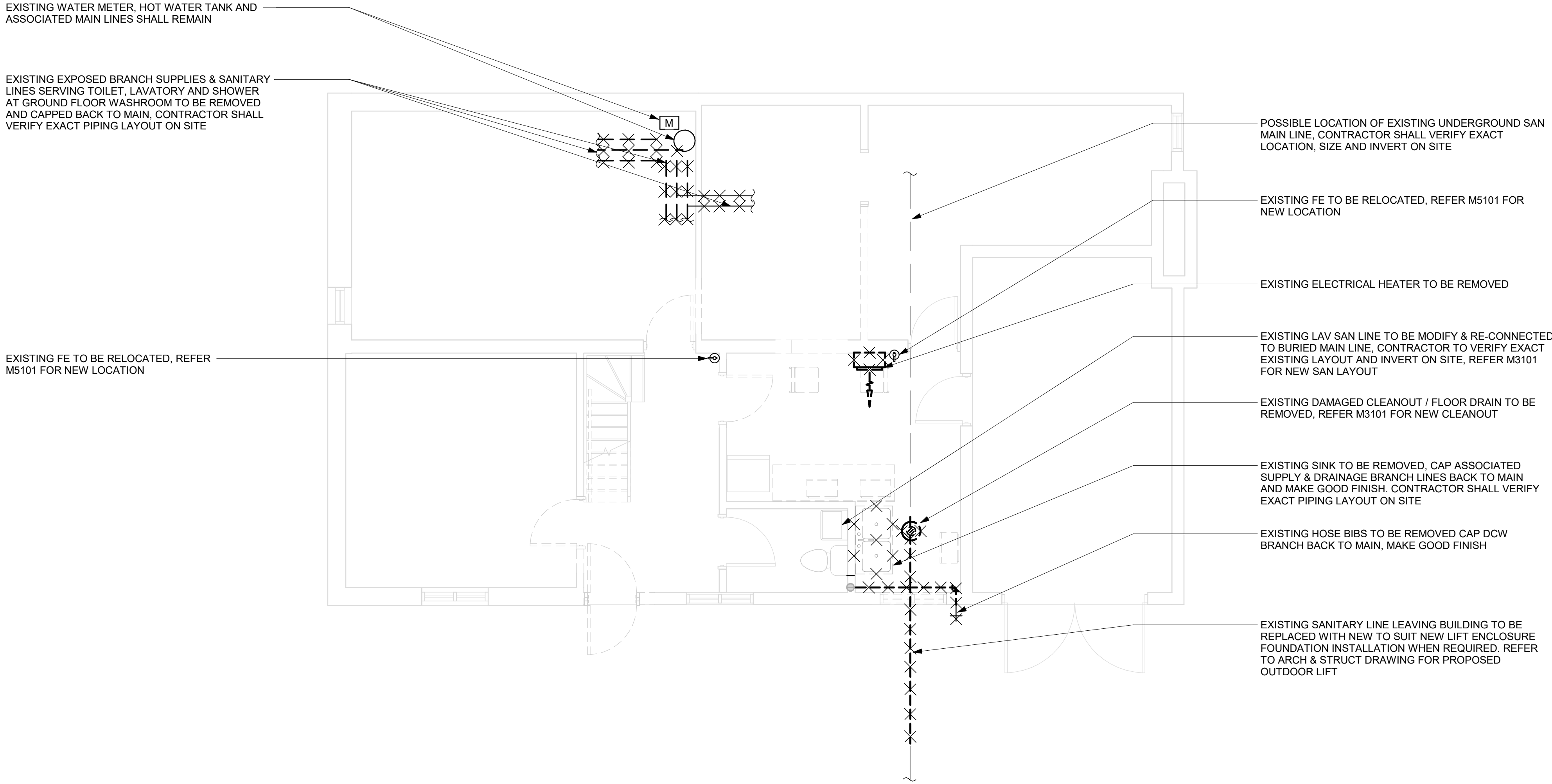
SHEET NUMBER

G28-101-M0201

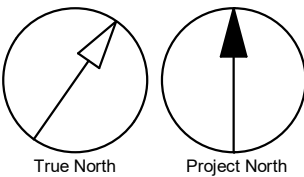
ISSUE

00

2023-03-06 11:44:23 AM




- GENERAL NOTES:
1. CONTRACTOR TO VERIFY SITE CONDITION.
 2. REMOVE AND CAP EXISTING SERVICES AS SHOWN ON THE DRAWING.
 3. ALL EXISTING SERVICES SHALL REMAIN UNLESS OTHERWISE NOTED.



CLIENT

CITY OF TORONTO



Corporate Real Estate Management
Project Management Office
Metro Hall Toronto, ON
MSV 3C6

COPYRIGHT

This drawing has been prepared solely for the intended use, thus any reproduction or distribution for any purpose other than authorized by IBI Group is forbidden. Written dimensions shall have precedence over scaled dimensions. Contractors shall verify and be responsible for all dimensions and conditions on the job, and IBI Group shall be informed of any variations from the dimensions and conditions shown on the drawing. Shop drawings shall be submitted to IBI Group for general concurrence before proceeding with fabrication.


IBI Group Professional Services (Canada) Inc.
is a member of the IBI Group of companies

ISSUES


No.	DESCRIPTION	DATE
00	ISSUED FOR CONSTRUCTION	2023-03-13

CONSULTANTS

SEAL



PRIME CONSULTANT



IBI GROUP

175 Galaxy Blvd, Unit 100
Toronto, ON M9W 0C9, Canada
tel 416 679 1930 fax 416 675 4620
ibigroup.com

PROJECT TITLE

CITY OF TORONTO

ACCESSIBILITY UPGRADES

PROJECT ADDRESS

SCARBOROUGH ARTS COUNCIL

1859 KINGSTON RD.

PROJECT NO:
122260

DRAWN BY:
K.DURUKAN

CHECKED BY:
B.LIAO

PROJECT MGR:
F.BOLOURIAN

APPROVED BY:
S.LIU

SHEET TITLE

DEMOLITION PLAN - BASEMENT

SHEET NUMBER

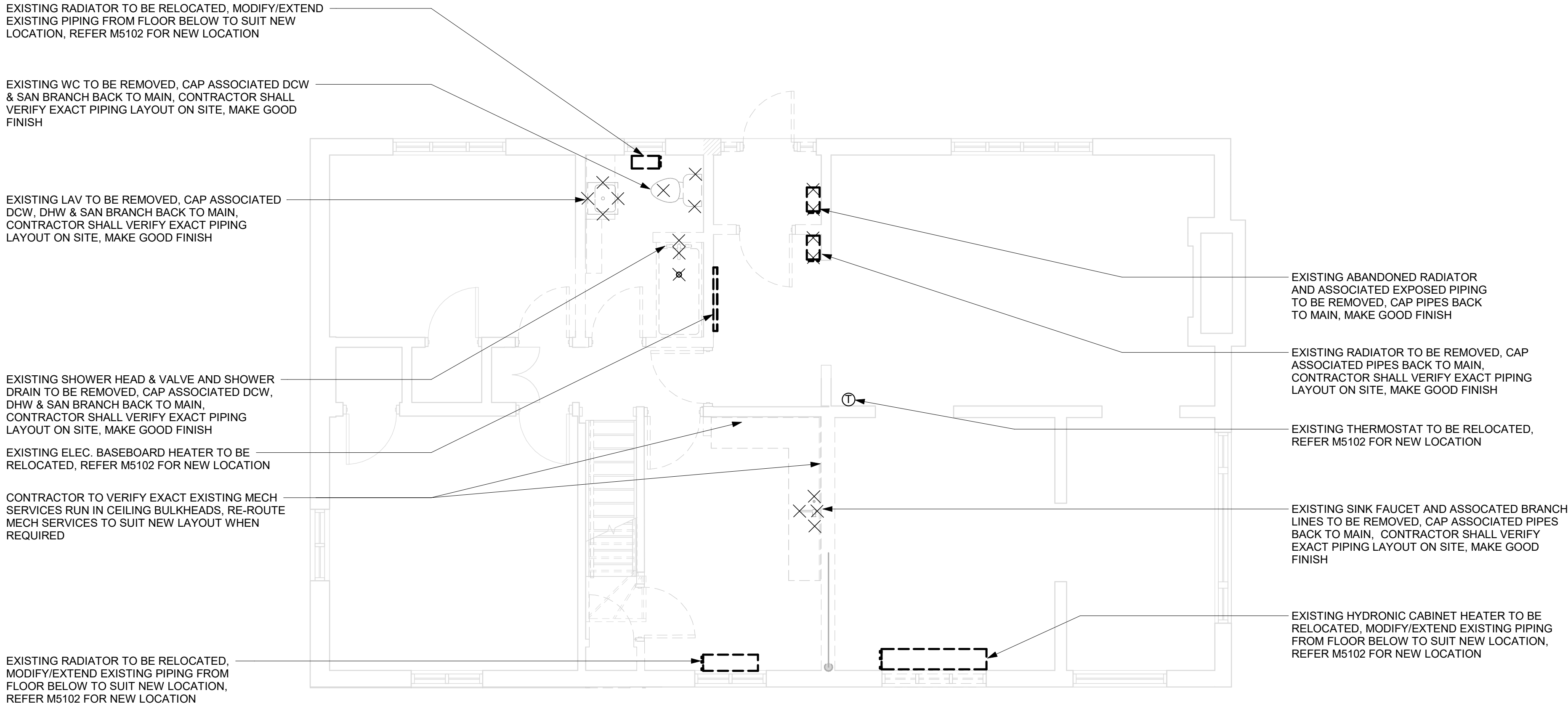
G28-101-M1101

ISSUE

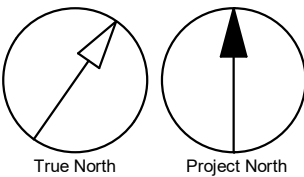
00

2023-03-06 11:44:24 AM

Scale 1:50




- GENERAL NOTES:
1. CONTRACTOR TO VERIFY SITE CONDITION.
 2. REMOVE AND CAP EXISTING SERVICES AS SHOWN ON THE DRAWING.
 3. ALL EXISTING SERVICES SHALL REMAIN UNLESS OTHERWISE NOTED.



CLIENT

CITY OF TORONTO



Corporate Real Estate Management
Project Management Office
Metro Hall Toronto, ON
MSV 3C6

COPYRIGHT

This drawing has been prepared solely for the intended use, thus any reproduction or distribution for any purpose other than authorized by IBI Group is forbidden. Written dimensions shall have precedence over scaled dimensions. Contractors shall verify and be responsible for all dimensions and conditions on the job, and IBI Group shall be informed of any variations from the dimensions and conditions shown on the drawing. Shop drawings shall be submitted to IBI Group for general conformance before proceeding with fabrication.


IBI Group Professional Services (Canada) Inc.
is a member of the IBI Group of companies

ISSUES


No.	DESCRIPTION	DATE
00	ISSUED FOR CONSTRUCTION	2023-03-13

CONSULTANTS

SEAL



PRIME CONSULTANT



IBI GROUP

175 Galaxy Blvd, Unit 100
Toronto, ON M9W 0C9, Canada
tel 416 679 1930 fax 416 675 4620
ibigroup.com

PROJECT TITLE

CITY OF TORONTO
ACCESSIBILITY UPGRADES

PROJECT ADDRESS

SCARBOROUGH ARTS
COUNCIL
1859 KINGSTON RD.

PROJECT NO:
122260

DRAWN BY:
K.DURUKAN

CHECKED BY:
B.LIAO

PROJECT MGR:
F.BOLOURIAN

APPROVED BY:
S.LIU

SHEET TITLE

DEMOLITION PLAN -
GROUND FLOOR

SHEET NUMBER

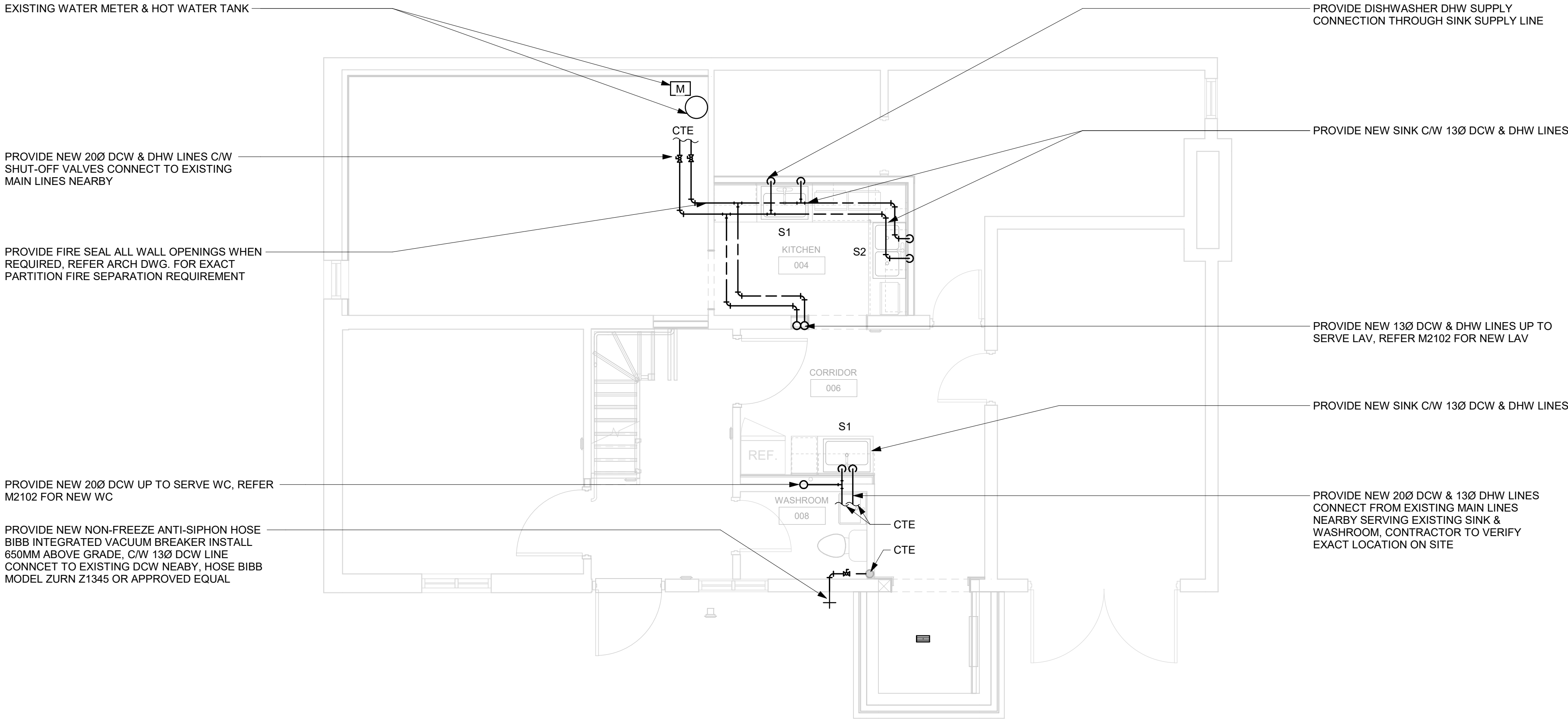
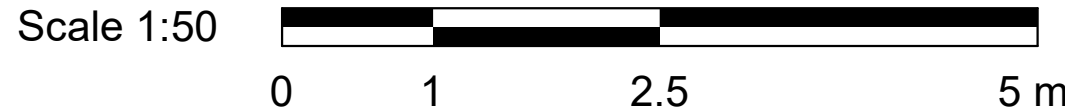
G28-101-M1102

ISSUE

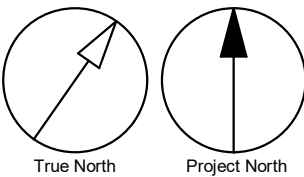
00

BIW 3860/1122260 - CoT TAU Upgrades R2020122260-TAU-28-101-1859KNGSTN-M-F20.rvt 1/1m

2023-03-06 11:44:24 AM



- GENERAL NOTES:
- REFER TO SPECIFICATIONS FOR PLUMBING FIXTURE UNIT TYPES.
 - ALL NEW FIXTURES TO BE FITTED WITH ISOLATION VALVES.



CLIENT

CITY OF TORONTO



Corporate Real Estate Management
Project Management Office
Metro Hall Toronto, ON
MSV 3C6

COPYRIGHT
This drawing has been prepared solely for the intended use, thus any reproduction or distribution for any purpose other than authorized by IBI Group is forbidden. Written dimensions shall have precedence over scaled dimensions. Contractors shall verify and be responsible for all dimensions and conditions on the job, and IBI Group shall be informed of any variations from the dimensions and conditions shown on the drawing. Shop drawings shall be submitted to IBI Group for general conformance before proceeding with fabrication.

IBI Group Professional Services (Canada) Inc.
is a member of the IBI Group of companies

ISSUES		
No.	DESCRIPTION	DATE
00	ISSUED FOR CONSTRUCTION	2023-03-13

CONSULTANTS

SEAL



PRIME CONSULTANT

 **IBI GROUP**
175 Galaxy Blvd, Unit 100
Toronto, ON M9W 0C9, Canada
tel 416 679 1930 fax 416 675 4620
ibigroup.com

PROJECT TITLE
**CITY OF TORONTO
ACCESSIBILITY UPGRADES**

PROJECT ADDRESS
**SCARBOROUGH ARTS
COUNCIL
1859 KINGSTON RD.**

PROJECT NO: 122260	
DRAWN BY: K.DURUKAN	CHECKED BY: B.LIAO
PROJECT MGR: F.BOLOURIAN	APPROVED BY: S.LIU

SHEET TITLE
PLUMBING - BASEMENT

SHEET NUMBER G28-101-M2101	ISSUE 00
--------------------------------------	--------------------

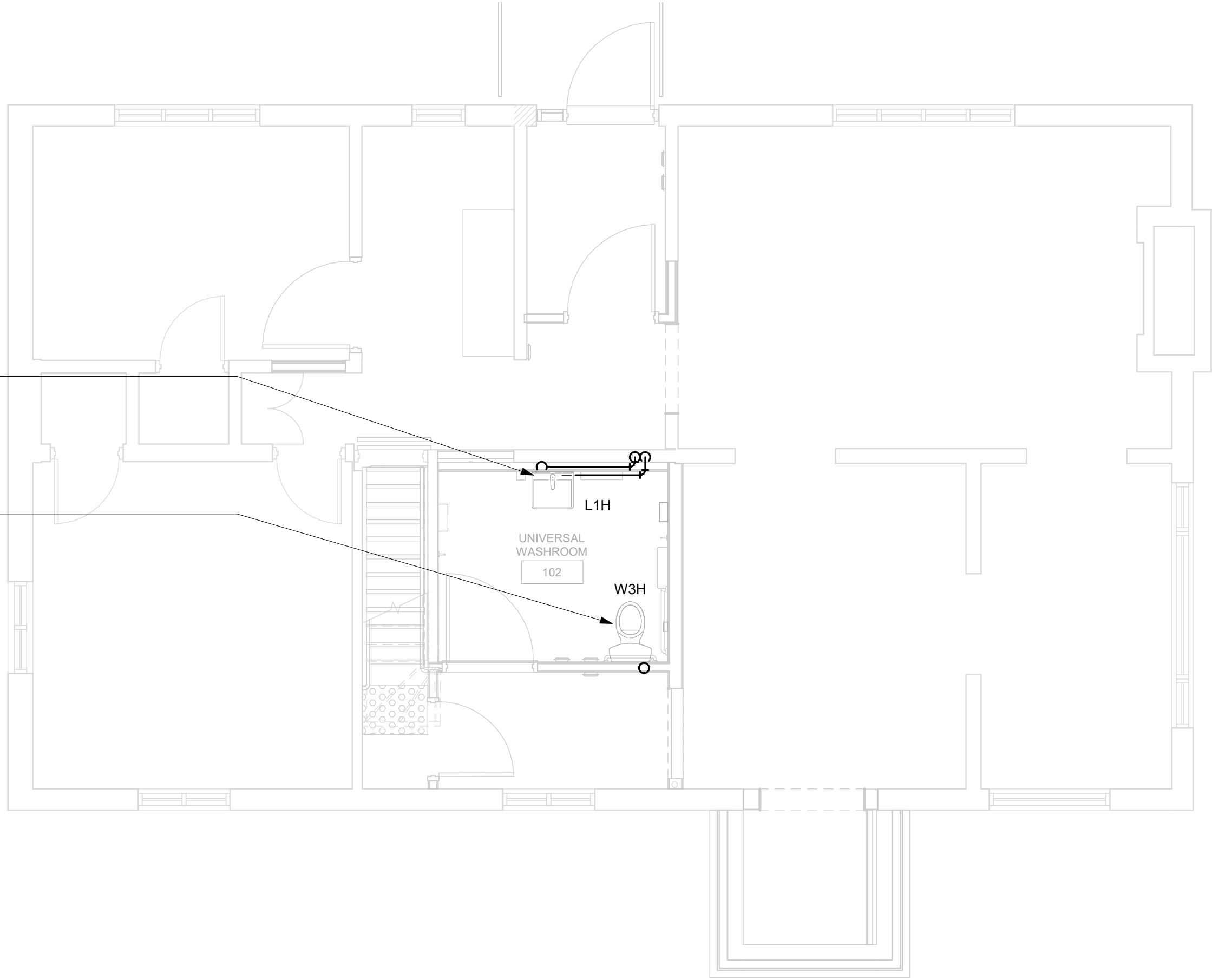
2023-03-06 11:44:25 AM

Scale 1:50

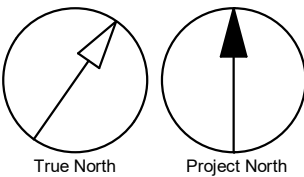


PROVIDE NEW LAV C/W 130 DCW & DHW CONNECT FROM EXISTING PIPES NEARBY, REFER M2101 FOR PROPOSED PIPING LAYOUT

PROVIDE NEW TANK TYPE WC C/W 200 DCW CONNECT FROM EXISTING PIPES NEARBY, REFER M2101 FOR PROPOSED PIPING LAYOUT



- GENERAL NOTES:
- REFER TO SPECIFICATIONS FOR PLUMBING FIXTURE UNIT TYPES.
 - ALL NEW FIXTURES TO BE FITTED WITH ISOLATION VALVES.



CLIENT

CITY OF TORONTO

**Toronto**

Corporate Real Estate Management
Project Management Office
Metro Hall Toronto, ON
MSV 3C6

COPYRIGHT
This drawing has been prepared solely for the intended use. Thus any reproduction or distribution for any purpose other than authorized by IBI Group is forbidden. Written dimensions shall have precedence over scaled dimensions. Contractors shall verify and be responsible for all dimensions and conditions on the job, and IBI Group shall be informed of any variations from the dimensions and conditions shown on the drawing. Shop drawings shall be submitted to IBI Group for general conformance before proceeding with fabrication.

IBI Group Professional Services (Canada) Inc.
is a member of the IBI Group of companies

ISSUES		
No.	DESCRIPTION	DATE
00	ISSUED FOR CONSTRUCTION	2023-03-13

CONSULTANTS

SEAL



PRIME CONSULTANT

**IBI GROUP**
175 Galaxy Blvd, Unit 100
Toronto, ON M9W 0C9, Canada
tel 416 679 1930 fax 416 675 4620
ibigroup.com

PROJECT TITLE

**CITY OF TORONTO
ACCESSIBILITY UPGRADES**

PROJECT ADDRESS

**SCARBOROUGH ARTS
COUNCIL
1859 KINGSTON RD.**

PROJECT NO: 122260	
DRAWN BY: K.DURUKAN	CHECKED BY: B.LIAO
PROJECT MGR: F.BOLOURIAN	APPROVED BY: S.LIU

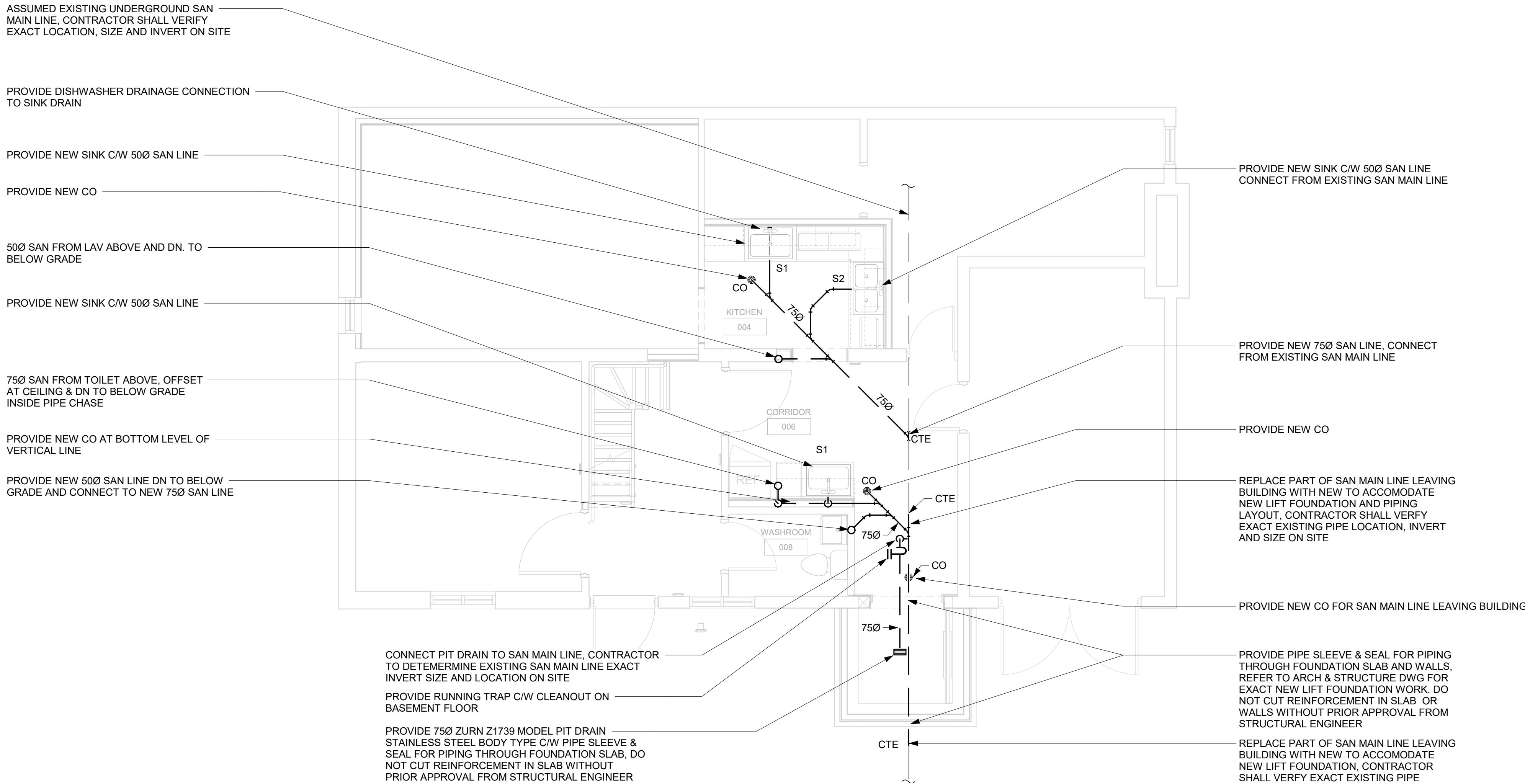
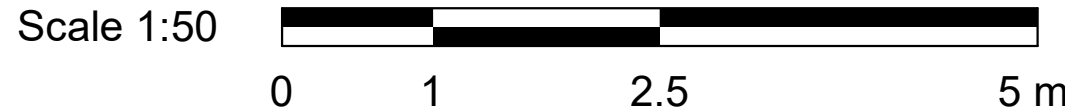
SHEET TITLE

**PLUMBING - GROUND
FLOOR**

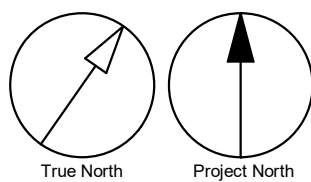
SHEET NUMBER	ISSUE
G28-101-M2102	00

BIW 380/122260 - CoT TAU Upgrades R2020122260-TAU-28-101-1859KINGSTN-AM-F20.rvt 1/1m 1/1m

2023-03-06 11:44:25 AM



- GENERAL NOTES:
- REFER TO SPECIFICATIONS FOR PLUMBING FIXTURE UNIT TYPES.
 - PROVIDE SANITARY VENT FOR EACH NEW PLUMBING FIXTURE AND CONNECT TO EXISTING SANITARY VENT MAIN.
 - PROVIDE P-TRAP FOR EACH PLUMBING FIXTURE AS PER OSC.
 - ALL NEW FLOOR DRAINS SHALL BE C/W P-TRAP AND PRIMER.
 - PROVIDE FIRE STOP FOR ALL PIPE PENETRATIONS THROUGH FIRE SEPERATIONS.
 - ALL UNDERGROUND SANITARY PIPING SHALL BE MINIMUM 75mmØ UNLESS OTHERWISE NOTED.



CLIENT

CITY OF TORONTO

Corporate Real Estate Management
Project Management Office
Metro Hall Toronto, ON
MSV 3C6

COPYRIGHT
This drawing has been prepared solely for the intended use, thus any reproduction or distribution for any purpose other than authorized by IBI Group is forbidden. Written dimensions shall have precedence over scaled dimensions. Contractors shall verify and be responsible for all dimensions and conditions on the job, and IBI Group shall be informed of any variations from the dimensions and conditions shown on the drawing. Shop drawings shall be submitted to IBI Group for general conformance before proceeding with fabrication.

IBI Group Professional Services (Canada) Inc.
is a member of the IBI Group of companies

ISSUES		
No.	DESCRIPTION	DATE
00	ISSUED FOR CONSTRUCTION	2023-03-13

CONSULTANTS

SEAL



PRIME CONSULTANT

IBI **GROUP**
175 Galaxy Blvd, Unit 100
Toronto, ON M9W 0C9, Canada
tel 416 679 1930 fax 416 675 4620
ibigroup.com

PROJECT TITLE
**CITY OF TORONTO
ACCESSIBILITY UPGRADES**

PROJECT ADDRESS
**SCARBOROUGH ARTS
COUNCIL
1859 KINGSTON RD.**

PROJECT NO:
122260

DRAWN BY:
K.DURUKAN

CHECKED BY:
B.LIAO

PROJECT MGR:
F.BOLOURIAN

APPROVED BY:
S.LIU

SHEET TITLE
DRAINAGE - BASEMENT

SHEET NUMBER

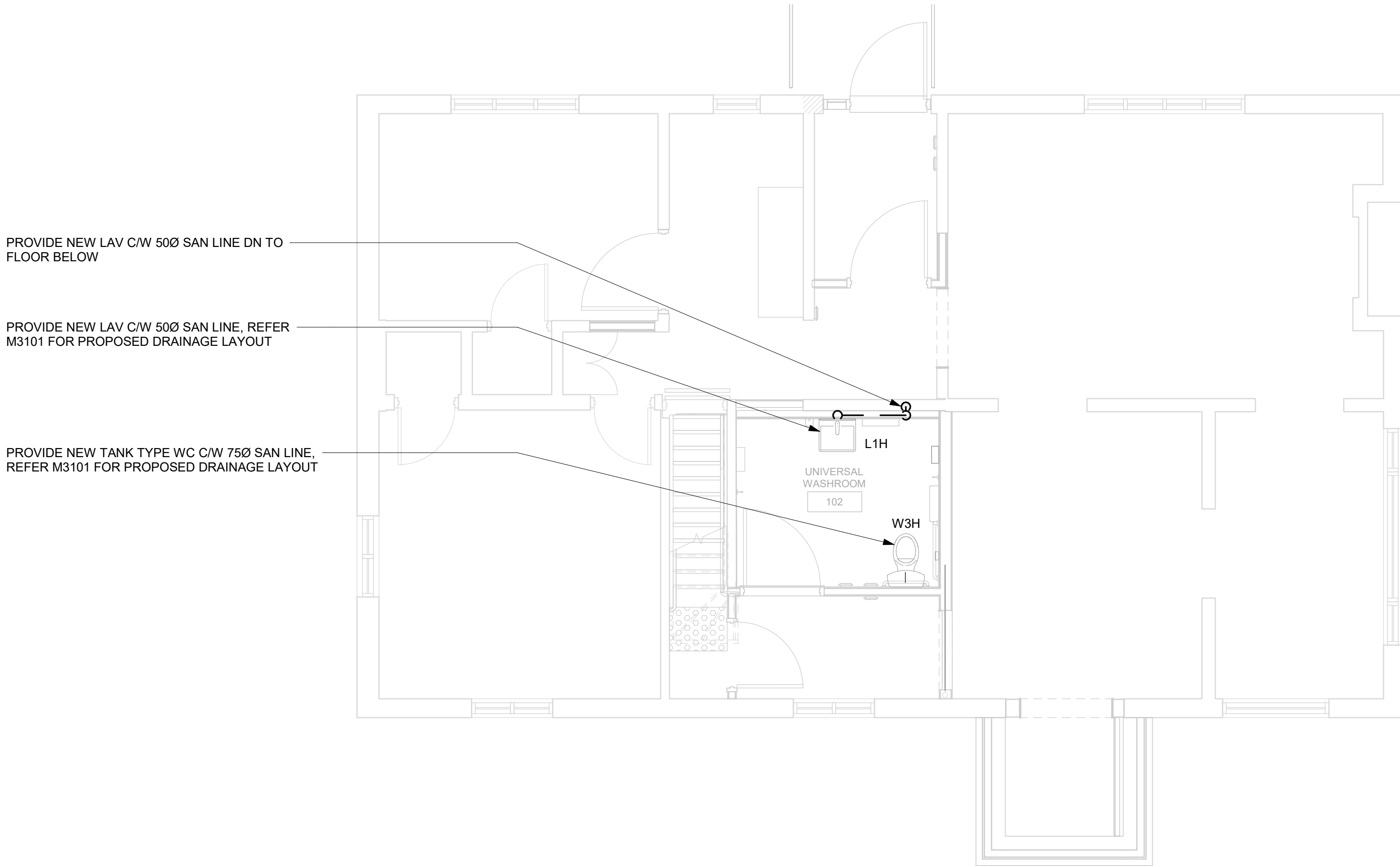
G28-101-M3101

ISSUE

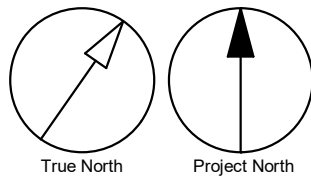
00

2023-03-06 11:44:26 AM

Scale 1:50



- GENERAL NOTES:
- REFER TO SPECIFICATIONS FOR PLUMBING FIXTURE UNIT TYPES.
 - PROVIDE SANITARY VENT FOR EACH NEW PLUMBING FIXTURE AND CONNECT TO EXISTING SANITARY VENT MAIN.
 - PROVIDE P-TRAP FOR EACH PLUMBING FIXTURE AS PER OSC.
 - ALL NEW FLOOR DRAINS SHALL BE C/W P-TRAP AND PRIMER.
 - PROVIDE FIRE STOP FOR ALL PIPE PENETRATIONS THROUGH FIRE SEPERATIONS.
 - ALL UNDERGROUND SANITARY PIPING SHALL BE MINIMUM 75mmØ UNLESS OTHERWISE NOTED.



CLIENT

CITY OF TORONTO

Corporate Real Estate Management
Project Management Office
Metro Hall Toronto, ON
MSV 3C6

COPYRIGHT
This drawing has been prepared solely for the intended use, thus any reproduction or distribution for any purpose other than authorized by IBI Group is forbidden. Written dimensions shall have precedence over scaled dimensions. Contractors shall verify and be responsible for all dimensions and conditions on the job, and IBI Group shall be informed of any variations from the dimensions and conditions shown on the drawing. Shop drawings shall be submitted to IBI Group for general conformance before proceeding with fabrication.

IBI Group Professional Services (Canada) Inc.
is a member of the IBI Group of companies

ISSUES		
No.	DESCRIPTION	DATE
00	ISSUED FOR CONSTRUCTION	2023-03-13

CONSULTANTS

SEAL



PRIME CONSULTANT

IBI **GROUP**
175 Galaxy Blvd, Unit 100
Toronto, ON M9W 0C9, Canada
tel 416 679 1930 fax 416 675 4620
ibigroup.com

PROJECT TITLE
**CITY OF TORONTO
ACCESSIBILITY UPGRADES**

PROJECT ADDRESS
**SCARBOROUGH ARTS
COUNCIL
1859 KINGSTON RD.**

PROJECT NO:
122260

DRAWN BY:
K.DURUKAN

CHECKED BY:
B.LIAO

PROJECT MGR:
F.BOLOURIAN

APPROVED BY:
S.LIU

SHEET TITLE
**DRAINAGE - GROUND
FLOOR**

SHEET NUMBER

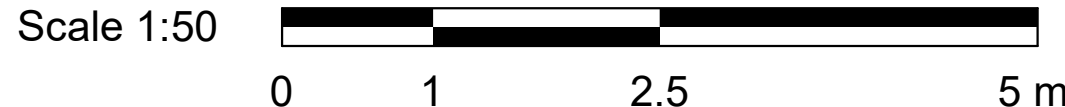
G28-101-M3102

ISSUE

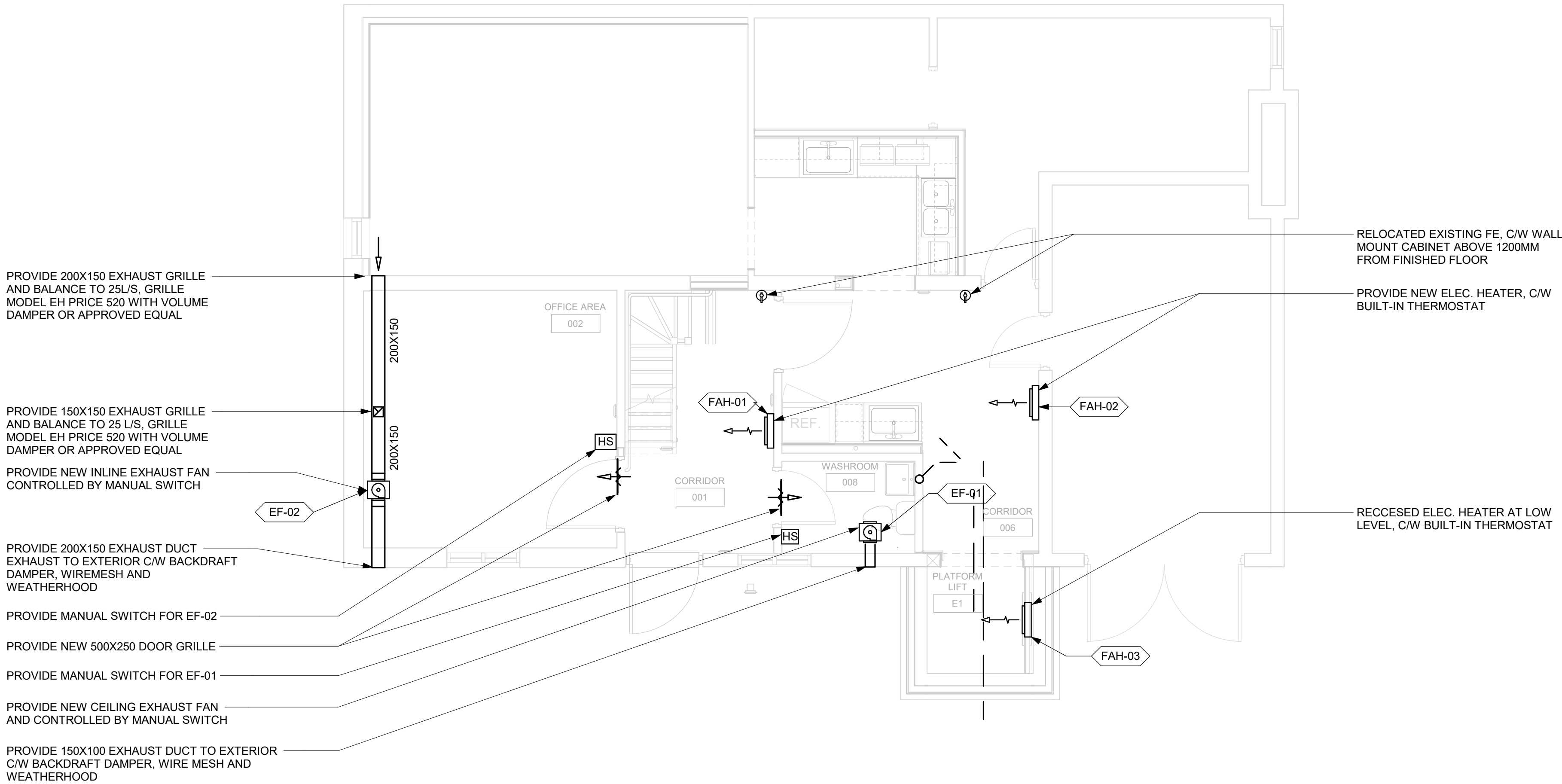
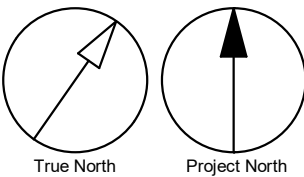
00

BIM 360://122260 - CoT TAU Upgrades R2020122260-TAU-28-101-1859KNGSTN-M-F20.rvt | 10mm | 1 m | SCALE CHECK

2023-03-06 11:44:27 AM



- GENERAL NOTES:
1. ADD AND ADJUST DUCTS TO FIT NEW DIFFUSERS/GRILLES.
 2. THERMOSTATS TO BE MOUNTED AT 1200mm A.F.F.



CLIENT

CITY OF TORONTO

Corporate Real Estate Management
Project Management Office
Metro Hall Toronto, ON
MSV 3C6

COPYRIGHT
This drawing has been prepared solely for the intended use, thus any reproduction or distribution for any purpose other than authorized by IBI Group is forbidden. Written dimensions shall have precedence over scaled dimensions. Contractors shall verify and be responsible for all dimensions and conditions on the job, and IBI Group shall be informed of any variations from the dimensions and conditions shown on the drawing. Shop drawings shall be submitted to IBI Group for general conformance before proceeding with fabrication.

IBI Group Professional Services (Canada) Inc.
is a member of the IBI Group of companies

ISSUES		
No.	DESCRIPTION	DATE
00	ISSUED FOR CONSTRUCTION	2023-03-13

CONSULTANTS

SEAL



PRIME CONSULTANT

IBI GROUP
175 Galaxy Blvd, Unit 100
Toronto, ON M9W 0C9, Canada
tel 416 679 1930 fax 416 675 4620
ibigroup.com

PROJECT TITLE

**CITY OF TORONTO
ACCESSIBILITY UPGRADES**

PROJECT ADDRESS

**SCARBOROUGH ARTS
COUNCIL
1859 KINGSTON RD.**

PROJECT NO: 122260	
DRAWN BY: K.DURUKAN	CHECKED BY: B.LIAO
PROJECT MGR: F.BOLOURIAN	APPROVED BY: S.LIU

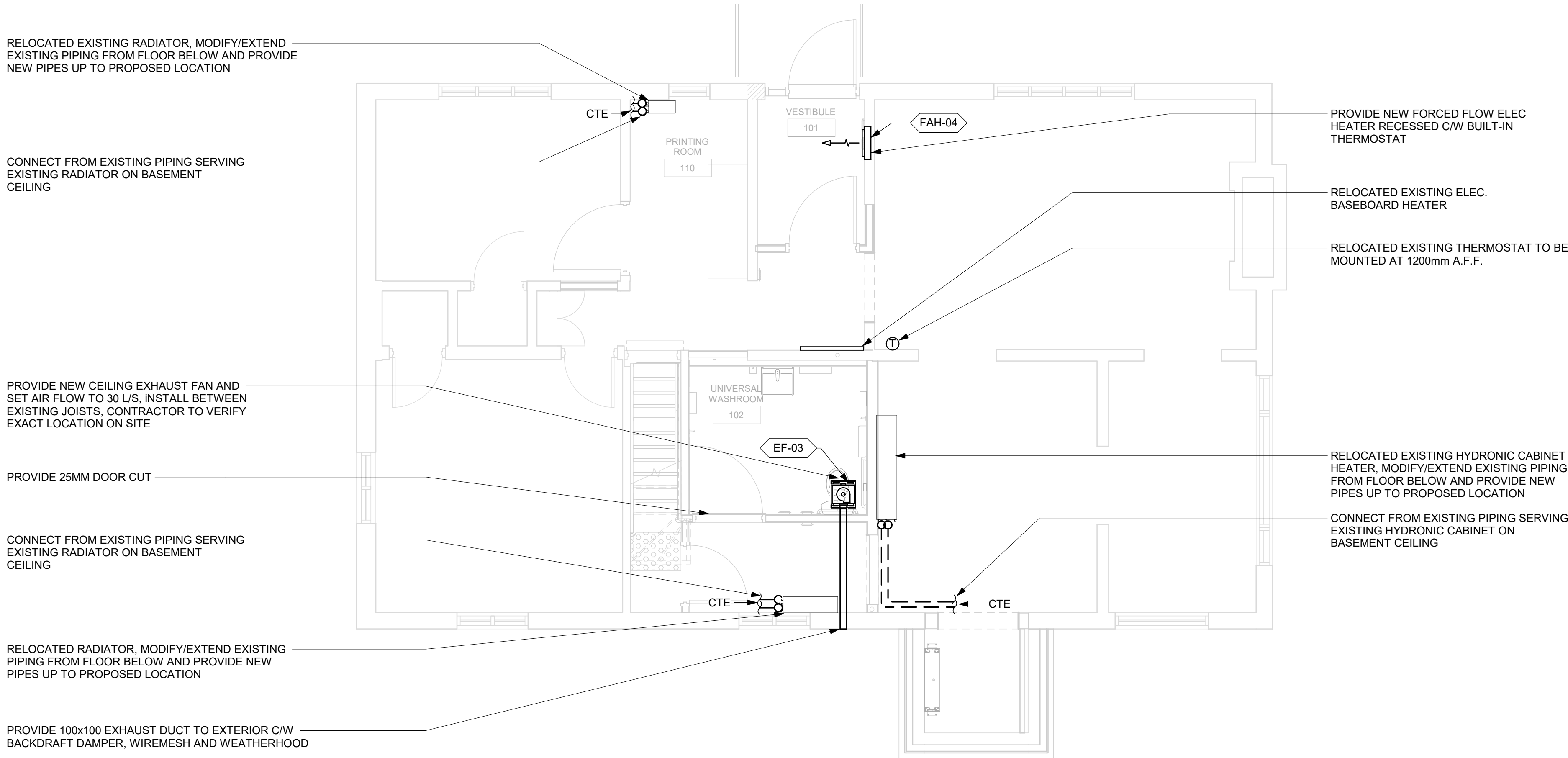
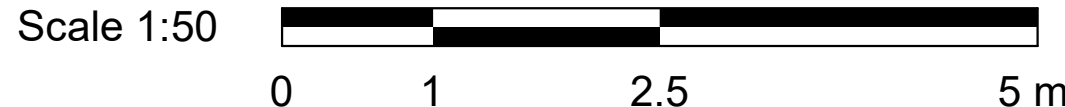
SHEET TITLE

HVAC - BASEMENT

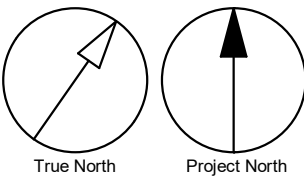
SHEET NUMBER	ISSUE
G28-101-M5101	00

BIH 380/1122260 - CoT TAU Upgrades R2020122260-TAU-28-101-1859KNGSTN-M-F20.rvt 1/10m 1/1m

2023-03-06 11:44:27 AM




- GENERAL NOTES:
1. ADD AND ADJUST DUCTS TO FIT NEW DIFFUSERS/GRILLES.
 2. THERMOSTATS TO BE MOUNTED AT 1200mm A.F.F.



CLIENT

CITY OF TORONTO



Corporate Real Estate Management
Project Management Office
Metro Hall Toronto, ON
MSV 3C6

COPYRIGHT

This drawing has been prepared solely for the intended use, thus any reproduction or distribution for any purpose other than authorized by IBI Group is forbidden. Written dimensions shall have precedence over scaled dimensions. Contractors shall verify and be responsible for all dimensions and conditions on the job, and IBI Group shall be informed of any variations from the dimensions and conditions shown on the drawing. Shop drawings shall be submitted to IBI Group for general conformance before proceeding with fabrication.


IBI Group Professional Services (Canada) Inc.
is a member of the IBI Group of companies

ISSUES

No.	DESCRIPTION	DATE
00	ISSUED FOR CONSTRUCTION	2023-03-13

CONSULTANTS

SEAL



PRIME CONSULTANT



IBI GROUP

175 Galaxy Blvd, Unit 100
Toronto, ON M9W 0C9, Canada
tel 416 679 1930 fax 416 675 4620
ibigroup.com

PROJECT TITLE

CITY OF TORONTO

ACCESSIBILITY UPGRADES

PROJECT ADDRESS

SCARBOROUGH ARTS COUNCIL

1859 KINGSTON RD.

PROJECT NO:

122260

DRAWN BY:

K.DURUKAN

CHECKED BY:

B.LIAO

PROJECT MGR:

F.BOLOURIAN

APPROVED BY:

S.LIU

SHEET TITLE

HVAC - GROUND FLOOR

SHEET NUMBER

G28-101-M5102

ISSUE

00

BIM 360//122260 - CoT TAU Upgrades R2020122260-TAU-28-101-1859KINGSTN-AM-R20.rvt 10mm 1 m