

ELECTRICAL DRAWING LIST	
Sheet Number	Sheet Name
E0000	DRAWING LIST
E1101	ELECTRICAL DEMOLITION PLAN 1ST FLOOR
E2101	POWER & SYSTEMS PLAN 1ST FLOOR
E2102	POWER & SYSTEMS PLAN 2ND FLOOR
E3100	PANEL SCHEDULES

CLIENT

CITY OF TORONTO

**Toronto**

Corporate Real Estate Management
Project Management Office
Metro Hall Toronto, ON
M5V 3C6

COPYRIGHT
This drawing has been prepared solely for the intended use. Thus any reproduction or distribution for any purpose other than authorized by IBI Group is forbidden. Written dimensions shall have precedence over scaled dimensions. Contractors shall verify and be responsible for all dimensions and conditions on the job, and IBI Group shall be informed of any variations from the dimensions and conditions shown on the drawing. Shop drawings shall be submitted to IBI Group for general conformance before proceeding with fabrication.

IBI Group Professional Services (Canada) Inc.
is a member of the IBI Group of companies

ISSUES		
No.	DESCRIPTION	DATE
0	ISSUED FOR CONSTRUCTION	2023-03-13

CONSULTANTS

SEAL



PRIME CONSULTANT

**IBI GROUP**
175 Galaxy Blvd, Unit 100
Toronto, ON M9W 0C9, Canada
tel 416 679 1930 fax 416 675 4620
ibigroup.com

PROJECT TITLE
CITY OF TORONTO
ACCESSIBILITY UPGRADES

PROJECT ADDRESS

FIRE HALL NO.224
1313 WOODBINE AVE.

PROJECT NO: 122260	
DRAWN BY: V. MAC	CHECKED BY: M. BOJIC
PROJECT MGR: F. BOLOURIAN	APPROVED BY: P. WILLIAMS

SHEET TITLE
DRAWING LIST

SHEET NUMBER	ISSUE
G28-41-E0000	0

- NOTES:
1. REMOVE CONDUITS CONNECTED TO DATA AND POWER OUTLETS.
 2. PULL BACK WIRING TO NEAREST JUNCTION BOX. MAKE SAFE, AND PREPARE FOR RE-USE (TYPICAL FOR RECEPTACLES, SECURITY DEVICES, LIGHT SWITCHES, OCCUPANCY SENSORS, AND LIGHTS, AS SHOWN ON ELECTRICAL DEMOLITION PLAN). PULL BACK DATA OUTLET WIRING TO SOURCE AND PRESERVE WIRING FOR RE-USE.
 3. COORDINATE WITH CORPORATE SECURITY BEFORE DISCONNECTING AND RELOCATING SECURITY DEVICES.

CLIENT

CITY OF TORONTO


Corporate Real Estate Management
Project Management Office
Metro Hall Toronto, ON
M5V 3C6

COPYRIGHT
This drawing has been prepared solely for the intended use, thus any reproduction or distribution for any purpose other than authorized by IBI Group is forbidden. Written dimensions shall have precedence over scaled dimensions. Contractors shall verify and be responsible for all dimensions and conditions on the job, and IBI Group shall be informed of any variations from the dimensions and conditions shown on the drawing. Shop drawings shall be submitted to IBI Group for general conformance before proceeding with fabrication.

IBI Group Professional Services (Canada) Inc.
is a member of the IBI Group of companies

ISSUES		
No.	DESCRIPTION	DATE
0	ISSUED FOR CONSTRUCTION	2023-03-13

CONSULTANTS

SEAL



PRIME CONSULTANT

 **IBI GROUP**
175 Galaxy Blvd, Unit 100
Toronto, ON M9W 0C9, Canada
tel 416 679 1930 fax 416 675 4620
ibigroup.com

PROJECT TITLE
**CITY OF TORONTO
ACCESSIBILITY UPGRADES**

PROJECT ADDRESS

**FIRE HALL NO.224
1313 WOODBINE AVE.**

PROJECT NO:
122260

DRAWN BY:
V. MAC

CHECKED BY:
M. BOJIC

PROJECT MGR:
F. BOLOURIAN

APPROVED BY:
P. WILLIAMS

SHEET TITLE

**ELECTRICAL
DEMOLITION PLAN 1ST
FLOOR**

SHEET NUMBER

G28-41-E1101

ISSUE

0

REMOVE EMERGENCY PUBLIC TELEPHONE, AND
COIL WIRING BACK TO SOURCE.
PRESERVE WIRING FOR RE-USE.

T

REMOVE CEILING-MOUNTED CONDUIT. PULL WIRING
BACK TO NEAREST JUNCTION BOX EXISTING TO
REMAIN, AND PRESERVE FOR RE-USE.

JUNCTION BOX EXISTING TO REMAIN

CONDUIT AND WIRING EXISTING TO REMAIN.

REMOVE JUNCTION BOXES AND CORRESPONDING
CONDUITS. PULL WIRING BACK TO NEAREST
JUNCTION BOX EXISTING TO REMAIN, AND PRESERVE
FOR RE-USE. JUNCTION BOXES TO BE RELOCATED.

REMOVE EMERGENCY LIGHT REMOTE HEAD.
PRESERVE WIRING FOR RE-USE.

EXISTING CONDUIT ROUTE TO REMAIN.

REMOVE DOORBELL, AND PRESERVE
WIRING FOR RE-USE.

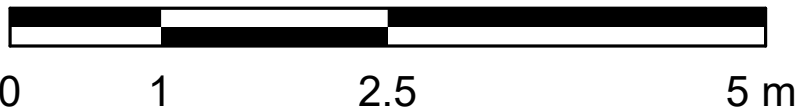
DB

1 POWER AND SYSTEMS DEMOLITION PLAN FIRST FLOOR
E1101 Scale: 1 : 50

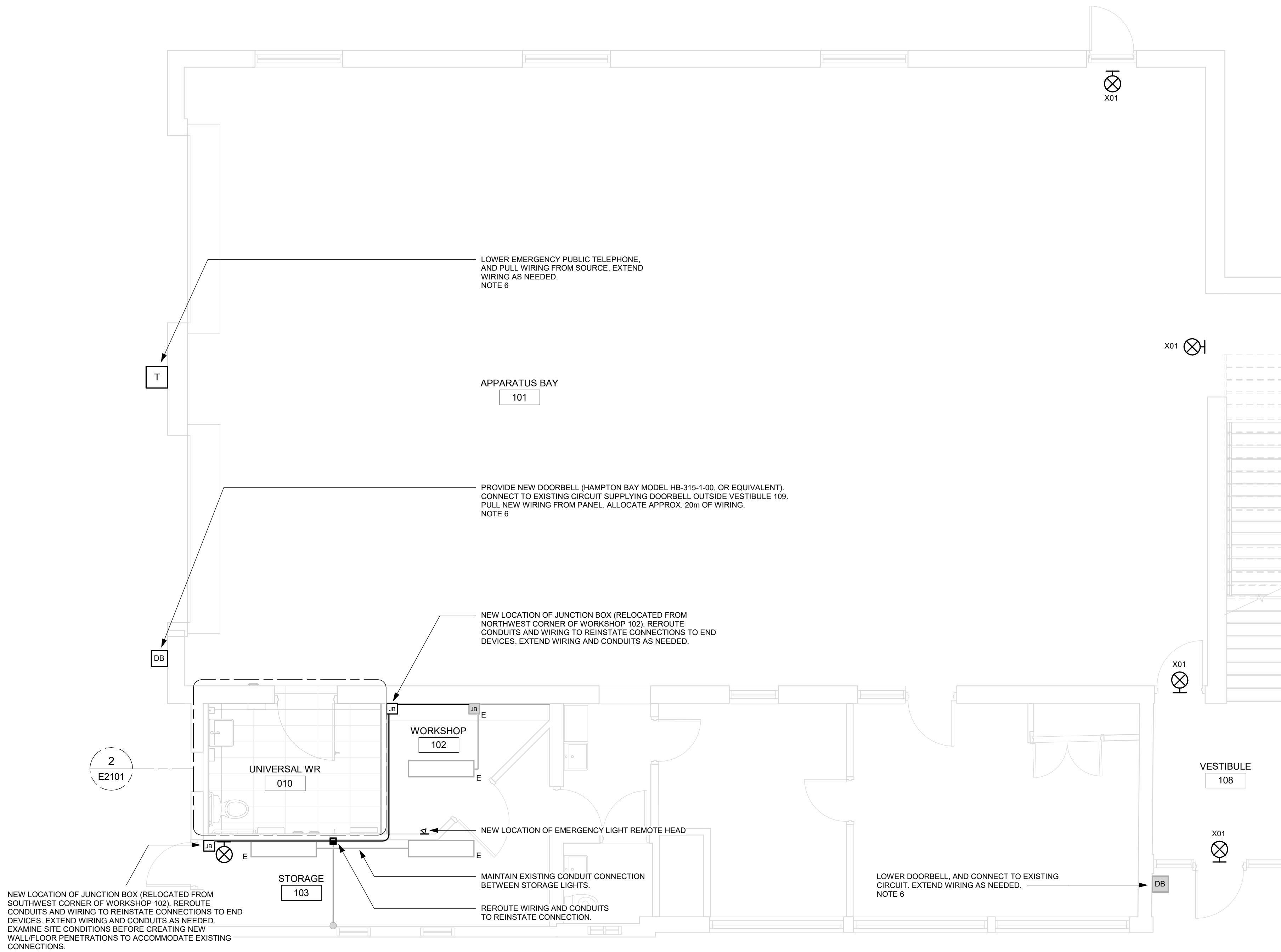


2023-03-20 9:59:15 AM

Scale 1:50

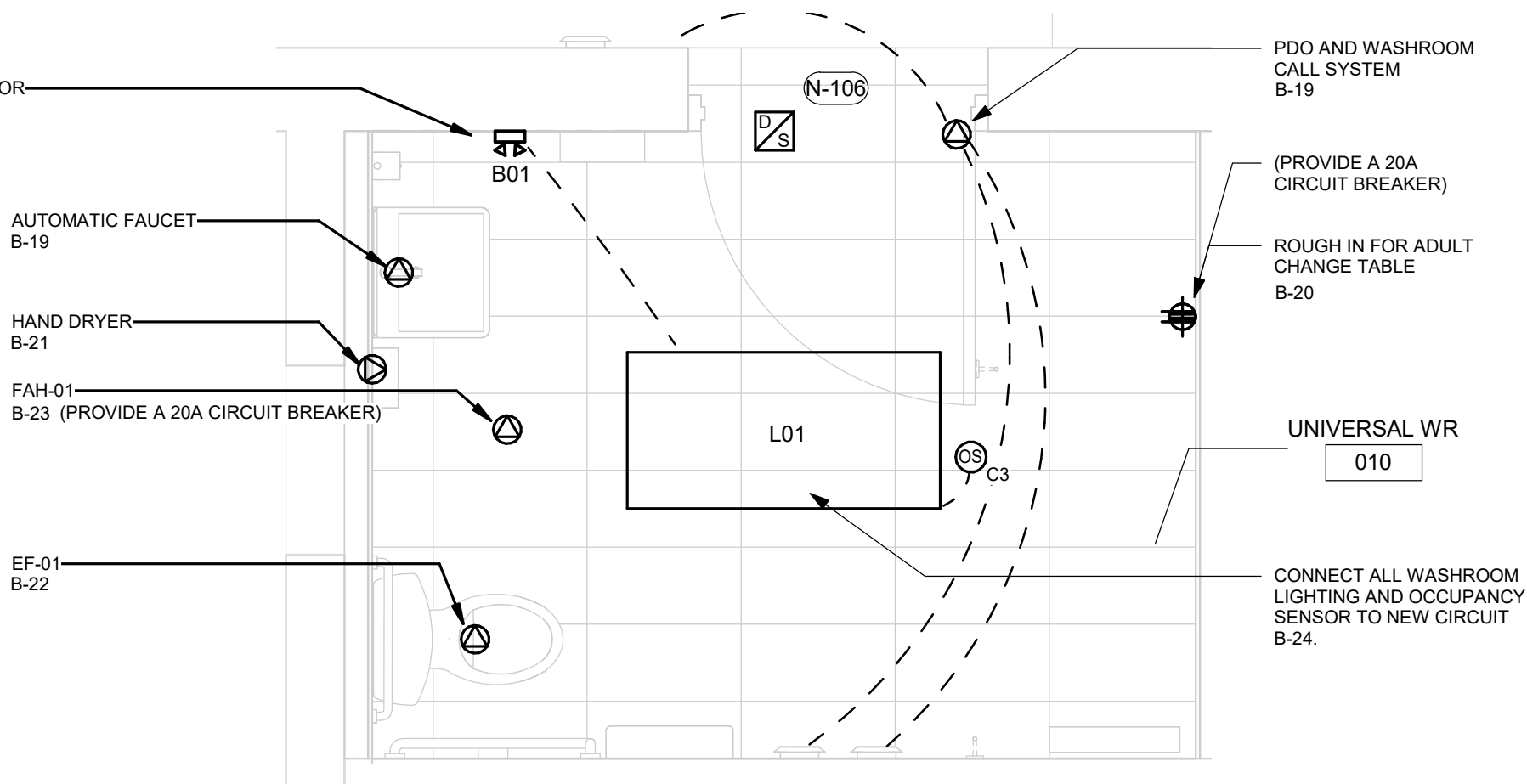


1 POWER AND SYSTEMS PLAN FIRST FLOOR
E2101 Scale: 1 : 50



NOTES:

- CIRCUIT NUMBERS SHOWN FOR GROUPING PURPOSES ONLY. ALLOCATE CIRCUITS TO EXISTING PANELS AS SPACE ALLOWS. ADD NEW CIRCUIT BREAKERS AS REQUIRED. ASSUME 15A, 120V CIRCUIT BREAKER UNLESS OTHERWISE NOTED. UPDATE PANEL SCHEDULE WITH NEW LOADS. SUBMIT NEW PANEL SCHEDULE AS SHOP DRAWING.
- CONNECT NEW LUMINAIRES TO EXISTING LOCAL LIGHTING CIRCUIT.
- RECONNECT ALL NEW DOOR HARDWARE TO EXISTING WIRING. EXTEND WIRING AND CONDUITS AS NEEDED.
- CONNECT NEW POWER RECEPTACLES TO EXISTING LOCAL RECEPTACLE CIRCUIT. UNLESS OTHERWISE NOTED, EXTEND WIRING AND CONDUITS AS NEEDED. CONNECT DATA OUTLETS TO EXISTING SOURCE. UNLESS OTHERWISE NOTED, PULL NEW WIRING FROM SOURCE. MOUNT POWER AND DATA OUTLETS ACCORDING TO MOUNTING HEIGHTS SCHEDULE ON SHEET GAL-G4003.
- REMOVE AND REPLACE ALL EXIT SIGNS WITH LUMINAIRE TYPE X01 AS SPECIFIED IN LUMINAIRE SCHEDULE. CONNECT TO EXISTING CIRCUITS.
- MOUNT PUBLIC EMERGENCY TELEPHONE, AND DOORBELLS AT 1050mm AFF FROM CENTER OF DEVICE. CONNECT TO EXISTING CIRCUITS. EXTEND WIRING AND CONDUITS AS NEEDED. REFER TO ARCHITECTURAL SHEET A3011 DETAILS 1 AND 2 RESPECTIVELY FOR ELEVATIONS.
- CONDUIT ROUTING SHOWN ON FLOOR LAYOUT IS SCHEMATIC. VERIFY CONDITIONS ON SITE.
- CONNECT RELOCATED EXISTING MECHANICAL EQUIPMENT TO EXISTING CIRCUITS. EXTEND WIRING AND CONDUITS AS NEEDED.
- PENETRATION LOCATIONS ARE APPROXIMATE. VERIFY CONDITIONS ON SITE, AND CONFIRM WITH CLIENT BEFORE PROCEEDING.



2 POWER AND SYSTEMS PLAN FIRST FLOOR - BARRIER-FREE WASHROOM
E2101 Scale: 1 : 25

CLIENT

CITY OF TORONTO
Corporate Real Estate Management
Project Management Office
Metro Hall Toronto, ON
M5V 3C6

COPYRIGHT

This drawing has been prepared solely for the intended use, thus any reproduction or distribution for any purpose other than authorized by IBI Group is forbidden. Written dimensions shall have precedence over scaled dimensions. Contractors shall verify and be responsible for all dimensions and conditions on the job, and IBI Group shall be informed of any variations from the dimensions and conditions shown on the drawing. Shop drawings shall be submitted to IBI Group for general conformance before proceeding with fabrication.

IBI Group Professional Services (Canada) Inc.
is a member of the IBI Group of companies

ISSUES

No.	DESCRIPTION	DATE
0	ISSUED FOR CONSTRUCTION	2023-03-13

CONSULTANTS

SEAL



PRIME CONSULTANT

IBI GROUP
175 Galaxy Blvd, Unit 100
Toronto, ON M9W 0C9, Canada
tel 416 679 1930 fax 416 675 4620
ibigroup.com

PROJECT TITLE

CITY OF TORONTO
ACCESSIBILITY UPGRADES

PROJECT ADDRESS

FIRE HALL NO.224
1313 WOODBINE AVE.

PROJECT NO:

122260

DRAWN BY:

V. MAC

CHECKED BY:

M. BOJIC

PROJECT MGR:

F. BOLOURIAN

APPROVED BY:

P. WILLIAMS

SHEET TITLE

POWER & SYSTEMS
PLAN 1ST FLOOR

SHEET NUMBER

G28-41-E2101

ISSUE

0

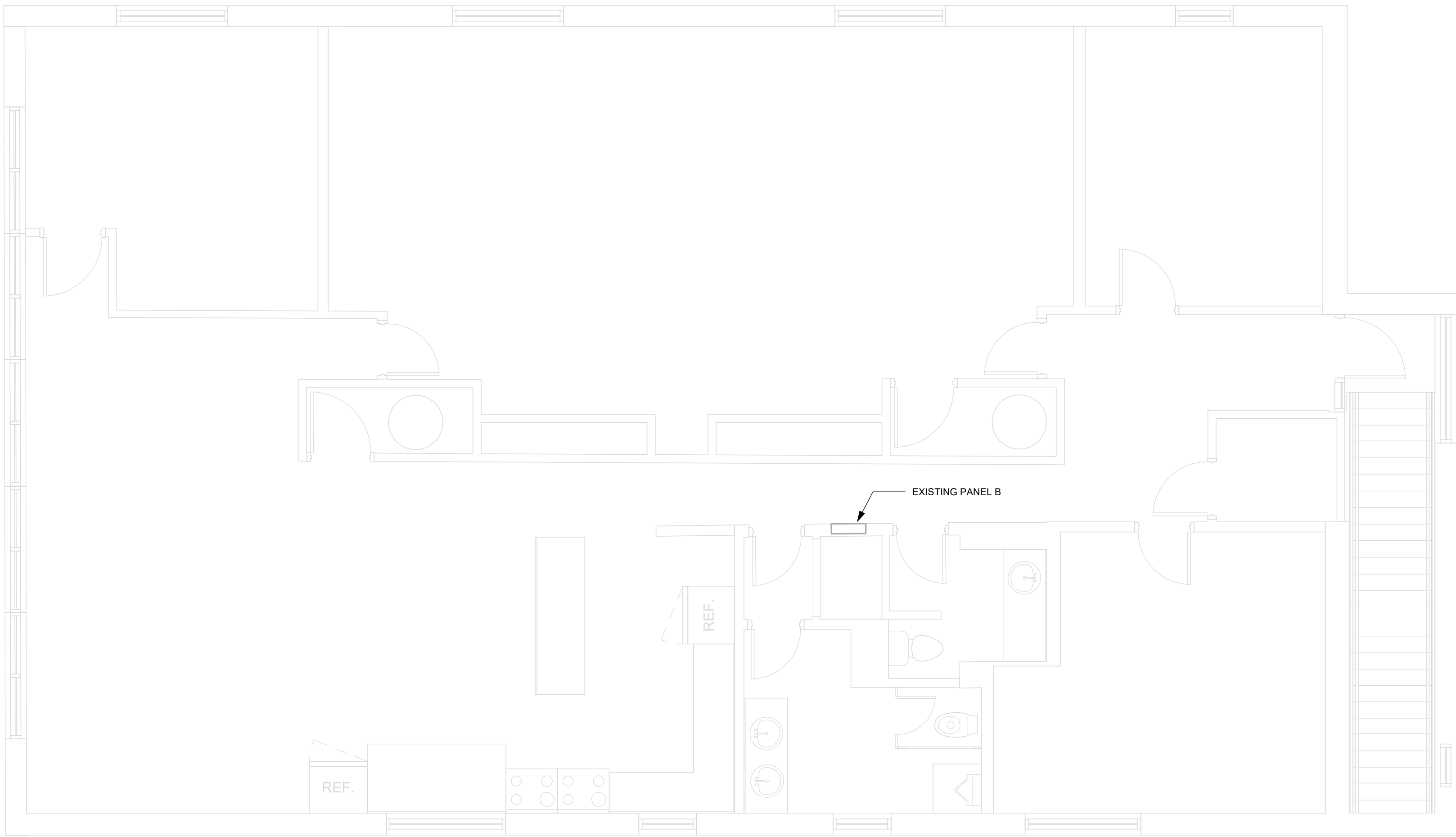
BIM 380/112260 - CoT TAU Upgrades R2020122260-TAU-28-41-1313WDBN-E-R20.rvt

10mm

SCALE CHECK
1 m

2023-03-20 9:59:19 AM

Scale 1:50



1 POWER & SYSTEMS 2ND FLOOR
E2102 / Scale: 1 : 50

CLIENT

CITY OF TORONTO

**Toronto**

Corporate Real Estate Management
Project Management Office
Metro Hall Toronto, ON
M5V 3C6

COPYRIGHT
This drawing has been prepared solely for the intended use, thus any reproduction or distribution for any purpose other than authorized by IBI Group is forbidden. Written dimensions shall have precedence over scaled dimensions. Contractors shall verify and be responsible for all dimensions and conditions on the job, and IBI Group shall be informed of any variations from the dimensions and conditions shown on the drawing. Shop drawings shall be submitted to IBI Group for general conformance before proceeding with fabrication.

IBI Group Professional Services (Canada) Inc.
is a member of the IBI Group of companies

ISSUES		
No.	DESCRIPTION	DATE
0	ISSUED FOR CONSTRUCTION	2023-03-13

CONSULTANTS

SEAL



PRIME CONSULTANT

**IBI GROUP**
175 Galaxy Blvd, Unit 100
Toronto, ON M9W 0C9, Canada
tel 416 679 1930 fax 416 675 4620
ibigroup.com

PROJECT TITLE
CITY OF TORONTO
ACCESSIBILITY UPGRADES

PROJECT ADDRESS

FIRE HALL NO.224
1313 WOODBINE AVE.

PROJECT NO: 122260	
DRAWN BY: V. MAC	CHECKED BY: M. BOJIC
PROJECT MGR: F. BOLOURIAN	APPROVED BY: P. WILLIAMS

SHEET TITLE
POWER & SYSTEMS
PLAN 2ND FLOOR

SHEET NUMBER G28-41-E2102	ISSUE 0
-------------------------------------	-------------------

BIW 380//122260 - CoT TAU Upgrades R2020122260-TAU-28-41-1313WDBN-E-R20.rvt 10mm 1 m

Branch Panel:

Location: KITCHEN ROOM 206

Supply From:

Mounting: Recessed

Enclosure: Type 1

Volts: 120/208V Y

Phases: 3

Wires: 4

A.I.C. Rating:

Mains Type:

Mains Rating: 100

MCB Rating: 1

Notes:

CCT	Circuit Description	Trip	Poles	A	B	C	Poles	Trip	Circuit Description	CCT	
B-1	SPACE	--	--	0	0			--	SPACE	B-2	
B-3	SPACE	--	--		0	0		--	SPACE	B-4	
B-5	SPACE	--	--			0		--	SPACE	B-6	
B-7	SPACE	--	--	0	0			--	SPACE	B-8	
B-9	SPACE	--	--		0	0		--	SPACE	B-10	
B-11	SPACE	--	--			0	0	--	SPACE	B-12	
B-13	SPACE	--	--	0	0			--	SPACE	B-14	
B-15	SPACE	--	--		0	0		--	SPACE	B-16	
B-17	SPACE	--	--			0	0	--	SPACE	B-18	
B-19	AUTOMATIC FAUCET	20	1	0	180			1	20	GFCI	B-20
B-21	HAND DRYER	20	1			0	20	1	20	EF-01	B-22
B-23	FAH-01	20	1			0	76	1	20	LITES	B-24
		Total Load:		180 VA		20 VA		76 VA			
		Total Amps:		1.57		0.17		0.7			

Legend:

Load Classification	Connected Load	Demand Factor	Estimated Demand	Panel Totals
Power	20 VA	100.00%	20 VA	
LITES	76 VA	125.00%	95 VA	Total Conn. Load: 268 VA
GFCI RCT	180 VA	100.00%	180 VA	Total Est. Demand: 286 VA
				Total Conn. Current: 0.74
				Total Est. Demand Current: 0.79

Notes:

CLIENT

CITY OF TORONTO



Corporate Real Estate Management
Project Management Office
Metro Hall Toronto, ON
M5V 3C6

COPYRIGHT

The drawing has been prepared solely for the intended use, thus any reproduction or distribution for any purpose other than authorized by IBI Group is forbidden. Written dimensions shall have precedence over scaled dimensions. Contractors shall verify and be responsible for all dimensions and conditions on the job, and IBI Group shall be informed of any variations from the dimensions and conditions shown on the drawing. Shop drawings shall be submitted to IBI Group for general conformance before proceeding with fabrication.

IBI Group Professional Services (Canada) Inc.
is a member of the IBI Group of companies

ISSUES

No.	DESCRIPTION	DATE
0	ISSUED FOR CONSTRUCTION	2023-03-13

CONSULTANTS

SEAL



PRIME CONSULTANT



IBI GROUP
175 Galaxy Blvd, Unit 100
Toronto, ON M9W 0C9, Canada
tel 416 679 1930 fax 416 675 4620
ibigroup.com

PROJECT TITLE

CITY OF TORONTO
ACCESSIBILITY UPGRADES

PROJECT ADDRESS

FIRE HALL NO.224
1313 WOODBINE AVE.

PROJECT NO:
122260

DRAWN BY:
V. MAC

CHECKED BY:
M. BOJIC

PROJECT MGR:
F. BOLOURIAN

APPROVED BY:
P. WILLIAMS

SHEET TITLE

PANEL SCHEDULES

SHEET NUMBER

G28-41-E3100

ISSUE

0

