

2022-10-25 2:16:38 PM



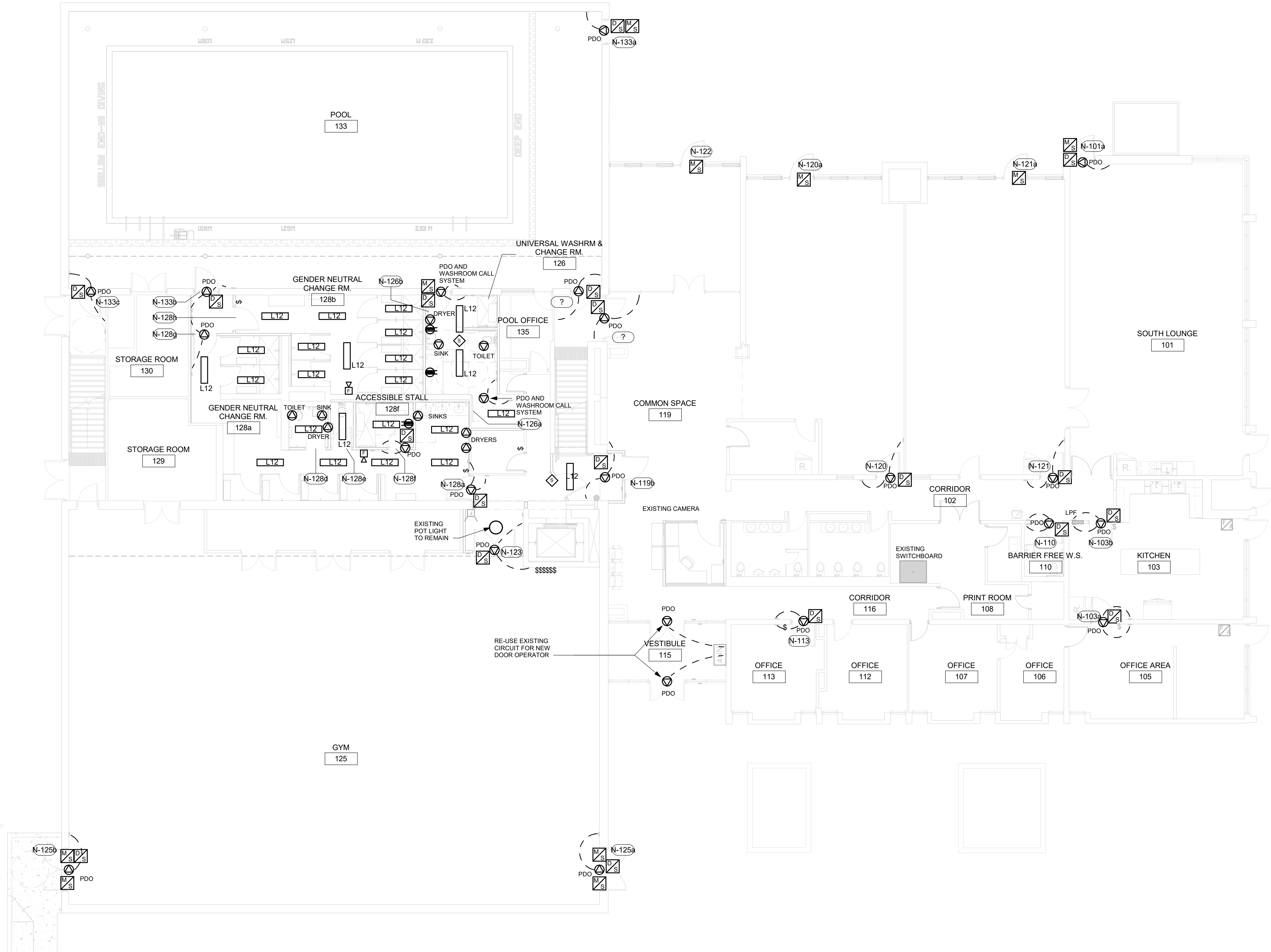
1  
E2101

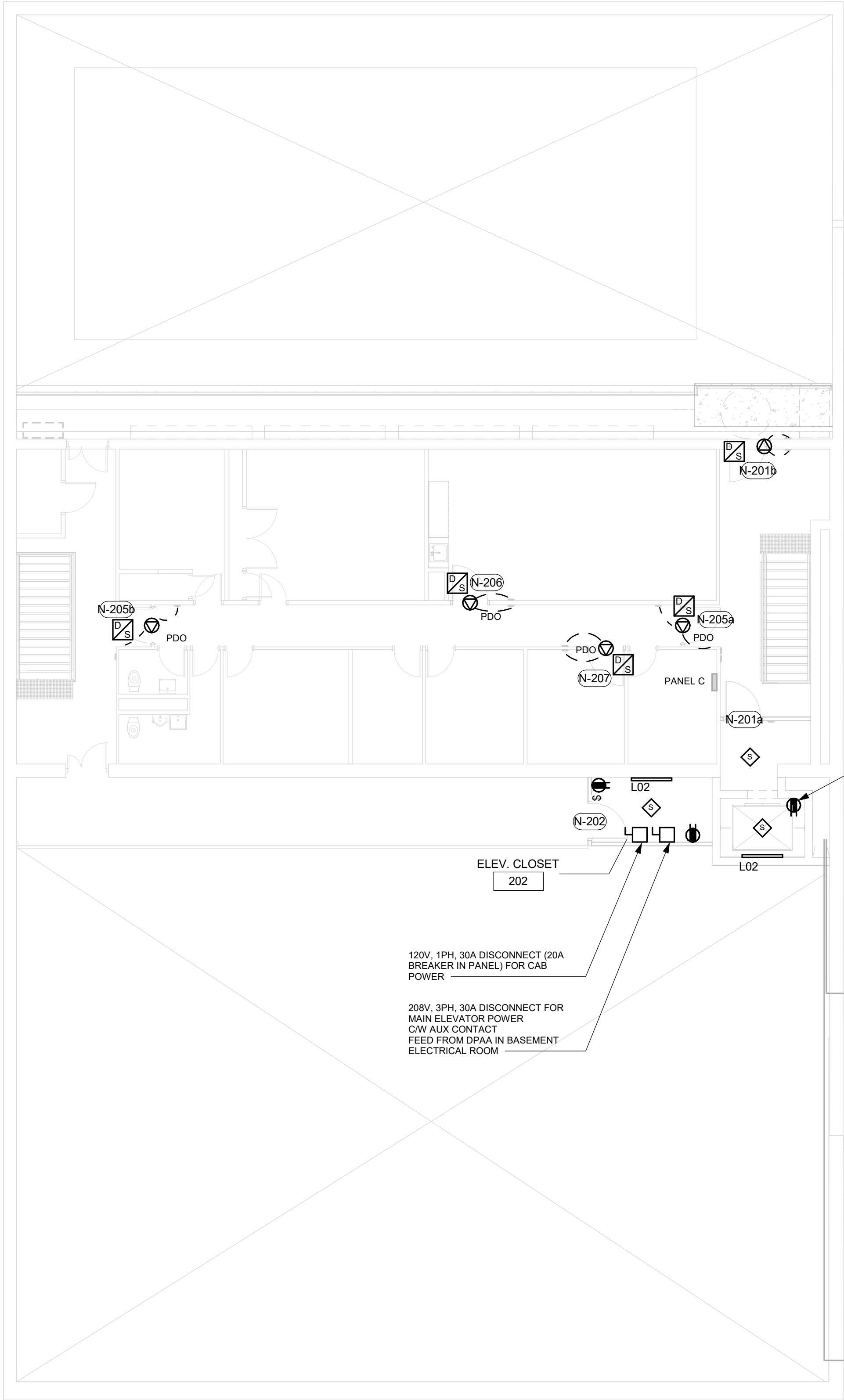
**POWER AND SYSTEMS PLAN FIRST FLOOR**

Scale: 1 : 100

NOTES:

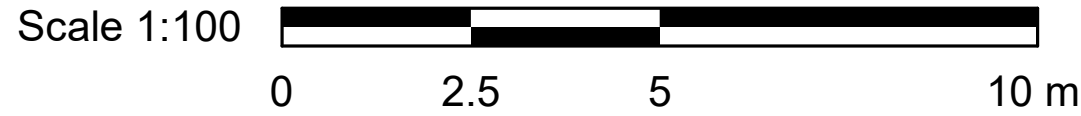
1. PROVIDE POWER DOOR OPERATOR CONNECTIONS AS INDICATED, 15A 120V 1P CIRCUITS UNLESS OTHERWISE NOTED. CIRCUITS SHOWN ARE FOR GROUPING PURPOSES ONLY. FILL SPACE AS AVAILABLE. CIRCUIT NEW LOADS FROM NEW 15A BREAKER CIRCUITS FROM PANEL LPE. TAKE INVENTORY OF DEMOLISHED CIRCUITS IN CHANGEROOM/WASHROOM AREA AND COMPILE LIST OF SPARE CIRCUITS AND ASSIGN TO NEW LOADS ACCORDINGLY. EXTEND WIRING/CONDUIT TO SUIT.
2. PROVIDE MONITOR SWITCH CONNECTIONS ON INDICATED DOORS. FOR NEW GYM DOORS CONNECT NEW MONITOR SWITCHES TO SECURITY ALARM SYSTEM IN BASEMENT STORAGE ROOM 13.
3. PROVIDE NEW LIGHTS IN CHANGE ROOMS AS INDICATED, SURFACE MOUNT ON CONCRETE CEILING.
4. PROVIDE NEW FIRE ALARM SPEAKERS TO REPLACE EXISTING IN CHANGE ROOMS.





- NOTES:
1. PROVIDE POWER DOOR OPERATOR CONNECTIONS AS INDICATED, 15A 120V 1P CIRCUITS UNLESS OTHERWISE NOTED. CIRCUITS SHOWN ARE FOR GROUPING PURPOSES ONLY, FILL SPACE AS AVAILABLE.
  2. PROVIDE 6 RELAY CONNECTIONS FOR NEW ELEVATOR CONNECTIONS FOR ELEVATOR CONTROLS. PROVIDE UPGRADE TO PANEL POWER SUPPLY AS NECESSARY.

1  
E2102 POWER AND SYSTEMS PLAN SECOND FLOOR  
Scale: 1 : 100



CLIENT

**CITY OF TORONTO**

**Toronto**

55 John ST.  
TORONTO, ON  
M5V 3C6

**COPYRIGHT**  
This drawing has been prepared solely for the intended use, thus any reproduction or distribution for any purpose other than authorized by IBI Group is forbidden. Written dimensions shall have precedence over scaled dimensions. Contractors shall verify and be responsible for all dimensions and conditions on the job, and IBI Group shall be informed of any variations from the dimensions and conditions shown on the drawing. Shop drawings shall be submitted to IBI Group for general conformance before proceeding with fabrication.

**IBI Group Professional Services (Canada) Inc.**  
is a member of the IBI Group of companies

ISSUES		
No.	DESCRIPTION	DATE
A.	50% SUBMISSION	2021-09-23
B	90% SUBMISSION	2022-01-04
C	ISSUED FOR PERMIT	2022-01-04
D	ISSUED FOR TENDER	2022-05-25
E	ISSUED FOR TENDER	2022-09-12
F	RE-ISSUED FOR TENDER	2022-11-01

CONSULTANTS

SEAL

PRIME CONSULTANT

**IBI** **GROUP**  
175 Galaxy Blvd, Unit 100  
Toronto, ON M9W 0C9, Canada  
tel 416 679 1930 fax 416 675 4620  
ibigroup.com

PROJECT TITLE

**CITY OF TORONTO  
ACCESSIBILITY UPGRADES**

PROJECT ADDRESS

**West Scarborough Community  
Centre**  
313 Pharmacy Ave.

PROJECT NO:  
122260

DRAWN BY: <b>V. MAC</b>	CHECKED BY: <b>M. BOJIC</b>
PROJECT MGR: <b>F. BOLOURIAN</b>	APPROVED BY: <b>P. WILLIAMS</b>

SHEET TITLE

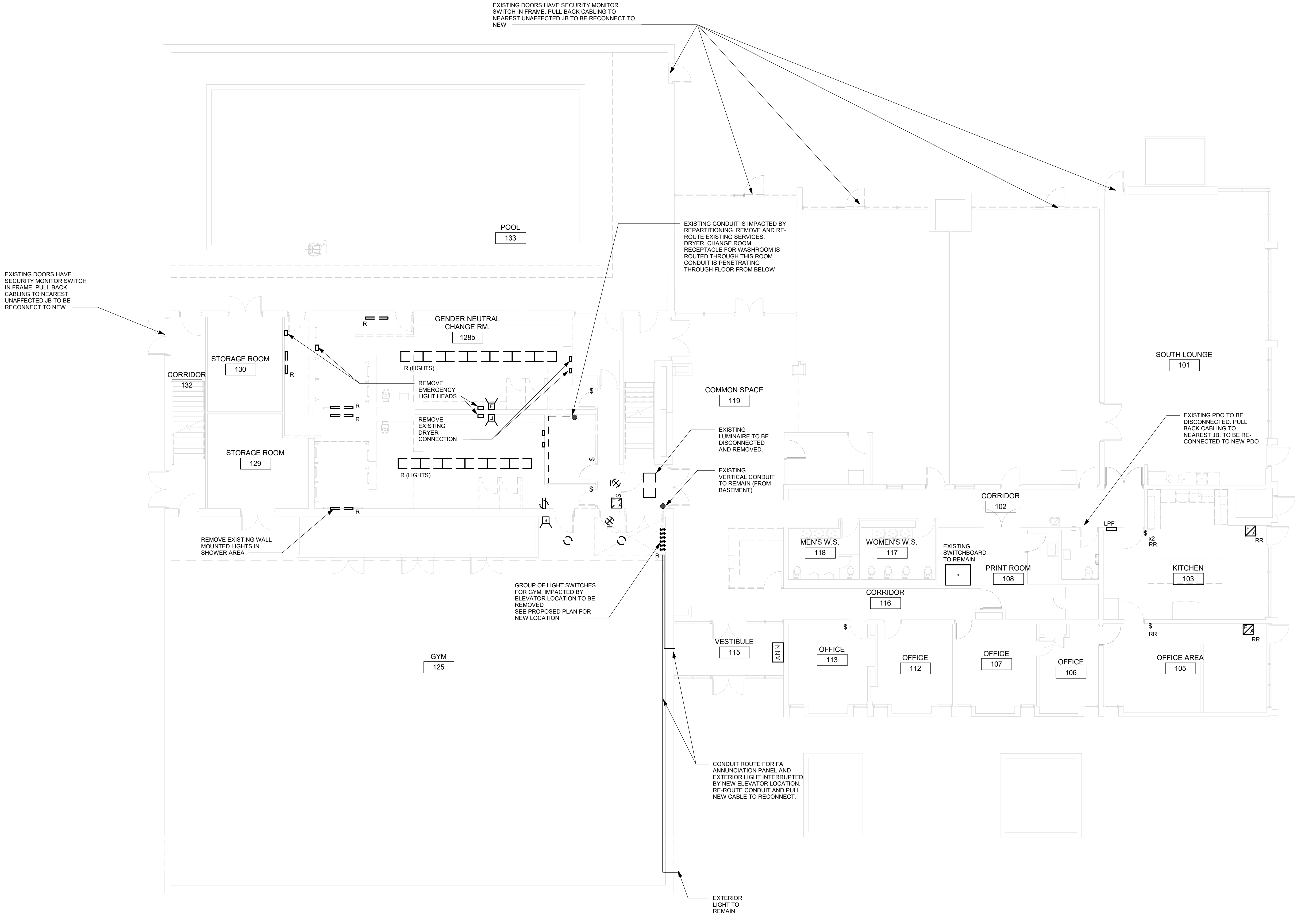
**POWER & SYSTEMS  
PLAN 2ND FLOOR**

SHEET NUMBER	ISSUE
<b>G28-184-E2102</b>	<b>F</b>

2022-10-25 2:16:50 PM

1 POWER AND SYSTEMS DEMOLITION PLAN FIRST FLOOR  
E1101 Scale: 1 : 100

- NOTES:
- LIGHTING SWITCHES INDICATED ARE IMPACTED BY DOOR OR WALL DEMOLITION AND ARE TO BE REMOVED. SEE PROPOSED PLAN FOR NEW LOCATIONS



CLIENT

CITY OF TORONTO



55 John ST.  
TORONTO, ON  
M5V 3C6

COPYRIGHT

This drawing has been prepared solely for the intended use, thus any reproduction or distribution for any purpose other than authorized by IBI Group is forbidden. Written dimensions shall have precedence over scaled dimensions. Contractors shall verify and be responsible for all dimensions and conditions on the job, and IBI Group shall be informed of any variations from the dimensions and conditions shown on the drawing. Shop drawings shall be submitted to IBI Group for general conformance before proceeding with fabrication.

**IBI Group Professional Services (Canada) Inc.**  
is a member of the IBI Group of companies

ISSUES

No.	DESCRIPTION	DATE
A	50% SUBMISSION	2021-09-23
B	90% SUBMISSION	2022-01-04
C	ISSUED FOR PERMIT	2022-01-04
D	ISSUED FOR TENDER	2022-05-25
E	ISSUED FOR TENDER	2022-09-12
F	RE-ISSUED FOR TENDER	2022-11-01

CONSULTANTS

SEAL

PRIME CONSULTANT



**IBI GROUP**  
175 Galaxy Blvd, Unit 100  
Toronto, ON M9W 0C9, Canada  
tel 416 679 1930 fax 416 675 4620  
ibigroup.com

PROJECT TITLE

CITY OF TORONTO  
ACCESSIBILITY UPGRADES

PROJECT ADDRESS

West Scarborough Community  
Centre  
313 Pharmacy Ave.

PROJECT NO:  
122260

DRAWN BY:  
V. MAC

CHECKED BY:  
M. BOJIC

PROJECT MGR:  
F. BOLOURIAN

APPROVED BY:  
P. WILLIAMS

SHEET TITLE

ELECTRICAL  
DEMOLITION PLAN 1ST  
FLOOR

SHEET NUMBER  
G28-184-E1101

ISSUE  
F

BM 380/122260 - CoT TAU Upgrades R2020122260-TAU-28-184-313PHRMICY-E-R20.rvt  
1 m

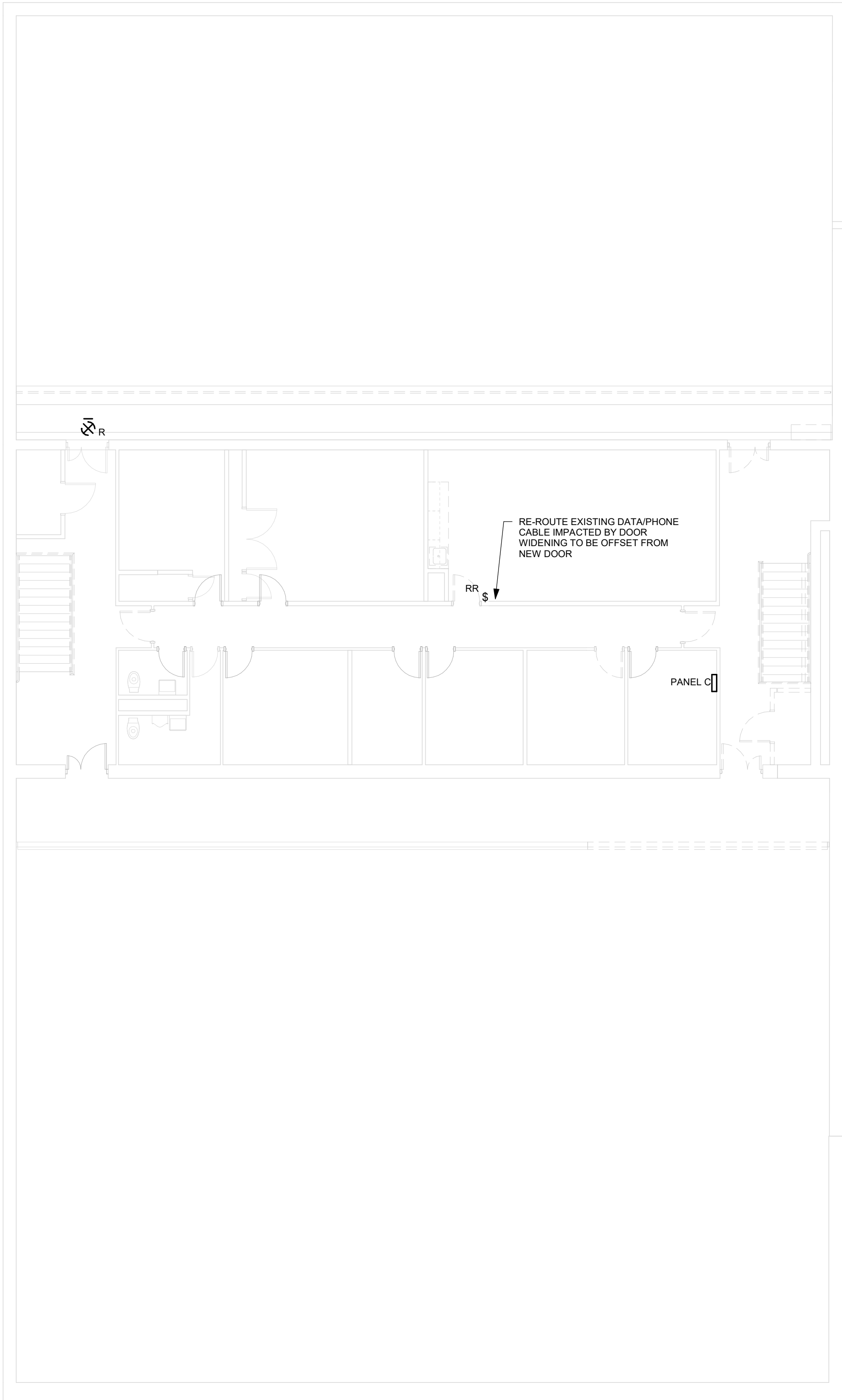
2022-10-25 2:16:54 PM

1  
E1102

POWER AND SYSTEMS DEMOLITION PLAN SECOND FLOOR

Scale: 1 : 100

Scale 1:100



CLIENT

CITY OF TORONTO



55 John ST.  
TORONTO, ON  
M5V 3C6

COPYRIGHT

This drawing has been prepared solely for the intended use. Thus any reproduction or distribution for any purpose other than authorized by IBI Group is forbidden. Written dimensions shall have precedence over scaled dimensions. Contractors shall verify and be responsible for all dimensions and conditions on the job, and IBI Group shall be informed of any variations from the dimensions and conditions shown on the drawing. Shop drawings shall be submitted to IBI Group for general conformance before proceeding with fabrication.

IBI Group Professional Services (Canada) Inc.  
is a member of the IBI Group of companies

ISSUES

No.	DESCRIPTION	DATE
A	50% SUBMISSION	2021-09-23
B	90% SUBMISSION	2022-01-04
C	ISSUED FOR PERMIT	2022-01-04
D	ISSUED FOR TENDER	2022-05-25
E	ISSUED FOR TENDER	2022-09-12
F	RE-ISSUED FOR TENDER	2022-11-01

CONSULTANTS

SEAL

PRIME CONSULTANT



IBI GROUP  
175 Galaxy Blvd, Unit 100  
Toronto, ON M9W 0C9, Canada  
tel 416 679 1930 fax 416 675 4620  
ibigroup.com

PROJECT TITLE

CITY OF TORONTO  
ACCESSIBILITY UPGRADES

PROJECT ADDRESS

West Scarborough Community  
Centre  
313 Pharmacy Ave.

PROJECT NO:

122260

DRAWN BY:

V. MAC

CHECKED BY:

M. BOJIC

PROJECT MGR:

F. BOLOURIAN

APPROVED BY:

P. WILLIAMS

SHEET TITLE

ELECTRICAL  
DEMOLITION PLAN 2ND  
FLOOR

SHEET NUMBER

G28-184-E1102

ISSUE

F

BIW 380/1122260 - CoT TAU Upgrades R20201122260-TAU-28-184-313PHRMICY-E-R20.rvt 1/1

ELECTRICAL DRAWING LIST	
Sheet Number	Sheet Name
E0000	DRAWING LIST
E1100	ELECTRICAL DEMOLITION PLAN BASEMENT
E1101	ELECTRICAL DEMOLITION PLAN 1ST FLOOR
E1102	ELECTRICAL DEMOLITION PLAN 2ND FLOOR
E2100	POWER & SYSTEMS PLAN BASEMENT
E2101	POWER & SYSTEMS PLAN 1ST FLOOR
E2102	POWER & SYSTEMS PLAN 2ND FLOOR

CLIENT

CITY OF TORONTO



55 John ST.  
TORONTO, ON  
M5V 3C6

**COPYRIGHT**  
This drawing has been prepared solely for the intended use. Thus any reproduction or distribution for any purpose other than authorized by IBI Group is forbidden. Written dimensions shall have precedence over scaled dimensions. Contractors shall verify and be responsible for all dimensions and conditions on the job, and IBI Group shall be informed of any variations from the dimensions and conditions shown on the drawing. Shop drawings shall be submitted to IBI Group for general conformance before proceeding with fabrication.

**IBI Group Professional Services (Canada) Inc.**  
is a member of the IBI Group of companies

ISSUES		
No.	DESCRIPTION	DATE
A	50% SUBMISSION	2021-09-23
B	90% SUBMISSION	2022-01-04
C	ISSUED FOR PERMIT	2022-01-04
D	ISSUED FOR TENDER	2022-05-25
E	ISSUED FOR TENDER	2022-09-12
F	RE-ISSUED FOR TENDER	2022-11-01

CONSULTANTS

SEAL

PRIME CONSULTANT



IBI GROUP

175 Galaxy Blvd, Unit 100  
Toronto, ON M9W 0C9, Canada  
tel 416 679 1930 fax 416 675 4620  
ibigroup.com

PROJECT TITLE

CITY OF TORONTO  
ACCESSIBILITY UPGRADES

PROJECT ADDRESS

West Scarborough Community  
Centre  
313 Pharmacy Ave.

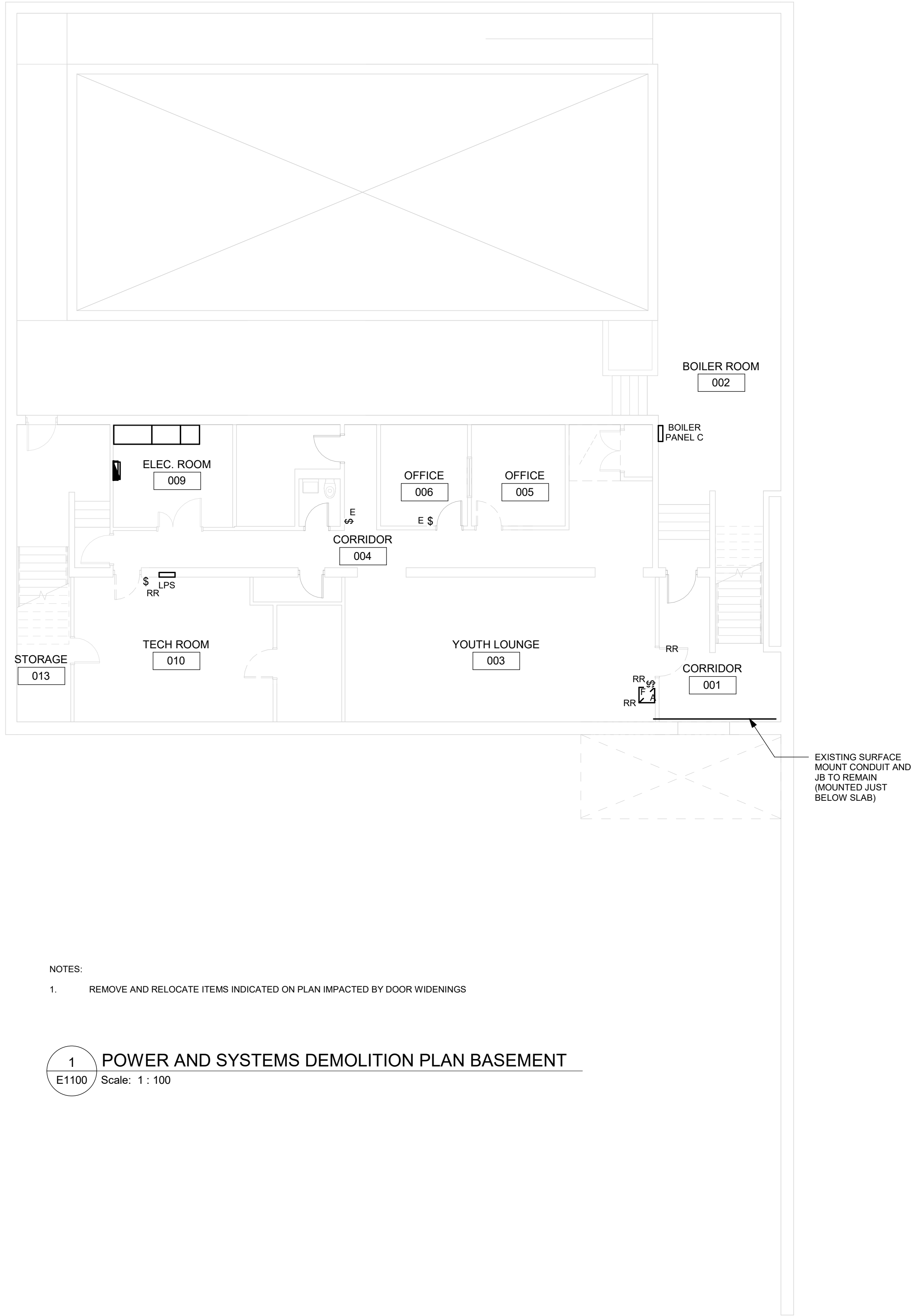
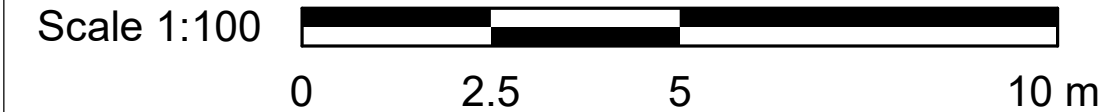
PROJECT NO: 122260	
DRAWN BY: V. MAC	CHECKED BY: M. BOJIC
PROJECT MGR: F. BOLOURIAN	APPROVED BY: P. WILLIAMS

SHEET TITLE

DRAWING LIST

SHEET NUMBER	ISSUE
G28-184-E0000	F

2022-10-25 2:17:03 PM



- NOTES:
1. REMOVE AND RELOCATE ITEMS INDICATED ON PLAN IMPACTED BY DOOR WIDENINGS

**1**  
E1100

**POWER AND SYSTEMS DEMOLITION PLAN BASEMENT**

Scale: 1 : 100

CLIENT

**CITY OF TORONTO**

55 John ST.  
TORONTO, ON  
M5V 3C6

**COPYRIGHT**  
This drawing has been prepared solely for the intended use. Thus any reproduction or distribution for any purpose other than authorized by IBI Group is forbidden. Written dimensions shall have precedence over scaled dimensions. Contractors shall verify and be responsible for all dimensions and conditions on the job, and IBI Group shall be informed of any variations from the dimensions and conditions shown on the drawing. Shop drawings shall be submitted to IBI Group for general conformance before proceeding with fabrication.

**IBI Group Professional Services (Canada) Inc.**  
is a member of the IBI Group of companies

ISSUES		
No.	DESCRIPTION	DATE
A	50% SUBMISSION	2021-09-23
B	90% SUBMISSION	2022-01-04
C	ISSUED FOR PERMIT	2022-01-04
D	ISSUED FOR TENDER	2022-05-25
E	ISSUED FOR TENDER	2022-09-12
F	RE-ISSUED FOR TENDER	2022-11-01

CONSULTANTS

SEAL

PRIME CONSULTANT

**IBI GROUP**  
175 Galaxy Blvd, Unit 100  
Toronto, ON M9W 0C9, Canada  
tel 416 679 1930 fax 416 675 4620  
ibigroup.com

PROJECT TITLE

**CITY OF TORONTO  
ACCESSIBILITY UPGRADES**

PROJECT ADDRESS

**West Scarborough Community  
Centre**  
313 Pharmacy Ave.

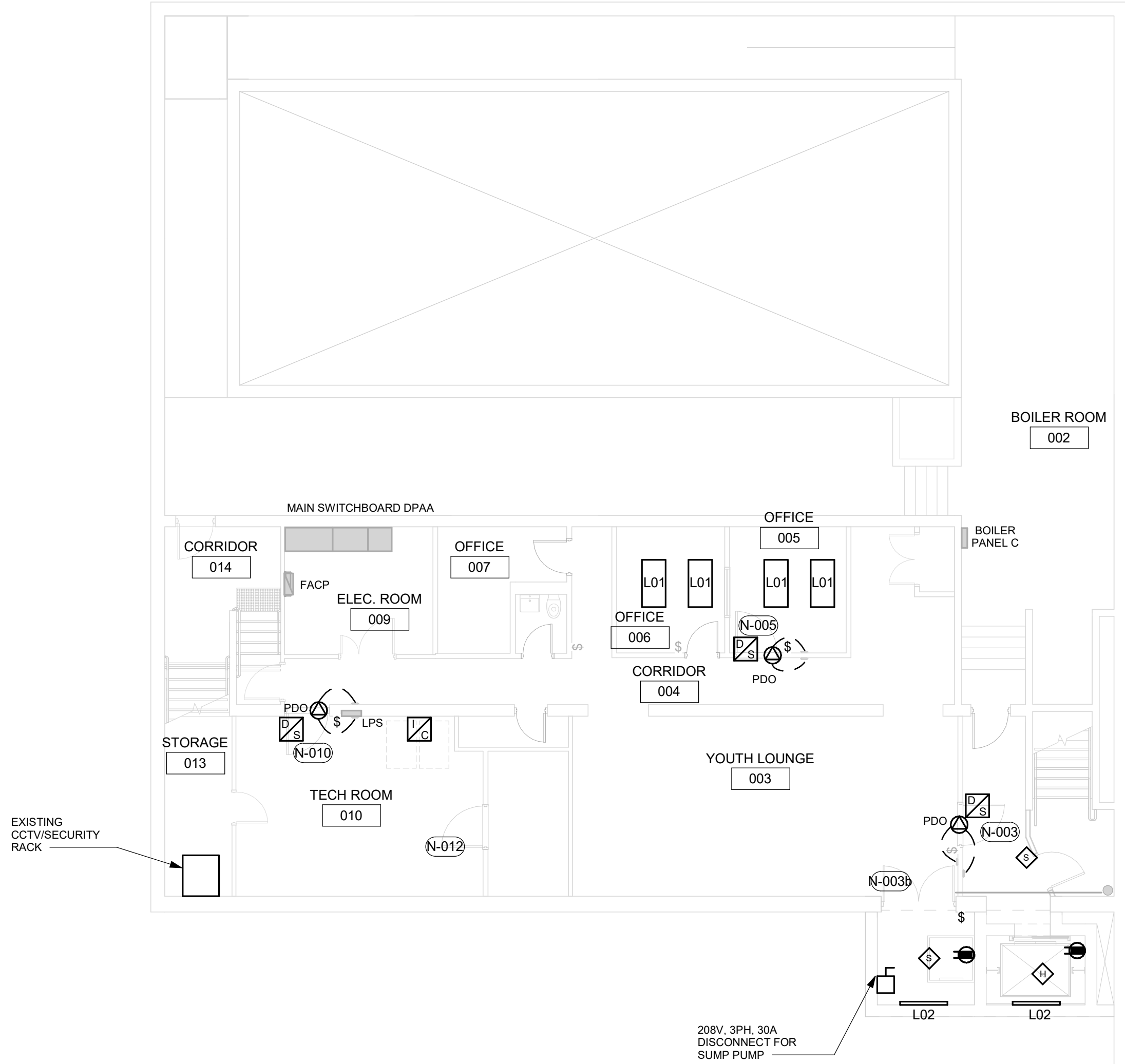
PROJECT NO: 122260	
DRAWN BY: <b>V. MAC</b>	CHECKED BY: <b>M. BOJIC</b>
PROJECT MGR: <b>F. BOLOURIAN</b>	APPROVED BY: <b>P. WILLIAMS</b>

SHEET TITLE

**ELECTRICAL  
DEMOLITION PLAN  
BASEMENT**

SHEET NUMBER	ISSUE
<b>G28-184-E1100</b>	<b>F</b>

BIW 380/122260 - CoT TAU Upgrades R2020122260-TAU-28-184-313PHRMCY-E-R20.rvt  
1 m



- NOTES:
1. PROVIDE POWER DOOR OPERATOR CONNECTIONS AS INDICATED, 15A 120V 1P CIRCUITS UNLESS OTHERWISE NOTED. CIRCUITS SHOWN ARE FOR GROUPING PURPOSES ONLY; FILL SPACE AS AVAILABLE.

1 POWER AND SYSTEMS PLAN BASEMENT  
E2100 Scale: 1 : 100



CLIENT

CITY OF TORONTO

55 John ST.  
TORONTO, ON  
M5V 3C6

**COPYRIGHT**  
This drawing has been prepared solely for the intended use, thus any reproduction or distribution for any purpose other than authorized by IBI Group is forbidden. Written dimensions shall have precedence over scaled dimensions. Contractors shall verify and be responsible for all dimensions and conditions on the job, and IBI Group shall be informed of any variations from the dimensions and conditions shown on the drawing. Shop drawings shall be submitted to IBI Group for general conformance before proceeding with fabrication.

**IBI Group Professional Services (Canada) Inc.**  
is a member of the IBI Group of companies

ISSUES		
No.	DESCRIPTION	DATE
A.	50% SUBMISSION	2021-09-23
B	90% SUBMISSION	2022-01-04
C	ISSUED FOR PERMIT	2022-01-04
D	ISSUED FOR TENDER	2022-05-25
E	ISSUED FOR TENDER	2022-09-12
F	RE-ISSUED FOR TENDER	2022-11-01

CONSULTANTS

SEAL

PRIME CONSULTANT

**IBI GROUP**  
175 Galaxy Blvd, Unit 100  
Toronto, ON M9W 0C9, Canada  
tel 416 679 1930 fax 416 675 4620  
ibigroup.com

PROJECT TITLE

CITY OF TORONTO  
ACCESSIBILITY UPGRADES

PROJECT ADDRESS

West Scarborough Community  
Centre  
313 Pharmacy Ave.

PROJECT NO: 122260	
DRAWN BY: V. MAC	CHECKED BY: M. BOJIC
PROJECT MGR: F. BOLOURIAN	APPROVED BY: P. WILLIAMS

SHEET TITLE

POWER & SYSTEMS  
PLAN BASEMENT

SHEET NUMBER	ISSUE
G28-184-E2100	F