

ELECTRICAL DRAWING LIST	
Sheet Number	Sheet Name
E0000	DRAWING LIST
E1101	ELECTRICAL DEMOLITION PLAN 1ST FLOOR
E2101	POWER & SYSTEMS PLAN 1ST FLOOR

CLIENT  
**CITY OF TORONTO**  
  
 55 John ST.  
 TORONTO, ON  
 M5V 3C6

**COPYRIGHT**  
 This drawing has been prepared solely for the intended use. Any reproduction or distribution for any purpose other than authorized by IBI Group is forbidden. Written dimensions shall have precedence over scaled dimensions. Contractors shall verify and be responsible for all dimensions and conditions on the job, and IBI Group shall be informed of any variations from the dimensions and conditions shown on the drawing. Shop drawings shall be submitted to IBI Group for general conformance before proceeding with fabrication.

**IBI Group Professional Services (Canada) Inc.**  
 is a member of the IBI Group of companies

ISSUES		
No.	DESCRIPTION	DATE
0	ISSUED FOR CONSTRUCTION	2021-10-19

CONSULTANTS

SEAL

**PRIME CONSULTANT**  
  
**IBI GROUP**  
 175 Galaxy Blvd, Unit 100  
 Toronto, ON M9W 0C9, Canada  
 Tel: 416 679 1930 fax 416 675 4620  
 ibigroup.com

**PROJECT TITLE**  
 CITY OF TORONTO  
 ACCESSIBILITY UPGRADES

**PROJECT ADDRESS**  
 FIRE HALL 141  
 4100 KEELE ST

**PROJECT NO:**  
 9119- 19- 0162 / IBI 122260

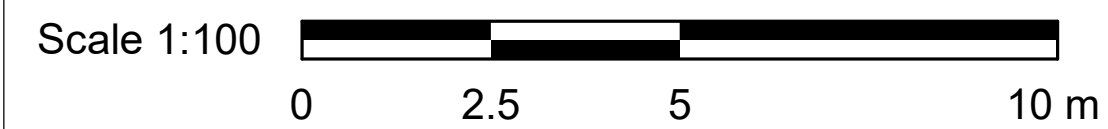
<b>DRAWN BY:</b> M. BOJIC	<b>CHECKED BY:</b> P. WILLIAMS
------------------------------	-----------------------------------

<b>PROJECT MGR:</b> F. BOLOURIAN	<b>APPROVED BY:</b> P. WILLIAMS
-------------------------------------	------------------------------------

**SHEET TITLE**  
 DRAWING LIST

<b>SHEET NUMBER</b> G08-217-E0000	<b>ISSUE</b> 0
--------------------------------------	-------------------

2021-10-20 1:54:43 PM



C:\Users\mihajlo.bojic\Documents\REVIT\2020\122260-TAU-9-217-4100\KEELE-E-R20\_mihajlo.bojic.rvt

**ISSUES**

No.	DESCRIPTION	DATE
0	ISSUED FOR CONSTRUCTION	2021-10-19

**CONSULTANTS**

**SEAL**

**PRIME CONSULTANT**  
 **IBI GROUP**  
 175 Galaxy Blvd, Unit 100  
 Toronto, ON M9W 0C9, Canada  
 Tel: 416 679 1930 Fax: 416 675 4620  
 ibigroup.com

**PROJECT TITLE**  
 CITY OF TORONTO  
 ACCESSIBILITY UPGRADES

**PROJECT ADDRESS**  
 FIRE HALL 141  
 4100 KEELE ST

**PROJECT NO:**  
 9119- 19- 0162 / IBI 122260

**DRAWN BY:**  
 M. BOJIC

**CHECKED BY:**  
 P. WILLIAMS

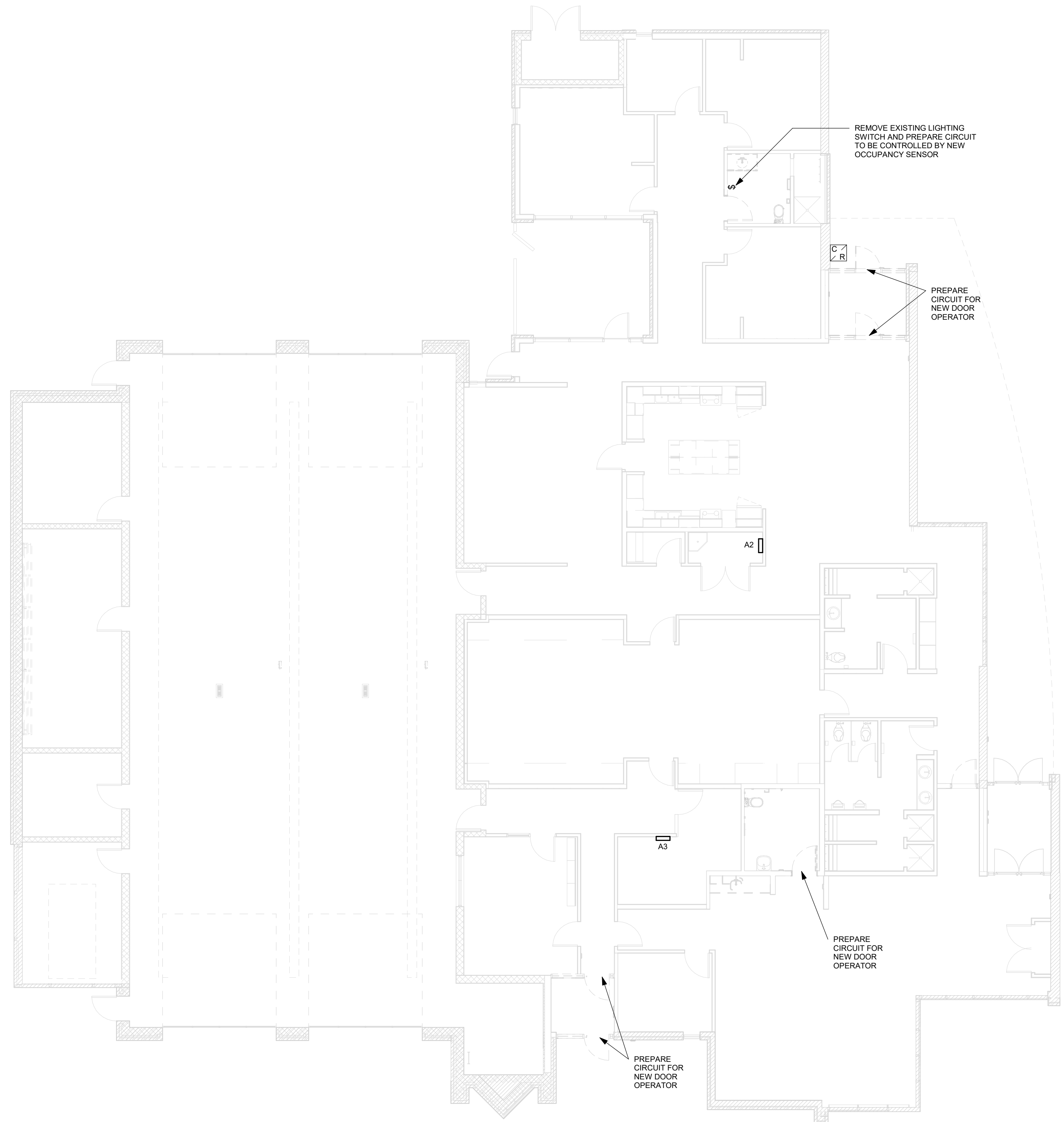
**PROJECT MGR:**  
 F. BOLOURIAN

**APPROVED BY:**  
 P. WILLIAMS

**SHEET TITLE**  
 ELECTRICAL  
 DEMOLITION PLAN 1ST  
 FLOOR

**SHEET NUMBER**  
 G08-217-E1101

**ISSUE**  
 0



**1** ELECTRICAL DEMOLITION PLAN 1ST FLOOR  
 E1101 Scale: 1 : 100

- NOTES:**
- REMOVE EXISTING POWER DOOR OPERATOR LOW VOLTAGE CABLING AND CONDUIT WHERE NEW DOOR OPERATOR AND BUTTONS ARE BEING INSTALLED.



**COPYRIGHT**  
 This drawing has been prepared solely for the intended use. If any reproduction or distribution for any purpose other than authorized by IBI Group is forbidden. Written dimensions shall have precedence over scaled dimensions. Contractors shall verify and be responsible for all dimensions and conditions on the job, and IBI Group shall be informed of any variations from the dimensions and conditions shown on the drawing. Shop drawings shall be submitted to IBI Group for general conformance before proceeding with fabrication.

**IBI Group Professional Services (Canada) Inc.**  
 is a member of the IBI Group of companies

**ISSUES**

No.	DESCRIPTION	DATE
0	ISSUED FOR CONSTRUCTION	2021-10-19

**CONSULTANTS**

**SEAL**

**PRIME CONSULTANT**  
  
**IBI GROUP**  
 175 Galaxy Blvd, Unit 100  
 Toronto, ON M9W 0C9, Canada  
 Tel: 416 679 1930 Fax: 416 675 4620  
 ibigroup.com

**PROJECT TITLE**  
 CITY OF TORONTO  
 ACCESSIBILITY UPGRADES

**PROJECT ADDRESS**  
 FIRE HALL 141  
 4100 KEELE ST

**PROJECT NO:**  
 9119- 19- 0162 / IBI 122260

**DRAWN BY:**  
**M. BOJIC**

**CHECKED BY:**  
**P. WILLIAMS**

**PROJECT MGR:**  
**F. BOLOURIAN**

**APPROVED BY:**  
**P. WILLIAMS**

**SHEET TITLE**  
 POWER & SYSTEMS  
 PLAN 1ST FLOOR

**SHEET NUMBER**  
**G08-217-E2101**

**ISSUE**  
**0**



**1 POWER & SYSTEMS PLAN 1ST FLOOR**  
 E2101 Scale: 1 : 100

- PROVIDE POWER DOOR OPERATOR CIRCUIT CONNECTION AS INDICATED. PROVIDE CONDUIT/WIRE TO PUSH BUTTON DEVICES FROM DOOR OPERATOR. SEE ARCHITECTURAL PROPOSED PLAN FOR LOCATION OF PUSH BUTTON/WAVE TO OPEN DEVICES.
- PROVIDE DOOR SECURITY DEVICES AS INDICATED. PROVIDE CONDUIT/WIRING TO ACCESS CONTROL/SECURITY DEVICES AS SHOWN. FOR DRYWALL AREAS CONCEAL CONDUIT AND BOXES. FOR BLOCK WALL AREAS SURFACE MOUNT CONDUIT AND PAINT CONDUIT/BOX SAME COLOUR TONE AS WALL BEHIND IT.
- CIRCUITS SHOWN ARE FOR GROUPING PURPOSES ONLY. PROVIDE 15A BREAKER FOR EACH CIRCUIT UNLESS OTHERWISE NOTED.

