

COPYRIGHT
 This drawing has been prepared solely for the intended use. If any reproduction or distribution for any purpose other than authorized by IBI Group is forbidden. Written dimensions shall have precedence over scaled dimensions. Contractors shall verify and be responsible for all dimensions and conditions on the job, and IBI Group shall be informed of any variations from the dimensions and conditions shown on the drawing. Shop drawings shall be submitted to IBI Group for general conformance before proceeding with fabrication.

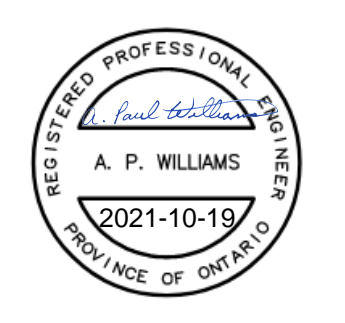
IBI Group Professional Services (Canada) Inc.
 is a member of the IBI Group of companies

ISSUES

No.	DESCRIPTION	DATE
0	ISSUED FOR CONSTRUCTION	2021-10-19

CONSULTANTS

SEAL



PRIME CONSULTANT
 **IBI GROUP**
 175 Galaxy Blvd, Unit 100
 Toronto, ON M9W 0C3, Canada
 Tel: 416 679 1930 fax 416 675 4620
 ibigroup.com

PROJECT TITLE
 CITY OF TORONTO
 ACCESSIBILITY UPGRADES

PROJECT ADDRESS
 TORONTO ANIMAL
 SERVICES
 1300 SHEPPARD AVE W

PROJECT NO:
 9119- 19- 0162 / IBI 122260

DRAWN BY: M. BOJIC	CHECKED BY: P. WILLIAMS
PROJECT MGR: F. BOLOURIAN	APPROVED BY: P. WILLIAMS

SHEET TITLE
 DRAWING LIST

SHEET NUMBER G08-036-E0000	ISSUE 0
--------------------------------------	-------------------

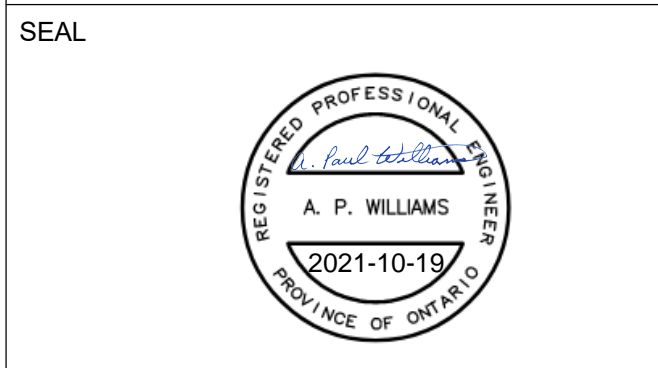
ELECTRICAL DRAWING LIST	
Sheet Number	Sheet Name
E0000	DRAWING LIST
E1101	ELECTRICAL DEMOLITION PLAN 1ST FLOOR
E2101	POWER & SYSTEMS PLAN 1ST FLOOR



COPYRIGHT
 This drawing has been prepared solely for the intended use. If any reproduction or distribution for any purpose other than authorized by IBI Group is forbidden. Written dimensions shall have precedence over scaled dimensions. Contractors shall verify and be responsible for all dimensions and conditions on the job, and IBI Group shall be informed of any variations from the dimensions and conditions shown on the drawing. Shop drawings shall be submitted to IBI Group for general conformance before proceeding with fabrication.
 IBI Group Professional Services (Canada) Inc.
 is a member of the IBI Group of companies

ISSUES		
No.	DESCRIPTION	DATE
0	ISSUED FOR CONSTRUCTION	2021-10-19

CONSULTANTS



PRIME CONSULTANT

IBI GROUP
 175 Galaxy Blvd, Unit 100
 Toronto, ON M9W 0C3, Canada
 Tel: 416 679 1930 fax: 416 675 4620
 ibigroup.com

PROJECT TITLE
**CITY OF TORONTO
 ACCESSIBILITY UPGRADES**

PROJECT ADDRESS
**TORONTO ANIMAL
 SERVICES
 1300 SHEPPARD AVE W**

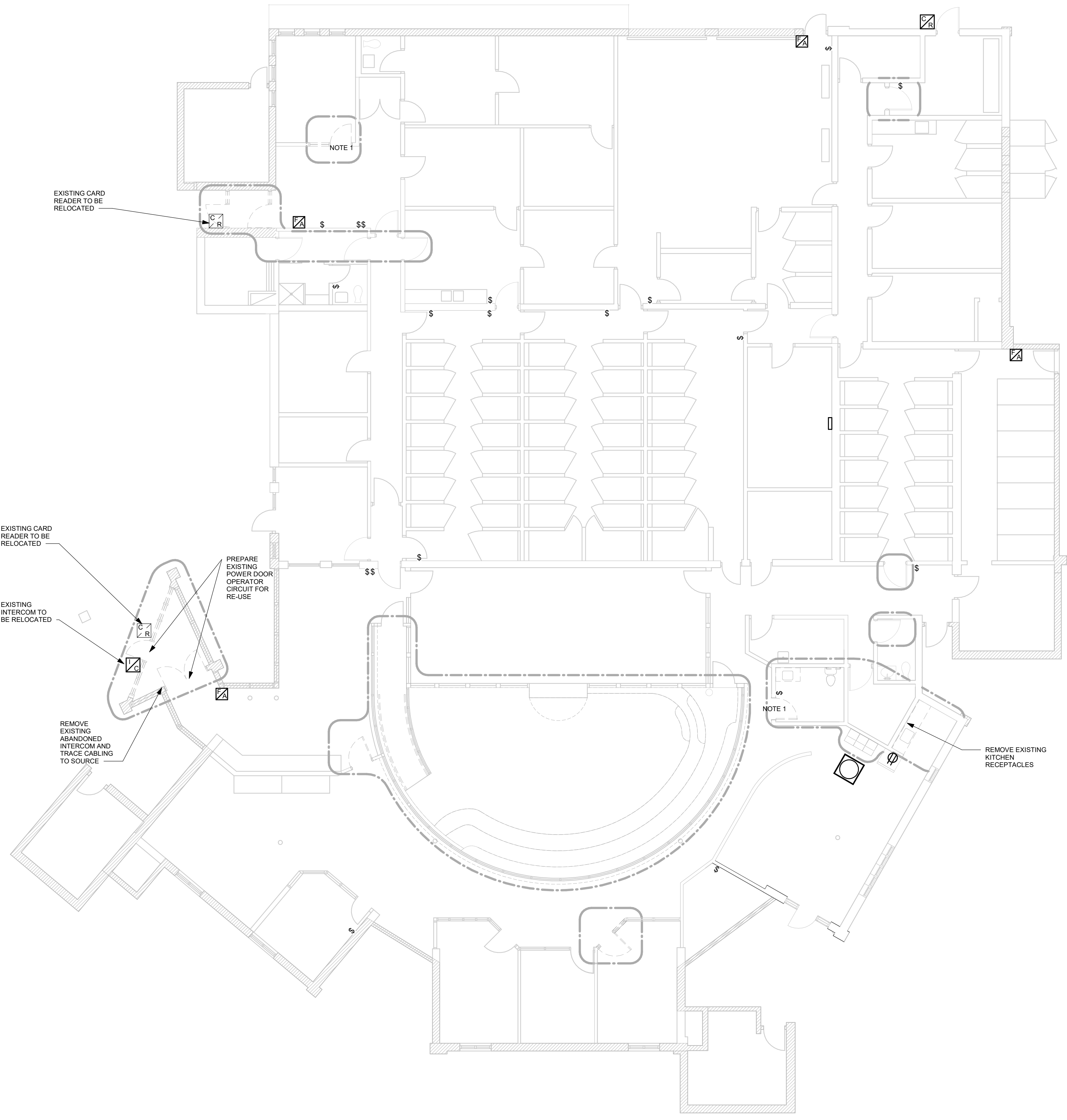
PROJECT NO:
 9119- 19- 0162 / IBI 122260

DRAWN BY: M. BOJIC	CHECKED BY: P. WILLIAMS
PROJECT MGR: F. BOLOURIAN	APPROVED BY: P. WILLIAMS

SHEET TITLE
**ELECTRICAL
 DEMOLITION PLAN 1ST
 FLOOR**

SHEET NUMBER G08-036-E1101	ISSUE 0
--------------------------------------	-------------------

- NOTES:
1. REMOVE EXISTING LIGHT SWITCHES INDICATED ON PLAN. PREPARE CIRCUITS FOR RE-USE FOR NEW LIGHT SWITCHES TO REPLACE DEMOLISHED.
 2. RELOCATE FIRE PULL STATIONS SHOWN TO COMPLIANT TADG HEIGHT AS INDICATED ON MOUNTING HEIGHTS SCHEDULE.
 3. ADJUST INDICATED CARD READERS TO NEW TADG COMPLIANT HEIGHTS AS INDICATED ON MOUNTING HEIGHTS SCHEDULE.



1 FIRST FLOOR DEMOLITION
 E1101 Scale: 1 : 100

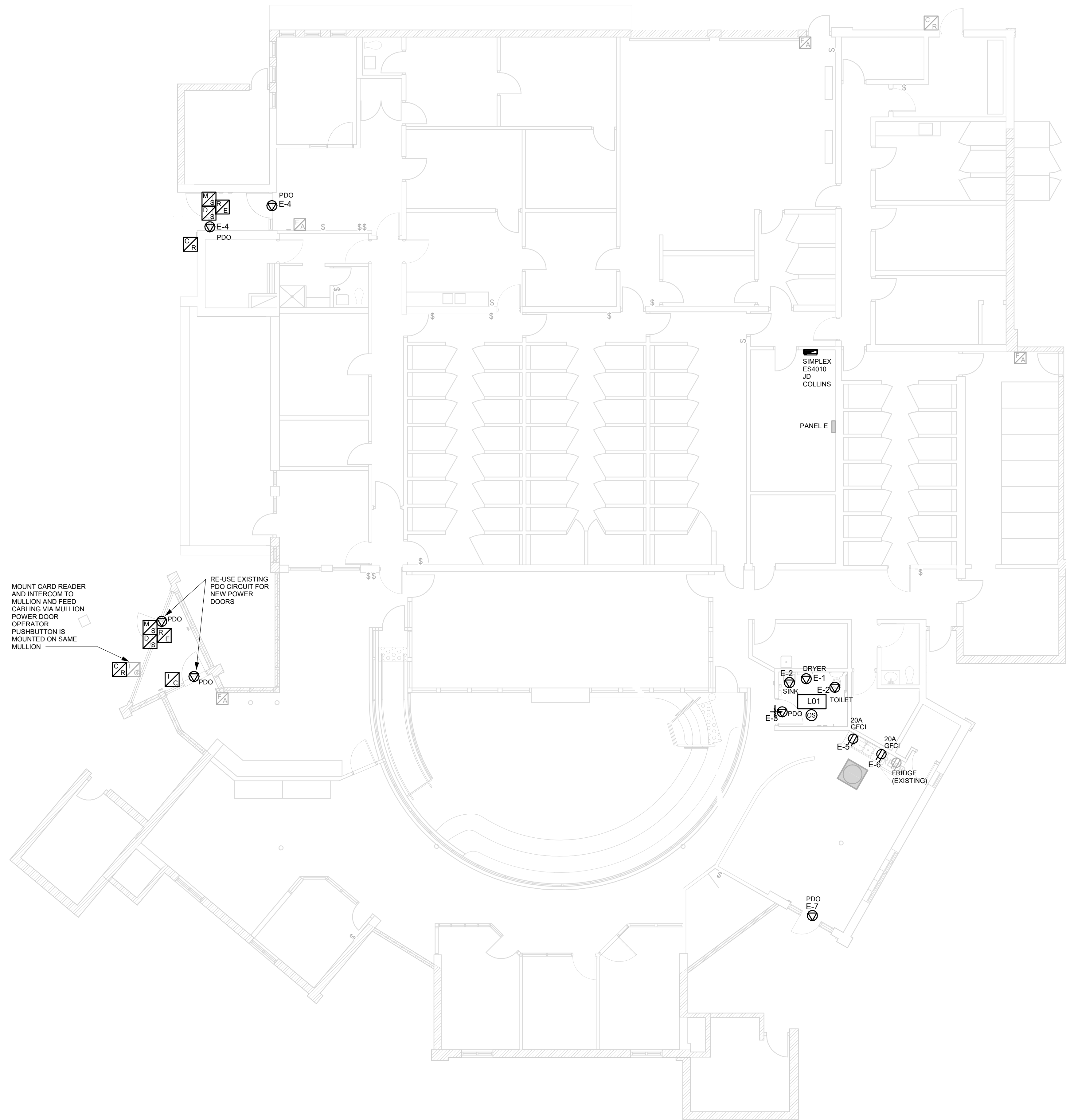


2021-10-20 1:51:34 PM

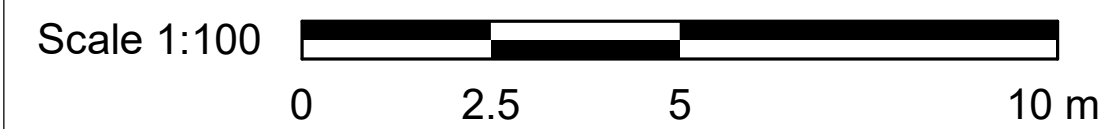
C:\Users\mhajlo.bojic\Documents\REVIT\2020\122260-TAU-36-1300SHIPOR-E-R20_mhajlo.bojic.rvt

NOTES:

1. PROVIDE POWER DOOR OPERATOR CIRCUIT CONNECTS AS INDICATED. PROVIDE CONDUIT/WIRE TO PUSH BUTTON/ WAVE TO OPEN DEVICES. SEE ARCHITECTURAL PROPOSED PLAN FOR LOCATION OF PUSH BUTTON/ WAVE TO OPEN DEVICES.
2. PROVIDE DOOR SECURITY HARD DEVICES AS INDICATED. PROVIDE CONDUIT/WIRING TO ACCESS CONTROL/SECURITY DEVICES AS SHOWN.
3. ADJUST FIRE ALARM PULL STATION HEIGHT TO COMPLIANT HEIGHT AS LISTED IN THE MOUNTING HEIGHTS SCHEDULE FOR ALL PULL STATIONS SHOWN.
4. PROVIDE NEW LIGHTING SWITCHES AT LOCATIONS INDICATED TO REPLACE DEMOLISHED IN SAME AREA. RE-CONNECT EXISTING LIGHTING CIRCUITS TO NEW SWITCHES.



1 FIRST FLOOR
E2101 Scale: 1 : 100



2021-10-20 1:51:44 PM

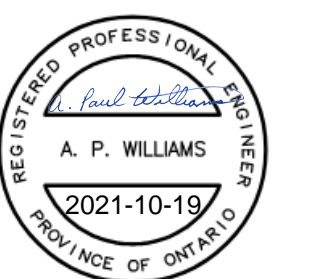
COPYRIGHT
This drawing has been prepared solely for the intended use. If any reproduction or distribution for any purpose other than authorized by IBI Group is forbidden. Written dimensions shall have precedence over scaled dimensions. Contractors shall verify and be responsible for all dimensions and conditions on the job, and IBI Group shall be informed of any variations from the dimensions and conditions shown on the drawing. Shop drawings shall be submitted to IBI Group for general conformance before proceeding with fabrication.

IBI Group Professional Services (Canada) Inc.
is a member of the IBI Group of companies

ISSUES		
No.	DESCRIPTION	DATE
0	ISSUED FOR CONSTRUCTION	2021-10-19

CONSULTANTS

SEAL



PRIME CONSULTANT

IBI GROUP
175 Galaxy Blvd, Unit 100
Toronto, ON M9W 0C3, Canada
tel 416 679 1930 fax 416 675 4620
ibigroup.com

PROJECT TITLE
CITY OF TORONTO
ACCESSIBILITY UPGRADES

PROJECT ADDRESS
TORONTO ANIMAL
SERVICES
1300 SHEPPARD AVE W

PROJECT NO:
9119- 19- 0162 / IBI 122260

DRAWN BY:
M. BOJIC

CHECKED BY:
P. WILLIAMS

PROJECT MGR:
F. BOLOURIAN

APPROVED BY:
P. WILLIAMS

SHEET TITLE
POWER & SYSTEMS
PLAN 1ST FLOOR

SHEET NUMBER
G08-036-E2101

ISSUE
0

C:\Users\mhajlo.bojic\Documents\REVIT\2020\122260-TAU-36-1300SHIPOR-E-R20_mhhaljo.bogic.rvt