

MECHANICAL DRAWING LIST	
Sheet Number	Sheet Name
M0001	MECHANICAL DRAWING LIST
M0201	EQUIPMENT SCHEDULE
M1101	DEMOLITION PLAN - GROUND FLOOR
M1102	DEMOLITION PLAN - SECOND FLOOR
M2101	PLUMBING - GROUND FLOOR
M2102	PLUMBING - SECOND FLOOR
M3101	DRAINAGE - GROUND FLOOR
M3102	DRAINAGE - SECOND FLOOR
M5101	HVAC - GROUND FLOOR
M5102	HVAC - SECOND FLOOR
M5103	HVAC - ROOF

CLIENT

CITY OF TORONTO



CITY OF TORONTO

Corporate Real Estate Management
Project Management Office
Metro Hall Toronto, ON
MSV 3C6

COPYRIGHT
This drawing has been prepared solely for the intended use. Thus any reproduction or distribution for any purpose other than authorized by IBI Group is forbidden. Written dimensions shall have precedence over scaled dimensions. Contractors shall verify and be responsible for all dimensions and conditions on the job, and IBI Group shall be informed of any variations from the dimensions and conditions shown on the drawing. Shop drawings shall be submitted to IBI Group for general conformance before proceeding with fabrication.

IBI Group Professional Services (Canada) Inc.
is a member of the IBI Group of companies

ISSUES		
No.	DESCRIPTION	DATE
00	ISSUED FOR CONSTRUCTION	2021-10-19

CONSULTANTS

SEAL



PRIME CONSULTANT



IBI GROUP
175 Galaxy Blvd, Unit 100
Toronto, ON M9W 0C9, Canada
tel 416 679 1930 fax 416 675 4620
ibigroup.com

PROJECT TITLE
CITY OF TORONTO
ACCESSIBILITY UPGRADES

PROJECT ADDRESS
FINCH YARD - BLDG D
1026 FINCH AVE W

PROJECT NO:
9119-19- 0612 / IBI 122260

DRAWN BY: K.DURUKAN	CHECKED BY: B.LIAO
-------------------------------	------------------------------

PROJECT MGR: F.BOLOURIAN	APPROVED BY: S. LIU
------------------------------------	-------------------------------

SHEET TITLE
MECHANICAL DRAWING
LIST

SHEET NUMBER	ISSUE
G08-013-M0001	00

EXHAUST FAN SCHEDULE									
TAG NO.	SERVICE	MANUFACTURER/ MODEL NO.	FAN			MOTOR			NOTES
			CAPACITY (LPS)	S.P. (Pa)	TYPE	HP	RPM	V/Ph/Hz	
EF-01	223 - OBC WASHROOM	GREENHECK MODEL SP-A190	71	91.4	CEILING FAN, DIRECT FAN	0.06	1400	115/60/1	CONTROLLED BY LIGHTING SWITCH, CW EXHAUST GRILL, DISCONNECT SWITCH, BACKDRAFT DAMPER

ELECTRICAL HEATER SCHEDULE									
TAG NO.	SERVICE	MANUFACTURER/ MODEL NO.	CAPACITY OUTPUT (KW)	V/Ph/Hz	WEIGHT (KG)	FAN		NOTES	
						POWER (KW)	FLOW (LPS)		
FAH-01	224 - BARRIER FREE FEMALE WASHROOM 1	OUELLET OACP2000	2	208/1/60	10.9	-	75	PROVIDE DISCONNECT SWITCH AND BUILT-IN THERMOSTAT	

CLIENT

CITY OF TORONTO



Corporate Real Estate Management
Project Management Office
Metro Hall Toronto, ON
MSV 3C6

COPYRIGHT
This drawing has been prepared solely for the intended use, thus any reproduction or distribution for any purpose other than authorized by IBI Group is forbidden. Written dimensions shall have precedence over scaled dimensions. Contractors shall verify and be responsible for all dimensions and conditions on the job, and IBI Group shall be informed of any variations from the dimensions and conditions shown on the drawing. Shop drawings shall be submitted to IBI Group for general conformance before proceeding with fabrication.

IBI Group Professional Services (Canada) Inc.
is a member of the IBI Group of companies

ISSUES		
No.	DESCRIPTION	DATE
00	ISSUED FOR CONSTRUCTION	2021-10-19

CONSULTANTS

SEAL



PRIME CONSULTANT



IBI GROUP
175 Galaxy Blvd, Unit 100
Toronto, ON M9W 0C9, Canada
tel 416 679 1930 fax 416 675 4620
ibigroup.com

PROJECT TITLE
CITY OF TORONTO
ACCESSIBILITY UPGRADES

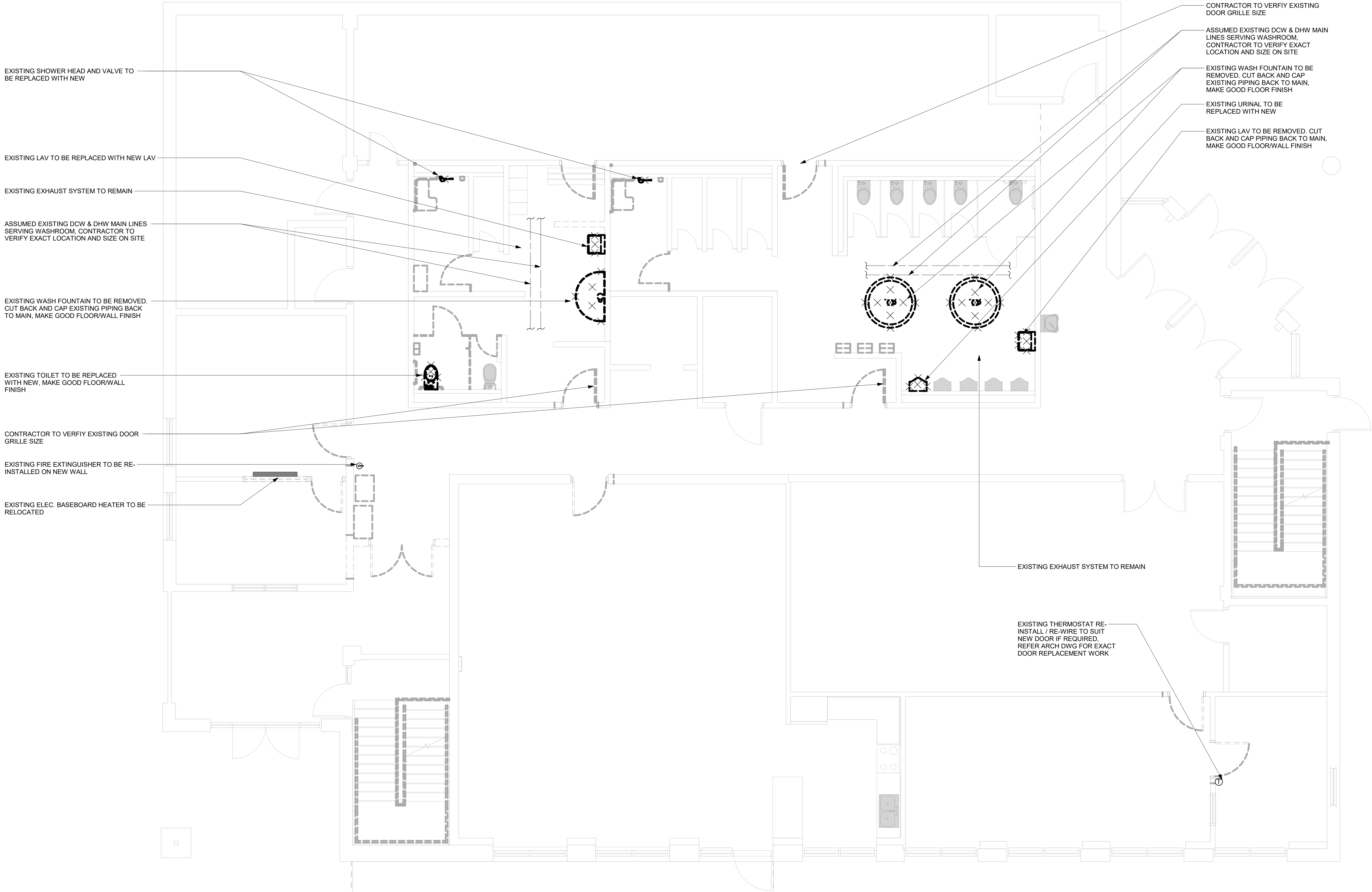
PROJECT ADDRESS
FINCH YARD - BLDG D
1026 FINCH AVE W

PROJECT NO: 9119-19- 0612 / IBI 122260	
DRAWN BY: K.DURUKAN	CHECKED BY: B.LIAO
PROJECT MGR: F.BOLOURIAN	APPROVED BY: S. LIU

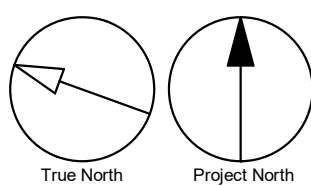
SHEET TITLE
EQUIPMENT SCHEDULE

SHEET NUMBER	ISSUE
G08-013-M0201	00

2021-10-19 9:29:28 AM



- GENERAL NOTES:
1. CONTRACTOR TO VERIFY SITE CONDITION.
 2. REMOVE AND CAP EXISTING SERVICES AS SHOWN ON THE DRAWING.
 3. ALL EXISTING SERVICES SHALL REMAIN UNLESS OTHERWISE NOTED.



CLIENT

CITY OF TORONTO


Corporate Real Estate Management
Project Management Office
Metro Hall Toronto, ON
MSV 3C6

COPYRIGHT
This drawing has been prepared solely for the intended use. Thus any reproduction or distribution for any purpose other than authorized by IBI Group is forbidden. Written dimensions shall have precedence over scaled dimensions. Contractors shall verify and be responsible for all dimensions and conditions on the job, and IBI Group shall be informed of any variations from the dimensions and conditions shown on the drawing. Shop drawings shall be submitted to IBI Group for general conformance before proceeding with fabrication.

IBI Group Professional Services (Canada) Inc.
is a member of the IBI Group of companies

ISSUES		
No.	DESCRIPTION	DATE
00	ISSUED FOR CONSTRUCTION	2021-10-19

CONSULTANTS

SEAL



PRIME CONSULTANT



PROJECT TITLE
**CITY OF TORONTO
ACCESSIBILITY UPGRADES**

PROJECT ADDRESS
**FINCH YARD - BLDG D
1026 FINCH AVE W**

PROJECT NO:
9119-19- 0612 / IBI 122260

DRAWN BY:
K.DURUKAN

CHECKED BY:
B.LIAO

PROJECT MGR:
F.BOLOURIAN

APPROVED BY:
S. LIU

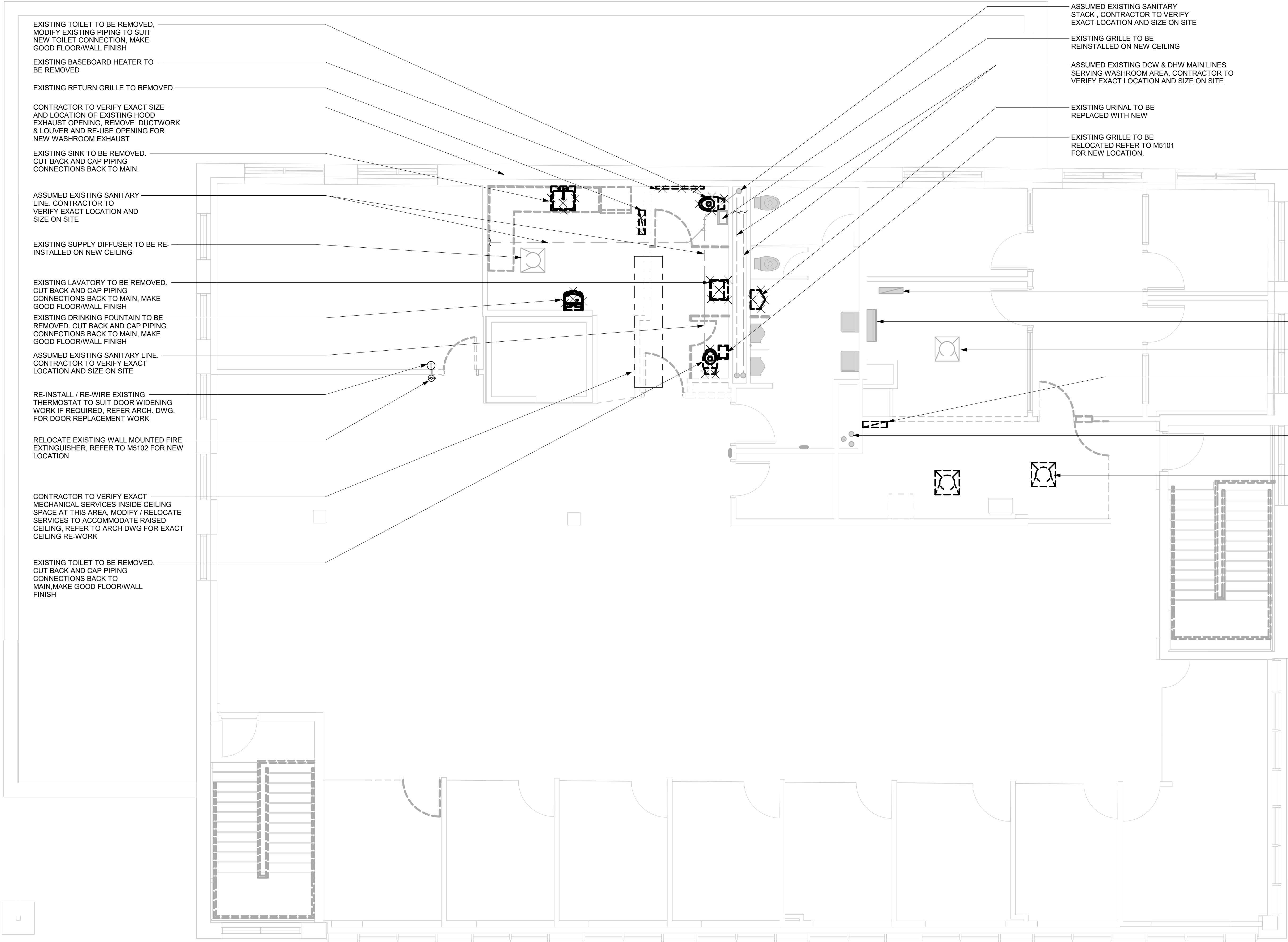
SHEET TITLE
**DEMOLITION PLAN -
GROUND FLOOR**

SHEET NUMBER
G08-013-M1101

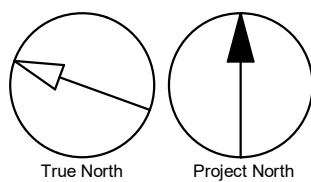
ISSUE
00

C:\Users\bingai.liao\Documents\REV\T2020\122260-TAU-6-13-1028FINCH_D-MAR20_bingai.liao.rvt 1/1m

2021-10-19 9:29:28 AM



GENERAL NOTES:
1. CONTRACTOR TO VERIFY SITE CONDITION.
2. REMOVE AND CAP EXISTING SERVICES AS SHOWN ON THE DRAWING.
3. ALL EXISTING SERVICES SHALL REMAIN UNLESS OTHERWISE NOTED.



CLIENT

CITY OF TORONTO


Corporate Real Estate Management
Project Management Office
Metro Hall Toronto, ON
M5V 3C6

COPYRIGHT
This drawing has been prepared solely for the intended use, thus any reproduction or distribution for any purpose other than authorized by IBI Group is forbidden. Written dimensions shall have precedence over scaled dimensions. Contractors shall verify and be responsible for all dimensions and conditions on the job, and IBI Group shall be informed of any variations from the dimensions and conditions shown on the drawing. Shop drawings shall be submitted to IBI Group for general conformance before proceeding with fabrication.

IBI Group Professional Services (Canada) Inc.
is a member of the IBI Group of companies

ISSUES		
No.	DESCRIPTION	DATE
00	ISSUED FOR CONSTRUCTION	2021-10-19

CONSULTANTS

SEAL



PRIME CONSULTANT

 **IBI GROUP**
175 Galaxy Blvd, Unit 100
Toronto, ON M9W 0C9, Canada
tel 416 679 1930 fax 416 675 4620
ibigroup.com

PROJECT TITLE
**CITY OF TORONTO
ACCESSIBILITY UPGRADES**

PROJECT ADDRESS
**FINCH YARD - BLDG D
1026 FINCH AVE W**

PROJECT NO:
9119-19- 0612 / IBI 122260

DRAWN BY:
K.DURUKAN

CHECKED BY:
G. VERNESCU

PROJECT MGR:
F.BOLOURIAN

APPROVED BY:
B.LIAO

SHEET TITLE
**DEMOLITION PLAN -
SECOND FLOOR**

SHEET NUMBER
G08-013-M1102

ISSUE
00

C:\Users\bingai.liao\Documents\REVIT\2020\122260-TAU&S-13-1026FINCH_D-MR200_bingai.liao.rvt 1/10mm 1/1in

2021-10-19 9:29:29 AM

PROVIDE NEW SHOWER
SYSTEM CONNECT TO
EXISTING SERVICES

PROVIDE NEW ISOLATION
VALVES FOR DCW AND
DHW LINES

PROVIDE 200 DCW & DHW
LINES CONNECT TO
EXISTING MAIN LINES

ASSUMED EXISTING DCW &
DHW MAIN LINES SERVING
WASHROOM, CONTRACTOR
TO VERIFY EXACT LOCATION
AND SIZE ON SITE

PROVIDE NEW LAV WITH 130
DCW & DHW LINES, REER
ARCH DWG FOR EXACT
MOUNTING HEIGHT
REQUIREMENT (TYP. FOR 2)

PROVIDE NEW WC CONNECT
TO EXISTING SERVICES

PROVIDE 200 DCW & 200 DHW LINES
CONNECT TO EXISTING MAIN LINES
TO SERVICE NEW LAVATORIES

ASSUMED EXISTING DCW & DHW
MAIN LINES SERVING WASHROOM,
CONTRACTOR TO VERIFY EXACT
LOCATION AND SIZE ON SITE

PROVIDE NEW ISOLATION
VALVES FOR DCW AND
DHW LINES

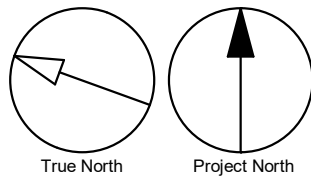
L2H (TYP. FOR 3),
REFER ARCH. DWG
FOR MOUNTING
HEIGHT

EXISTING DRINKING
FOUNTAIN TO REMAIN, RE-
CONNECT DCW SERVICE
LINE IF REQUIRED.

L1H, REFER ARCH. DWG
FOR MOUNTING HEIGHT

PROVIDE NEW URINAL
CONNECT TO EXISTING
SERVICES

GENERAL NOTES:
1. REFER TO SPECIFICATIONS FOR PLUMBING FIXTURE UNIT TYPES.
2. ALL NEW FIXTURES TO BE FITTED WITH ISOLATION VALVES.



CLIENT

CITY OF TORONTO



Corporate Real Estate Management
Project Management Office
Metro Hall Toronto, ON
MSV 3C6

COPYRIGHT

This drawing has been prepared solely for the intended use, thus any reproduction or distribution for any purpose other than authorized by IBI Group is forbidden. Written dimensions shall have precedence over scaled dimensions. Contractors shall verify and be responsible for all dimensions and conditions on the job, and IBI Group shall be informed of any variations from the dimensions and conditions shown on the drawing. Shop drawings shall be submitted to IBI Group for general conformance before proceeding with fabrication.

IBI Group Professional Services (Canada) Inc.
is a member of the IBI Group of companies

ISSUES

No.	DESCRIPTION	DATE
00	ISSUED FOR CONSTRUCTION	2021-10-19

CONSULTANTS

SEAL



PRIME CONSULTANT



IBI GROUP
175 Galaxy Blvd, Unit 100
Toronto, ON M9W 0C9, Canada
tel 416 679 1930 fax 416 675 4620
ibigroup.com

PROJECT TITLE

CITY OF TORONTO
ACCESSIBILITY UPGRADES

PROJECT ADDRESS

FINCH YARD - BLDG D
1026 FINCH AVE W

PROJECT NO:

9119-19- 0612 / IBI 122260

DRAWN BY:

K.DURUKAN

CHECKED BY:

B.LIAO

PROJECT MGR:

F.BOLOURIAN

APPROVED BY:

S. LIU

SHEET TITLE

PLUMBING - GROUND
FLOOR

SHEET NUMBER

G08-013-M2101

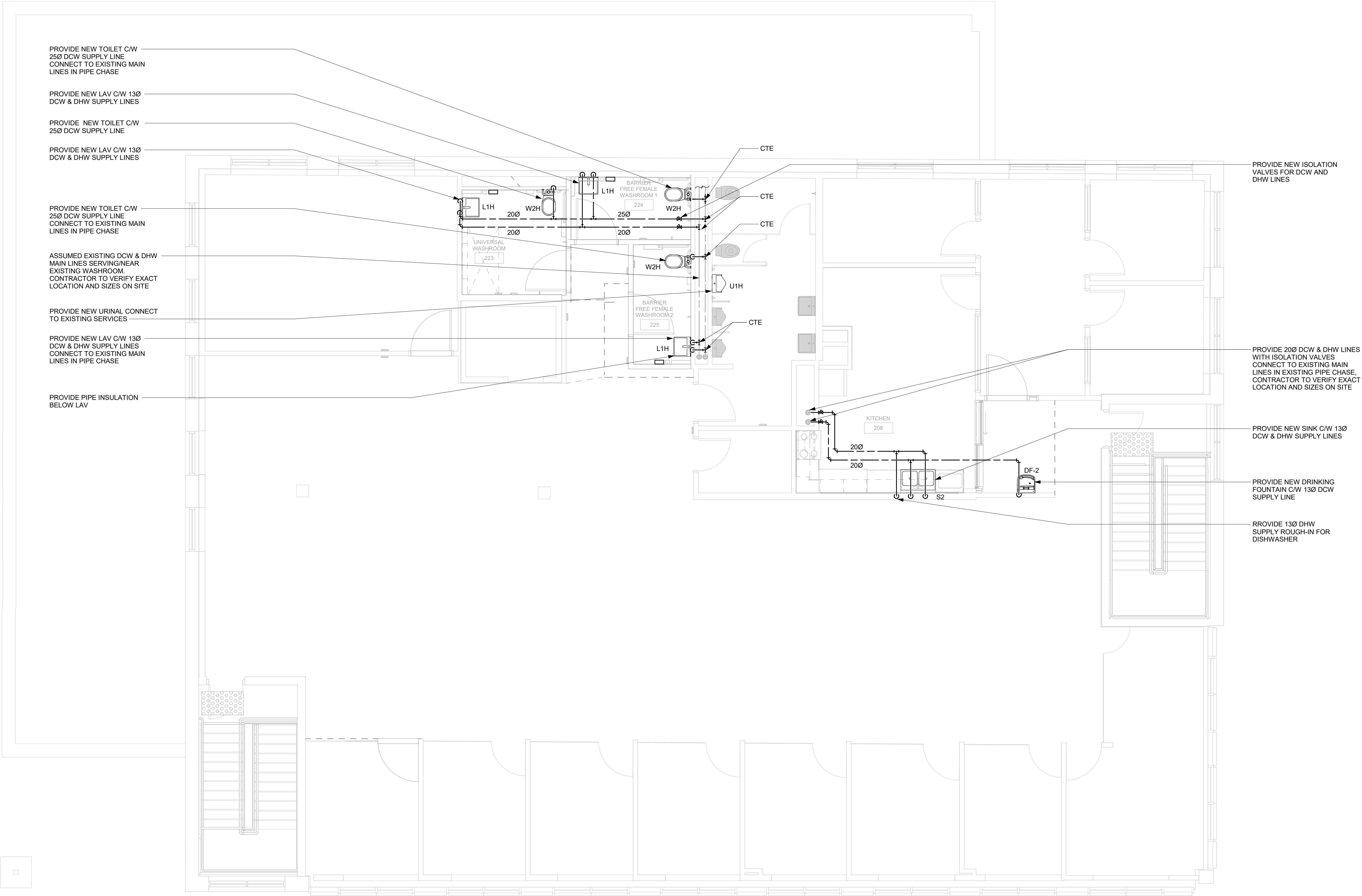
ISSUE

00

C:\Users\bingai.liao\Documents\REVIT\2020\122260-TAU-6-13-1026FINCH_D-M-R00_bingai.liao.rvt

10mm

SCALE CHECK
1 m



PROVIDE NEW TOILET C/W
250 DCW SUPPLY LINE
CONNECT TO EXISTING MAIN
LINES IN PIPE CHASE

PROVIDE NEW LAV C/W 130
DCW & DHW SUPPLY LINES

PROVIDE NEW TOILET C/W
250 DCW SUPPLY LINE

PROVIDE NEW LAV C/W 130
DCW & DHW SUPPLY LINES

PROVIDE NEW TOILET C/W
250 DCW SUPPLY LINE
CONNECT TO EXISTING MAIN
LINES IN PIPE CHASE

ASSUMED EXISTING DCW & DHW
MAIN LINES SERVING/NEAR
EXISTING WASHROOM.
CONTRACTOR TO VERIFY EXACT
LOCATION AND SIZES ON SITE

PROVIDE NEW URINAL CONNECT
TO EXISTING SERVICES

PROVIDE NEW LAV C/W 130
DCW & DHW SUPPLY LINES
CONNECT TO EXISTING MAIN
LINES IN PIPE CHASE

PROVIDE PIPE INSULATION
BELOW LAV

PROVIDE NEW ISOLATION
VALVES FOR DCW AND
DHW LINES

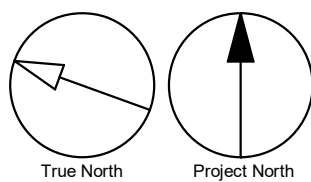
PROVIDE 200 DCW & DHW LINES
WITH ISOLATION VALVES
CONNECT TO EXISTING MAIN
LINES IN EXISTING PIPE CHASE.
CONTRACTOR TO VERIFY EXACT
LOCATION AND SIZES ON SITE

PROVIDE NEW SINK C/W 130
DCW & DHW SUPPLY LINES

PROVIDE NEW DRINKING
FOUNTAIN C/W 130 DCW
SUPPLY LINE

RROVIDE 130 DHW
SUPPLY ROUGH-IN FOR
DISHWASHER

GENERAL NOTES:
1. REFER TO SPECIFICATIONS FOR PLUMBING FIXTURE UNIT TYPES.
2. ALL NEW FIXTURES TO BE FITTED WITH ISOLATION VALVES.



CLIENT
CITY OF TORONTO

Corporate Real Estate Management
Project Management Office
Metro Hall Toronto, ON
MSV 3C6

COPYRIGHT
This drawing has been prepared solely for the intended use, thus any reproduction or distribution for any purpose other than authorized by IBI Group is forbidden. Written dimensions shall have precedence over scaled dimensions. Contractors shall verify and be responsible for all dimensions and conditions on the job, and IBI Group shall be informed of any variations from the dimensions and conditions shown on the drawing. Shop drawings shall be submitted to IBI Group for general conformance before proceeding with fabrication.

IBI Group Professional Services (Canada) Inc.
is a member of the IBI Group of companies

ISSUES		
No.	DESCRIPTION	DATE
00	ISSUED FOR CONSTRUCTION	2021-10-19

CONSULTANTS

SEAL



PRIME CONSULTANT



PROJECT TITLE
**CITY OF TORONTO
ACCESSIBILITY UPGRADES**

PROJECT ADDRESS
**FINCH YARD - BLDG D
1026 FINCH AVE W**

PROJECT NO:
9119-19- 0612 / IBI 122260

DRAWN BY:
K.DURUKAN

CHECKED BY:
B.LIAO

PROJECT MGR:
F.BOLOURIAN

APPROVED BY:
S. LIU

SHEET TITLE
**PLUMBING - SECOND
FLOOR**

SHEET NUMBER
G08-013-M2102

ISSUE
00

2021-10-19 9:29:29 AM

Scale 1:50
0 1 2.5 5 m

C:\Users\bingai.liao\Documents\REV\2020\122260-TAU-6-13-1026FINCH_D-MAR20_bingai.liao.rvt 10mm 1 m

2021-10-19 9:29:30 AM



EXISTING SHOWER DRAIN
TO REMAIN (TYP. FOR ALL)

PROVIDE 800 SAN. LINE
SERVING LAVATORIES AND
CONNECT TO EXISTING
UNDERGROUND MAIN LINE,
CONTRACTOR TO VERIFY
EXACT LOCATION, SIZE AND
INVERT ON SITE

PROVIDE NEW TOILET
CONNECT TO EXISTING
SERVICES, MODIFY
EXISTING SAN LINE IF
REQUIRED

PROVIDE 1000 SAN. LINE SERVING LAVATORIES AND
CONNECT TO EXISTING UNDERGROUND MAIN LINE,
CONTRACTOR TO VERIFY EXACT LOCATION, SIZE AND
INVERT ON SITE

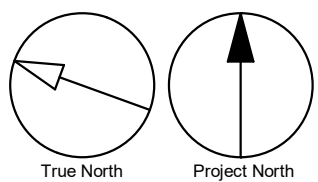
PROVIDE CLEANOUT PLUG

CONTRACTOR TO VERIFY EXISNG DRINKNG FOUNTAIN
SAN. LAYOUT, RE-CONNECT TO LAVATORY SAN. LINE IF
REQUIRED

REFER ARCH. DWG.
FOR REQUIRED
MOUTNING HEIGHTS

PROVIDE NEW URINAL
CONNECT TO
EXISTING SERVICES,
MODIFY EXISTING SAN
LINE IF REQUIRED

- GENERAL NOTES:
1. REFER TO SPECIFICATIONS FOR PLUMBING FIXTURE UNIT TYPES.
 2. PROVIDE SANITARY VENT FOR EACH NEW PLUMBING FIXTURE AND CONNECT TO EXISTING SANITARY VENT MAIN.
 3. PROVIDE P-TRAP FOR EACH PLUMBING FIXTURE AS PER OBC.
 4. ALL NEW FLOOR DRAINS SHALL BE C/W P-TRAP AND PRIMER.
 5. PROVIDE FIRE STOP FOR ALL PIPE PENETRATIONS THROUGH FIRE SEPERATIONS.
 6. ALL UNDERGROUND SANITARY PIPING SHALL BE MINIMUM 75mm DIA UNLESS OTHERWISE NOTED.



CLIENT

CITY OF TORONTO



Corporate Real Estate Management
Project Management Office
Metro Hall Toronto, ON
M5V 3C6

COPYRIGHT

This drawing has been prepared solely for the intended use, thus any reproduction or distribution for any purpose other than authorized by IBI Group is forbidden. Written dimensions shall have precedence over scaled dimensions. Contractors shall verify and be responsible for all dimensions and conditions on the job, and IBI Group shall be informed of any variations from the dimensions and conditions shown on the drawing. Shop drawings shall be submitted to IBI Group for general conformance before proceeding with fabrication.

IBI Group Professional Services (Canada) Inc.
is a member of the IBI Group of companies

ISSUES

No.	DESCRIPTION	DATE
00	ISSUED FOR CONSTRUCTION	2021-10-19

CONSULTANTS

SEAL



PRIME CONSULTANT



IBI GROUP
175 Galaxy Blvd, Unit 100
Toronto, ON M9W 0C9, Canada
tel 416 679 1930 fax 416 675 4620
ibigroup.com

PROJECT TITLE

CITY OF TORONTO
ACCESSIBILITY UPGRADES

PROJECT ADDRESS

FINCH YARD - BLDG D
1026 FINCH AVE W

PROJECT NO:

9119-19- 0612 / IBI 122260

DRAWN BY:

K.DURUKAN

CHECKED BY:

B.LIAO

PROJECT MGR:

F.BOLOURIAN

APPROVED BY:

S. LIU

SHEET TITLE

DRAINAGE - GROUND
FLOOR

SHEET NUMBER

G08-013-M3101

ISSUE

00

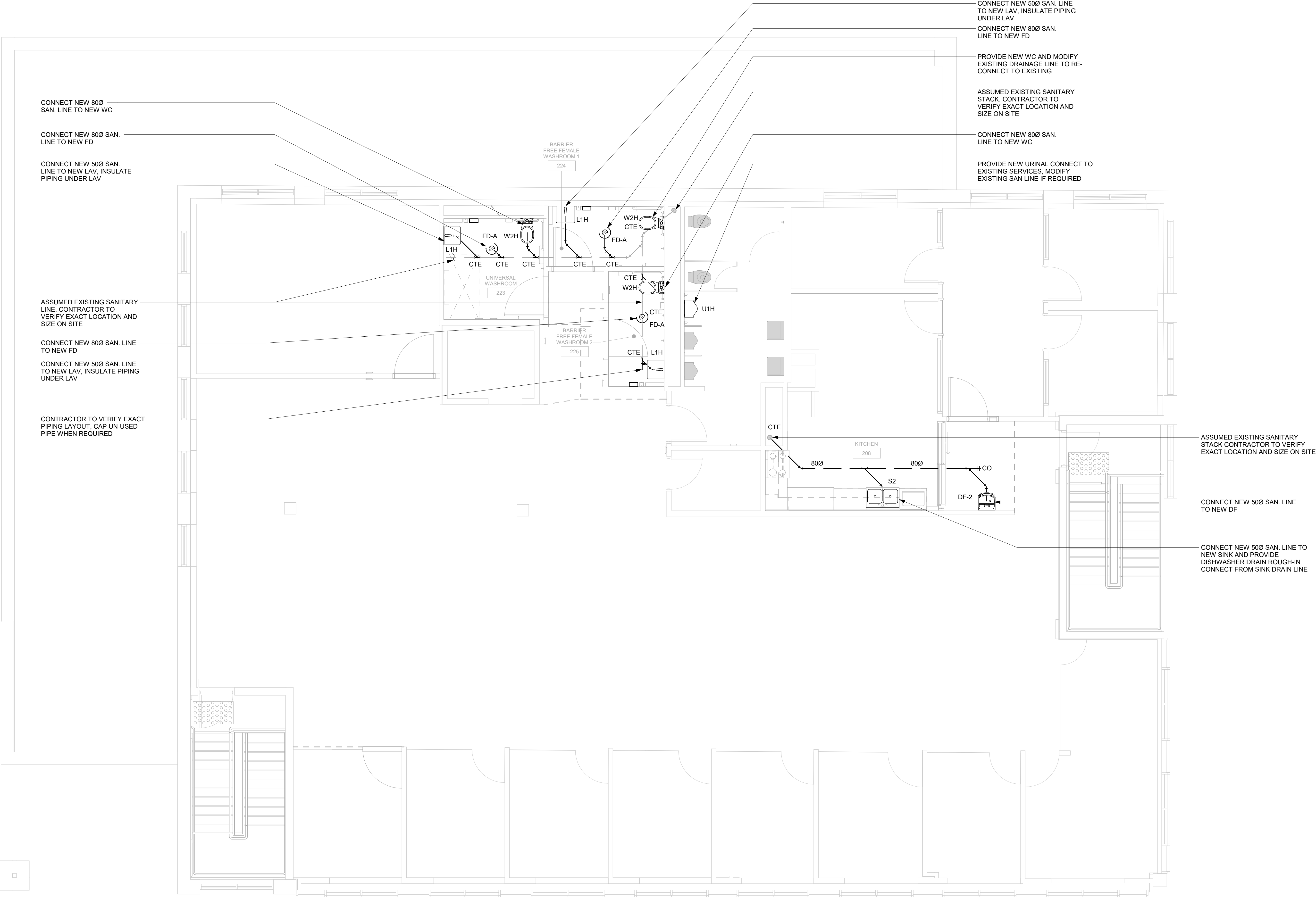
C:\Users\bingai.liao\Documents\REVIT\2020\122260-TAU-6-13-1026FINCH_D-MAR20_bingai.liao.rvt

10mm

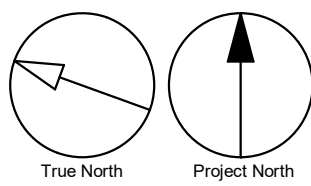
SCALE CHECK
1 in

2021-10-19 9:29:31 AM

Scale 1:50



- GENERAL NOTES:
1. REFER TO SPECIFICATIONS FOR PLUMBING FIXTURE UNIT TYPES.
 2. PROVIDE SANITARY VENT FOR EACH NEW PLUMBING FIXTURE AND CONNECT TO EXISTING SANITARY VENT MAIN.
 3. PROVIDE P-TRAP FOR EACH PLUMBING FIXTURE AS PER OBC.
 4. ALL NEW FLOOR DRAINS SHALL BE C/W P-TRAP AND PRIMER.
 5. PROVIDE FIRE STOP FOR ALL PIPE PENETRATIONS THROUGH FIRE SEPERATIONS.
 6. ALL UNDERGROUND SANITARY PIPING SHALL BE MINIMUM 75mm DIA UNLESS OTHERWISE NOTED.



CLIENT

CITY OF TORONTO


Corporate Real Estate Management
Project Management Office
Metro Hall Toronto, ON
MSV 3C6

COPYRIGHT
This drawing has been prepared solely for the intended use, thus any reproduction or distribution for any purpose other than authorized by IBI Group is forbidden. Written dimensions shall have precedence over scaled dimensions. Contractors shall verify and be responsible for all dimensions and conditions on the job, and IBI Group shall be informed of any variations from the dimensions and conditions shown on the drawing. Shop drawings shall be submitted to IBI Group for general conformance before proceeding with fabrication.

IBI Group Professional Services (Canada) Inc.
is a member of the IBI Group of companies

ISSUES		
No.	DESCRIPTION	DATE
00	ISSUED FOR CONSTRUCTION	2021-10-19

CONSULTANTS

SEAL



PRIME CONSULTANT



PROJECT TITLE
**CITY OF TORONTO
ACCESSIBILITY UPGRADES**

PROJECT ADDRESS
**FINCH YARD - BLDG D
1026 FINCH AVE W**

PROJECT NO:
9119-19- 0612 / IBI 122260

DRAWN BY:
K.DURUKAN

CHECKED BY:
B.LIAO

PROJECT MGR:
F.BOLOURIAN

APPROVED BY:
S. LIU

SHEET TITLE
**DRAINAGE - SECOND
FLOOR**

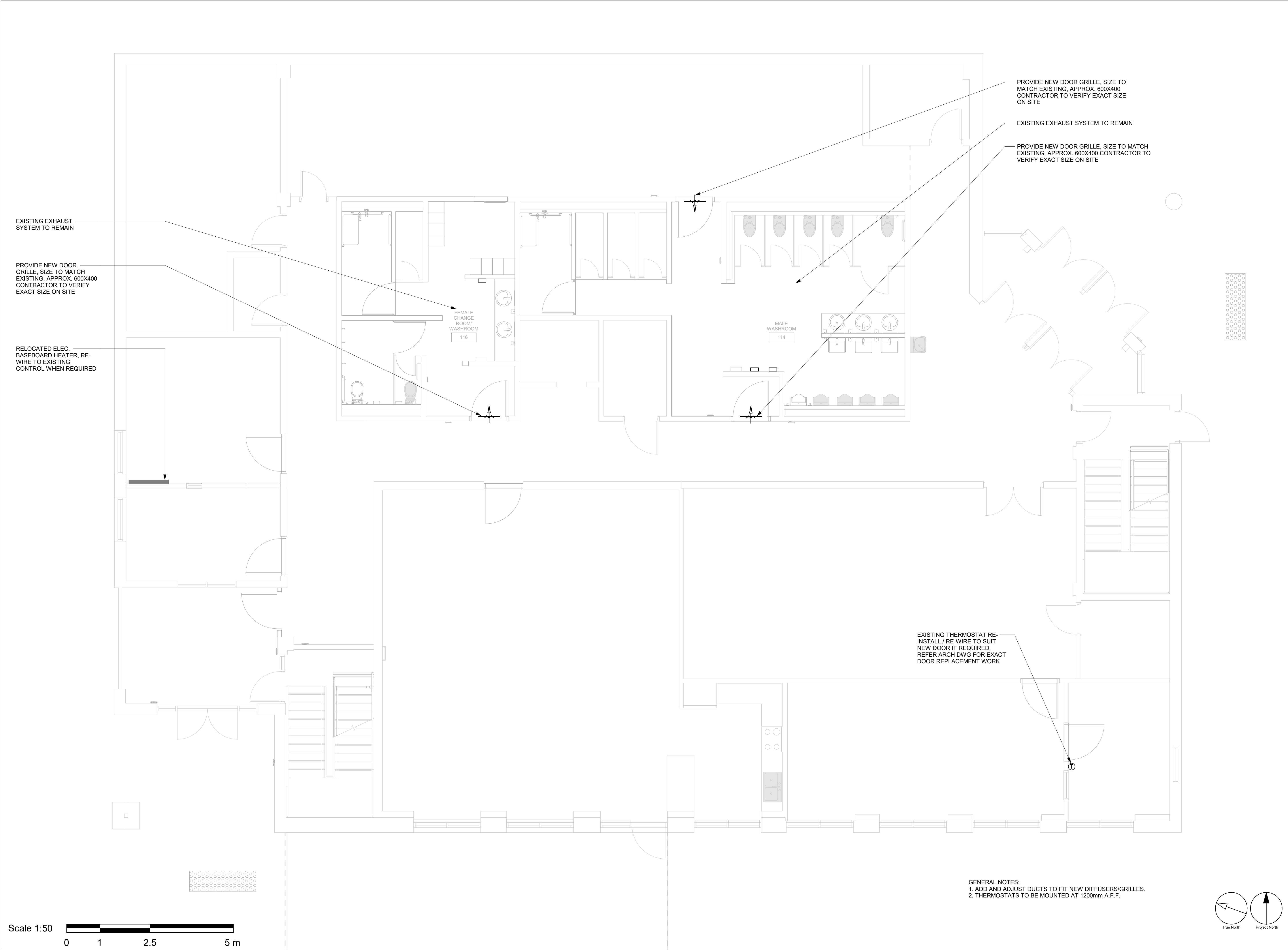
SHEET NUMBER
G08-013-M3102

ISSUE
00

C:\Users\bingai.liao\Documents\REVIT\2020\122260-TAU-6-13-1026FINCH_D-MAR20_bingai.liao.rvt

10mm

SCALE CHECK
1 in



CLIENT
CITY OF TORONTO

Corporate Real Estate Management
Project Management Office
Metro Hall Toronto, ON
MSV 3C6

COPYRIGHT
This drawing has been prepared solely for the intended use, thus any reproduction or distribution for any purpose other than authorized by IBI Group is forbidden. Written dimensions shall have precedence over scaled dimensions. Contractors shall verify and be responsible for all dimensions and conditions on the job, and IBI Group shall be informed of any variations from the dimensions and conditions shown on the drawing. Shop drawings shall be submitted to IBI Group for general conformance before proceeding with fabrication.

IBI Group Professional Services (Canada) Inc.
is a member of the IBI Group of companies

ISSUES		
No.	DESCRIPTION	DATE
00	ISSUED FOR CONSTRUCTION	2021-10-19

CONSULTANTS



PRIME CONSULTANT

IBI GROUP
175 Galaxy Blvd, Unit 100
Toronto, ON M9W 0C9, Canada
tel 416 679 1930 fax 416 675 4620
ibigroup.com

PROJECT TITLE
**CITY OF TORONTO
ACCESSIBILITY UPGRADES**

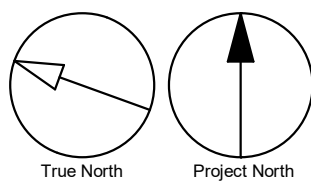
PROJECT ADDRESS
**FINCH YARD - BLDG D
1026 FINCH AVE W**

PROJECT NO: 9119-19- 0612 / IBI 122260	
DRAWN BY: K.DURUKAN	CHECKED BY: B.LIAO
PROJECT MGR: F.BOLOURIAN	APPROVED BY: S. LIU

SHEET TITLE
HVAC - GROUND FLOOR

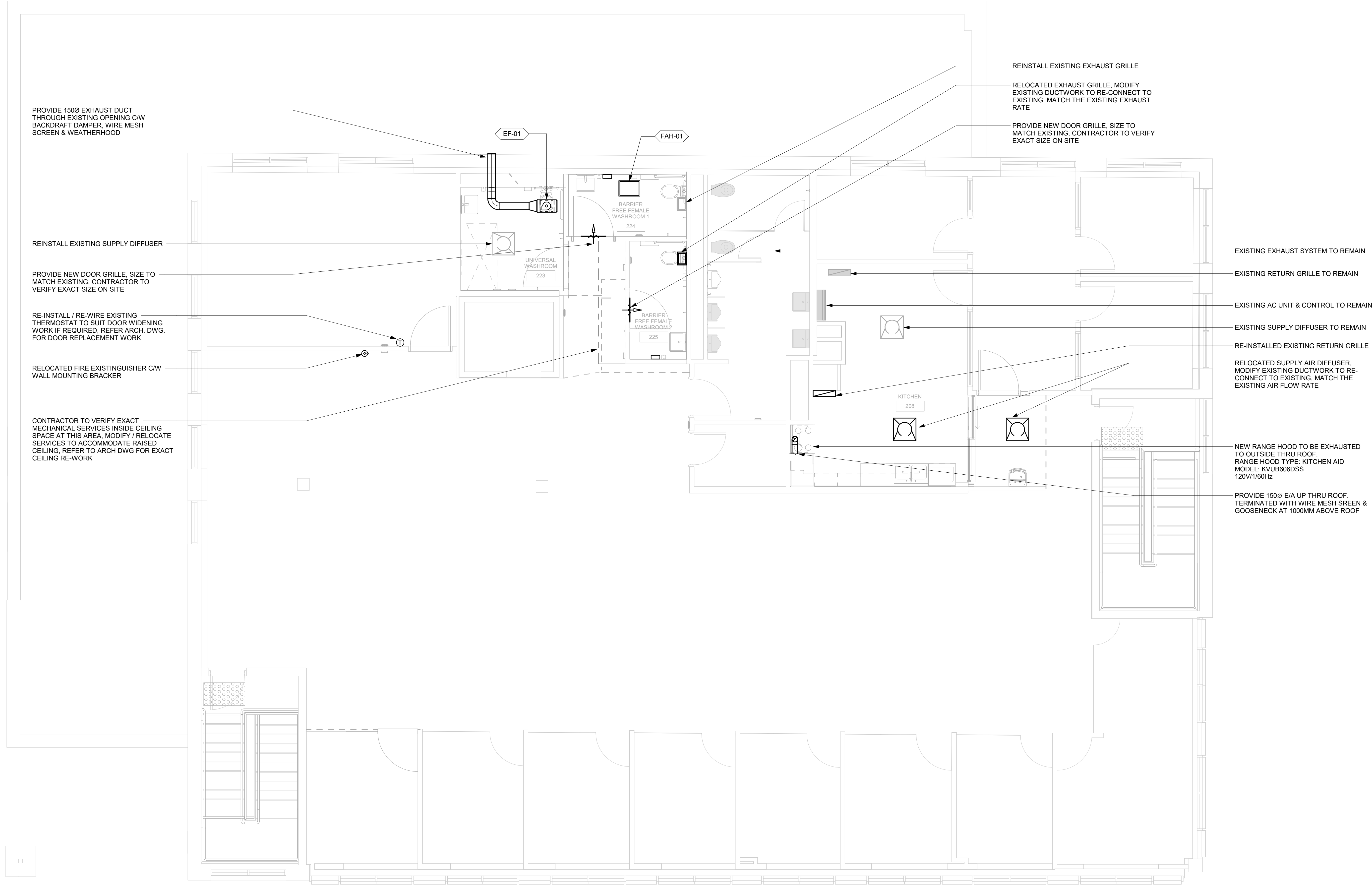
SHEET NUMBER G08-013-M5101	ISSUE 00
--------------------------------------	--------------------

2021-10-19 9:29:32 AM

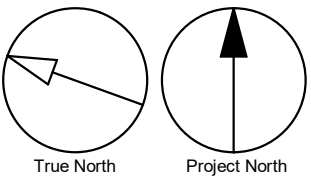


C:\Users\bingai.liao\Documents\REV\2020\122260-TAU-6-13-1026FINCH_D-MAR20_bingai.liao.rvt 10mm 1 m

2021-10-19 9:29:32 AM




GENERAL NOTES:
1. ADD AND ADJUST DUCTS TO FIT NEW DIFFUSERS/GRILLES.
2. THERMOSTATS TO BE MOUNTED AT 1200mm A.F.F.



CLIENT

CITY OF TORONTO



Corporate Real Estate Management
Project Management Office
Metro Hall Toronto, ON
MSV 3C6

COPYRIGHT

This drawing has been prepared solely for the intended use, thus any reproduction or distribution for any purpose other than authorized by IBI Group is forbidden. Written dimensions shall have precedence over scaled dimensions. Contractors shall verify and be responsible for all dimensions and conditions on the job, and IBI Group shall be informed of any variations from the dimensions and conditions shown on the drawing. Shop drawings shall be submitted to IBI Group for general conformance before proceeding with fabrication.


IBI Group Professional Services (Canada) Inc.
is a member of the IBI Group of companies

ISSUES


No.	DESCRIPTION	DATE
00	ISSUED FOR CONSTRUCTION	2021-10-19

CONSULTANTS

SEAL



PRIME CONSULTANT



IBI GROUP

175 Galaxy Blvd, Unit 100
Toronto, ON M9W 0C9, Canada
tel 416 679 1930 fax 416 675 4620
ibigroup.com

PROJECT TITLE

CITY OF TORONTO
ACCESSIBILITY UPGRADES

PROJECT ADDRESS

FINCH YARD - BLDG D
1026 FINCH AVE W

PROJECT NO:
9119-19- 0612 / IBI 122260

DRAWN BY:
K.DURUKAN

CHECKED BY:
B.LIAO

PROJECT MGR:
F.BOLOURIAN

APPROVED BY:
S. LIU

SHEET TITLE

HVAC - SECOND FLOOR

SHEET NUMBER

G08-013-M5102

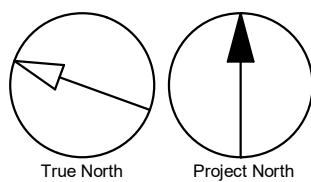
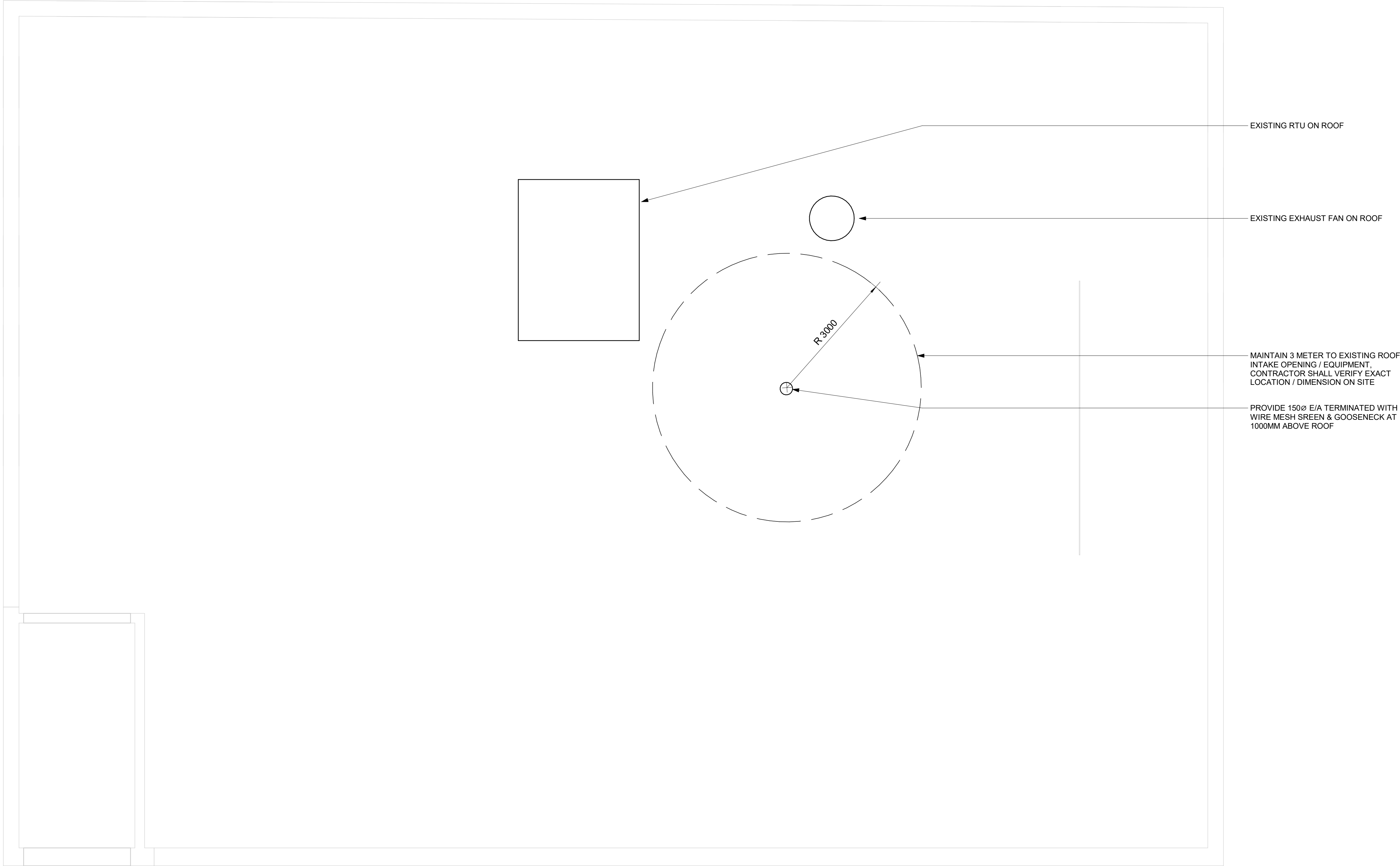
ISSUE

00

C:\Users\bingai.liao\Documents\REVIT\2020\122260-TAU-6-13-1026FINCH_D-MAR20_bingai.liao.rvt 10mm 1 m

2021-10-19 9:29:32 AM

Scale 1:50



CLIENT

CITY OF TORONTO


Corporate Real Estate Management
Project Management Office
Metro Hall Toronto, ON
MSV 3C6

COPYRIGHT
This drawing has been prepared solely for the intended use. Thus any reproduction or distribution for any purpose other than authorized by IBI Group is forbidden. Written dimensions shall have precedence over scaled dimensions. Contractors shall verify and be responsible for all dimensions and conditions on the job, and IBI Group shall be informed of any variations from the dimensions and conditions shown on the drawing. Shop drawings shall be submitted to IBI Group for general conformance before proceeding with fabrication.

IBI Group Professional Services (Canada) Inc.
is a member of the IBI Group of companies

ISSUES		
No.	DESCRIPTION	DATE
00	ISSUED FOR CONSTRUCTION	2021-10-19

CONSULTANTS

SEAL



PRIME CONSULTANT

 **IBI GROUP**
175 Galaxy Blvd, Unit 100
Toronto, ON M9W 0C9, Canada
tel 416 679 1930 fax 416 675 4620
ibigroup.com

PROJECT TITLE
**CITY OF TORONTO
ACCESSIBILITY UPGRADES**

PROJECT ADDRESS
**FINCH YARD - BLDG D
1026 FINCH AVE W**

PROJECT NO:
9119-19- 0612 / IBI 122260

DRAWN BY:
K.DURUKAN

CHECKED BY:
B.LIAO

PROJECT MGR:
F.BOLOURIAN

APPROVED BY:
S.LIU

SHEET TITLE
HVAC - ROOF

SHEET NUMBER
G08-013-M5103

ISSUE
00

C:\Users\bingai.liao\Documents\REV\T2020\122260-TAU&-13-1026FINCH_D-MAR20_bingai.liao.rvt

10mm

SCALE CHECK
1 m