

LEGEND	
	FIXTURE TYPE "A1"
	15A, 125V SINGLE POLE SWITCH, S <sub>1</sub> (TWO POLE), S <sub>3</sub> (3-WAY), S <sub>4</sub> (4-WAY), S <sub>5</sub> (KEY OPERATED), S <sub>6</sub> (DIMMER), S <sub>7</sub> (C/W PILOT LIGHT), S <sub>8V</sub> (LOW VOLTAGE), S <sub>9</sub> (TIMER), S <sub>10</sub> (OCCUPANCY SENSOR SWITCH), S <sub>11</sub> (GANGED SWITCHES)
	DIGITAL ONE BUTTON LIGHT SWITCH, WATT STOPPER LMSW-101
	DIGITAL TWO BUTTONS LIGHT SWITCH, WATT STOPPER LMSW-102
	DIGITAL THREE BUTTONS LIGHT SWITCH, WATT STOPPER LMSW-103
	DIGITAL FOUR BUTTONS LIGHT SWITCH, WATT STOPPER LMSW-104
	DIGITAL DIMMING WALL SWITCH LIGHT, WATT STOPPER LMDM-101.
	ELECTRICAL PANEL
	NON-FUSED DISCONNECT SWITCH
	WEATHERPROOF DISCONNECT SWITCH
	TELEVISION OUTLET C/W 21MM CONDUIT.
	ANALOG TELEPHONE OUTLET C/W 21MM CONDUIT. (RED PHONE) TO BE INSTALLED AT 1200MM A.F.F.
	INTERCOM UNIT OUTLET C/W 21MM CONDUIT.
	TELEPHONE OUTLET MOUNTED AT 1500MM A.F.F C/W 21MM CONDUIT.
	DATA OUTLET C/W 21MM CONDUIT.
	WIFI OUTLET C/W 21MM CONDUIT. AT CEILING LEVEL
	MEDIX SAFE C/W 50MM CONDUIT.
	TELEPHONE/DATA OUTLET C/W 21MM CONDUIT.
	LOCAL SOUND SYSTEM SPEAKER C/W 16MM CONDUIT TO LOCAL SOUND SYSTEM.
	MICROPHONE OUTLET C/W 16MM CONDUIT.
	DOOR OPERATOR
	DOOR BELL BUZZER
	DOOR BELL PUSH BUTTON
	FIRE ALARM HEAT DETECTOR, CEILING MOUNTED
	FIRE ALARM HEAT DETECTOR, CEILING MOUNTED, FIXED TEMPERATURE
	FLOW SWITCH
	ELECTRICALLY SUPERVISED VALVE
	FIRE ALARM PULLSTATION
	FIRE ALARM STROBE
	FIRE ALARM COMBINATION HORN AND STROBE
	SURFACE OR RECESS MOUNTED LIGHTING FIXTURE. LETTER DENOTES TYPE
	LIGHTING FIXTURE ON NIGHT LIGHT CIRCUIT
	SURFACE OR RECESS MOUNTED LIGHTING FIXTURE. LETTER DENOTES TYPE
	DIRECT HARDWARE CONNECTION
	JUNCTION BOX
	SURFACE MOUNTED STRIP FLUOUESCENT LIGHTING FIXTURE. LETTER DENOTES TYPE
	OCCUPANCY SENSOR
	EMERGENCY LIGHTING FIXTURE
	EXIT SIGN
	BATTERY
	EMERGENCY LIGHTING FIXTURE AND BATTERY
	EMERGENCY LIGHTING FIXTURE, BATTERY AND EXIT SIGN
	SECURITY MOTION SENSOR
	TRANSFORMER
	ABOVE COUNTER
	ABOVE FINISHED FLOOR
	FIRE ALARM ANNUNCIATOR
	BASEBOARD HEATER
	CIRCUIT BREAKER
	EXISTING TO BE RELOCATED
	EXISTING TO REMAIN
	FORCED-AIR HEATER
	EQUIPMENT SO NOTED TO BE SUPPLIED WITH GROUND FAULT CIRCUIT INTERRUPT
	JUNCTION BOX
	RELAY WITH AUXILIARY CONTACTS
	DISH WASHER
	TRANSFORMER
	UNIT HEATER
	WALL MOUNT - VERIFY HEIGHT
	EQUIPMENT SO NOTED TO BE SUPPLIED WITH THE MANUFACTURER'S WEATHER-PROOF OPTION(S)
	MOTORIZED DAMPER
	SPEAKER
	MOTOR CONNECTION (SINGLE OR THREE PHASE)

	FLOOR MOUNTED DATA/TEL OUTLET
	OUTLET FOR SECURITY DOOR STRIKE
	OUTLET FOR SECURITY CONCEALED DOOR CONTACT
	OVER HEAD DOOR CONTACT
	ARMING BUTTON
	OUTLET FOR SECURITY HID CARD ACCESS READER
	OUTLET FOR HONEYWELL KEY PAD
	OUTLET FOR SECURITY GLASS BREAK SENSOR
	OUTLET FOR SECURITY MOTION SENSOR
	OUTLET FOR ASSISTANCE REQUIRE BUTTON
	OUTLET FOR REQUEST FOR EXIT
	EMERGENCY RESPONSE SYSTEM
	OUTLET FOR SECURITY SIREN/ALARM HORN
	OUTLET FOR CLOSED CIRCUIT TV SECURITY CAMERA
	OUTLET FOR A/V MICROPHONE.
	EMERGENCY PUSH BUTTON FOR GAS SOLENOID VALVE
	FIRE ALARM SMOKE DETECTOR, CEILING MOUNTED
	120V, COMBINATION SMOKE & CO ALARM UNIT C/W STROBE LIGHT & BATTERY BACK UP. EDWARDS # 900-0119 OR KIDDE, SIMPLEX
	BELL DEMARC
	CEILING MOUNT DUAL TECH OCCUPANCY SENSOR, WATT STOPPER LMDC-100.
	CEILING MOUNT PIR OCCUPANCY SENSOR, WATT STOPPER LMPC-100.
	CEILING MOUNT ULTRA SONIC OCCUPANCY SENSOR, WATT STOPPER LMUC-100.
	WALL CORNER MOUNT DUAL TECH OCCUPANCY SENSOR, WATT STOPPER LMDX-100.
	WALL MOUNT DUAL TECH OCCUPANCY SENSOR, WATT STOPPER LMDX-102.
	WALL MOUNT PIR OCCUPANCY SENSOR, WATT STOPPER PW-100
	DIGITAL ROOM CONTROLLER WITH SINGLE RELAY, WATT STOPPER LMRC-101
	DIGITAL ROOM CONTROLLER WITH TWO RELAYS, WATT STOPPER LMRC-102
	DIGITAL ON/OFF/0-10V DIMMING ROOM CONTROLLERS WITH ONE RELAY, WATT STOPPER LMRC-211
	DIGITAL ON/OFF/0-10V DIMMING ROOM CONTROLLERS WITH TWO RELAYS, WATT STOPPER LMRC-212
	DIGITAL ON/OFF/0-10V DIMMING ROOM CONTROLLERS WITH THREE RELAYS, WATT STOPPER LMRC-213
	HAND DRYER
	15A, 120V DUPLEX RECEPTACLE.
	15A, 120V HALF SWITCHED DUPLEX RECEPTACLE.
	15A, 120V DUPLEX RECEPTACLE MOUNTED ABOVE COUNTER.
	20A, 120V T-SLOT DUPLEX RECEPTACLE.
	15A, 120V ISOLATED GROUND DUPLEX RECEPTACLE WITH SEPARATE NEUTRAL & GROUND WIRE PER CIRCUIT
	15A, 120V ISOLATED GROUND DUPLEX RECEPTACLE WITH SEPARATE NEUTRAL & GROUND WIRE PER CIRCUIT MOUNTED ABOVE COUNTER.
	15A, 120V DUPLEX GROUND FAULT INTERRUPTER RECEPTACLE.
	15A, 120V DUPLEX GROUND FAULT INTERRUPTER RECEPTACLE MOUNTED ABOVE COUNTER OR AT HEIGHT.
	20A CEILING MOUNT EMS SHORE CORD ASSEMBLES.
	15A, 120V DUPLEX RECEPTACLE WITH USB CHARGER (SG: SINGLE GANG, DG: DOUBLE GANG, QG: QUAD GANG)
	15A, 120V SINGLE RECEPTACLE.
	50A, 250V 3 WIRE RANGE RECEPTACLE.
	30A, 208V, 1Ø SINGLE RECEPTACLE.
	20A, 120V SINGLE RECEPTACLE.
	20A, 208V, 3Ø SINGLE RECEPTACLE.
	15A, 208V, 1Ø SINGLE RECEPTACLE.
	15A, 208V, 3Ø SINGLE RECEPTACLE.
	40A, 208V, 3Ø SINGLE RECEPTACLE.
	TELEVISION OUTLET C/W 21MM CONDUIT.

ELECTRICAL DRAWING LIST

- E1.0 ELECTRICAL LEAD SHEET
- E2.0 ELECTRICAL SITE PLAN
- E3.0 POWER FLOOR PLAN
- E4.0 SECURITY SYSTEM FLOOR PLAN
- E5.0 LIGHTING FLOOR PLAN
- E6.0 FIRE ALARM SYSTEM FLOOR PLAN
- E7.0 SINGLE LINE DIAGRAM & PANEL SCHEDULES
- E8.0 ELECTRICAL DETAILS
- E9.0 LIGHTING CONTROL DETAILS
- E10.0 TYPICAL SECURITY DOOR DETAILS

LIGHTING FIXTURE SCHEDULE							
TYPE	DESCRIPTION	MAKE/MODEL	VOLT	LAMP			REMARKS
				WATT	TYPE	COL.	
F1	GE 2X4 TROFFER WITH HIGH OPTICAL GRADE LENS	GE MODEL BR-24-0-A3-A-V-XX OR APPROVED EQUIVALENT BY ALTERNATE: PEERLESS, METALUMEN, OR HUBBELL.	120-277	49	LED	4000	MEDICAL STORAGE, I.T. ROOM, LOCKER ROOM, WRITE-UP ROOM, LOUNGE ROOM
F6	4' UNDERCABINET GM LIGHTING LTAB DIMMABLE HIGH OUTPUT LED LINEAR LIGHTBAR	2X LTAB-N-24 W/ LTCWP-12 CONNECTOR AND LTH-16 POWER SUPPLY OR APPROVED EQUIVALENT BY COLUMBIA AND SENSO LIGHT.	120	10.4	LED	3500	KITCHEN
F7	8' SUSPENDED LED FIXTURE	GE MODEL ALR1-0-1-H-47-1-8-S-N-V-ST-XX-N-W ALTERNATE: PEERLESS, COLUMBIA OR HUBBELL.	120-277	74	LED	4000	APPARATUS BAY
F7A	4' SUSPENDED LED FIXTURE	GE MODEL ALR1-0-1-H-47-1-4-S-N-V-ST-XX-N-W ALTERNATE: PEERLESS, COLUMBIA OR HUBBELL.	120-277	38	LED	4000	APPARATUS BAY
T1	SUSPENDED LED FIXTURE	GE MODEL ALR1-0-1-H-47-1-4-S-N-V-ST-XX-N-W ALTERNATE: PEERLESS, COLUMBIA OR HUBBELL.	120-277	38	LED	4000	OXYGEN STORAGE, UTILITY ROOM
CA	4' LED DOWN LIGHT, ALZAK SEMI-DIFFUSE REFLECTOR, WHITE TRIM, 2000 LUMEN, WET RATED	GE DI-4R-20-940-1V-10 WITH R-DI4R-W-SD OR APPROVED EQUIVALENT BY PEERLESS, PRESCOLTE OR SENSO	120	25	LED	4000	CEILING RECESSED SHOWER AREA
CB	6' LED DOWN LIGHT, ALZAK SEMI-DIFFUSE REFLECTOR, WHITE TRIM, 2000 LUMEN, WET RATED	GE DI-6R-20-940-1V-10 WITH R-DI6R-W-SD OR APPROVED EQUIVALENT BY PEERLESS, PRESCOLTE OR SENSO	120	25	LED	4000	CEILING RECESSED CORRIDOR, WASHROOM
MA	LED FULL CUTOFF WALL PACK, DIE CAST ALUMINUM HOUSING AND DOOR	HUBBELL OUTDOOR SGI-20-4K7-FT-UNV-XX-CS MOUNT AT 12 AFF. FINISH SHOULD BE AS PER ARCHITECT SELECTION ALTERNATE: WILLIAMS, CANTYLE OR THOMAS	120-277	20	LED	4000	WALL MOUNTED EXTERIOR WALL
MB	2', 4', 6', 8' CONTINUOUS DIRECT TRUGROOVE LED LUMINAIRE	PHILLIPS MODEL 3950-L-A-K-Q-S-4-X-1-1 OR APPROVED EQUIVALENT BY ALTERNATE: PEERLESS, METALUMEN, OR HUBBELL.	120	18.7/4FT	LED	4000	CEILING RECESSED
MC	6" LED POT LIGHT, CSA LISTED FOR PROTECTED WET LOCATIONS, 22.6W	COOPER MODEL # FFLD6A-15-DL3 ALTERNATE: PEERLESS, CANLYTE OR GE	120-277	22.6	LED	4000	CEILING RECESSED CANOPY
PA	FULL CUTOFF LIGHTING FIXTURE. LIGHTING STANDARD C/W 3.85M HIGH STEEL TAPPED POLE ON 550MM ABOVE GRADE CONCRETE BASE, POLE & LUMINAIRES (BLACK) FINISH AS PER ARCHITECT SELECTION.	BEACON VIPER MODEL # VPS-48NB-110-3K-T3-UNV-HSS-90 ALTERNATE: GE, CANLYTE & HUBBELL.	120-277	110	LED	3000	POLE MOUNTED PARKING LOT

GENERAL NOTES

- DO NOT SCALE DRAWINGS FOR INSTALLATION PURPOSES. ALL MEASUREMENTS ARE TO BE OBTAINED FROM ARCHITECTURAL PLANS, ELEVATIONS, AND FROM FIELD MEASUREMENTS.
- DIVISION 16 SHALL REFER TO ARCHITECTURAL & MECHANICAL DRAWINGS FOR ALL SCOPE OF WORK OF DIVISION 16 WHICH ARE RELATED TO OTHER TRADES
- ELECTRICAL AND MECHANICAL TRADES SHALL WORK IN CONJUNCTION WITH ONE ANOTHER, SO AS TO AVOID INTERFERENCES AND TO MAINTAIN MINIMUM CLEARANCES BETWEEN DUCTWORK, PIPING, CONDUIT AND LIGHTING FIXTURE.
- REVIEW ARCHITECTURAL DRAWINGS FOR FIRE RATED WALLS, AND CEILINGS AND PROVIDE NECESSARY FIRE STOPPING AS REQUIRED.
- WORK IN CONJUNCTION WITH REFLECTED CEILING PLANS WHEN LOCATING LIGHT FIXTURES.
- WORK IN CONJUNCTION WITH MECHANICAL DIFFUSER LAYOUT WHEN LOCATING SMOKE DETECTORS.
- POWER AND CONTROL WIRING SHALL RISE TO ROOF TOP EQUIPMENT WITHIN CURB OF UNIT, WHEN OTHERWISE APPROVED BY THE CONSULTANT.
- PROVIDE AND INCLUDE FOR ALL NECESSARY ACCESSORIES AND FITTINGS FOR A FULL AND COMPLETE INSTALLATION OF LIGHTING FIXTURES, INCLUDING CEILING TRIMS AND FRAMES TO SUIT CEILING. REFER TO ARCHITECTURAL CEILING SCHEDULE FOR CEILING TYPES.
- LIGHTING BALLASTS AND DIMMERS SHALL BE COMPATIBLE WITH THE LIGHTING SOURCE AND LIGHTING FIXTURES BEING CONTROLLED AND INSTALLED.
- PROVIDE EACH ITEM MENTIONED OR INDICATED OF QUALITY AND SUBJECT TO QUALIFICATIONS NOTED; PERFORM ACCORDING TO CONDITIONS STATED EACH OPERATIONS STATED. EACH OPERATION PRESCRIBED ; AND PROVIDE THEREFORE ALL LABOR, MATERIAL, EQUIPMENT, INCIDENTALS AND SERVICES REQUIRED TO COMPLETE THE INSTALLATION.
- SCHEDULE AND COORDINATE ALL WORK WITH OTHER TRADES.
- CONTRACTOR SHALL BALANCE CIRCUIT LOADS AS CLOSELY AS POSSIBLE.
- CONTRACTOR SHALL PERFORM VOLTAGE DROP CALCULATIONS FOR ALL BRANCH CIRCUITS OF LIGHTING, POWER AND FEEDERS AND SHALL MAINTAIN VOLTAGE DROP WITHIN PERMISSIBLE LIMITS AS PER OESC REQUIREMENTS AND PROVIDE PROPER WIRE SIZES ACCORDINGLY PRIOR TO COMMENCING ROUGH-IN INSTALLATION. THE VOLTAGE DROP CALCULATIONS SHALL BE BASED ON MAXIMUM CIRCUIT AMPACITY.
- ALL CONDUITS BACKBOXES AND ROUGH-IN FOR LOW VOLTAGE SYSTEMS SHALL BE PROVIDED BY ELECTRICAL CONTRACTOR.
- DIVISION 16 TO PROVIDE CONDUIT & WIRING FOR ALL ELECTRICAL & MECHANICAL EQUIPMENT FOR A COMPLETE OPERATIONAL SYSTEM.
- ELECTRICAL CONTRACTOR IS RESPONSIBLE FOR ALL OF THE COORDINATION WORKS REGARDING HYDRO NEW INCOMING SERVICE. ELECTRICAL CONTRACTOR SHALL COMPLY WITH HYDRO REQUIREMENT AND SHALL PROVIDE ALL NECESSARY MATERIAL & LABOR REQUIRED ACCORDINGLY.
- ELECTRICAL CONTRACTOR IS RESPONSIBLE TO PROVIDE ALL THE ROUGH INS REQUIRED FOR DIVISION 15 SCOPE OF WORK (UNLESS NOTED OTHERWISE) INCLUDING CONDUITS, BACK BOXES, JUNCTION BOXES, PULL WIRES, ETC. ELECTRICAL CONTRACTOR SHALL REFER TO DIVISION 15 DRAWINGS AND SPECS FOR MORE INFORMATION AND SHALL INCLUDE ALL COSTS ASSOCIATED RELATED TO THE ROUGH INS IN HIS TENDER PRICE.
- REFER TO DOOR HARDWARE SCHEDULE FOR ROUGH IN REQUIREMENT AND PROVIDE ALL NECESSARY FOR FULL OPERATIONAL SYSTEM TO COMPLY ACCORDINGLY.
- ELECTRICAL CONTRACTOR SHALL PROVIDE SUPPORTING SYSTEM TO SUPPORT ALL LIGHT FIXTURES ONLY FROM THE JOIST OR STEEL BEAMS ( NOT FROM THE ROOF DECK).
- ALL ELECTRICAL EQUIPMENT THAT IS SUSPENDED SHALL BE SUPPORTED BY A SYSTEM THAT IS CERTIFIED BY THE MANUFACTURER TO CARRY THE LOADS OF THE EQUIPMENT. IF NO SYSTEM IS RECOMMENDED BY THE MANUFACTURER, THE CONTRACTOR SHALL PROVIDE A DESIGN STAMPED BY A P.ENG. THESE ITEMS SHALL INCLUDE BUT NOT LIMITED TO LIGHTING, TRANSFORMER, HEATERS, AND ALL SIMILAR ELECTRICAL EQUIPMENT. INSTALL IN ACCORDANCE WITH MANUFACTURER'S OR P.ENG DESIGN.
- PROVIDE 3/4" EMT CONDUIT FROM EACH VOICE/DATA OUTLET TO THE PLYWOOD BACKBOARD LOCATED IN THE MECH/ELEC ROOM # 109.
- PROVIDE 3/4" EMT CONDUIT FROM PUBLIC ADDRESS SPEAKER TO THE PLYWOOD BACKBOARD LOCATED IN THE MECH/ELEC ROOM # 109.
- PROVIDE STAINLESS STEEL COVER PLATES FOR ALL WIRING DEVICES UNLESS NOTED OTHERWISE.
- COORDINATION & ARC FLASH STUDY SHOP DRAWINGS SHALL BE PROVIDED FOR THE CONSULTANT'S REVIEW PRIOR TO MANUFACTURING OF ELECTRICAL PANELS INCLUDING MAIN SWITCHBOARD & DISTRIBUTION PANELS.
- THROUGHOUT DIVISION 16 ARE LIST OF "ALTERNATE EQUIPMENT" MANUFACTURERS ACCEPTABLE TO CONSULTANT IF THEIR PRODUCT MEETS CHARACTERISTICS OF SPECIFIED DESCRIBED EQUIPMENT/PRODUCTS. IT IS RESPONSIBILITY OF THIS DIVISION TO ENSURE "ALTERNATE EQUIPMENT" COMPLIES WITH THE SPECIFIED DESCRIBED EQUIPMENT/PRODUCTS. ALL ADDITIONAL WORK REQUIRED FOR AND ASSOCIATED WITH ALTERNATE EQUIPMENT SHALL BE PROVIDED WITHOUT CHANGE IN CONTRACT AMOUNT. ONLY MANUFACTURERS LISTED IN THE SPECS WILL BE ACCEPTED FOR THEIR PRODUCT LISTING. REFER TO ELECTRICAL SUPPLEMENTARY BID FORM DOCUMENT 16001 FOR MORE INFORMATION.
- COORDINATE ON SITE WITH THE GENERATOR MANUFACTURER AND OTHER TRADES BEFORE COMMENCEMENT OF THE GENERATOR INSTALLATION WORK AND THEN PROCEED ACCORDINGLY.
- PROVIDE ADDITIONAL ALARM SIGNALS (C/W ALL MATERIAL AND LABOR FOR FULLY OPERATIONAL SYSTEM) AT THE GENERATOR CONTROL PANEL AND THE REMOTE ANNUNCIATOR PANEL TO INCLUDE THE FOLLOWING ALARM SIGNALS:  
-ATS ON BYPASS MODE  
-ATS ON EMERGENCY POWER.

ELECTRIC CABINET UNIT HEATER SCHEDULE

SYMBOL	CAPACITY KW	ELECTRICAL VOLTAGE	REMARK
	3	208/1/60	MODEL # OAC04000 BY OUELLET OR APPROVED EQUIVALENT. UNITS TO COME WITH INTEGRAL THERMOSTAT

ELECTRIC BASEBOARD HEATER SCHEDULE

SYMBOL	CAPACITY KW	ELECTRICAL VOLTAGE	REMARK
	0.75	120/1/60	MODEL # OFM0752 BY OUELLET OR APPROVED EQUIVALENT. UNITS TO COME WITH INTEGRAL THERMOSTAT

THE CONTENTS OF THIS DRAWING AND SPECIFICATIONS REMAIN THE COPYRIGHT PROPERTY OF THOMAS BROWN ARCHITECT INC. AND MUST BE RETURNED UPON COMPLETION OF THE WORK.

ISSUE OR REVISION

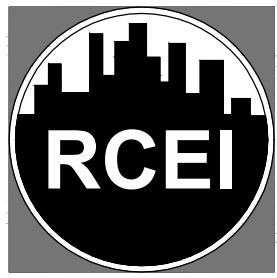
NO.	ISSUED FOR	DATE
1	ISSUED FOR REVIEW	2018-03-14
2	ISSUED FOR 80% REVIEW	2018-10-02
3	ISSUED FOR 90% DESIGN DEVELOPMENT	2018-11-21
4	ISSUED FOR REVIEW	2019-01-03
5	ISSUED FOR BUILDING PERMIT	2019-03-14
6	ISSUED FOR ADDENDUM ME-1	2019-08-20
7	ISSUED FOR CONSTRUCTION	2020-02-24

PROJECT :

YORK REGION PRS

STATION #29

107 GLEN CAMERON ROAD, MARKHAM



REGAL CONSULTING ENGINEERS INC.  
CONSULTING MECHANICAL & ELECTRICAL ENGINEERS  
2359 Royal Windsor Drive, Suite 201, Mississauga, Ontario L5J 4S9  
PHONE: (905)655-2010  
www.regal-rcei.com

CLIENT :



THE CONTRACTOR SHALL VERIFY ALL DIMENSIONS PRIOR TO COMMENCEMENT OF THE WORK. ANY DISCREPANCIES ARE TO BE REPORTED TO THE CONSULTANT.

ARCHITECT :



A 197 SPADINA AVE., SUITE 500, TORONTO, ON  
T 416-364-5710 EXT 101  
W WWW.TBROWNARCH.COM

PROFESSIONAL SEAL

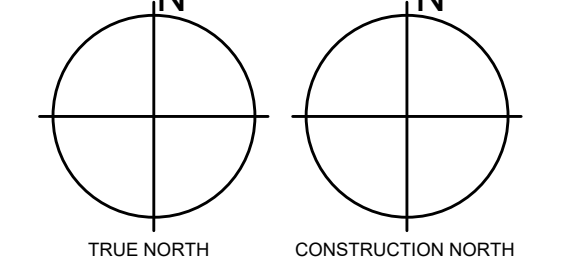
Approval to Proceed

Project Phase

Authorization (signature)

DWG TITLE

ORIENTATION



DATE Jan. 03, 2019

SCALE

DRAWN BY

DWG STATUS :

PERMIT

PROJECT No.

2016-147

DRAWING No.

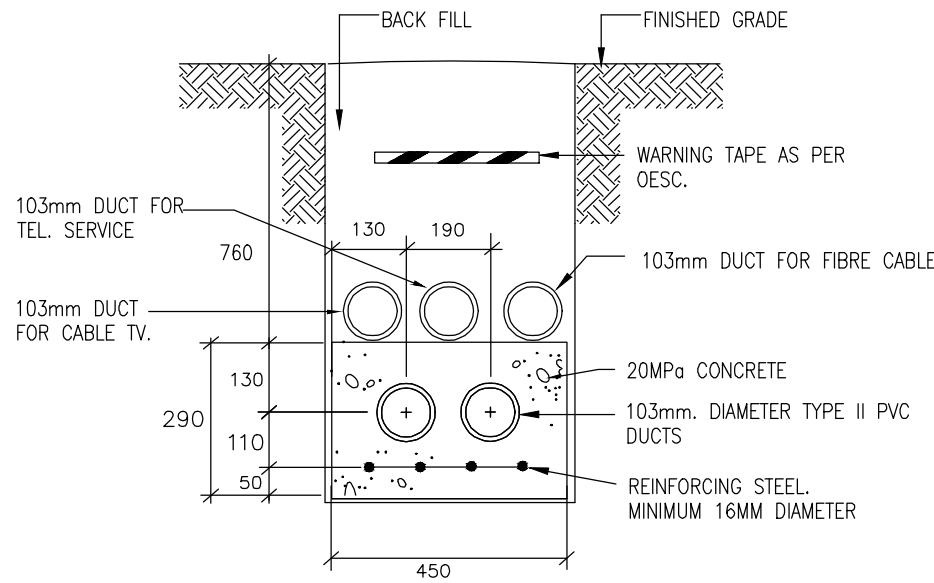
E1.0

REVISION

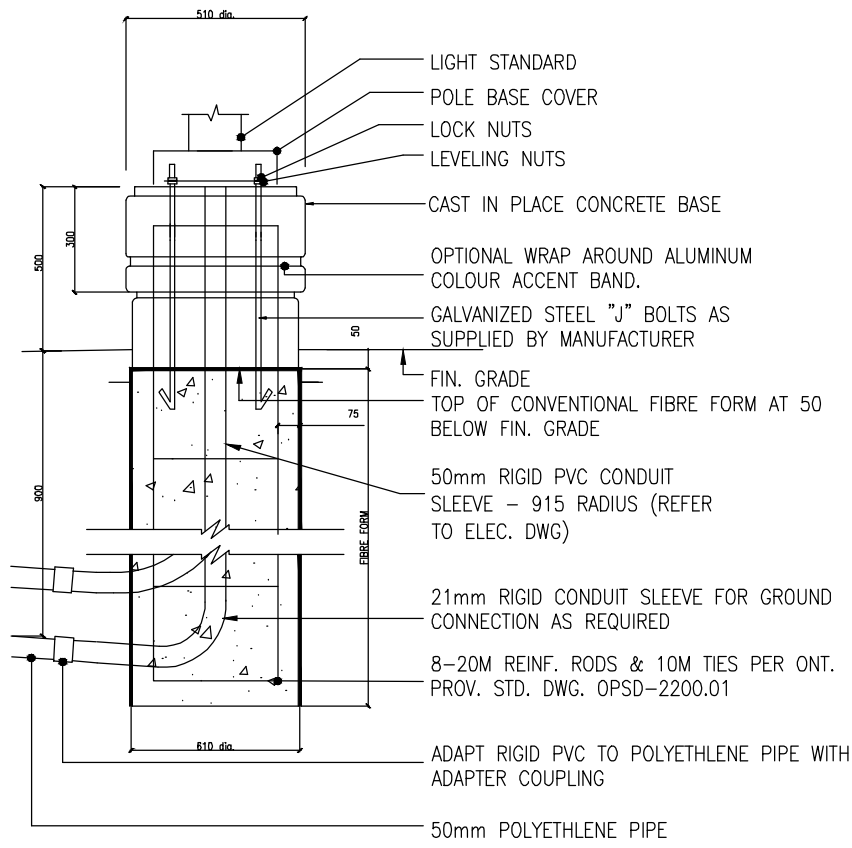
--



- NOTES:
1. PROVIDE DUCTBANK TO OESC STANDARDS AND APPROVAL.
  2. PROVIDE BELL FITTINGS AT EACH END, PROVIDE DUCT SPACERS AT 1.0M INTERVALS.
  3. REFER TO SPECIFICATIONS FOR DETAILED DESCRIPTION.
  4. ALL DIMENSIONS ARE TYPICAL IN MM.

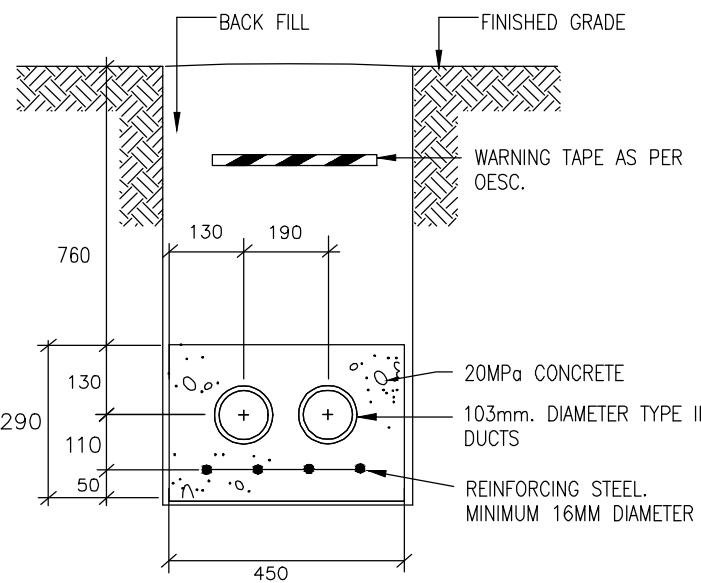


1 SECONDARY DUCTBANK DETAIL  
E2.0  
SCALE: N.T.S.



2 LIGHT POLE BASE DETAIL  
E2.0  
SCALE: N.T.S.

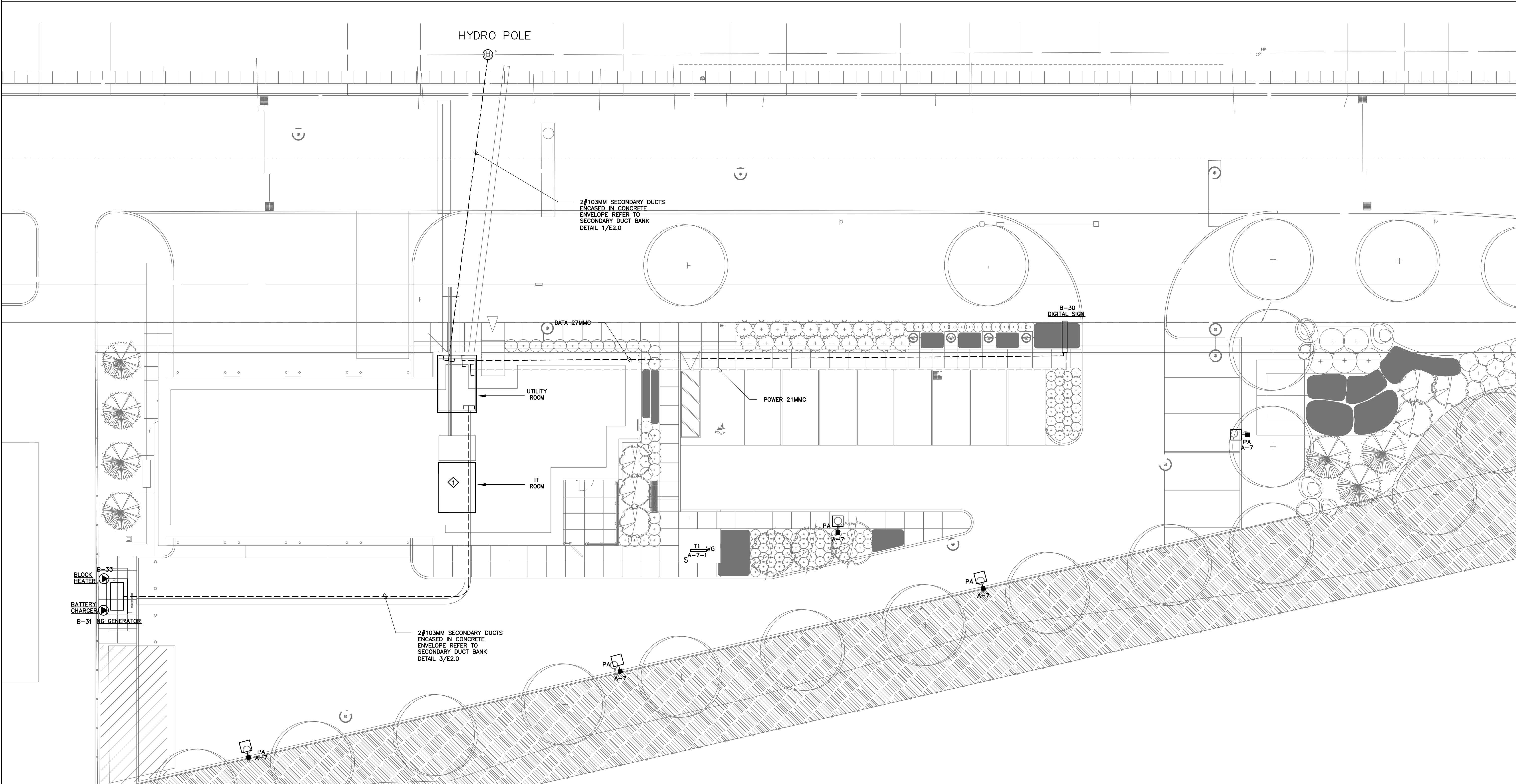
- NOTES:
1. PROVIDE DUCTBANK TO OESC STANDARDS AND APPROVAL.
  2. PROVIDE BELL FITTINGS AT EACH END, PROVIDE DUCT SPACERS AT 1.0M INTERVALS.
  3. REFER TO SPECIFICATIONS FOR DETAILED DESCRIPTION.
  4. ALL DIMENSIONS ARE TYPICAL IN MM.



3 SECONDARY DUCTBANK DETAIL  
E2.0  
SCALE: N.T.S.

- NOTES:
- ALECTRA WILL SUPPLY AND INSTALL THE FOLLOWING:
1. 120/208V PHASE 4 WIRE POLE MOUNTED TRANSFORMER WITH KVA RATING TO SUIT LOAD REQUIREMENTS.
  2. PRIMARY HIGH VOLTAGE CABLES.
  3. POWER CONNECTION AT HYDRO POLE, PRIMARY AND SECONDARY SIDE OF TRANSFORMER.
  4. HYDRO METER
  5. CONTRACTOR TO CARRY A CASH ALLOWANCE AS PER SPECIFICATIONS FOR ITEM 1.2.3&4 TO BE DONE BY ALECTRA.
  6. CONTACT ALECTRA UTILITY TEL: 905-273-9050.

- ELECTRICAL CONTRACTOR SHALL SUPPLY & INSTALL THE FOLLOWING:
1. 2-103MM SECONDARY DUCTS ENCASED IN CONCRETE FROM HYDRO POLE TO THE LOCATION AS SHOWN ON DRAWING.
  2. GROUNDING AT POLE MOUNTED TRANSFORMER AS PER ALECTRA REQUIREMENTS.
  3. RUN #250MCM RWU 90 XLPE+GROUND FROM HYDRO POLE TO MAIN SWITCH IN THE BASEMENT. LEAVE 12 METERS SLACK WITH LUGS AT THE POLE MOUNTED TRANSFORMERS.
  4. SECONDARY CABLES CONNECTION AT MAIN DISCONNECT SWITCH.
  5. INSTALL METER AS PER REQUIREMENTS OF ALECTRA.
  6. CO-ORDINATE ALL WORK WITH LOCAL UTILITIES.



THE CONTENTS OF THIS DRAWING AND SPECIFICATIONS REMAIN THE COPYRIGHT PROPERTY OF THOMAS BROWN ARCHITECT INC. AND MUST BE RETURNED UPON COMPLETION OF THE WORK.

ISSUE OR REVISION		
NO.	ISSUED FOR	DATE
1	ISSUED FOR REVIEW	2018-05-14
2	ISSUED FOR 80% REVIEW	2018-10-02
3	ISSUED FOR 90% DESIGN DEVELOPMENT	2018-11-21
4	ISSUED FOR REVIEW	2019-01-03
5	ISSUED FOR BUILDING PERMIT	2019-03-14
6	ISSUED FOR ADDENDUM ME-1	2019-08-20
7	ISSUED FOR CONSTRUCTION	2020-02-24

PROJECT :

# YORK REGION PRS STATION #29

107 GLEN CAMERON ROAD, MARKHAM

**REGAL CONSULTING ENGINEERS INC.**  
CONSULTING MECHANICAL & ELECTRICAL ENGINEERS  
2359 Royal Windsor Drive, Suite 201, Mississauga, Ontario L5J 4S9  
PHONE: (905)555-3010  
www.regal-eng.com

CLIENT

THE CONTRACTOR SHALL VERIFY ALL DIMENSIONS PRIOR TO COMMENCEMENT OF THE WORK. ANY DISCREPANCIES ARE TO BE REPORTED TO THE CONSULTANT.

ARCHITECT

**THOMASBROWN ARCHITECTS**

A: 197 SPADINA AVE., SUITE 500, TORONTO, ON  
T: 416-594-5710 EXT 101  
W: WWW.TBROWNARCH.COM

PROFESSIONAL SEAL

Approval to Proceed

Project Phase

Authorization (signature)

DWG TITLE

## ELECTRICAL SITE PLAN

ORIENTATION

DATE

Jan. 03, 2019

SCALE

1:150

DRAWN BY

MJ

DWG STATUS:

PERMIT

PROJECT No.

2016-147

DRAWING No.

E2.0

REVISION

--

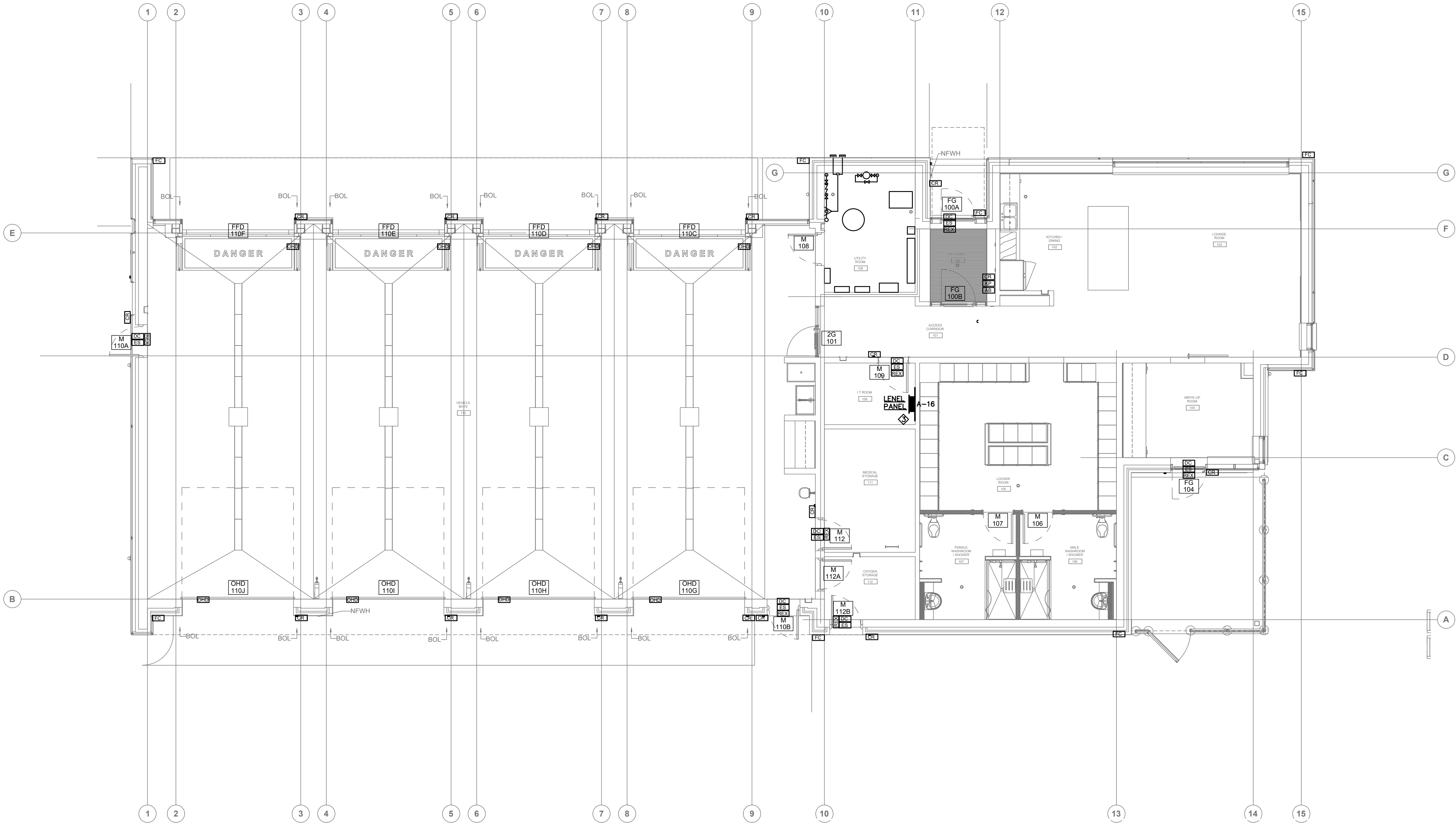






LEGEND	
[1S]	OUTLET FOR SECURITY DOOR STRIKE
[1C]	OUTLET FOR SECURITY CONCEALED DOOR CONTACT
[2S]	OVER HEAD DOOR CONTACT
[2B]	ARMING BUTTON
[3C]	OUTLET FOR SECURITY HID CARD ACCESS READER
[3B]	HONEYWELL CONTROL PANELS
[5C]	OUTLET FOR REQUEST FOR EXIT
[7C]	FIXED AXIS WIDE ANGLE CAMERA

- NOTES:
- SECURITY CONTRACTOR TO PROVIDE INTEGRATION OF DOOR OPERATORS. ALL DOOR OPERATORS TO INCLUDE SEQUENCING CONTROL OK12.
  - FIXED CAMERAS ARE TO BE SUPPLIED BY HONEYWELL AND INSTALLED BY SECURITY CONTRACTOR. FINAL LOCATION FOR THE CAMERAS ARE TO BE APPROVED BY YR DURING CONSTRUCTION TO ACHIEVE BEST FIELD OF VIEW.
- ◆ PROVIDE ALL ROUGH IN CONDUITS FOR FIRE ALARM PANEL TO BE TERMINATED AT THIS PLYWOOD BACK BOARD.



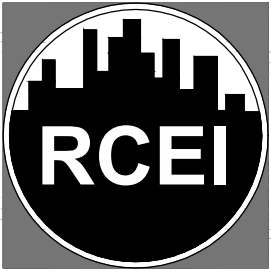
THE CONTENTS OF THIS DRAWING AND SPECIFICATIONS  
REMAIN THE COPYRIGHT PROPERTY OF  
THOMAS BROWN ARCHITECT INC.  
AND MUST BE RETURNED UPON COMPLETION OF THE WORK.

ISSUE OR REVISION		
NO.	ISSUED FOR	DATE
1	ISSUED FOR REVIEW	2018-05-14
2	ISSUED FOR 80% REVIEW	2018-10-02
3	ISSUED FOR 90% DESIGN DEVELOPMENT	2018-11-21
4	ISSUED FOR REVIEW	2019-01-03
5	ISSUED FOR BUILDING PERMIT	2019-03-14
6	ISSUED FOR ADDENDUM ME-1	2019-08-20
7	ISSUED FOR CONSTRUCTION	2020-02-24

PROJECT :

# YORK REGION PRS STATION #29

107 GLEN CAMERON ROAD, MARKHAM



**REGAL CONSULTING ENGINEERS INC.**  
CONSULTING MECHANICAL & ELECTRICAL ENGINEERS  
2359 Royal Windsor Drive, Suite 201, Mississauga, Ontario L5J 4S9  
PHONE: (905) 655-3010  
www.regal-rcei.com



THE CONTRACTOR SHALL VERIFY ALL DIMENSIONS PRIOR  
TO COMMENCEMENT OF THE WORK. ANY DISCREPANCIES  
ARE TO BE REPORTED TO THE CONSULTANT.

ARCHITECT  
**THOMASBROWN**  
ARCHITECTS

A 197 SPADINA AVE., SUITE 500, TORONTO, ON  
T 416-364-5710 EXT 101  
W: WWW.TBROWNARCH.COM

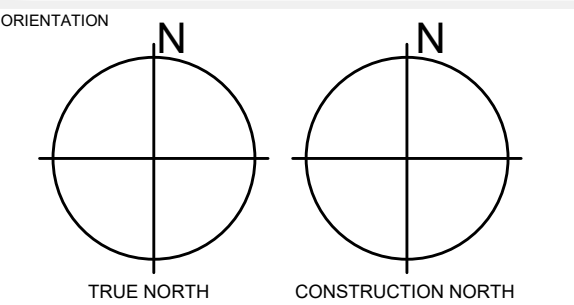
PROFESSIONAL SEAL

Approval to Proceed

Project Phase

Authorization (signature)

DWG TITLE  
**SECURITY  
SYSTEM  
FLOOR PLAN**



DATE  
Jan. 03, 2019

SCALE  
1:75

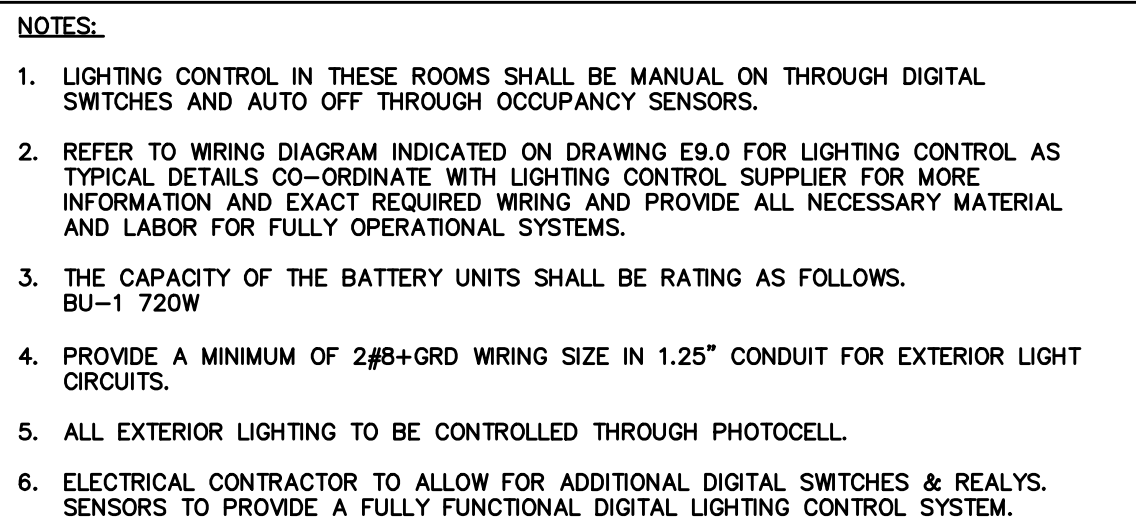
DRAWN BY  
MJ

DWG STATUS  
**PERMIT**

PROJECT No.  
**2016-147**

DRAWING No.  
**E4.0**

REVISION  
--



BATTERY UNIT SCHEDULE						
LOCATION	UNIT NUMBER	EXIT SIGNS	DOUBLE HEADS	SINGLE HEADS	CONNECTED LOAD (WATT)	CAPACITY (WATT)
UTILITY ROOM # 126	BU-1	10	7	8	490	720

REFER TO SPECIFICATION SECTION 26 50 00

THE CONTENTS OF THIS DRAWING AND SPECIFICATIONS  
REMAIN THE COPYRIGHT PROPERTY OF  
**THOMAS BROWN ARCHITECT INC.**  
AND MUST BE RETURNED UPON COMPLETION OF THE WORK.

ISSUE OR REVISION		
NO.	ISSUED FOR	DATE
1	ISSUED FOR REVIEW	2018-05-14
2	ISSUED FOR 80% REVIEW	2018-10-02
3	ISSUED FOR 90% DESIGN DEVELOPMENT	2018-11-21
4	ISSUED FOR REVIEW	2019-01-03
5	ISSUED FOR BUILDING PERMIT	2019-03-14
6	ISSUED FOR ADDENDUM ME-1	2019-08-20
7	ISSUED FOR CONSTRUCTION	2020-02-24

PROJECT : YORK REGION PRS  
STATION #29

107 GLEN CAMERON ROAD, MARKHAM



**REGAL CONSULTING ENGINEERS INC.**  
CONSULTING MECHANICAL & ELECTRICAL ENGINEERS  
2359 Royal Windsor Drive, Suite 201, Mississauga, Ontario L5J 4S9  
PHONE: (905)855-3010  
[www.regal-eng.com](http://www.regal-eng.com)

**CLIENT**



THE CONTRACTOR SHALL VERIFY ALL DIMENSIONS PRIOR TO COMMENCEMENT OF THE WORK. ANY DISCREPANCIES ARE TO BE REPORTED TO THE CONSULTANT.

ARCHITECT

THOMASBROWN  
ARCHITECTS

**A:** 197 SPADINA AVE, SUITE 500, TORONTO, ON  
**T:** 416-364-5710 EXT 101  
**W:** WWW.TBROWNARCH.COM

PROFESSIONAL SEAL

Approval to Proceed

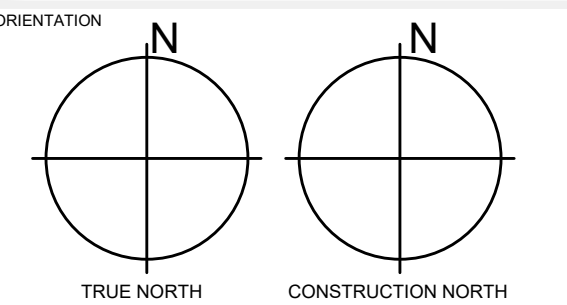
Project Phase

---

Authorization (signature)

### WORKING TITLE

## LIGHTING FLOOR PLAN



DATE Jan. 03, 2019

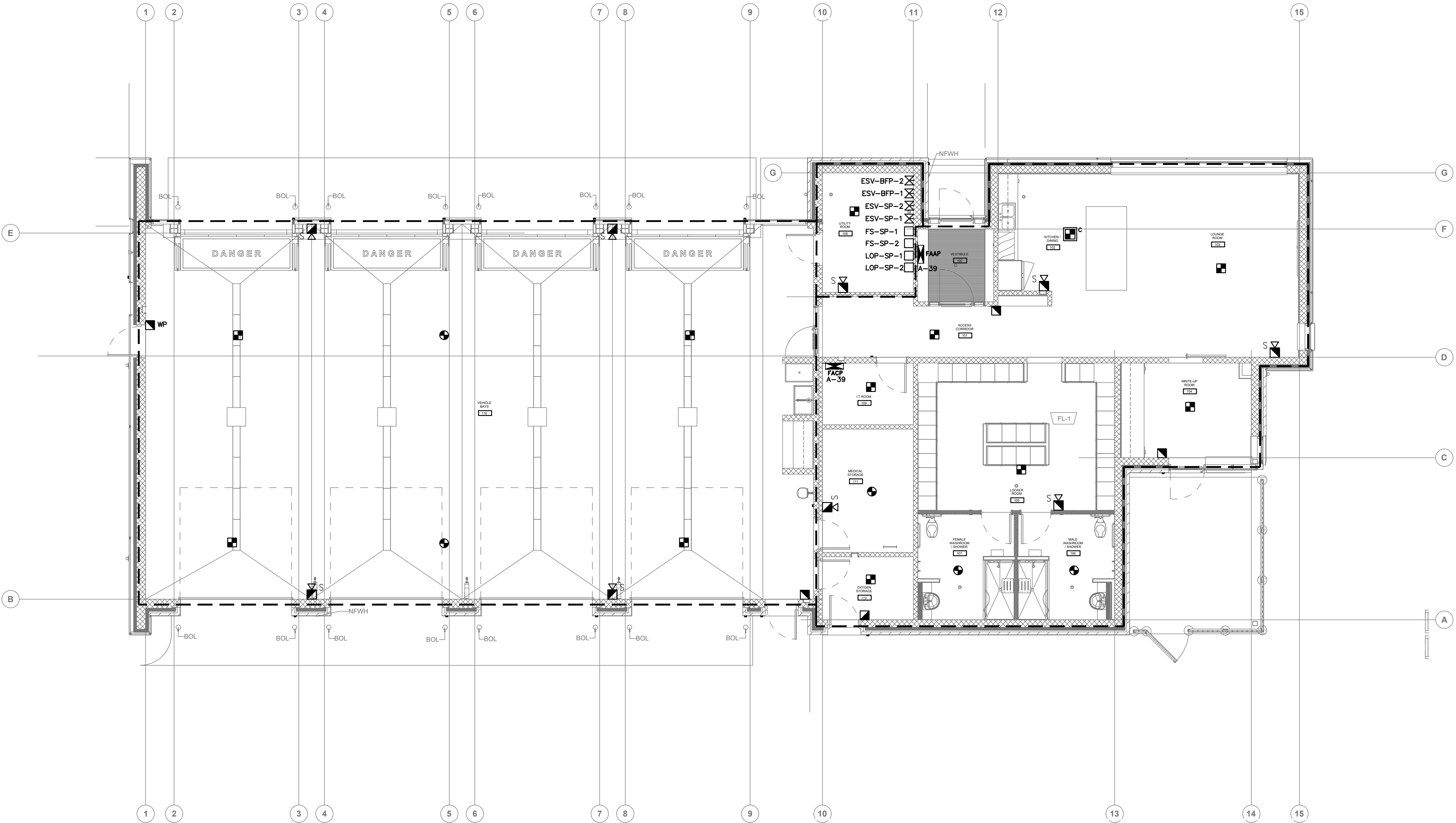
SCALE	1:75	DRAWN BY	MJ
-------	------	----------	----

WG STATUS : PERMIT

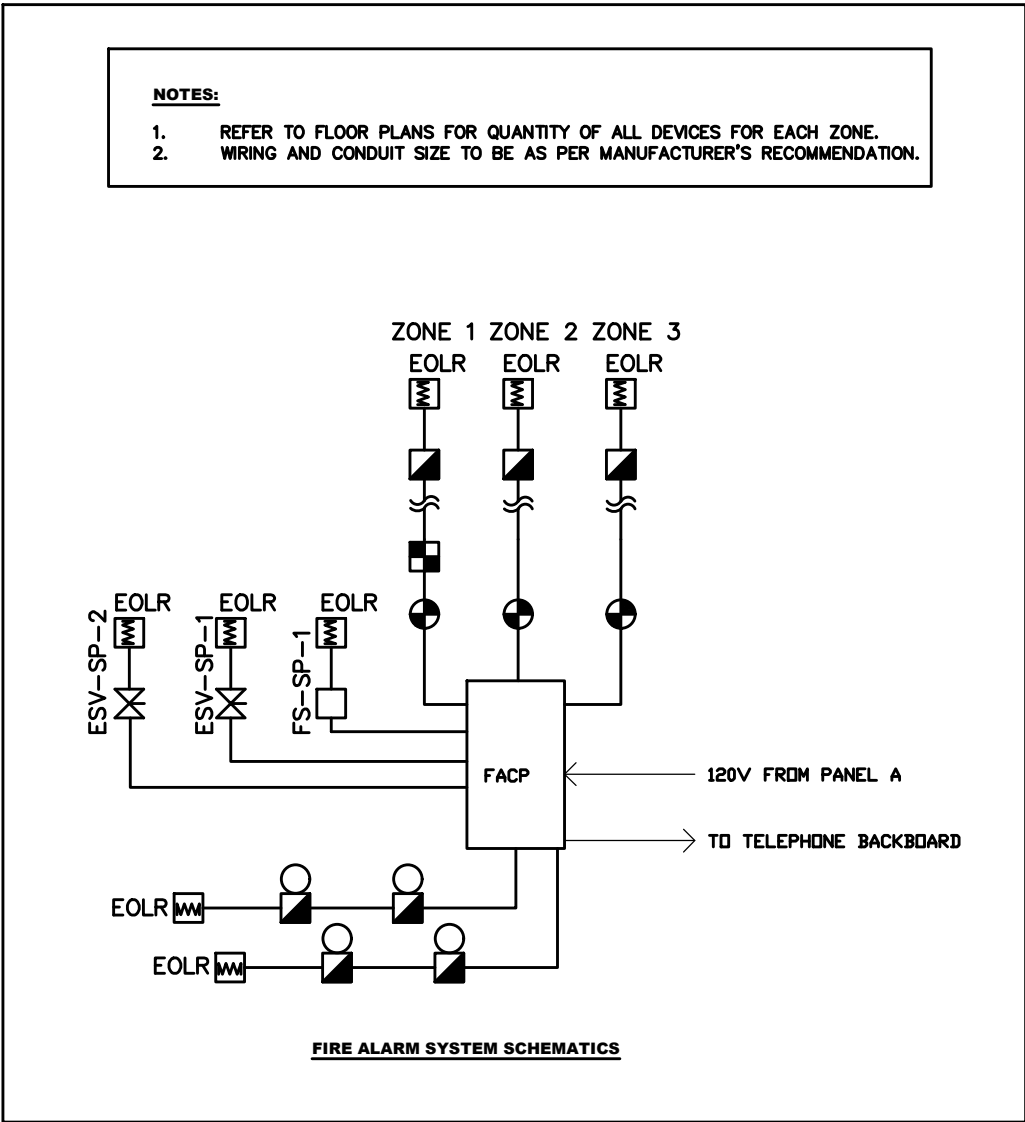
PROJECT No. 2016-147

DRAWING No.	<b>E5.0</b>	REVISION	--
-------------	-------------	----------	----





FIRE ALARM ZONE SCHEDULE									
ABBREVIATIONS									
FZ - ALARM ZONE	HD - HEAT DETECTOR	FS - FLOW SWITCH							
SZ - ALERT ZONE	SD - SMOKE DETECTOR	PS - PRESSURE SWITCH							
CZ - CONTROL ZONE	DSD - DUCT SMOKE DETECTOR	SV - SUPERVISED VALVE							
	MP - MANUAL PULL STATION	MS - MONITOR SWITCH							
	SC - SUPERVISED CONTACT								
ZONE NO.	ZONE IDENTIFICATIONS	DEVICES	FUNCTIONS	REMARKS	ZONE NO.	ZONE IDENTIFICATIONS	DEVICES	FUNCTIONS	REMARKS
FZ-01	EMS CREW AREA	SD/HD/PS	ALARM		SZ-01	SPRINKLER VALVE	MS-01	ALERT	
FZ-02	EMS VEHICLE BAY	HD/PS	ALARM		SZ-02	SPRINKLER VALVE	MS-02	ALERT	
NOTES:									
1. PROVIDE FIRE ALARM GRAPHICS TO BE INSTALLED ADJACENT TO THE LED ANNUNCIATOR IN THE MAIN ENTRANCE.									
2. FOR NUMBER AND LOCATION OF DEVICES REFER TO FLOOR PLANS.									
3. PROVIDE WRING IN CONDUIT FOR COMPLETE OPERATIONAL SYSTEM.									
4. ALL PULL STATIONS SHALL BE C/W PLASTIC COVERS WITH LOCAL HORN.									
5. PROVIDE ISOLATORS FOR EVERY ONE TO TWO HOUR RATED FIRE COMPARTMENT.									
6. ALL LOOP WIRING FOR INITIATING CIRCUITS SHOULD RUN ON SEPARATE ROUTE INCLUDING RISER.									
7. SOUND ALL AUDIBLE SIGNALS AND SHUT DOWN AIR SYSTEM IN CASE OF GENERAL ALARM.									
8. PROVIDE CONNECTIONS C/W EMT CONDUIT AND WIRING TO ALL FIRE PROTECTION EQUIPMENT AND DEVICES (SPRINKLER SYSTEM) SHOWN ON THE FIRE ALARM ZONE SCHEDULE AS ALARM OR SUPERVISORY ZONE. REFER TO MECHANICAL DRAWINGS AND COORDINATE WITH MECHANICAL CONTRACTOR FOR EXACT LOCATIONS OF DEVICE PRIOR TO ROUGH IN.									



THE CONTENTS OF THIS DRAWING AND SPECIFICATIONS  
REMAIN THE COPYRIGHT PROPERTY OF  
THOMAS BROWN ARCHITECT INC.  
AND MUST BE RETURNED UPON COMPLETION OF THE WORK.

ISSUE OR REVISION		
NO.	ISSUED FOR	DATE
1	ISSUED FOR REVIEW	2018-05-14
2	ISSUED FOR 80% REVIEW	2018-10-02
3	ISSUED FOR 90% DESIGN DEVELOPMENT	2018-11-21
4	ISSUED FOR REVIEW	2019-01-03
5	ISSUED FOR BUILDING PERMIT	2019-03-14
6	ISSUED FOR ADDENDUM ME-1	2019-08-20
7	ISSUED FOR CONSTRUCTION	2020-02-24

PROJECT :  
**YORK REGION PRS  
STATION #29**  
107 GLEN CAMERON ROAD, MARKHAM



**REGAL CONSULTING ENGINEERS INC.**  
CONSULTING MECHANICAL & ELECTRICAL ENGINEERS  
2359 Royal Windsor Drive, Suite 201, Mississauga, Ontario L5J 4S9  
PHONE: (905) 855-2010  
www.regal-rcei.com



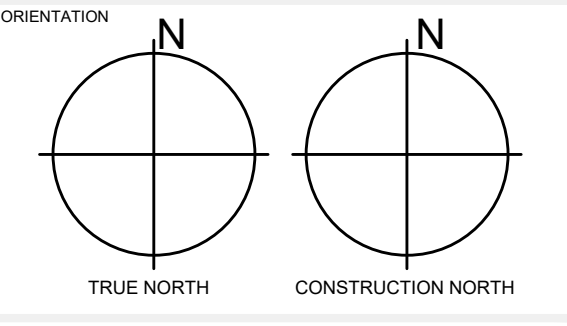
THE CONTRACTOR SHALL VERIFY ALL DIMENSIONS PRIOR  
TO COMMENCEMENT OF THE WORK. ANY DISCREPANCIES  
ARE TO BE REPORTED TO THE CONSULTANT.

ARCHITECT  
**THOMASBROWN  
ARCHITECTS**

A 197 SPADINA AVE, SUITE 500, TORONTO, ON  
T 416-364-5710 EXT 101  
W WWW.TBROWNARCH.COM

PROFESSIONAL SEAL  
Approval to Proceed  
Project Phase  
Authorization (signature)

DWG TITLE  
**FIRE ALARM  
SYSTEM  
FLOOR PLAN**



DATE  
Jan. 03, 2019

SCALE  
1:75

DRAWN BY  
MJ

DWG STATUS :  
**PERMIT**

PROJECT No.  
**2016-147**

DRAWING No.  
**E6.0**

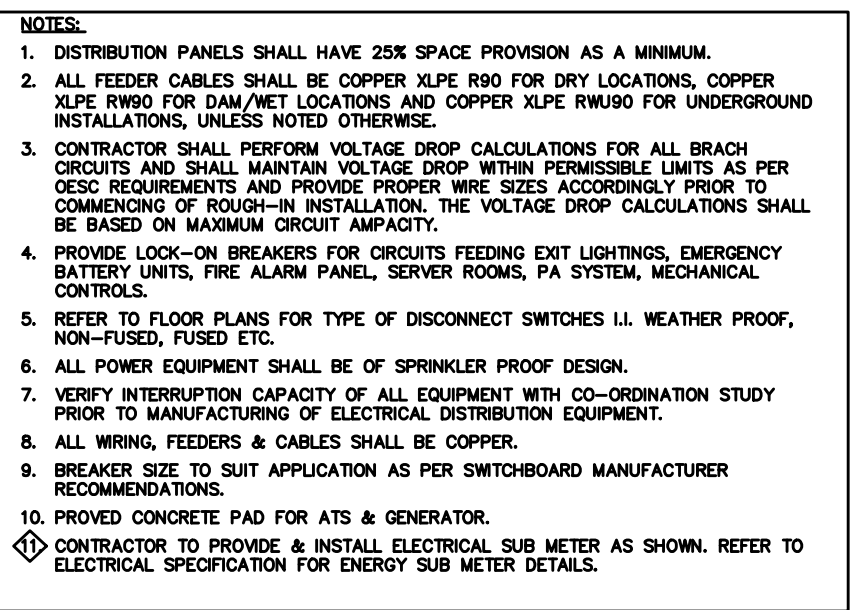
REVISION  
--



## PANELBOARD A SCHEDULE

A 16x16 grid with black dots at various intersections. The dots are located at the following (row, column) coordinates (assuming the top-left is (0,0) and the bottom-right is (15,15)): (0,0), (0,1), (0,2), (0,3), (0,4), (0,5), (0,6), (0,7), (0,8), (0,9), (0,10), (0,11), (0,12), (0,13), (0,14), (0,15), (1,0), (1,1), (1,2), (1,3), (1,4), (1,5), (1,6), (1,7), (1,8), (1,9), (1,10), (1,11), (1,12), (1,13), (1,14), (1,15), (2,0), (2,1), (2,2), (2,3), (2,4), (2,5), (2,6), (2,7), (2,8), (2,9), (2,10), (2,11), (2,12), (2,13), (2,14), (2,15), (3,0), (3,1), (3,2), (3,3), (3,4), (3,5), (3,6), (3,7), (3,8), (3,9), (3,10), (3,11), (3,12), (3,13), (3,14), (3,15), (4,0), (4,1), (4,2), (4,3), (4,4), (4,5), (4,6), (4,7), (4,8), (4,9), (4,10), (4,11), (4,12), (4,13), (4,14), (4,15), (5,0), (5,1), (5,2), (5,3), (5,4), (5,5), (5,6), (5,7), (5,8), (5,9), (5,10), (5,11), (5,12), (5,13), (5,14), (5,15), (6,0), (6,1), (6,2), (6,3), (6,4), (6,5), (6,6), (6,7), (6,8), (6,9), (6,10), (6,11), (6,12), (6,13), (6,14), (6,15), (7,0), (7,1), (7,2), (7,3), (7,4), (7,5), (7,6), (7,7), (7,8), (7,9), (7,10), (7,11), (7,12), (7,13), (7,14), (7,15), (8,0), (8,1), (8,2), (8,3), (8,4), (8,5), (8,6), (8,7), (8,8), (8,9), (8,10), (8,11), (8,12), (8,13), (8,14), (8,15), (9,0), (9,1), (9,2), (9,3), (9,4), (9,5), (9,6), (9,7), (9,8), (9,9), (9,10), (9,11), (9,12), (9,13), (9,14), (9,15), (10,0), (10,1), (10,2), (10,3), (10,4), (10,5), (10,6), (10,7), (10,8), (10,9), (10,10), (10,11), (10,12), (10,13), (10,14), (10,15), (11,0), (11,1), (11,2), (11,3), (11,4), (11,5), (11,6), (11,7), (11,8), (11,9), (11,10), (11,11), (11,12), (11,13), (11,14), (11,15), (12,0), (12,1), (12,2), (12,3), (12,4), (12,5), (12,6), (12,7), (12,8), (12,9), (12,10), (12,11), (12,12), (12,13), (12,14), (12,15), (13,0), (13,1), (13,2), (13,3), (13,4), (13,5), (13,6), (13,7), (13,8), (13,9), (13,10), (13,11), (13,12), (13,13), (13,14), (13,15), (14,0), (14,1), (14,2), (14,3), (14,4), (14,5), (14,6), (14,7), (14,8), (14,9), (14,10), (14,11), (14,12), (14,13), (14,14), (14,15), (15,0), (15,1), (15,2), (15,3), (15,4), (15,5), (15,6), (15,7), (15,8), (15,9), (15,10), (15,11), (15,12), (15,13), (15,14), (15,15).

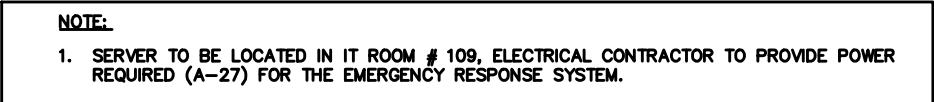
## PANELBOARD B SCHEDULE



**NOTES**

1. PROVIDE POWER CONNECTION TO ALL EQUIPMENTS LISTED IN THE SCHEDULE. REFER TO ELECTRICAL AND MECHANICAL LAYOUTS FOR EXACT LOCATION OF EQUIPMENTS.
2. PROVIDE SEPARATE BREAKER FOR INDIVIDUAL MECHANICAL EQUIPMENT. SIZE AS INDICATED IN THE SCHEDULE.
3. PROVIDE LOCAL DISCONNECT SWITCH FOR ALL MECHANICAL EQUIPMENTS AS REQUIRED BY CISC.
4. DIVISION 16 TO PROVIDE POWER WIRING TO & FROM STARTERS (SUPPLIED BY DIV. 15 & INSTALLED BY DIVISION 16) TO MECHANICAL EQUIPMENTS.
5. DIVISION 16 SHALL REFER TO MECHANICAL DRAWINGS FOR LOCATIONS OF MECHANICAL EQUIPMENT AND SHALL COORDINATE FOR MECHANICAL MECHANICAL EQUIPMENT LOCATIONS, STARTERS LOCATIONS AND BREAKERS SIZES & WIRES WITH THE MECHANICAL CONTRACTOR & CONSULTANT PRIOR TO ROUGH-IN.
6. LOCATIONS OF BOILERS AND HOT WATER HEATERS DISCONNECT SWITCHES SHALL BE NEXT TO THE ENTRANCE DOOR OF THE RESPECTIVE ROOM.
7. LOCATIONS OF BOILERS AND HOT WATER HEATERS DISCONNECT SWITCHES SHALL BE NEXT TO THE ENTRANCE DOOR OF THE RESPECTIVE ROOM.
8. REFER TO MECHANICAL DRAWINGS/DRAWINGS FOR DIVISION 16 SCOPE OF WORK.
9. RESERVED.
10. LOCATION OF ON/OFF SWITCHES, THERMOSTATS AND SPEED CONTROLLER SWITCHES SHALL BE VERIFIED/COORDINATED ON SITE WITH OTHER TRADES AND CLIENT'S REPRESENTATIVE PRIOR TO ROUGH-IN.
11. PROVIDE POWER CONNECTION TO ALL REVERSE ACTING THERMOSTATS AND SPEED CONTROLLER SWITCHES AND FEED FROM RESPECTIVE CIRCUITS FEEDING RESPECTIVE MECHANICAL EQUIPMENT WHICH SHALL BE CONTROLLED VIA THE REVERSE ACTING THERMOSTATS AND SPEED CONTROLLERS. LOCATIONS OF DEVICES SHALL BE WITHIN THE SAME AREA SERVED BY THE RESPECTIVE MECHANICAL EQUIPMENT. COORDINATE ON SITE FOR DEVICE LOCATIONS WITH ARCHITECT AND CONSULTANT PRIOR TO ROUGH IN.
12. REFER TO PANEL SCHEDULES AND FLOOR PLAN FOR ORCUTING.

MIGARE SYSTEM CONSIST OF THE FOLLOWING:	
CO-ORDINATOR BUNDLE	NC-2100K 1 EACH
SOFTWARE	NC-2100 SW 1 EACH
1 LED W/INDICOM LIGHT	4 EACH
PATIENT UNIT	NC-2000 4 EACH
SERVER	1 EACH
ROUTER	1 EACH
1 CABLE ELECTRICAL BOX	1 EACH W/UPC 4 EACH
ELECTRICAL BOX	1XW-PS240B 1 EACH
24V POWER SUPPLY	RB-MD-950 1 EACH
CABLE 1 FOOT	200'
EOL-103	END OF LINE RESISTOR



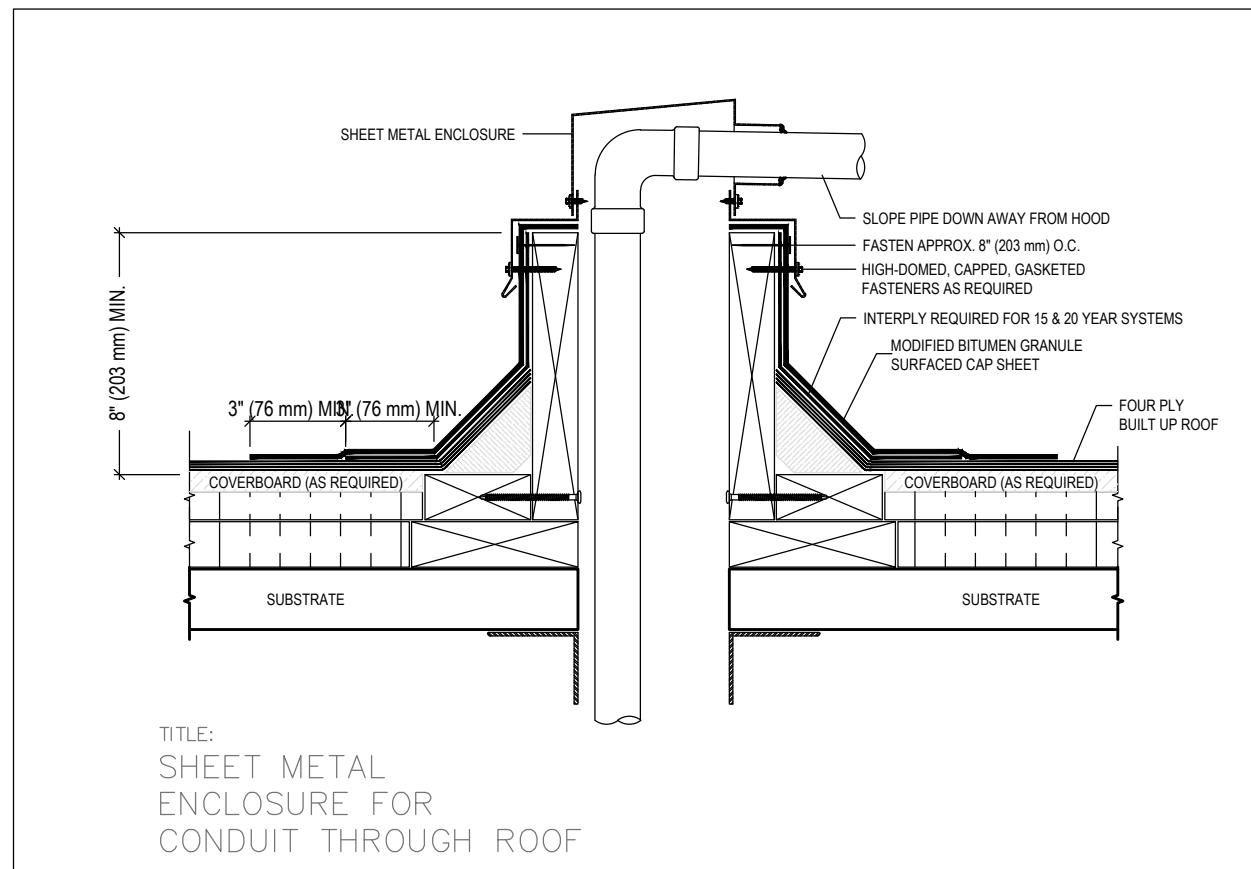
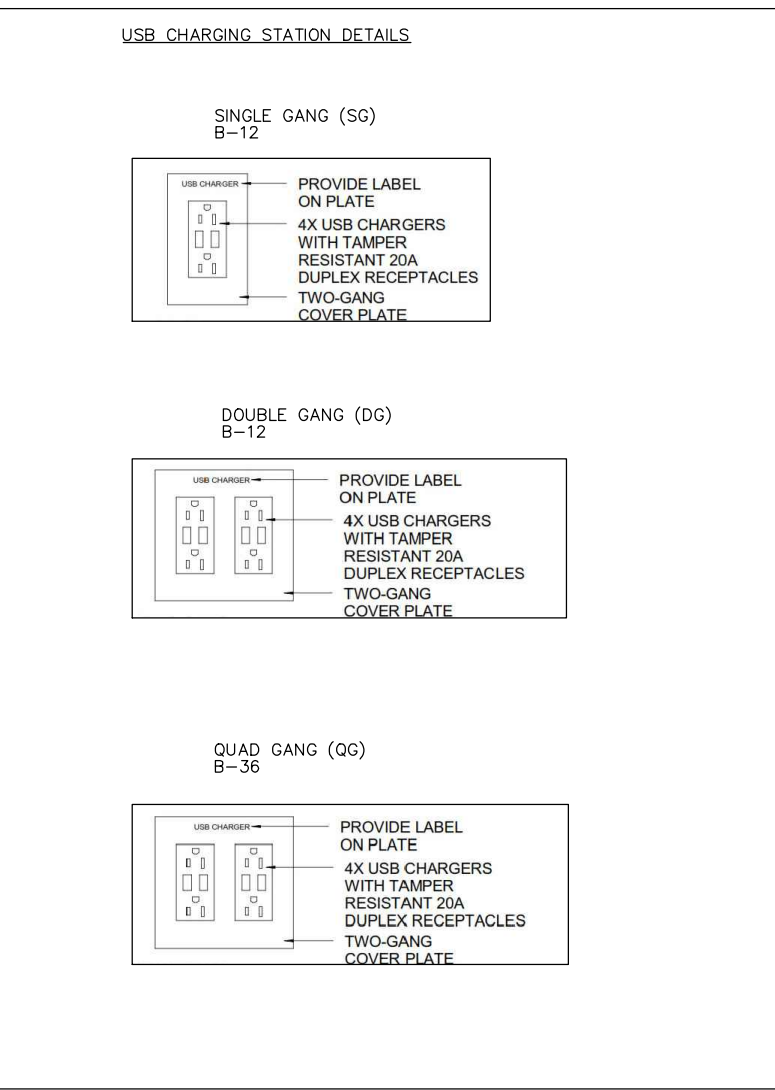
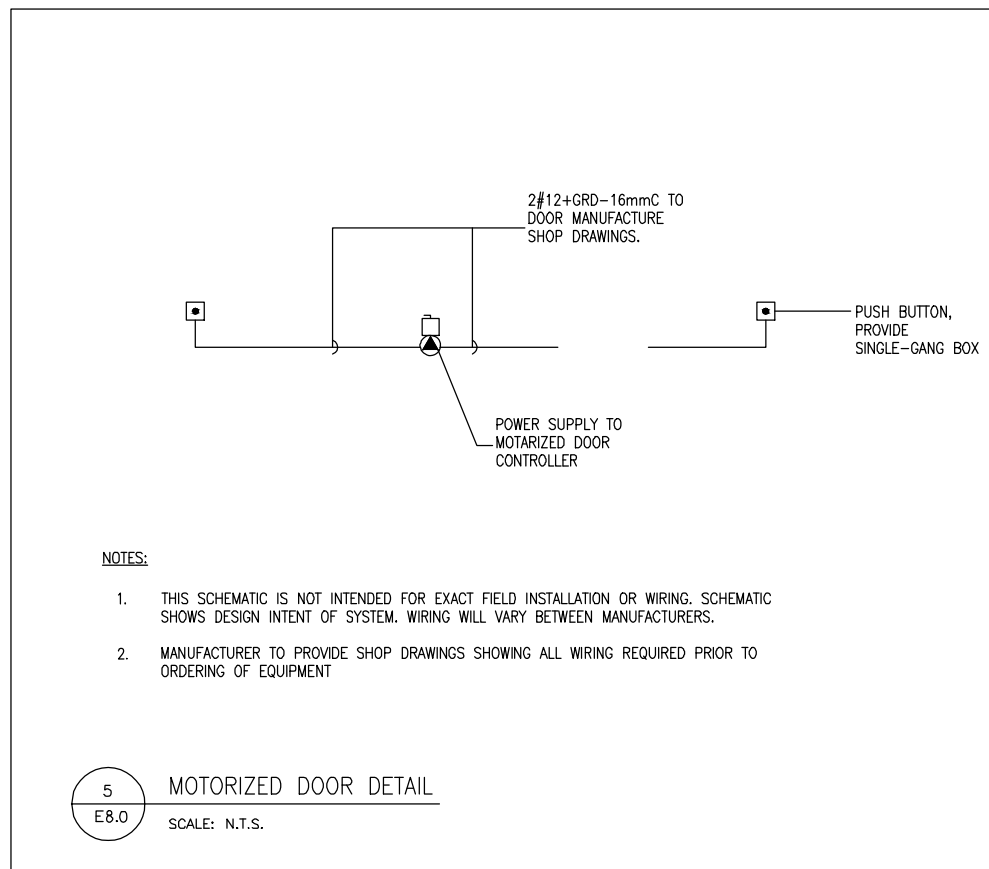
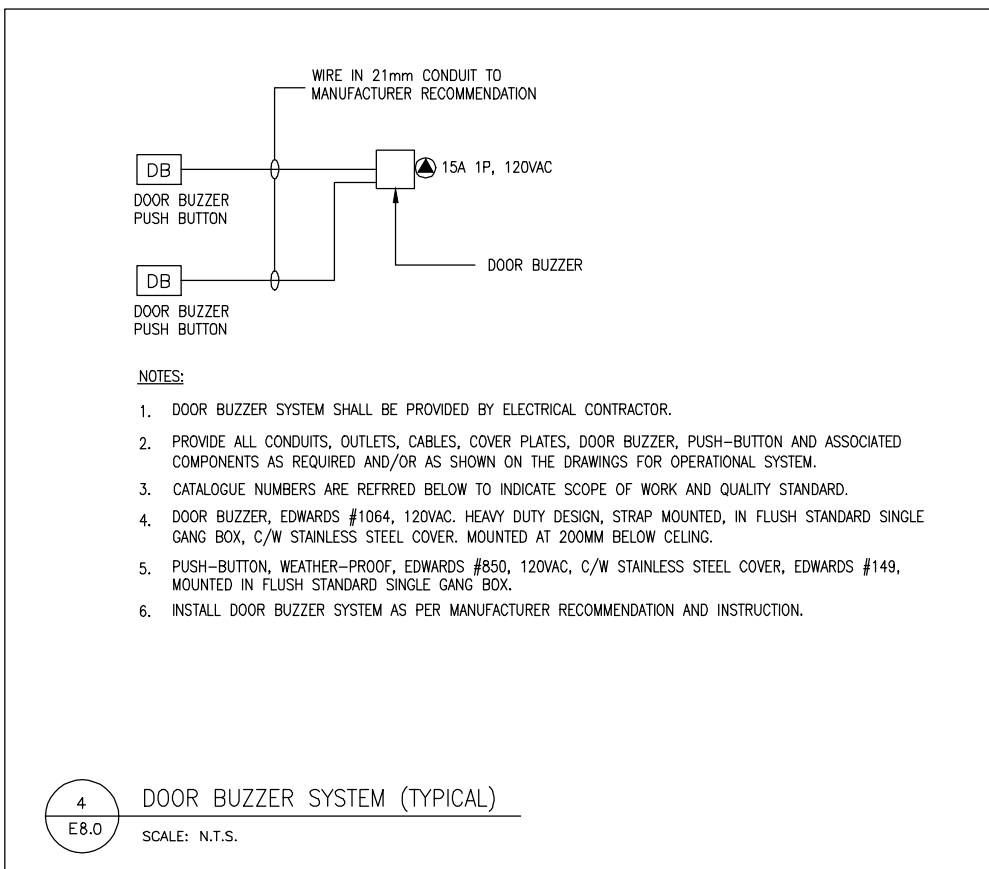
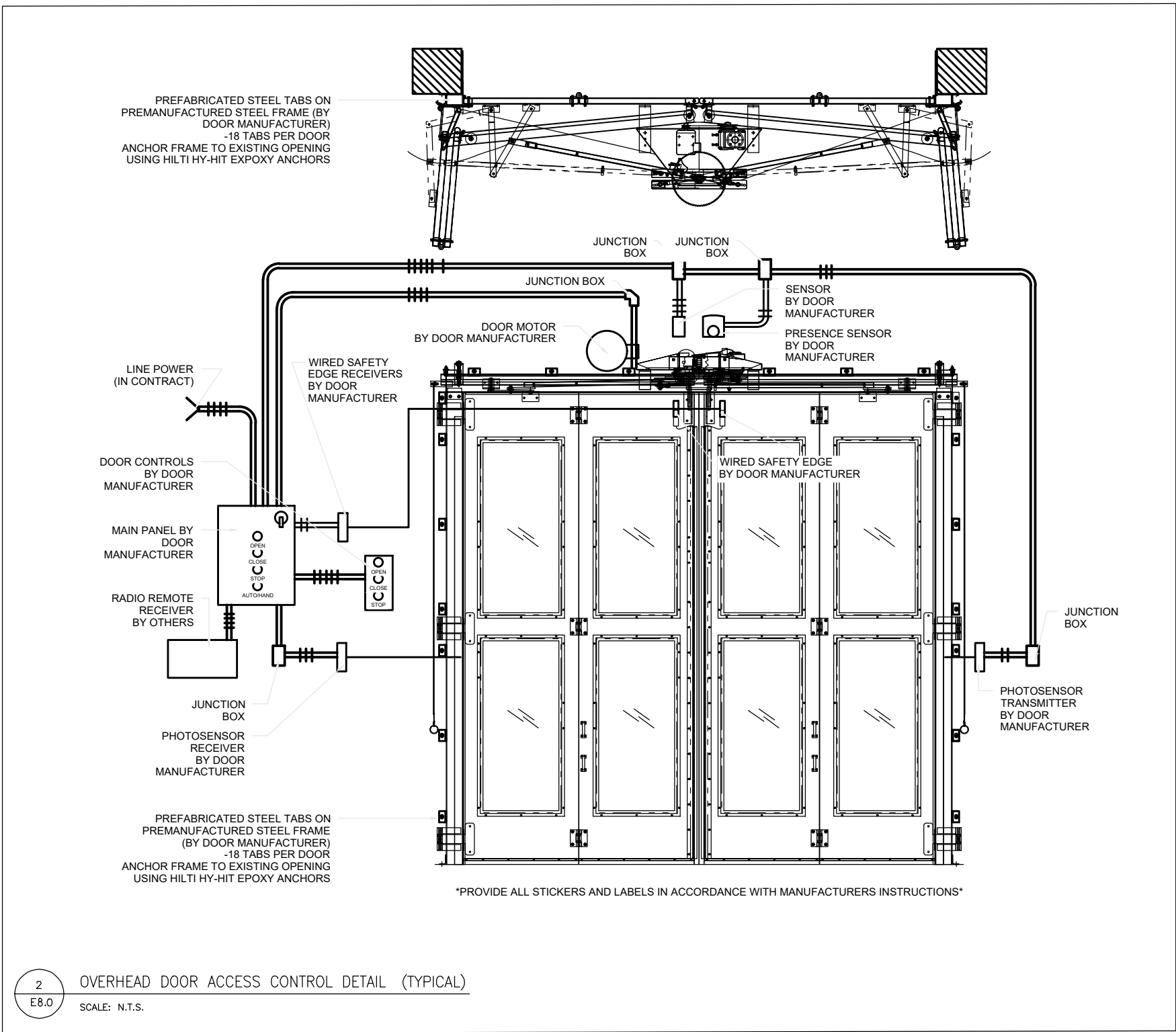
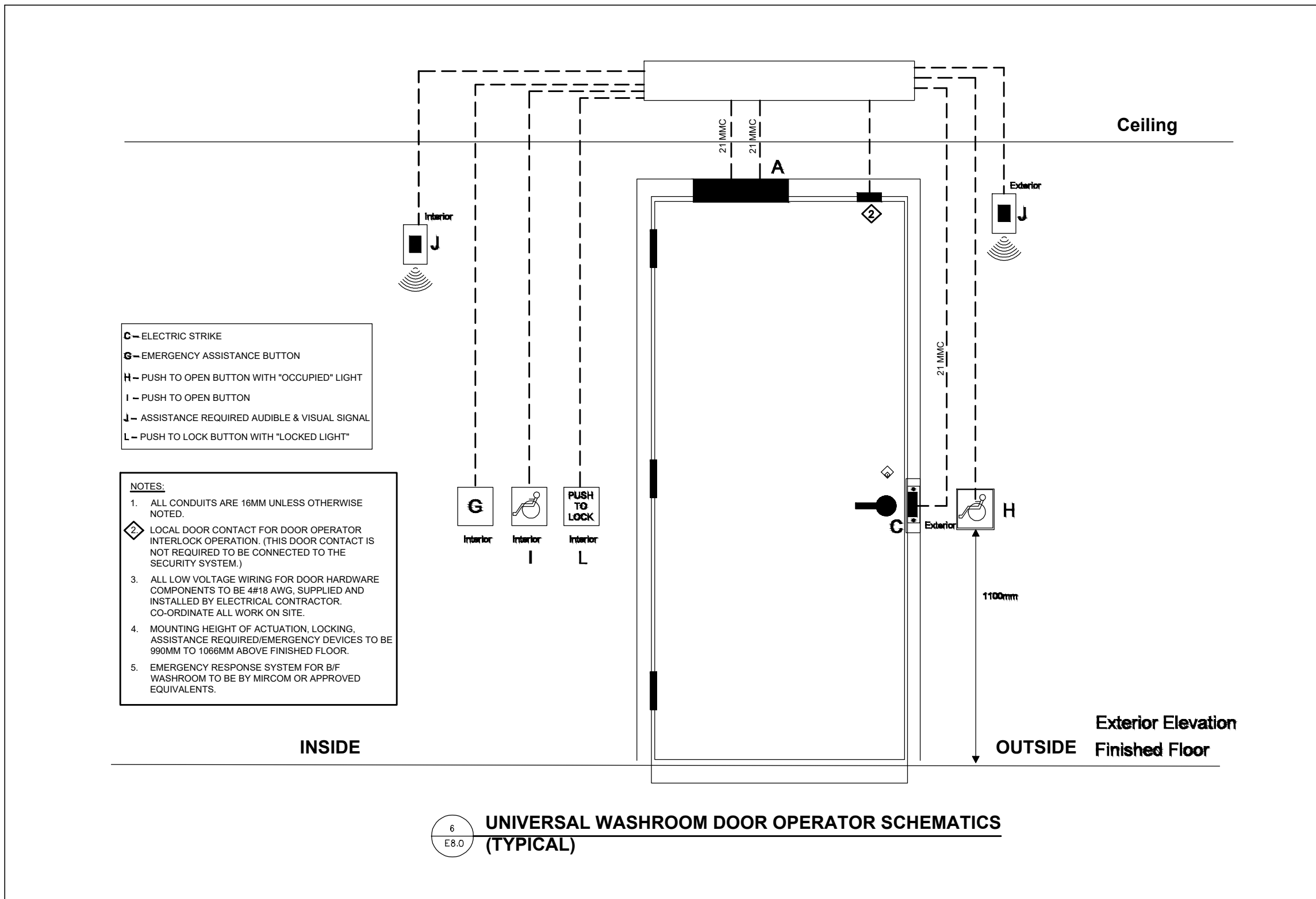
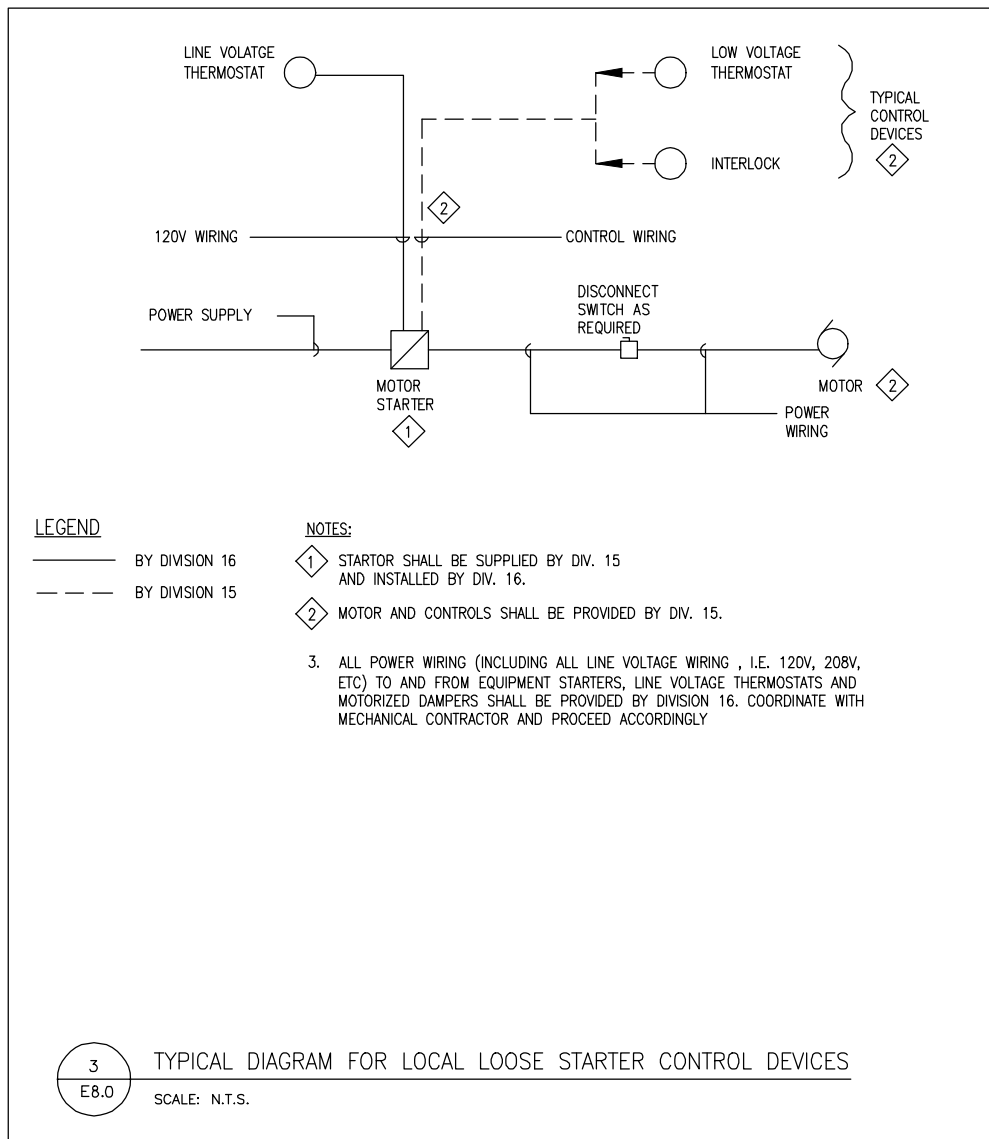
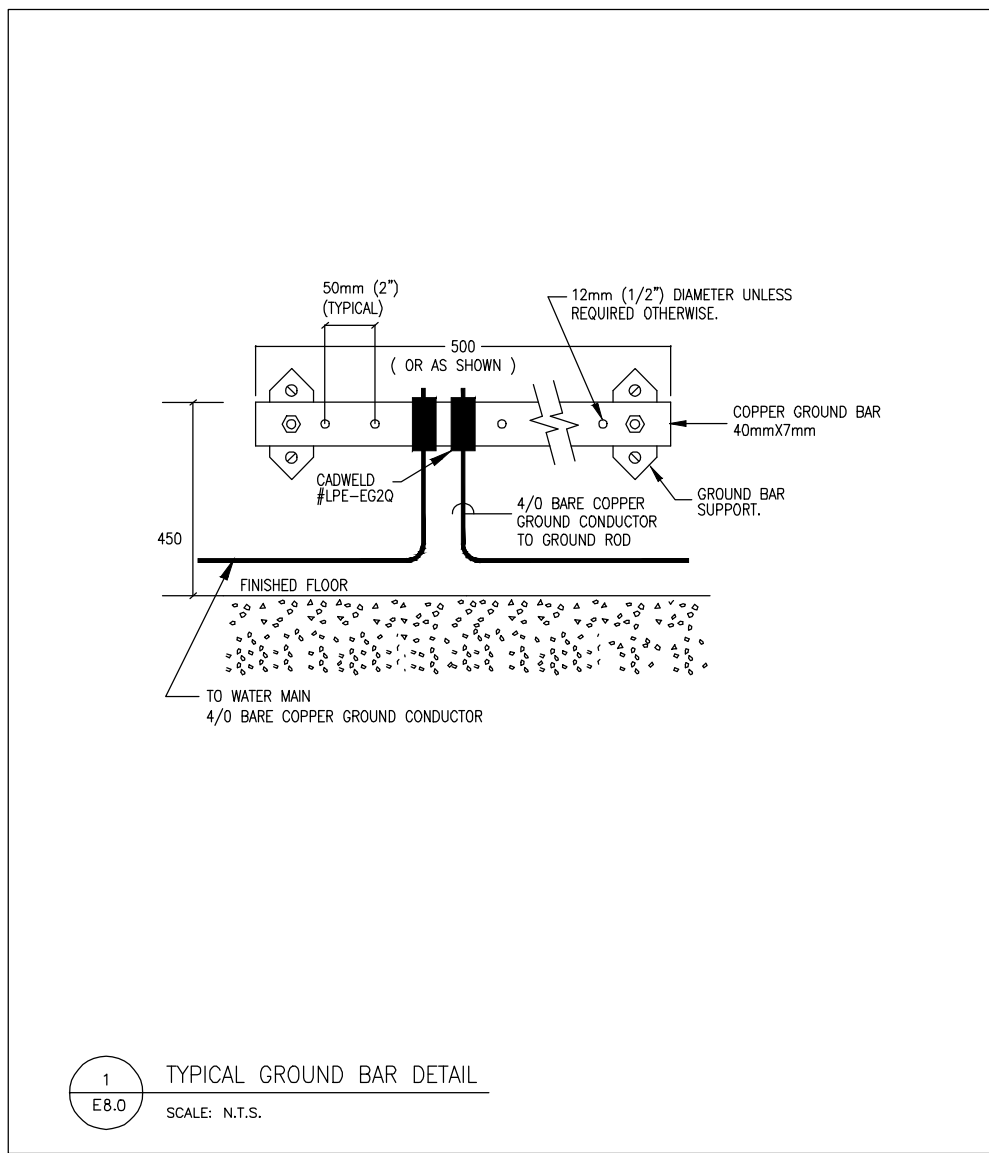
PROJECT: YORK REGION PRS  
STATION #29

107 GLEN CAMERON ROAD, MARKHAM

# SINGLE LINE DIAGRAM & SCHEDULES

DATE		Jan. 03, 2019	
SCALE		1:75	DRAWN BY MJ
DWG STATUS :			
PERMIT			
PROJECT No.		2016-147	
DRAWING No.		E7.0	REVISION --





THE CONTENTS OF THIS DRAWING AND SPECIFICATIONS REMAIN THE COPYRIGHT PROPERTY OF THOMAS BROWN ARCHITECT INC. AND MUST BE RETURNED UPON COMPLETION OF THE WORK.		
ISSUE OR REVISION		
NO.	ISSUED FOR	DATE
1	ISSUED FOR REVIEW	2018-05-14
2	ISSUED FOR 80% REVIEW	2018-10-02
3	ISSUED FOR 90% DESIGN DEVELOPMENT	2018-11-21
4	ISSUED FOR REVIEW	2019-01-03
5	ISSUED FOR BUILDING PERMIT	2019-03-14
6	ISSUED FOR ADDENDUM ME-1	2019-08-20
7	ISSUED FOR CONSTRUCTION	2020-02-24

PROJECT :

YORK REGION PRS  
STATION #29

107 GLEN CAMERON ROAD, MARKHAM

RCEI

REGAL CONSULTING ENGINEERS INC.  
CONSULTING MECHANICAL & ELECTRICAL ENGINEERS  
2359 Royal Windsor Drive, Suite 201, Mississauga, Ontario L5J 4S9  
PHONE: (905) 655-2010  
www.regal-ene.com

CLIENT

York Region

THE CONTRACTOR SHALL VERIFY ALL DIMENSIONS PRIOR TO COMMENCEMENT OF THE WORK. ANY DISCREPANCIES ARE TO BE REPORTED TO THE CONSULTANT.

ARCHITECT

THOMASBROWN  
ARCHITECTS

A 197 SPADINA AVE., SUITE 500, TORONTO, ON  
T 416-364-5710 EXT 101  
W WWW.TBROWNARCH.COM

PROFESSIONAL SEAL

Approval to Proceed

Project Phase

Authorization (signature)

DWG TITLE

ELECTRICAL  
DETAILS

ORIENTATION

TRUE NORTH

CONSTRUCTION NORTH

DATE

Jan. 03, 2019

SCALE

1:75

DRAWN BY

MJ

DWG STATUS

PERMIT

PROJECT No.

2016-147

DRAWING No.

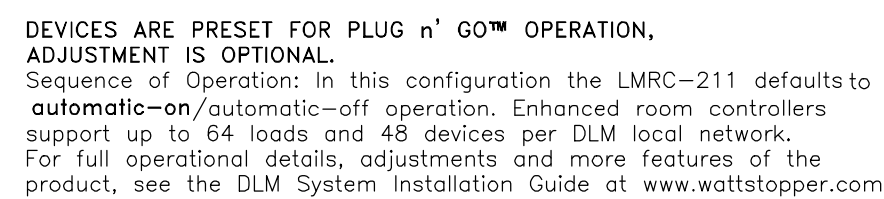
E8.0

REVISION

--



- MANUAL ON 100%
- AUTO OFF AFTER VACANCY VIA OCCUPANCY SENSOR



### LMRC-211 Single Relay Wiring Diagram

- **AUTO ON 100%**
- **AUTO OFF AFTER VACANCY VIA OCCUPANCY SENSOR**
- **USE OF ULTRASONIC OR DUAL TECHNOLOGY SENSOR**



1. THESE DETAILS ARE TYPICALLY SPECIFIC FOR INDICATION PURPOSE ONLY. ELECTRICAL CONTRACTOR SHALL COORDINATE WITH LIGHTING CONTRACTOR TO DETERMINE SUPPLIER OF LIGHTING FIXTURES. CONTRACTOR SHALL RETURN DETAILS PRIOR TO ROUGH IN FOR FULLY OPERATIONAL SYSTEM.
2. RETURN TO FLOOR PLAN FOR QUANTITIES AND TYPES OF DEVICES REQUIRED AND COORDINATE WITH SYSTEM SUPPLIER/MANUFACTURER FOR EXACT LOCATIONS OF SENSORS PRIOR TO ROUGH IN.
3. LIGHTING CONTROL SHALL BE PROVIDED IN ACCORDANCE WITH ASHRAE 90.1, PROVIDE ALL NECESSARY MATERIAL AND LABOR REQUIRED TO COMPLY ACCORDINGLY FOR FULLY OPERATIONAL SYSTEM.
4. PROVIDE PROGRAMMING AND SCHEDULING AS SCHEDULING AS PER CLIENT'S REQUEST.
5. CONTRACTOR TO ENSURE COMPATIBILITY BETWEEN THE DIMMING BALLASTS AND THE WATTSOURCE DIMMING CONTROLLER. PROVIDE ALL NECESSARY MATERIAL AND LABOR FOR FULLY OPERATIONAL SYSTEM.
6. ALL EXTERIOR LIGHTING TO BE CONTROLLED BY PHOTOCELLS AND CIRCUITRY TO TIME BACK WITH SMALL OFFSETS.

THE CONTENTS OF THIS DRAWING AND SPECIFICATIONS  
REMAIN THE COPYRIGHT PROPERTY OF  
**THOMAS BROWN ARCHITECT INC.**  
AND MUST BE RETURNED UPON COMPLETION OF THE WORK.

**ISSUE OR REVISION**

NO.	ISSUED FOR	DATE
1	ISSUED FOR REVIEW	2018-05-14
2	ISSUED FOR 80% REVIEW	2018-10-02
3	ISSUED FOR 90% DESIGN DEVELOPMENT	2018-11-21
4	ISSUED FOR REVIEW	2019-01-03
5	ISSUED FOR BUILDING PERMIT	2019-03-14
6	ISSUED FOR ADDENDUM ME-1	2019-08-20
7	ISSUED FOR CONSTRUCTION	2020-02-24

PROJECT:

YORK REGION PRS  
STATION #29

107 GLEN CAMERON ROAD. MARKHAM



**REGAL CONSULTING ENGINEERS INC.**  
CONSULTING MECHANICAL & ELECTRICAL ENGINEERS  
2359 Royal Windsor Drive, Suite 201, Mississauga, Ontario L5J 4S9  
PHONE: (905)855-3010  
[www.regal-eng.com](http://www.regal-eng.com)

CLIENT



THE CONTRACTOR SHALL VERIFY ALL DIMENSIONS PRIOR TO COMMENCEMENT OF THE WORK. ANY DISCREPANCIES ARE TO BE REPORTED TO THE CONSULTANT.

ARCHITECT

THOMASBROWN  
ARCHITECTS

**A:** 197 SPADINA AVE, SUITE 500, TORONTO, ON  
**T:** 416-364-5710 EXT 101  
**W:** WWW.TBROWNARCH.COM

PROFESSIONAL SEAL

Approval to Proceed

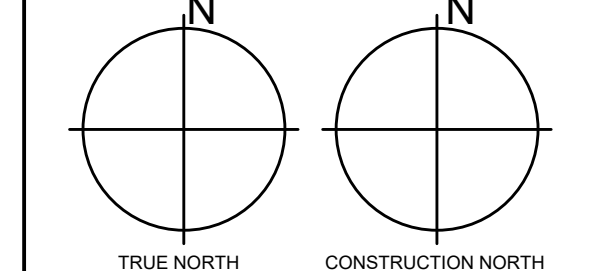
Project Phase

Authorization (signature)

DWG TITLE
-----------

## LIGHTING CONTROL DETAILS

## ORIENTATION



DATE \_\_\_\_\_

Jan. 03, 2019

SCALE

1:75

DWG STATUS	
------------	--

PERMIT

PROJECT No. \_\_\_\_\_

2016-147

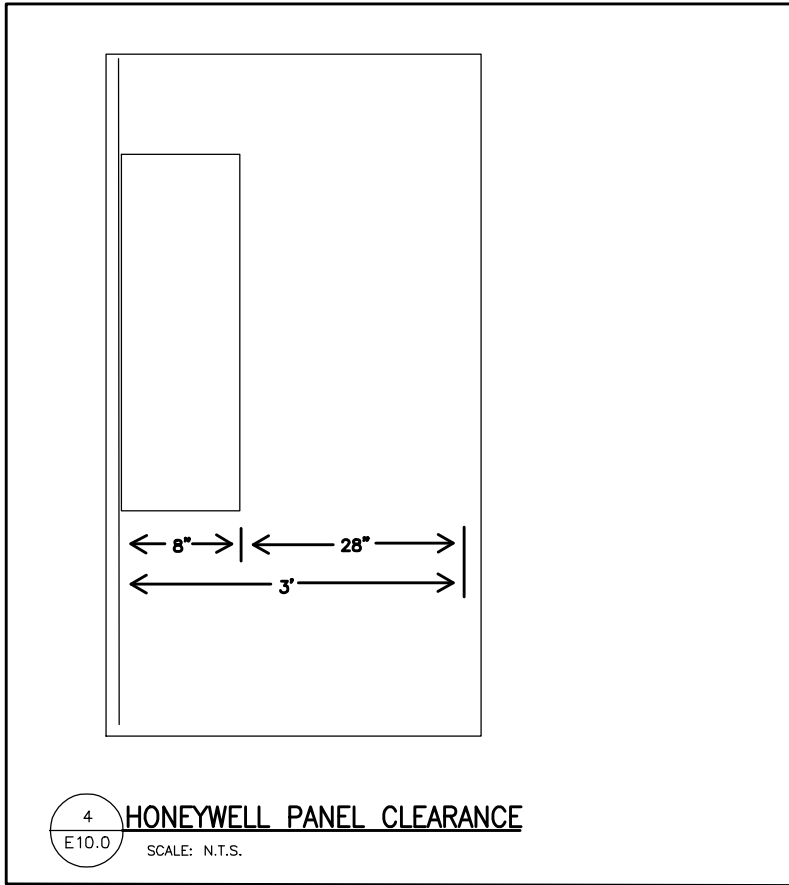
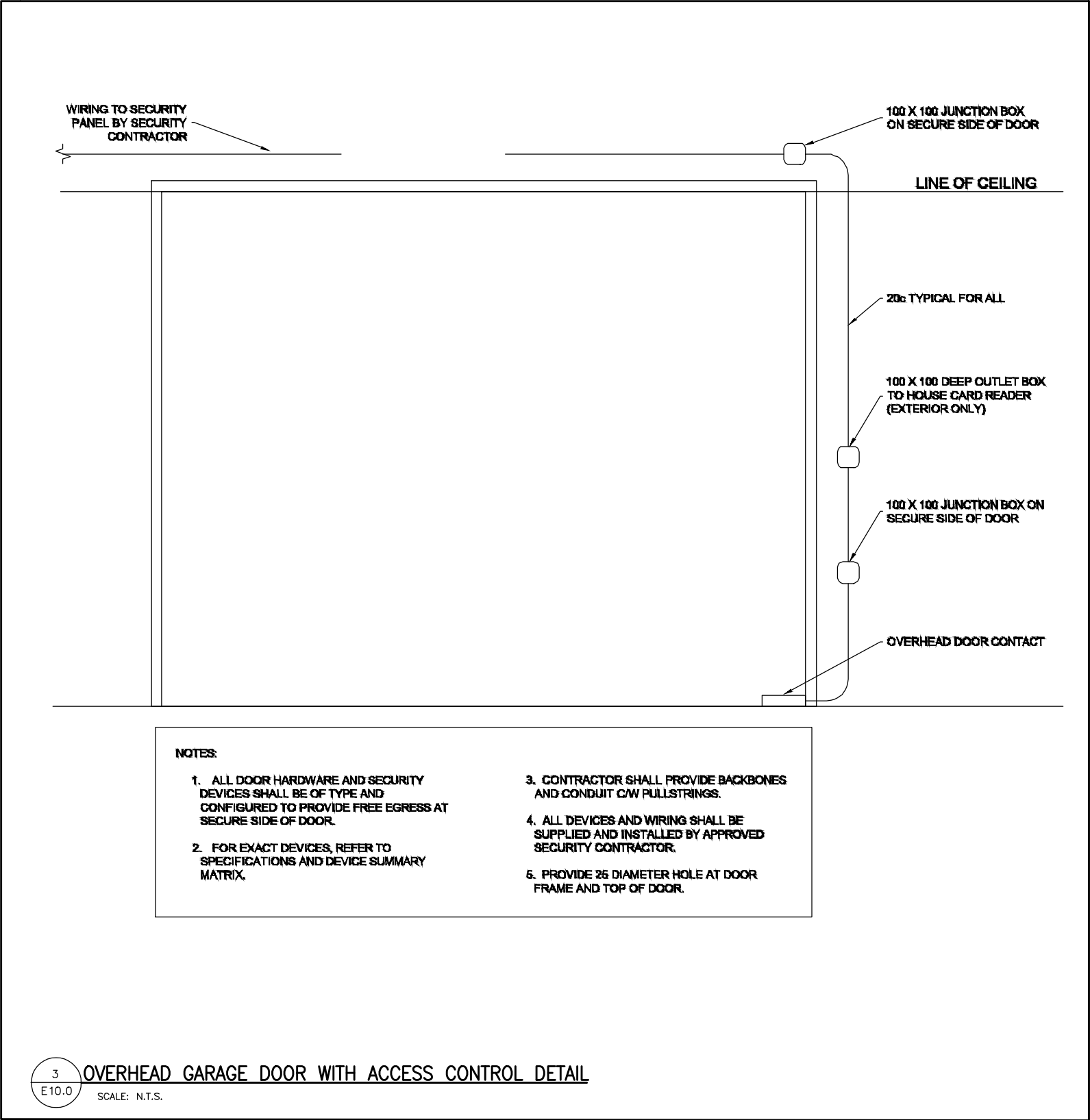
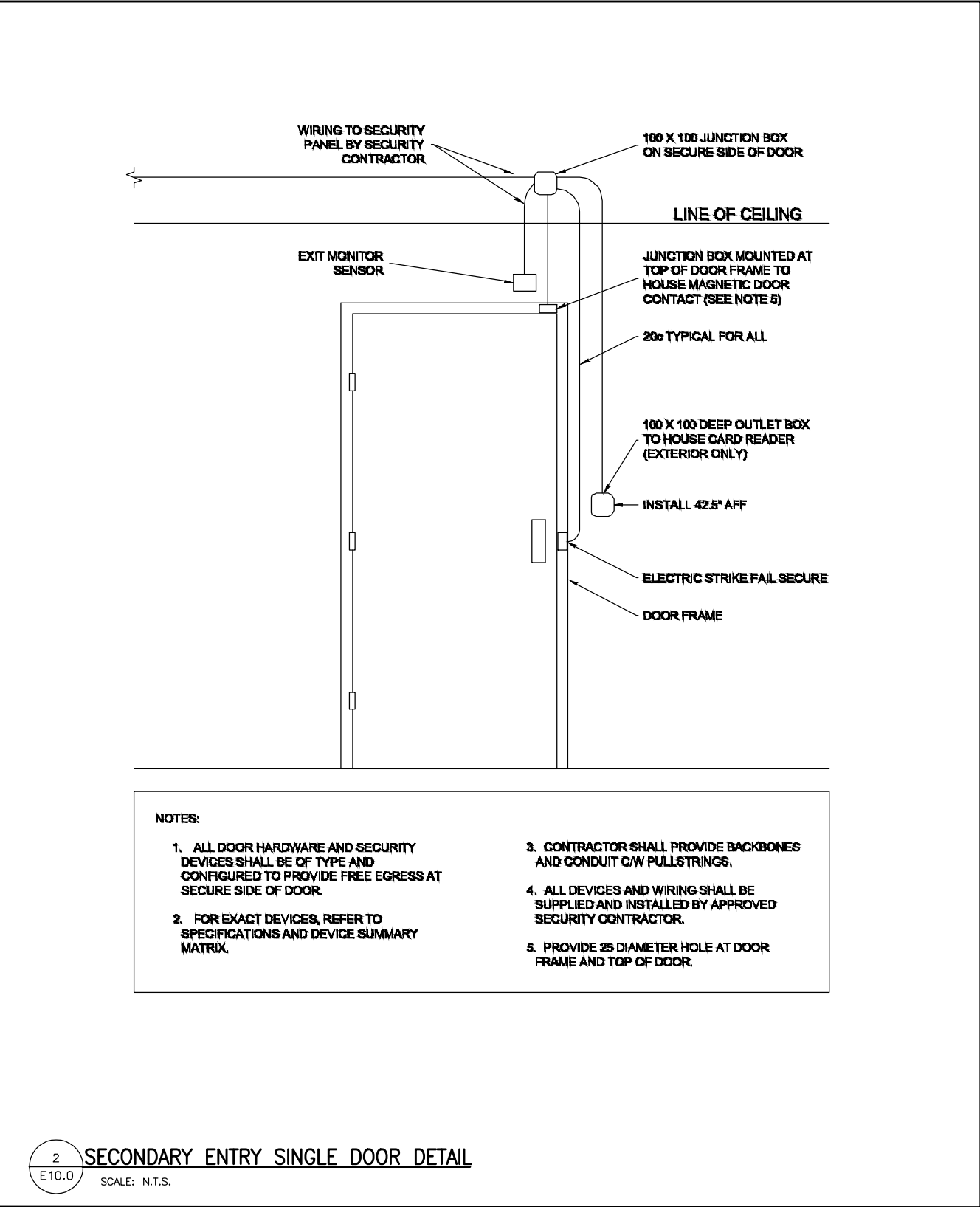
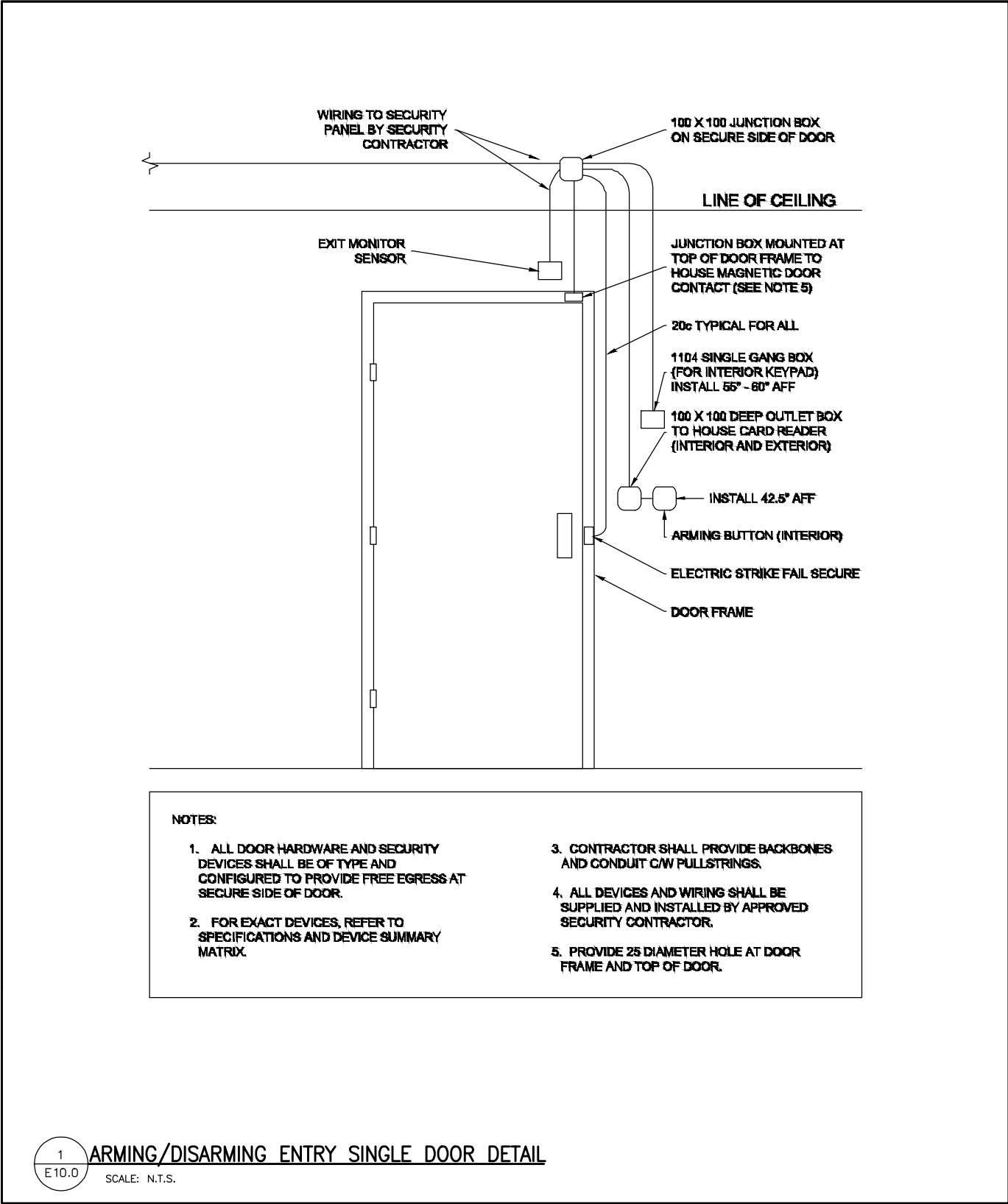
DRAWING No.

## E9.0

REVISION
----------

---





EMS MARKHAM #29 SECURITY DEVICE SUMMARY

SECURITY / ACCESS SYSTEM COMPONENTS														INTRUSION DETECTION EQUIPMENT					LOCKSMITHING & KEYS		
DOOR # ON DRAWING SUPPLIER	DOOR DESCRIPTION	SECURITY OPERATION TYPE	EXTERIOR CARD READER	INTERIOR CARD READER	ARMING BUTTON	ELECTRIC STRIKE MECHANISM	ELECTROMAGNETIC LOCK	MAGNETIC DOOR CONTACT	OVERHEAD DOOR CONTACT	REQUEST TO EXIT MOTION	PEIZZO BUZZER	DOOR / GATE RELEASE	INTERCOM OR COMMUNICATOR NEEDED	KEYPAD	CONTROL PANEL	DIRECTIONAL MOTION DETECTOR	360 DEGREE MOTION VICINITY	GLASS BREAKER DETECTOR IN VICINITY	REQUIRED LOCKSMITHING	DETAILS	COMMENTS OR QUESTIONS
FG 100A	SINGLE EXTERIOR DOOR LEADING IN TO VESTIBULE 100	T1	1	1	1	1	0	1	0	1	0	0	0	1	0	0	0	0		GMK ONLY (Lockbox to be installed on exterior)	EXTERIOR CARD READER TO BE INSTALLED NEXT TO THE DOOR OPERATOR BUTTON.
FG 100B	SINGLE INTERIOR DOOR LEADING INTO ACCESS CORRIDOR 101	N/A	0	0	0	0	0	0	0	0	0	0	0	0	0	0	0	0	PASSAGE FUNCTION	N/A	
FG 101	SINGLE EXTERIOR DOOR FROM GARAGE BAY INTO CORRIDOR 101	N/A	0	0	0	0	0	0	0	0	0	0	0	0	0	0	0	0	PASSAGE FUNCTION	N/A	
FG 104	SINGLE EXTERIOR DOOR LEADING INTO THE WRITE UP ROOM	T2	1	0	0	1	0	1	0	1	0	0	0	0	0	0	0	0	STOREROOM FUNCTION LOCKSET	GMK ONLY	GC to install all required equipment to comply with ACOA regulation. Red emergency box to be installed between the two washrooms which house key to override the lock.
M 106	Single door leading into Male Washroom	N/A	0	0	0	0	0	0	0	0	0	0	0	0	0	0	0	0	STOREROOM FUNCTION	Change key 1	GC to install all required equipment to comply with ACOA regulation. Red emergency box to be installed between the two washrooms which house key to override the lock.
M 107	Single door leading into Women's Washroom	N/A	0	0	0	0	0	0	0	0	0	0	0	0	0	0	0	0	STOREROOM FUNCTION	Change key 1	GC to install all required equipment to comply with ACOA regulation. Red emergency box to be installed between the two washrooms which house key to override the lock.
M 108	Single Door leading into Utility room	N/A	0	0	0	0	0	0	0	0	0	0	0	0	0	0	0	0	PASSAGE FUNCTION	N/A	
M 109	Single Door leading into the IT room	T2	0	1	0	1	0	1	0	1	0	0	0	0	0	0	0	0	STOREROOM FUNCTION LOCKSET	GMK ONLY	
ML1 110A	Single Exterior door leading into the Bay Area	T2	1	0	0	1	0	1	0	1	0	0	0	0	0	0	0	0	STOREROOM FUNCTION LOCKSET	GMK ONLY	
M 110B	Single Exterior door leading into the Bay Area	T2	1	0	0	1	0	1	0	1	0	0	0	0	0	0	0	0	STOREROOM FUNCTION LOCKSET	GMK ONLY	
2G 112	SINGLE INTERIOR DOOR LEADING INTO MEDICAL STORAGE	T2	0	1	0	1	0	1	0	1	0	0	0	0	0	0	0	0	STOREROOM FUNCTION LOCKSET	GMK ONLY	
M 112B	Single Interior door leading into the Bays Area	T2	0	1	0	1	0	1	0	1	0	0	0	0	0	0	0	0	PASSAGE FUNCTION	GMK ONLY	
M 112A	Single Exterior door leading into the oxygen room	N/A	0	0	0	0	0	0	0	0	0	0	0	0	0	0	0	0	STOREROOM FUNCTION UNICAN LOCK	GMK ONLY	Code to be programmed by GC as per EMS instruction.
OH0 110H	Overhead door leading into Bay 1	T5	2	0	0	0	0	0	2	2	0	0	0	0	0	0	0	0	N/A	N/A	GC to provide relay for card access integration to be wired and tested by sec. contractor
OH0 110I	Overhead door leading into Bay 2	T5	2	0	0	0	0	0	2	2	0	0	0	0	0	0	0	0	N/A	N/A	GC to provide relay for card access integration to be wired and tested by sec. contractor
OH0 110J	Overhead door leading into Bay 3	T5	2	0	0	0	0	0	2	2	0	0	0	0	0	0	0	0	N/A	N/A	GC to provide relay for card access integration to be wired and tested by sec. contractor
OH0 110G	Overhead door leading into Bay 4	T5	2	0	0	0	0	0	2	2	0	0	0	0	0	0	0	0	N/A	N/A	GC to provide relay for card access integration to be wired and tested by sec. contractor
TOTALS			12	4	1	7	0	7	8	15	0	0	0	1	0	0	0	0	N/A	N/A	

THE CONTENTS OF THIS DRAWING AND SPECIFICATIONS REMAIN THE COPYRIGHT PROPERTY OF THOMAS BROWN ARCHITECT INC. AND MUST BE RETURNED UPON COMPLETION OF THE WORK.

ISSUE OR REVISION		
NO.	ISSUED FOR	DATE
1	ISSUED FOR REVIEW	2018-05-14
2	ISSUED FOR 80% REVIEW	2018-10-02
3	ISSUED FOR 90% DESIGN DEVELOPMENT	2018-11-21
4	ISSUED FOR REVIEW	2019-01-03
5	ISSUED FOR BUILDING PERMIT	2019-03-14
6	ISSUED FOR ADDENDUM ME-1	2019-08-20
7	ISSUED FOR CONSTRUCTION	2020-02-24

PROJECT :  
**YORK REGION PRS STATION #29**  
107 GLEN CAMERON ROAD, MARKHAM



**REGAL CONSULTING ENGINEERS INC.**  
CONSULTING MECHANICAL & ELECTRICAL ENGINEERS  
2359 Royal Windsor Drive, Suite 201, Mississauga, Ontario L5J 4S9  
PHONE: (905) 655-2010  
www.regal-rcei.com



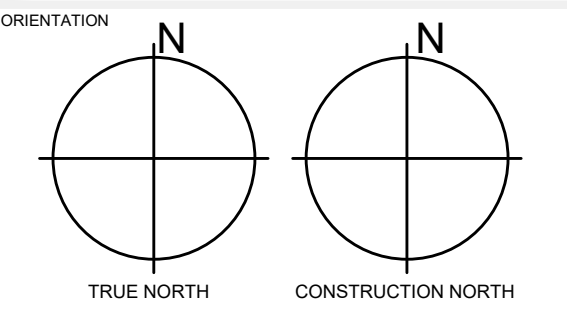
THE CONTRACTOR SHALL VERIFY ALL DIMENSIONS PRIOR TO COMMENCEMENT OF THE WORK. ANY DISCREPANCIES ARE TO BE REPORTED TO THE CONSULTANT.

ARCHITECT  
**THOMASBROWN ARCHITECTS**

A 197 SPADINA AVE, SUITE 500, TORONTO, ON  
T 416-364-5710 EXT 101  
W WWW.TBROWNARCH.COM

PROFESSIONAL SEAL  
Approval to Proceed  
Project Phase  
Authorization (signature)

DWG TITLE  
**TYPICAL SECURITY DOOR DETAILS**



DATE Jan. 03, 2019  
SCALE 1:75 DRAWN BY MJ  
DWG STATUS : PERMIT  
PROJECT No. 2016-147  
DRAWING No. E10.0 REVISION --